

# Converting Colors

Hex(D2B69F)

Have a look what the booklet for  
Hex(D2B69F) contains.

<b>Hex(D2B69F)</b> .....	3
<i><b>Conversions</b></i> .....	4
<i><b>Details</b></i> .....	6
<i><b>Harmonies</b></i> .....	11
<i><b>Previews</b></i> .....	23
<i><b>Color Blindness Simulation</b></i> .....	26
<i><b>CSS Examples</b></i> .....	29

# **Color**

**Hex(D2B69F)**

# Conversions

## Conversions Part 1

<b>Format</b>	<b>Color</b>
Hex	D2B69F
RGB	210, 182, 159
RGB Percent	82%, 71%, 62%
CMY	0.1765, 0.2863, 0.3765
CMYK	0.00, 0.13, 0.24, 0.18
HSL	27°, 36%, 72%
HSV	27°, 24%, 82%
XYZ	49.5643, 49.6607, 39.7740
YIQ	187.7500, 24.0710, -1.2170

# Conversions

## Conversions Part 2

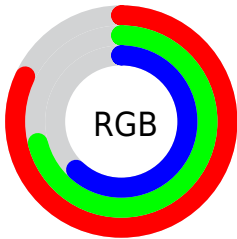
<b>Format</b>	<b>Color</b>
<b>R<sub>YB</sub></b>	210, 201, 159
Decimal	13809311
CIE <sub>Lab</sub>	75.86, 6.50, 15.41
CIE <sub>LCh</sub>	76, 16.726, 67.128
Yxy	49.6607, 0.3566, 0.3573
Android (android.graphics.Color)	4291999391 (0xFFD2B69F)
YUV	187.7500, -14.1738, 19.5132
Hunter-Lab	70.4704, 2.2222, 15.8655

# Details

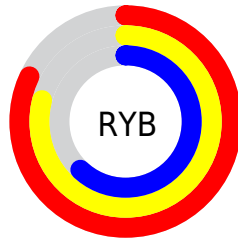
The Hex color **D2B69F** is a light color, and the websafe version is hex **CC9999**. A complement of this color would be **9FBBD2**, and the grayscale version is **BCBCBC**.

A 20% lighter version of the original color is **FFEED6**, and **9B816C** is the 20% darker color. If you saturate the color by 10%, you get **D2AA8A**, and if you desaturate by 10%, it is **D2C2B4**.

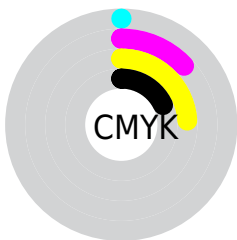
# Distribution



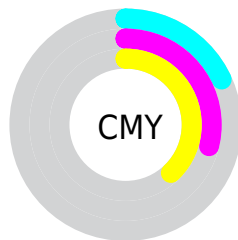
- Red (82%)
- Green (71%)
- Blue (62%)



- Red (82%)
- Yellow (79%)
- Blue (62%)



- Cyan (0%)
- Magenta (13%)
- Yellow (24%)
- Black (18%)



- Cyan (18%)
- Magenta (29%)
- Yellow (38%)

# Brightness & Saturation Gradients

These gradients show how the Hex color D2B69F changes by changing the brightness by 10 percent. The first figure shows a shift by +10% for each color and the second figure -10%.

Similar to the brightness gradients but the following saturation gradients show a change of the Hex color D2B69F by changing the saturation by 10% instead.



 D2B69F

 D2B69F

FFFFFF

 B69B85

 FFEED6

 9B816C

 FFFFF2

 806853

 67503C

 4E3926

 362412

 210F00

 000000

 D2B69F

 D2B69F

 D2AA8A

 D2C2B4

 D29F75

 D2CDC9

 D29360

 D2D9DE

 D2884B

 D2E4F3

 D27C36

 D2F0FF

 D27121

 D2FBFF

 D2650C

 D2FFFF

 D25F00

# Harmonies

## Analogous

The Analogous color harmony consists of three colors that are next to each other on the color wheel.



DBB2A9



D2B69F



C4BB9C

# Triad

The Triadic color harmony groups three colors that are evenly spaced from another and form a triangle on the color wheel.



D2B69F



95C4BE



C3B6D4

# Complementary

The Complementary color scheme is a pair of colors which are on the opposite of each other on the color wheel.



D2B69F



9FBBD2

# Split Complementary

Split-complementary colors differ from the complementary color scheme. The scheme consists of three colors, the original color and two neighbors of the complement color.



AFBBD9



D2B69F



93C3CD

# Square

The Square scheme is like the rectangle color scheme, but the four colors are evenly spaced on the color wheel.



D2B69F



A1C3AF



9DC0D7



D2B2C7

# Rectangle

The Rectangle color scheme consists of four colors that form a rectangle on the color wheel.



D2B69F



B8BE9F



9DC0D7



BCB8D6



# Sweetspot

The Sweet Spot groups the original color and five complimentary colors.



D2B69F



FFF5ED



D29FBB



807A75



000000



808080



# Same Dimension

The Same Dimension uses a secret algorithm to generate beautiful new colors.



D2B69F



FFD6B5



D2CF9F



69635E



A84C00



291200

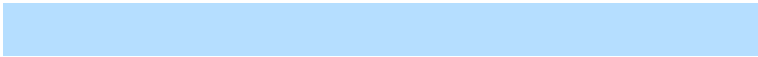


# Inverse Universe

The Inverse Universe completely reimagines the original color for something new.



9FBBD2



B5DEFF



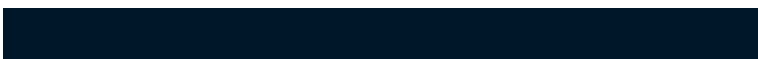
9FA2D2



5E6469



005CA8



001629



# Previews

## White Background



This preview shows how the Hex color D2B69F looks on a white background.

## Color Contrast Check

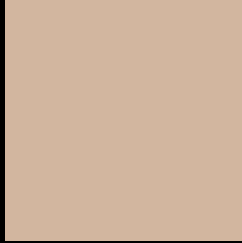
Large Text (above 18pt) WCAG AA × Fail

Any Text WCAG AA × Fail

Large Text (above 18pt) WCAG AAA × Fail

Any Text WCAG AAA × Fail

# Black Background



This preview shows how the Hex color D2B69F looks on a black background.

## Color Contrast Check

Large Text (above 18pt) WCAG AA ✓ Pass

Any Text WCAG AA ✓ Pass

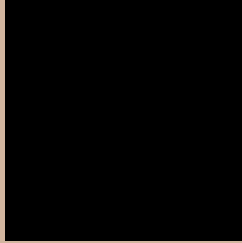
Large Text (above 18pt) WCAG AAA ✓ Pass

Any Text WCAG AAA ✓ Pass

If you want to check with other color combinations, try the [Color Contrast Checker](#).



## Hex D2B69F Background



This preview shows how black text looks on a background with the Hex color D2B69F.



This preview shows how white text looks on a background with the Hex color D2B69F.

# Color Blindness Simulation

Color vision deficiency is a very complex topic, and I could not describe the different causes any better than Wikipedia does, so if you want to learn more, you should check out their [article about color blindness](#).

## Dichromacy



**Original Color**  
D2B69F

**Protanopia**  
C4BBA1

**Deuteranopia**  
D7B49F



**Tritanopia**  
D6B1BF

# Trichromacy



# Monochromacy



# CSS Examples

## Text

The CSS property to change the color of the text to Hex D2B69F is called "color". The color property can be set on classes, ids or directly on the HTML element.

This example shows how text in the color #D2B69F looks like.

```
.text, #text, p{  
    color:#D2B69F  
}
```

If you want to add a text shadow in that color use the text-shadow property, you can generate a text shadow directly with our [CSS Text Shadow Generator](#).

Here you see how black text with a 4 pixel #D2B69F colored shadow looks like.

```
.shadow{ text-shadow: 4px 4px 2px #D2B69F
}
```

## Border

The CSS property to change the border of an element to Hex D2B69F is called "border". The border property can be set on classes, ids or directly on the HTML element.

This example shows the color as border, it can be applied via the CSS property "border" or "border-color".

```
.border, #border, table{ border:4px solid
#D2B69F }
```

If only the border color should be changed use the property `border-color`.

```
.border{ border-color:#D2B69F }
```

If you want to add a box shadow in that color use:

Here you see how a box with a 4 pixel #D2B69F colored shadow looks like.

```
.boxshadow{ -moz-box-shadow:4px 4px 4px  
4px #D2B69F; -webkit-box-shadow:4px 4px  
4px 4px #D2B69F; box-shadow:4px 4px 4px  
4px #D2B69F }
```

# Background

The CSS property to change the background color of an element to Hex D2B69F is called "background". The background property can be set on classes, ids or directly on the HTML element.

```
.background, #background, body{  
background:#D2B69F }
```

If only the background color should be changed can be used:

```
.background{ background-color:#D2B69F }
```

This example shows the color as background, it is applied via the CSS property "background".

To optimize and compress your CSS code, you can use our [online CSS compressor and optimizer](#) based on csstidy. If you want to create a linear or radial gradient as background or border, check our [CSS Gradient Generator](#).



Hey! You found this booklet interesting? Support Converting Colors with the new Membership Option!

The pro membership hides all ads, plus gives you double the colors in the color bucket, and more awesome pro features!

**[Learn more, Memberships starting at \\$2.50/m!](#)**

**Follow me  
on Twitter!**

@ConvertingColor