

Converting Colors

Hex(D2B6B3)

Have a look what the booklet for
Hex(D2B6B3) contains.

Hex(D2B6B3)	3
<i>Conversions</i>	4
<i>Details</i>	6
<i>Harmonies</i>	11
<i>Previews</i>	23
<i>Color Blindness Simulation</i>	26
<i>CSS Examples</i>	29

Color

Hex(D2B6B3)

Conversions

Conversions Part 1

Format	Color
Hex	D2B6B3
RGB	210, 182, 179
RGB Percent	82%, 71%, 70%
CMY	0.1765, 0.2863, 0.2980
CMYK	0.00, 0.13, 0.15, 0.18
HSL	6°, 26%, 76%
HSV	6°, 15%, 82%
XYZ	51.4430, 50.4122, 49.6670
YIQ	190.0300, 17.6510, 5.0030

Conversions

Conversions Part 2

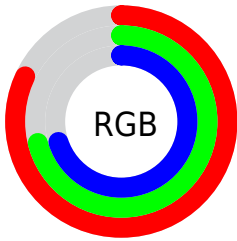
Format	Color
R _Y B	210, 182, 179
Decimal	13809331
CIE Lab	76.32, 9.54, 5.22
CIE LCh	76, 10.870, 28.689
Yxy	50.4122, 0.3395, 0.3327
Android (android.graphics.Color)	4291999411 (0xFFD2B6B3)
YUV	190.0300, -5.4378, 17.5137
Hunter-Lab	71.0016, 5.0764, 8.2265

Details

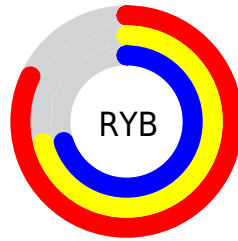
The Hex color **D2B6B3** is a light color, and the websafe version is hex **CCCCCC**. A complement of this color would be **B3CFD2**, and the grayscale version is **BEBEBE**.

A 20% lighter version of the original color is **FFEEEB**, and **9B817E** is the 20% darker color. If you saturate the color by 10%, you get **D2A39E**, and if you desaturate by 10%, it is **D2C9C8**.

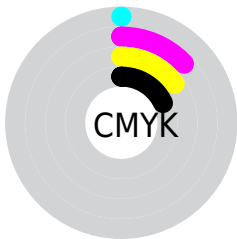
Distribution



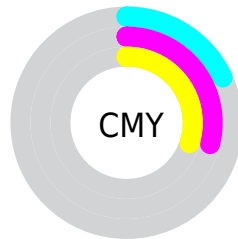
- Red (82%)
- Green (71%)
- Blue (70%)



- Red (82%)
- Yellow (71%)
- Blue (70%)



- Cyan (0%)
- Magenta (13%)
- Yellow (15%)
- Black (18%)



- Cyan (18%)
- Magenta (29%)
- Yellow (30%)

Brightness & Saturation Gradients

These gradients show how the Hex color D2B6B3 changes by changing the brightness by 10 percent. The first figure shows a shift by +10% for each color and the second figure -10%.

Similar to the brightness gradients but the following saturation gradients show a change of the Hex color D2B6B3 by changing the saturation by 10% instead.

 D2B6B3

 D2B6B3

FFFFFF

 B69B98

 FFEEDB

 9B817E

 816865

 68504D

 4F3937

 382321

 230E0B

 000000

 D2B6B3

 D2B6B3

 D2A39E

 D2C9C8

 D29089

 D2DCDD

 D27D74

 D2EFF2

 D26A5F

 D2FFFF

 D2574A

 D24435

 D23120

 D21E0B

 D21400

Harmonies

Analogous

The Analogous color harmony consists of three colors that are next to each other on the color wheel.



D0B6BD



D2B6B3



CEB8AB

Triad

The Triadic color harmony groups three colors that are evenly spaced from another and form a triangle on the color wheel.



D2B6B3



AFC1B2



B1BDD0

Complementary

The Complementary color scheme is a pair of colors which are on the opposite of each other on the color wheel.



D2B6B3



B3CFD2

Split Complementary

Split-complementary colors differ from the complementary color scheme. The scheme consists of three colors, the original color and two neighbors of the complement color.



A7C0CD



D2B6B3



A6C2BB

Square

The Square scheme is like the rectangle color scheme, but the four colors are evenly spaced on the color wheel.



D2B6B3



BABFAB



A3C2C5



BEBACE

Rectangle

The Rectangle color scheme consists of four colors that form a rectangle on the color wheel.



D2B6B3



C8BAA9



A3C2C5



ADBED0

Sweetspot

The Sweet Spot groups the original color and five complimentary colors.



D2B6B3



FFF6F5



D2B3CF



807A79



000000



808080

Same Dimension

The Same Dimension uses a secret algorithm to generate beautiful new colors.



D2B6B3



FFD6D1



D2C5B3



695F5E



A81000



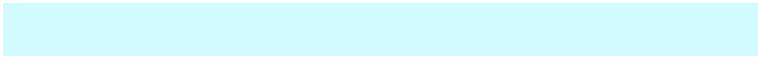
290400

Inverse Universe

The Inverse Universe completely reimagines the original color for something new.



B3CFD2



D1FBFF



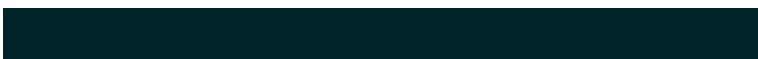
B3C0D2



5E6869



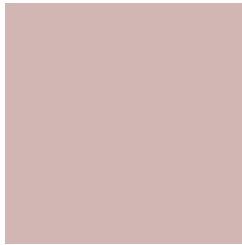
0098A8



002529

Previews

White Background



This preview shows how the Hex color D2B6B3 looks on a white background.

Color Contrast Check

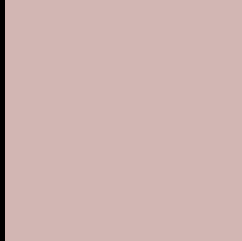
Large Text (above 18pt) WCAG AA × Fail

Any Text WCAG AA × Fail

Large Text (above 18pt) WCAG AAA × Fail

Any Text WCAG AAA × Fail

Black Background



This preview shows how the Hex color D2B6B3 looks on a black background.

Color Contrast Check

Large Text (above 18pt) WCAG AA ✓ Pass

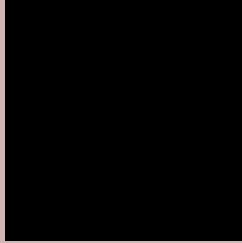
Any Text WCAG AA ✓ Pass

Large Text (above 18pt) WCAG AAA ✓ Pass

Any Text WCAG AAA ✓ Pass

If you want to check with other color combinations, try the [Color Contrast Checker](#).

Hex D2B6B3 Background



This preview shows how black text looks on a background with the Hex color D2B6B3.

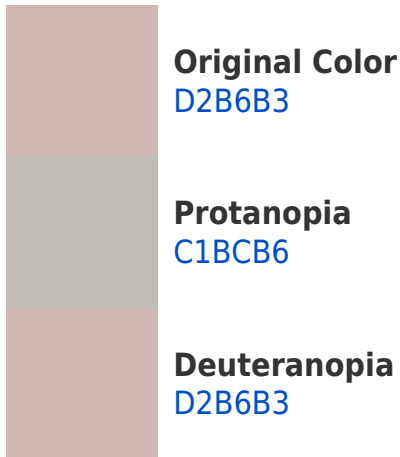


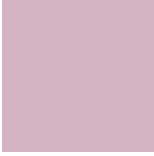
This preview shows how white text looks on a background with the Hex color D2B6B3.

Color Blindness Simulation

Color vision deficiency is a very complex topic, and I could not describe the different causes any better than Wikipedia does, so if you want to learn more, you should check out their [article about color blindness](#).

Dichromacy





Tritanopia
D4B4C2

Trichromacy



Original Color
D2B6B3

Protanomaly
C7BAB5

Deuteranomaly
D2B6B3

Tritanomaly
D3B5BD

Monochromacy



Original Color
D2B6B3

Achromatopsia
BEBEBE

Achromatomaly
C5BBBA

CSS Examples

Text

The CSS property to change the color of the text to Hex D2B6B3 is called "color". The color property can be set on classes, ids or directly on the HTML element.

This example shows how text in the color #D2B6B3 looks like.

```
.text, #text, p{  
    color:#D2B6B3  
}
```

If you want to add a text shadow in that color use the text-shadow property, you can generate a text shadow directly with our [CSS Text Shadow Generator](#).

Here you see how black text with a 4 pixel #D2B6B3 colored shadow looks like.

```
.shadow{ text-shadow: 4px 4px 2px #D2B6B3
}
```

Border

The CSS property to change the border of an element to Hex D2B6B3 is called "border". The border property can be set on classes, ids or directly on the HTML element.

This example shows the color as border, it can be applied via the CSS property "border" or "border-color".

```
.border, #border, table{ border:4px solid
#D2B6B3 }
```

If only the border color should be changed use the property `border-color`.

```
.border{ border-color:#D2B6B3 }
```

If you want to add a box shadow in that color use:

Here you see how a box with a 4 pixel #D2B6B3 colored shadow looks like.

```
.boxshadow{ -moz-box-shadow:4px 4px 4px  
4px #D2B6B3; -webkit-box-shadow:4px 4px  
4px 4px #D2B6B3; box-shadow:4px 4px 4px  
4px #D2B6B3 }
```

Background

The CSS property to change the background color of an element to Hex D2B6B3 is called "background". The background property can be set on classes, ids or directly on the HTML element.

```
.background, #background, body{  
background:#D2B6B3 }
```

If only the background color should be changed can be used:

```
.background{ background-color:#D2B6B3 }
```

This example shows the color as background, it is applied via the CSS property "background".

To optimize and compress your CSS code, you can use our [online CSS compressor and optimizer](#) based on csstidy. If you want to create a linear or radial gradient as background or border, check our [CSS Gradient Generator](#).

Hey! You found this booklet interesting? Support Converting Colors with the new Membership Option!

The pro membership hides all ads, plus gives you double the colors in the color bucket, and more awesome pro features!

[Learn more, Memberships starting at \\$2.50/m!](#)

**Follow me
on Twitter!**

@ConvertingColor