

Converting Colors

Hex(D2B6BD)

Have a look what the booklet for
Hex(D2B6BD) contains.

Hex(D2B6BD)	3
<i>Conversions</i>	4
<i>Details</i>	6
<i>Harmonies</i>	11
<i>Previews</i>	23
<i>Color Blindness Simulation</i>	26
<i>CSS Examples</i>	29

Color

Hex(D2B6BD)

Conversions

Conversions Part 1

Format	Color
Hex	D2B6BD
RGB	210, 182, 189
RGB Percent	82%, 71%, 74%
CMY	0.1765, 0.2863, 0.2588
CMYK	0.00, 0.13, 0.10, 0.18
HSL	345°, 24%, 77%
HSV	345°, 13%, 82%
XYZ	52.4916, 50.8317, 55.1890
YIQ	191.1700, 14.4410, 8.1130

Conversions

Conversions Part 2

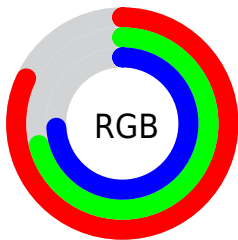
Format	Color
RYB	210, 182, 189
Decimal	13809341
CIELab	76.58, 11.18, 0.15
CIElCh	77, 11.186, 0.779
Yxy	50.8317, 0.3312, 0.3207
Android (android.graphics.Color)	4291999421 (0xFFD2B6BD)
YUV	191.1700, -1.0698, 16.5139
Hunter-Lab	71.2963, 6.6513, 4.0123

Details

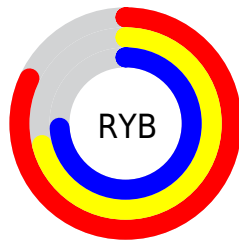
The Hex color **D2B6BD** is a light color, and the websafe version is hex **CCCCCC**. A complement of this color would be **B6D2CB**, and the grayscale version is **BFBFBF**.

A 20% lighter version of the original color is **FFEEF5**, and **9B8188** is the 20% darker color. If you saturate the color by 10%, you get **D2A1AD**, and if you desaturate by 10%, it is **D2CBCD**.

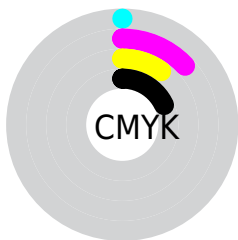
Distribution



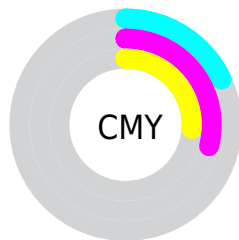
- Red (82%)
- Green (71%)
- Blue (74%)



- Red (82%)
- Yellow (71%)
- Blue (74%)



- Cyan (0%)
- Magenta (13%)
- Yellow (10%)
- Black (18%)



- Cyan (18%)
- Magenta (29%)
- Yellow (26%)

Brightness & Saturation Gradients

These gradients show how the Hex color D2B6BD changes by changing the brightness by 10 percent. The first figure shows a shift by +10% for each color and the second figure -10%.

Similar to the brightness gradients but the following saturation gradients show a change of the Hex color D2B6BD by changing the saturation by 10% instead.

 D2B6BD

 D2B6BD

FFFFFF

 B69BA2

 FFEEF5

 9B8188

 81686E

 685056

 4F393F

 382329

 220E15

 000000

 D2B6BD

 D2B6BD

 D2A1AD

 D2CBCD

 D28C9E

 D2E0DD

 D2778E

 D2F5EC

 D2627E

 D2FFFC

 D24D6E

 D2FFFF

 D2385F

 D2234F

 D20E3F

 D20035

Harmonies

Analogous

The Analogous color harmony consists of three colors that are next to each other on the color wheel.



CBB7C7



D2B6BD



D3B7B3

Triad

The Triadic color harmony groups three colors that are evenly spaced from another and form a triangle on the color wheel.



D2B6BD



BAC0AB



A8C1CF

Complementary

The Complementary color scheme is a pair of colors which are on the opposite of each other on the color wheel.



D2B6BD



B6D2CB

Split Complementary

Split-complementary colors differ from the complementary color scheme. The scheme consists of three colors, the original color and two neighbors of the complement color.



A3C3C7



D2B6BD



AEC2B3

Square

The Square scheme is like the rectangle color scheme, but the four colors are evenly spaced on the color wheel.



D2B6BD



C5BCA8



A6C3BD



B2BED1

Rectangle

The Rectangle color scheme consists of four colors that form a rectangle on the color wheel.



D2B6BD



D1B8AD



A6C3BD



A6C2CD

Sweetspot

The Sweet Spot groups the original color and five complimentary colors.



D2B6BD



FFF5F7



CBB6D2



80797B



000000



808080

Same Dimension

The Same Dimension uses a secret algorithm to generate beautiful new colors.



D2B6BD



FFD6E0



D2BDB6



695E61



A8002A



29000A

Inverse Universe

The Inverse Universe completely reimagines the original color for something new.



D2B6BD



FFD6E0



B6CBD2



695E61



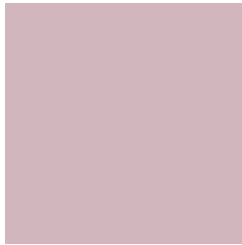
A8002A



29000A

Previews

White Background



This preview shows how the Hex color D2B6BD looks on a white background.

Color Contrast Check

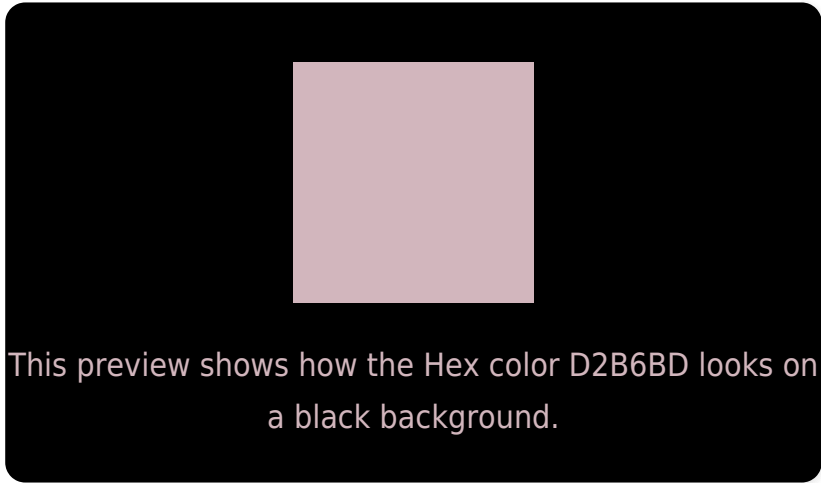
Large Text (above 18pt) WCAG AA × Fail

Any Text WCAG AA × Fail

Large Text (above 18pt) WCAG AAA × Fail

Any Text WCAG AAA × Fail

Black Background



Color Contrast Check

Large Text (above 18pt) WCAG AA ✓ Pass

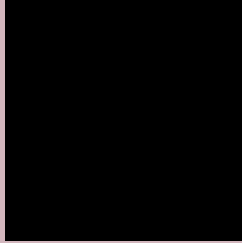
Any Text WCAG AA ✓ Pass

Large Text (above 18pt) WCAG AAA ✓ Pass

Any Text WCAG AAA ✓ Pass

If you want to check with other color combinations, try the [Color Contrast Checker](#).

Hex D2B6BD Background



This preview shows how black text looks on a background with the Hex color D2B6BD.



This preview shows how white text looks on a background with the Hex color D2B6BD.

Color Blindness Simulation

Color vision deficiency is a very complex topic, and I could not describe the different causes any better than Wikipedia does, so if you want to learn more, you should check out their [article about color blindness](#).

Dichromacy



Original Color
D2B6BD

Protanopia
BFBC1

Deuteranopia
CFB7BD



Tritanopia
D3B5C3

Trichromacy



Original Color
D2B6BD

Protanomaly
C6BAC0

Deuteranomaly
D0B7BD

Tritanomaly
D3B5C1

Monochromacy



Original Color
D2B6BD

Achromatopsia
BFBFBF

Achromatomaly
C6BCBE

CSS Examples

Text

The CSS property to change the color of the text to Hex D2B6BD is called "color". The color property can be set on classes, ids or directly on the HTML element.

This example shows how text in the color #D2B6BD looks like.

```
.text, #text, p{  
    color:#D2B6BD  
}
```

If you want to add a text shadow in that color use the text-shadow property, you can generate a text shadow directly with our [CSS Text Shadow Generator](#).

Here you see how black text with a 4 pixel #D2B6BD colored shadow looks like.

```
.shadow{ text-shadow: 4px 4px 2px #D2B6BD }  
}
```

Border

The CSS property to change the border of an element to Hex D2B6BD is called "border". The border property can be set on classes, ids or directly on the HTML element.

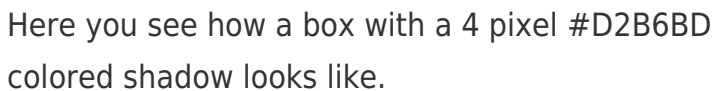
This example shows the color as border, it can be applied via the CSS property "border" or "border-color".

```
.border, #border, table{ border:4px solid #D2B6BD }  
}
```

If only the border color should be changed use the property `border-color`.

```
.border{ border-color:#D2B6BD }
```

If you want to add a box shadow in that color use:



Here you see how a box with a 4 pixel #D2B6BD colored shadow looks like.

```
.boxshadow{ -moz-box-shadow:4px 4px 4px  
4px #D2B6BD; -webkit-box-shadow:4px 4px  
4px 4px #D2B6BD; box-shadow:4px 4px 4px  
4px #D2B6BD }
```

Background

The CSS property to change the background color of an element to Hex D2B6BD is called "background". The background property can be set on classes, ids or directly on the HTML element.

```
.background, #background, body{  
background:#D2B6BD }
```

If only the background color should be changed can be used:

```
.background{ background-color:#D2B6BD }
```

This example shows the color as background, it is applied via the CSS property "background".

To optimize and compress your CSS code, you can use our [online CSS compressor and optimizer](#) based on csstidy. If you want to create a linear or radial gradient as background or border, check our [CSS Gradient Generator](#).

Hey! You found this booklet interesting? Support Converting Colors with the new Membership Option!

The pro membership hides all ads, plus gives you double the colors in the color bucket, and more awesome pro features!

[Learn more, Memberships starting at \\$2.50/m!](#)

**Follow me
on Twitter!**

@ConvertingColor