

Converting Colors

Hex(D2B897)

Have a look what the booklet for
Hex(D2B897) contains.

Hex(D2B897)	3
<i>Conversions</i>	4
<i>Details</i>	6
<i>Harmonies</i>	11
<i>Previews</i>	23
<i>Color Blindness Simulation</i>	26
<i>CSS Examples</i>	29

Color

Hex(D2B897)

Conversions

Conversions Part 1

Format	Color
Hex	D2B897
RGB	210, 184, 151
RGB Percent	82%, 72%, 59%
CMY	0.1765, 0.2784, 0.4078
CMYK	0.00, 0.12, 0.28, 0.18
HSL	34°, 40%, 71%
HSV	34°, 28%, 82%
XYZ	49.3047, 50.2170, 36.3724
YIQ	188.0120, 26.0890, -4.7510

Conversions

Conversions Part 2

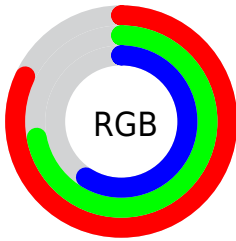
Format	Color
RYB	197, 210, 151
Decimal	13809815
CIELab	76.20, 4.32, 20.20
CIELCh	76, 20.656, 77.916
Yxy	50.2170, 0.3628, 0.3695
Android (android.graphics.Color)	4291999895 (0xFFD2B897)
YUV	188.0120, -18.2469, 19.2835
Hunter-Lab	70.8639, 0.1824, 19.1730

Details

The Hex color **D2B897** is a light color, and the websafe version is hex **CCCC99**. A complement of this color would be **97B1D2**, and the grayscale version is **BCBCBC**.

A 20% lighter version of the original color is **FFF0CD**, and **9B8364** is the 20% darker color. If you saturate the color by 10%, you get **D2AF82**, and if you desaturate by 10%, it is **D2C1AC**.

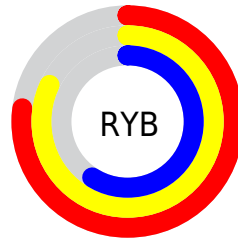
Distribution



Red (82%)

Green (72%)

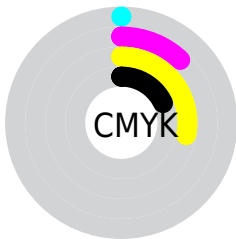
Blue (59%)



Red (77%)

Yellow (82%)

Blue (59%)

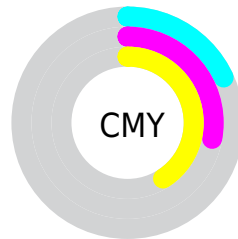


Cyan (0%)

Magenta (12%)

Yellow (28%)

Black (18%)



Cyan (18%)

Magenta (28%)

Yellow (41%)

Brightness & Saturation Gradients


These gradients show how the Hex color D2B897 changes by changing the brightness by 10 percent. The first figure shows a shift by +10% for each color and the second figure -10%.

Similar to the brightness gradients but the following saturation gradients show a change of the Hex color D2B897 by changing the saturation by 10% instead.

 D2B897

 D2B897

FFFFFF

 B69D7D

 FFF0CD

 9B8364

 FFFFEA

 806A4C

 665235

 4E3B1F

 362509

 1F1100

 000000

 D2B897

 D2B897

 D2AF82

 D2C1AC

 D2A56D

 D2CBC1

 D29C58

 D2D4D6

 D29343

 D2DDEB

 D28A2E

 D2E6FF

 D28019

 D2F0FF

 D27704

 D2F9FF

 D27500

 D2FFFF

Harmonies

Analogous

The Analogous color harmony consists of three colors that are next to each other on the color wheel.



DFB2A0



D2B897



BFBE98

Triad

The Triadic color harmony groups three colors that are evenly spaced from another and form a triangle on the color wheel.



D2B897



89C7C7



CDB3D6

Complementary

The Complementary color scheme is a pair of colors which are on the opposite of each other on the color wheel.



D2B897



97B1D2

Split Complementary

Split-complementary colors differ from the complementary color scheme. The scheme consists of three colors, the original color and two neighbors of the complement color.



B5BAE0



D2B897



8BC5D8

Square

The Square scheme is like the rectangle color scheme, but the four colors are evenly spaced on the color wheel.



D2B897



95C6B3



9CC0E1



DEAFC4

Rectangle

The Rectangle color scheme consists of four colors that form a rectangle on the color wheel.



D2B897



B0C29D



9CC0E1



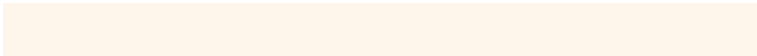
C6B5DA

Sweetspot

The Sweet Spot groups the original color and five complimentary colors.



D2B897



FFF6EB



D297B2



807A73



000000



808080

Same Dimension

The Same Dimension uses a secret algorithm to generate beautiful new colors.



D2B897



FFD9A8



CFD297



69645E



A85E00



291700

Inverse Universe

The Inverse Universe completely reimagines the original color for something new.



97B1D2



A8CFFF



9A97D2



5E6369



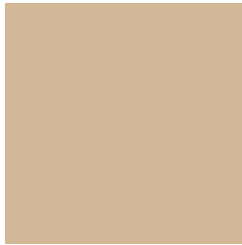
004AA8



001229

Previews

White Background



This preview shows how the Hex color D2B897 looks on a white background.

Color Contrast Check

Large Text (above 18pt) WCAG AA × Fail

Any Text WCAG AA × Fail

Large Text (above 18pt) WCAG AAA × Fail

Any Text WCAG AAA × Fail

Black Background



This preview shows how the Hex color D2B897 looks on a black background.

Color Contrast Check

Large Text (above 18pt) WCAG AA ✓ Pass

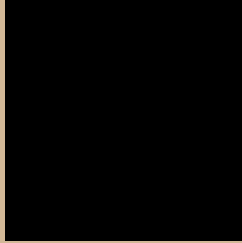
Any Text WCAG AA ✓ Pass

Large Text (above 18pt) WCAG AAA ✓ Pass

Any Text WCAG AAA ✓ Pass

If you want to check with other color combinations, try the [Color Contrast Checker](#).

Hex D2B897 Background



This preview shows how black text looks on a background with the Hex color D2B897.



This preview shows how white text looks on a background with the Hex color D2B897.

Color Blindness Simulation

Color vision deficiency is a very complex topic, and I could not describe the different causes any better than Wikipedia does, so if you want to learn more, you should check out their [article about color blindness](#).

Dichromacy



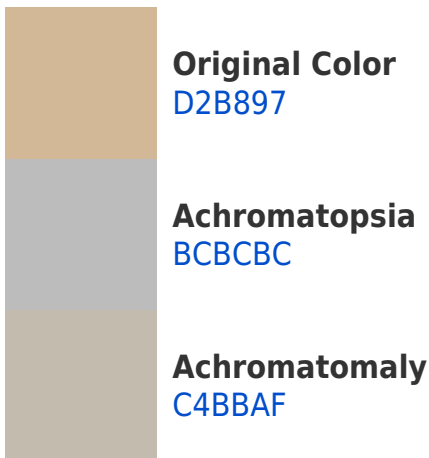


Tritanopia
D7B2C0

Trichromacy



Monochromacy



CSS Examples

Text

The CSS property to change the color of the text to Hex D2B897 is called "color". The color property can be set on classes, ids or directly on the HTML element.

This example shows how text in the color #D2B897 looks like.

```
.text, #text, p{  
    color:#D2B897  
}
```

If you want to add a text shadow in that color use the text-shadow property, you can generate a text shadow directly with our [CSS Text Shadow Generator](#).

Here you see how black text with a 4 pixel #D2B897 colored shadow looks like.

```
.shadow{ text-shadow: 4px 4px 2px #D2B897
}
```

Border

The CSS property to change the border of an element to Hex D2B897 is called "border". The border property can be set on classes, ids or directly on the HTML element.

This example shows the color as border, it can be applied via the CSS property "border" or "border-color".

```
.border, #border, table{ border:4px solid
#D2B897 }
```

If only the border color should be changed use the property `border-color`.

```
.border{ border-color:#D2B897 }
```

If you want to add a box shadow in that color use:

Here you see how a box with a 4 pixel #D2B897 colored shadow looks like.

```
.boxshadow{ -moz-box-shadow:4px 4px 4px  
4px #D2B897; -webkit-box-shadow:4px 4px  
4px 4px #D2B897; box-shadow:4px 4px 4px  
4px #D2B897 }
```

Background

The CSS property to change the background color of an element to Hex D2B897 is called "background". The background property can be set on classes, ids or directly on the HTML element.

```
.background, #background, body{  
background:#D2B897 }
```

If only the background color should be changed can be used:

```
.background{ background-color:#D2B897 }
```

This example shows the color as background, it is applied via the CSS property "background".

To optimize and compress your CSS code, you can use our [online CSS compressor and optimizer](#) based on csstidy. If you want to create a linear or radial gradient as background or border, check our [CSS Gradient Generator](#).

Hey! You found this booklet interesting? Support Converting Colors with the new Membership Option!

The pro membership hides all ads, plus gives you double the colors in the color bucket, and more awesome pro features!

[Learn more, Memberships starting at \\$2.50/m!](#)

**Follow me
on Twitter!**

@ConvertingColor