

Converting Colors

Hex(D2B8B6)

Have a look what the booklet for
Hex(D2B8B6) contains.

Hex(D2B8B6)	3
<i>Conversions</i>	4
<i>Details</i>	6
<i>Harmonies</i>	11
<i>Previews</i>	23
<i>Color Blindness Simulation</i>	26
<i>CSS Examples</i>	29

Color

Hex(D2B8B6)

Conversions

Conversions Part 1

Format	Color
Hex	D2B8B6
RGB	210, 184, 182
RGB Percent	82%, 72%, 71%
CMY	0.1765, 0.2784, 0.2863
CMYK	0.00, 0.12, 0.13, 0.18
HSL	4°, 24%, 77%
HSV	4°, 13%, 82%
XYZ	52.1623, 51.3600, 51.4202
YIQ	191.5460, 16.1380, 4.8900

Conversions

Conversions Part 2

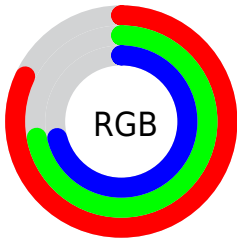
Format	Color
R _Y B	210, 184, 182
Decimal	13809846
CIE Lab	76.90, 8.95, 4.42
CIE LCh	77, 9.979, 26.283
Yxy	51.3600, 0.3367, 0.3315
Android (android.graphics.Color)	4291999926 (0xFFD2B8B6)
YUV	191.5460, -4.7062, 16.1842
Hunter-Lab	71.6659, 4.5066, 7.6256

Details

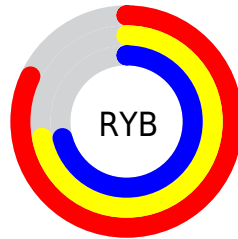
The Hex color **D2B8B6** is a light color, and the websafe version is hex **CCCCCC**. A complement of this color would be **B6D0D2**, and the grayscale version is **C0C0C0**.

A 20% lighter version of the original color is **FFF0EE**, and **9B8381** is the 20% darker color. If you saturate the color by 10%, you get **D2A4A1**, and if you desaturate by 10%, it is **D2CBCB**.

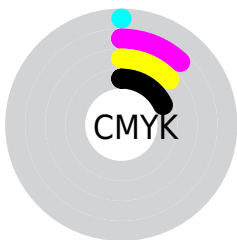
Distribution



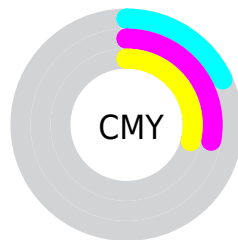
- Red (82%)
- Green (72%)
- Blue (71%)



- Red (82%)
- Yellow (72%)
- Blue (71%)



- Cyan (0%)
- Magenta (12%)
- Yellow (13%)
- Black (18%)



- Cyan (18%)
- Magenta (28%)
- Yellow (29%)

Brightness & Saturation Gradients

These gradients show how the Hex color D2B8B6 changes by changing the brightness by 10 percent. The first figure shows a shift by +10% for each color and the second figure -10%.

Similar to the brightness gradients but the following saturation gradients show a change of the Hex color D2B8B6 by changing the saturation by 10% instead.

 D2B8B6


 D2B8B6

FFFFFF

 B69D9B

 FFF0EE

 9B8381

 816A68

 685250

 4F3B39

 382524

 22100E

 000000

 D2B8B6

 D2B8B6

 D2A4A1

 D2CBCB

 D2918C

 D2DFE0

 D27D77

 D2F3F5

 D26A62

 D2FFFF

 D2564D

 D24338

 D22F23

 D21C0E

 D20F00

Harmonies

Analogous

The Analogous color harmony consists of three colors that are next to each other on the color wheel.



D0B8BF



D2B8B6



CFBAAF

Triad

The Triadic color harmony groups three colors that are evenly spaced from another and form a triangle on the color wheel.



D2B8B6



B2C2B3



B3BFD0

Complementary

The Complementary color scheme is a pair of colors which are on the opposite of each other on the color wheel.



D2B8B6



B6D0D2

Split Complementary

Split-complementary colors differ from the complementary color scheme. The scheme consists of three colors, the original color and two neighbors of the complement color.



AAC2CD



D2B8B6



AAC3BC

Square

The Square scheme is like the rectangle color scheme, but the four colors are evenly spaced on the color wheel.



D2B8B6



BDC0AD



A7C3C6



BEBCCCE

Rectangle

The Rectangle color scheme consists of four colors that form a rectangle on the color wheel.



D2B8B6



CABCAC



A7C3C6



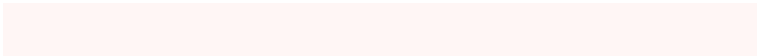
B0C0CF

Sweetspot

The Sweet Spot groups the original color and five complimentary colors.



D2B8B6



FFF6F5



D2B6D0



807A79



000000



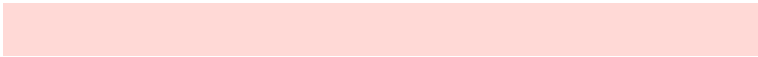
808080

Same Dimension

The Same Dimension uses a secret algorithm to generate beautiful new colors.



D2B8B6



FFD9D6



D2C6B6



695F5E



A80C00



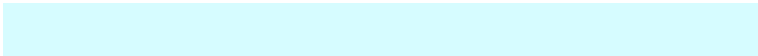
290300

Inverse Universe

The Inverse Universe completely reimagines the original color for something new.



B6D0D2



D6FCFF



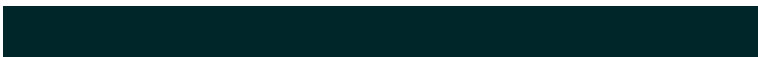
B6C2D2



5E6869



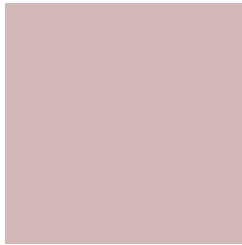
009CA8



002629

Previews

White Background



This preview shows how the Hex color D2B8B6 looks on a white background.

Color Contrast Check

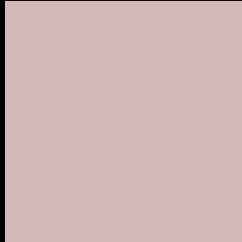
Large Text (above 18pt) WCAG AA × Fail

Any Text WCAG AA × Fail

Large Text (above 18pt) WCAG AAA × Fail

Any Text WCAG AAA × Fail

Black Background



This preview shows how the Hex color D2B8B6 looks on a black background.

Color Contrast Check

Large Text (above 18pt) WCAG AA ✓ Pass

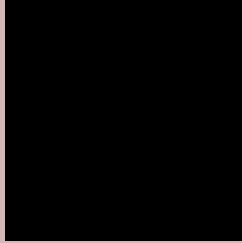
Any Text WCAG AA ✓ Pass

Large Text (above 18pt) WCAG AAA ✓ Pass

Any Text WCAG AAA ✓ Pass

If you want to check with other color combinations, try the [Color Contrast Checker](#).

Hex D2B8B6 Background



This preview shows how black text looks on a background with the Hex color D2B8B6.



This preview shows how white text looks on a background with the Hex color D2B8B6.

Color Blindness Simulation

Color vision deficiency is a very complex topic, and I could not describe the different causes any better than Wikipedia does, so if you want to learn more, you should check out their [article about color blindness](#).

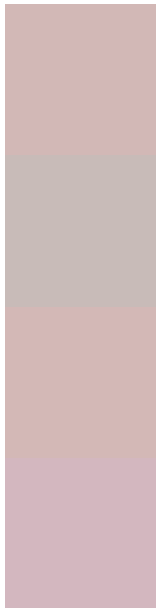
Dichromacy





Tritanopia
D4B6C4

Trichromacy



Original Color
D2B8B6

Protanomaly
C8BBB8

Deuteranomaly
D3B8B6

Tritanomaly
D3B7BF

Monochromacy



Original Color
D2B8B6

Achromatopsia
C0C0C0

Achromatomaly
C7BDBC

CSS Examples

Text

The CSS property to change the color of the text to Hex D2B8B6 is called "color". The color property can be set on classes, ids or directly on the HTML element.

This example shows how text in the color #D2B8B6 looks like.

```
.text, #text, p{  
    color:#D2B8B6  
}
```

If you want to add a text shadow in that color use the text-shadow property, you can generate a text shadow directly with our [CSS Text Shadow Generator](#).

Here you see how black text with a 4 pixel #D2B8B6 colored shadow looks like.

```
.shadow{ text-shadow: 4px 4px 2px #D2B8B6
}
```

Border

The CSS property to change the border of an element to Hex D2B8B6 is called "border". The border property can be set on classes, ids or directly on the HTML element.

This example shows the color as border, it can be applied via the CSS property "border" or "border-color".

```
.border, #border, table{ border:4px solid
#D2B8B6 }
```

If only the border color should be changed use the property `border-color`.

```
.border{ border-color:#D2B8B6 }
```

If you want to add a box shadow in that color use:

Here you see how a box with a 4 pixel #D2B8B6 colored shadow looks like.

```
.boxshadow{ -moz-box-shadow:4px 4px 4px  
4px #D2B8B6; -webkit-box-shadow:4px 4px  
4px 4px #D2B8B6; box-shadow:4px 4px 4px  
4px #D2B8B6 }
```

Background

The CSS property to change the background color of an element to Hex D2B8B6 is called "background". The background property can be set on classes, ids or directly on the HTML element.

```
.background, #background, body{  
background:#D2B8B6 }
```

If only the background color should be changed can be used:

```
.background{ background-color:#D2B8B6 }
```

This example shows the color as background, it is applied via the CSS property "background".

To optimize and compress your CSS code, you can use our [online CSS compressor and optimizer](#) based on csstidy. If you want to create a linear or radial gradient as background or border, check our [CSS Gradient Generator](#).

Hey! You found this booklet interesting? Support Converting Colors with the new Membership Option!

The pro membership hides all ads, plus gives you double the colors in the color bucket, and more awesome pro features!

[Learn more, Memberships starting at \\$2.50/m!](#)

**Follow me
on Twitter!**

@ConvertingColor