

# Converting Colors

Hex(D2BBB2)

Have a look what the booklet for  
Hex(D2BBB2) contains.

<b>Hex(D2BBB2)</b> .....	3
<i><b>Conversions</b></i> .....	4
<i><b>Details</b></i> .....	6
<i><b>Harmonies</b></i> .....	11
<i><b>Previews</b></i> .....	23
<i><b>Color Blindness Simulation</b></i> .....	26
<i><b>CSS Examples</b></i> .....	29

# **Color**

**Hex(D2BBB2)**

# Conversions

## Conversions Part 1

Format	Color
Hex	D2BBB2
RGB	210, 187, 178
RGB Percent	82%, 73%, 70%
CMY	0.1765, 0.2667, 0.3020
CMYK	0.00, 0.11, 0.15, 0.18
HSL	17°, 26%, 76%
HSV	17°, 15%, 82%
XYZ	52.3845, 52.4566, 49.4837
YIQ	192.8510, 16.5970, 2.0770

# Conversions

## Conversions Part 2

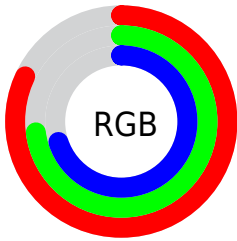
<b>Format</b>	<b>Color</b>
R <sub>Y</sub> B	210, 191, 178
Decimal	13810610
CIE Lab	77.55, 6.70, 7.53
CIE LCh	78, 10.079, 48.350
Yxy	52.4566, 0.3394, 0.3399
Android (android.graphics.Color)	4292000690 (0xFFD2BBB2)
YUV	192.8510, -7.3215, 15.0397
Hunter-Lab	72.4270, 2.3573, 10.1907

# Details

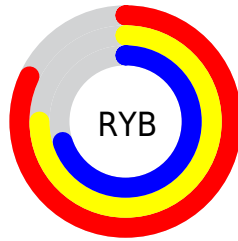
The Hex color **D2BBB2** is a light color, and the websafe version is hex **CCCCCC**. A complement of this color would be **B2C9D2**, and the grayscale version is **C1C1C1**.

A 20% lighter version of the original color is **FFF3EA**, and **9B867D** is the 20% darker color. If you saturate the color by 10%, you get **D2AC9D**, and if you desaturate by 10%, it is **D2CAC7**.

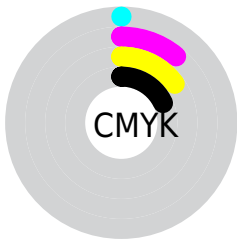
# Distribution



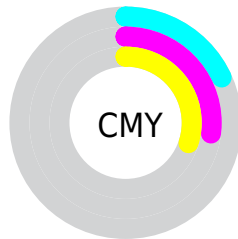
- Red (82%)
- Green (73%)
- Blue (70%)



- Red (82%)
- Yellow (75%)
- Blue (70%)



- Cyan (0%)
- Magenta (11%)
- Yellow (15%)
- Black (18%)



- Cyan (18%)
- Magenta (27%)
- Yellow (30%)

# Brightness & Saturation Gradients

These gradients show how the Hex color D2BBB2 changes by changing the brightness by 10 percent. The first figure shows a shift by +10% for each color and the second figure -10%.

Similar to the brightness gradients but the following saturation gradients show a change of the Hex color D2BBB2 by changing the saturation by 10% instead.



 D2BBB2


 D2BBB2

FFFFFF

 B6A097

 FFF3EA

 9B867D

 816D64

 68544D

 4F3D36

 382721

 23130A

 000000

 D2BBB2

 D2BBB2

 D2AC9D

 D2CAC7

 D29D88

 D2D9DC

 D28E73

 D2E8F1

 D27F5E

 D2F7FF

 D27049

 D2FFFF

 D26034

 D2511F

 D2420A

 D23B00

# Harmonies

## Analogous

The Analogous color harmony consists of three colors that are next to each other on the color wheel.



D4B9BA



D2BBB2



CBBEAE

# Triad

The Triadic color harmony groups three colors that are evenly spaced from another and form a triangle on the color wheel.



D2BBB2



ADC5BC



BDBED1

# Complementary

The Complementary color scheme is a pair of colors which are on the opposite of each other on the color wheel.



D2BBB2



B2C9D2

# Split Complementary

Split-complementary colors differ from the complementary color scheme. The scheme consists of three colors, the original color and two neighbors of the complement color.



B2C2D2



D2BBB2



A9C5C5

# Square

The Square scheme is like the rectangle color scheme, but the four colors are evenly spaced on the color wheel.



D2BBB2



B6C3B3



AAC4CD



C8BCCC

# Rectangle

The Rectangle color scheme consists of four colors that form a rectangle on the color wheel.



D2BBB2



C5C0AD



AAC4CD



B9BFD2



# Sweetspot

The Sweet Spot groups the original color and five complimentary colors.



D2BBB2



FFF6F2



D2B2C9



807A78



000000



808080

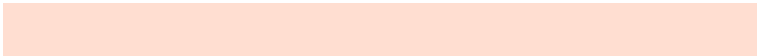


# Same Dimension

The Same Dimension uses a secret algorithm to generate beautiful new colors.



D2BBB2



FFDED1



D2CBB2



69615E



A82F00



290B00

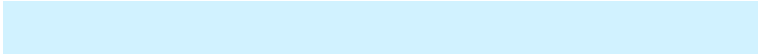


# Inverse Universe

The Inverse Universe completely reimagines the original color for something new.



B2C9D2



D1F2FF



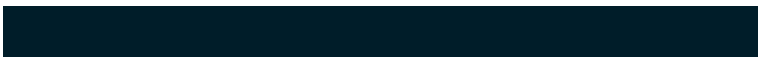
B2B9D2



5E6669



0079A8

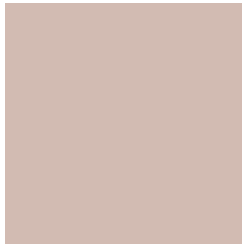


001D29



# Previews

## White Background



This preview shows how the Hex color D2BBB2 looks on a white background.

## Color Contrast Check

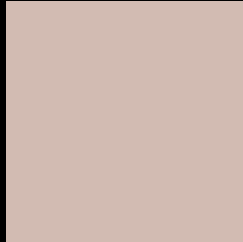
Large Text (above 18pt) WCAG AA × Fail

Any Text WCAG AA × Fail

Large Text (above 18pt) WCAG AAA × Fail

Any Text WCAG AAA × Fail

# Black Background



This preview shows how the Hex color D2BBB2 looks on a black background.

## Color Contrast Check

Large Text (above 18pt) WCAG AA ✓ Pass

Any Text WCAG AA ✓ Pass

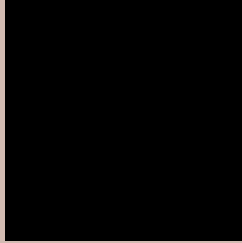
Large Text (above 18pt) WCAG AAA ✓ Pass

Any Text WCAG AAA ✓ Pass

If you want to check with other color combinations, try the [Color Contrast Checker](#).



## Hex D2BBB2 Background



This preview shows how black text looks on a background with the Hex color D2BBB2.

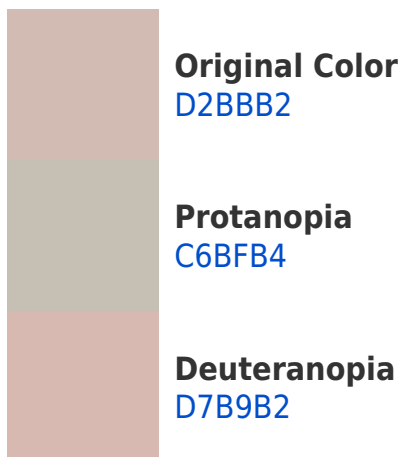


This preview shows how white text looks on a background with the Hex color D2BBB2.

# Color Blindness Simulation

Color vision deficiency is a very complex topic, and I could not describe the different causes any better than Wikipedia does, so if you want to learn more, you should check out their [article about color blindness](#).

## Dichromacy





**Tritanopia**  
D5B8C6

# Trichromacy



**Original Color**  
D2BBB2

**Protanomaly**  
CABEB3

**Deuteranomaly**  
D5BAB2

**Tritanomaly**  
D4B9BF

# Monochromacy



**Original Color**  
D2BBB2

**Achromatopsia**  
C1C1C1

**Achromatomaly**  
C7BFBC

# CSS Examples

## Text

The CSS property to change the color of the text to Hex D2BBB2 is called "color". The color property can be set on classes, ids or directly on the HTML element.

This example shows how text in the color #D2BBB2 looks like.

```
.text, #text, p{  
    color:#D2BBB2  
}
```

If you want to add a text shadow in that color use the text-shadow property, you can generate a text shadow directly with our [CSS Text Shadow Generator](#).

Here you see how black text with a 4 pixel #D2BBB2 colored shadow looks like.

```
.shadow{ text-shadow: 4px 4px 2px #D2BBB2
}
```

## Border

The CSS property to change the border of an element to Hex D2BBB2 is called "border". The border property can be set on classes, ids or directly on the HTML element.

This example shows the color as border, it can be applied via the CSS property "border" or "border-color".

```
.border, #border, table{ border:4px solid
#D2BBB2 }
```

If only the border color should be changed use the property `border-color`.

```
.border{ border-color:#D2BBB2 }
```

If you want to add a box shadow in that color use:

Here you see how a box with a 4 pixel #D2BBB2 colored shadow looks like.

```
.boxshadow{ -moz-box-shadow:4px 4px 4px  
4px #D2BBB2; -webkit-box-shadow:4px 4px  
4px 4px #D2BBB2; box-shadow:4px 4px 4px  
4px #D2BBB2 }
```

# Background

The CSS property to change the background color of an element to Hex D2BBB2 is called "background". The background property can be set on classes, ids or directly on the HTML element.

```
.background, #background, body{  
background:#D2BBB2 }
```

If only the background color should be changed can be used:

```
.background{ background-color:#D2BBB2 }
```

This example shows the color as background, it is applied via the CSS property "background".

To optimize and compress your CSS code, you can use our [online CSS compressor and optimizer](#) based on csstidy. If you want to create a linear or radial gradient as background or border, check our [CSS Gradient Generator](#).



Hey! You found this booklet interesting? Support Converting Colors with the new Membership Option!

The pro membership hides all ads, plus gives you double the colors in the color bucket, and more awesome pro features!

**[Learn more, Memberships starting at \\$2.50/m!](#)**

**Follow me  
on Twitter!**

@ConvertingColor