

Converting Colors

Hex(D2BCAE)

Have a look what the booklet for
Hex(D2BCAE) contains.

Hex(D2BCAE)	3
<i>Conversions</i>	4
<i>Details</i>	6
<i>Harmonies</i>	11
<i>Previews</i>	23
<i>Color Blindness Simulation</i>	26
<i>CSS Examples</i>	29

Color

Hex(D2BCAE)

Conversions

Conversions Part 1

Format	Color
Hex	D2BCAE
RGB	210, 188, 174
RGB Percent	82%, 74%, 68%
CMY	0.1765, 0.2627, 0.3176
CMYK	0.00, 0.10, 0.17, 0.18
HSL	23°, 29%, 75%
HSV	23°, 17%, 82%
XYZ	52.2015, 52.7241, 47.4698
YIQ	192.9820, 17.6060, 0.3100

Conversions

Conversions Part 2

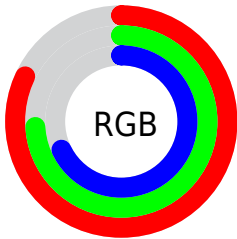
Format	Color
R _Y B	210, 197, 174
Decimal	13810862
CIE Lab	77.71, 5.54, 9.92
CIE LCh	78, 11.360, 60.834
Yxy	52.7241, 0.3425, 0.3460
Android (android.graphics.Color)	4292000942 (0xFFD2BCAE)
YUV	192.9820, -9.3581, 14.9248
Hunter-Lab	72.6113, 1.2569, 12.0670

Details

The Hex color **D2BCAE** is a light color, and the websafe version is hex **CCCCCC**. A complement of this color would be **AEC4D2**, and the grayscale version is **C1C1C1**.

A 20% lighter version of the original color is **FFF4E5**, and **9B877A** is the 20% darker color. If you saturate the color by 10%, you get **D2AF99**, and if you desaturate by 10%, it is **D2C9C3**.

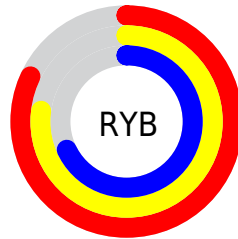
Distribution



Red (82%)

Green (74%)

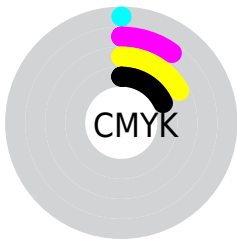
Blue (68%)



Red (82%)

Yellow (77%)

Blue (68%)

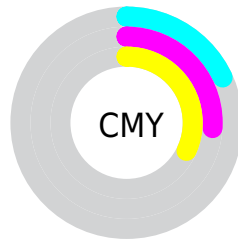


Cyan (0%)

Magenta (10%)

Yellow (17%)

Black (18%)



Cyan (18%)

Magenta (26%)

Yellow (32%)

Brightness & Saturation Gradients

These gradients show how the Hex color D2BCAE changes by changing the brightness by 10 percent. The first figure shows a shift by +10% for each color and the second figure -10%.

Similar to the brightness gradients but the following saturation gradients show a change of the Hex color D2BCAE by changing the saturation by 10% instead.

 D2BCAE

 D2BCAE

FFFFFF

 B6A193

 FFF4E5

 9B877A

 816E61

 685549

 4F3E33

 38281D

 231404

 000000

 D2BCAE

 D2BCAE

 D2AF99

 D2C9C3

 D2A284

 D2D6D8

 D2966F

 D2E3ED

 D2895A

 D2EFFF

 D27C45

 D2FCFF

 D26F30

 D2FFFF

 D2621B

 D25506

 D25200

Harmonies

Analogous

The Analogous color harmony consists of three colors that are next to each other on the color wheel.



D7BAB6



D2BCAE



C9BFAB

Triad

The Triadic color harmony groups three colors that are evenly spaced from another and form a triangle on the color wheel.



D2BCAE



A8C6C0



C3BDD2

Complementary

The Complementary color scheme is a pair of colors which are on the opposite of each other on the color wheel.



D2BCAE



AEC4D2

Split Complementary

Split-complementary colors differ from the complementary color scheme. The scheme consists of three colors, the original color and two neighbors of the complement color.



B5C1D5



D2BCAE



A6C6CA

Square

The Square scheme is like the rectangle color scheme, but the four colors are evenly spaced on the color wheel.



D2BCAE



B1C5B5



ABC4D2



CEBACA

Rectangle

The Rectangle color scheme consists of four colors that form a rectangle on the color wheel.



D2BCAE



C1C2AC



ABC4D2



BEBED4

Sweetspot

The Sweet Spot groups the original color and five complimentary colors.



D2BCAE



FFF7F2



D2AEC4



807B78



000000



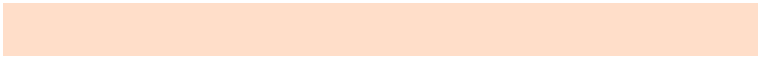
808080

Same Dimension

The Same Dimension uses a secret algorithm to generate beautiful new colors.



D2BCAE



FFDEC9



D2CEAE



69625E



A84100



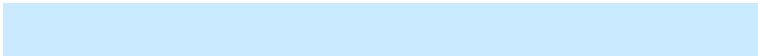
291000

Inverse Universe

The Inverse Universe completely reimagines the original color for something new.



AEC4D2



C9EAFF



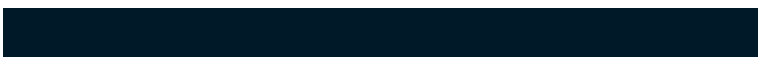
AEB2D2



5E6469



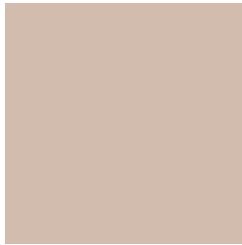
0067A8



001929

Previews

White Background



This preview shows how the Hex color D2BCAE looks on a white background.

Color Contrast Check

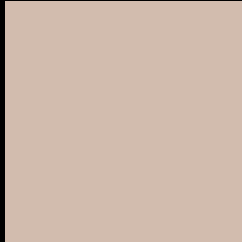
Large Text (above 18pt) WCAG AA × Fail

Any Text WCAG AA × Fail

Large Text (above 18pt) WCAG AAA × Fail

Any Text WCAG AAA × Fail

Black Background



This preview shows how the Hex color D2BCAE looks on a black background.

Color Contrast Check

Large Text (above 18pt) WCAG AA ✓ Pass

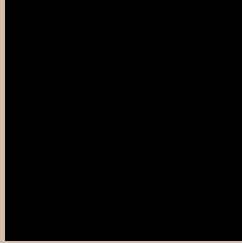
Any Text WCAG AA ✓ Pass

Large Text (above 18pt) WCAG AAA ✓ Pass

Any Text WCAG AAA ✓ Pass

If you want to check with other color combinations, try the [Color Contrast Checker](#).

Hex D2BCAE Background



This preview shows how black text looks on a background with the Hex color D2BCAE.

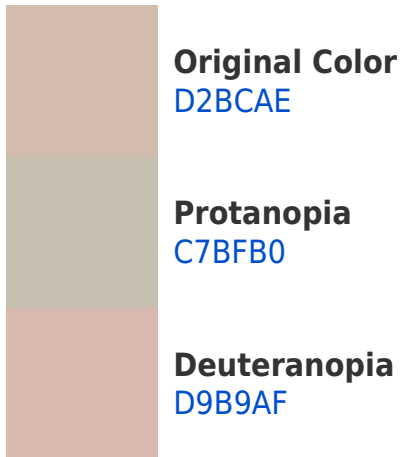


This preview shows how white text looks on a background with the Hex color D2BCAE.

Color Blindness Simulation

Color vision deficiency is a very complex topic, and I could not describe the different causes any better than Wikipedia does, so if you want to learn more, you should check out their [article about color blindness](#).

Dichromacy





Tritanopia
D5B8C7

Trichromacy



Original Color
D2BCAE

Protanomaly
CBBEAF

Deuteranomaly
D6BAAF

Tritanomaly
D4B9BE

Monochromacy



Original Color
D2BCAE

Achromatopsia
C1C1C1

Achromatomaly
C7BFBA

CSS Examples

Text

The CSS property to change the color of the text to Hex D2BCAE is called "color". The color property can be set on classes, ids or directly on the HTML element.

This example shows how text in the color #D2BCAE looks like.

```
.text, #text, p{  
    color:#D2BCAE  
}
```

If you want to add a text shadow in that color use the text-shadow property, you can generate a text shadow directly with our [CSS Text Shadow Generator](#).

Here you see how black text with a 4 pixel #D2BCAE colored shadow looks like.

```
.shadow{ text-shadow: 4px 4px 2px #D2BCAE
}
```

Border

The CSS property to change the border of an element to Hex D2BCAE is called "border". The border property can be set on classes, ids or directly on the HTML element.

This example shows the color as border, it can be applied via the CSS property "border" or "border-color".

```
.border, #border, table{ border:4px solid
#D2BCAE }
```

If only the border color should be changed use the property `border-color`.

```
.border{ border-color:#D2BCAE }
```

If you want to add a box shadow in that color use:

Here you see how a box with a 4 pixel #D2BCAE colored shadow looks like.

```
.boxshadow{ -moz-box-shadow:4px 4px 4px  
4px #D2BCAE; -webkit-box-shadow:4px 4px  
4px 4px #D2BCAE; box-shadow:4px 4px 4px  
4px #D2BCAE }
```

Background

The CSS property to change the background color of an element to Hex D2BCAE is called "background". The background property can be set on classes, ids or directly on the HTML element.

```
.background, #background, body{  
background:#D2BCAE }
```

If only the background color should be changed can be used:

```
.background{ background-color:#D2BCAE }
```

This example shows the color as background, it is applied via the CSS property "background".

To optimize and compress your CSS code, you can use our [online CSS compressor and optimizer](#) based on csstidy. If you want to create a linear or radial gradient as background or border, check our [CSS Gradient Generator](#).

Hey! You found this booklet interesting? Support Converting Colors with the new Membership Option!

The pro membership hides all ads, plus gives you double the colors in the color bucket, and more awesome pro features!

[Learn more, Memberships starting at \\$2.50/m!](#)

**Follow me
on Twitter!**

@ConvertingColor