

# Converting Colors

Hex(D2BDB3)

Have a look what the booklet for  
Hex(D2BDB3) contains.

<b>Hex(D2BDB3)</b> .....	3
<i><b>Conversions</b></i> .....	4
<i><b>Details</b></i> .....	6
<i><b>Harmonies</b></i> .....	11
<i><b>Previews</b></i> .....	23
<i><b>Color Blindness Simulation</b></i> .....	26
<i><b>CSS Examples</b></i> .....	29

# **Color**

**Hex(D2BDB3)**

# Conversions

## Conversions Part 1

Format	Color
Hex	D2BDB3
RGB	210, 189, 179
RGB Percent	82%, 74%, 70%
CMY	0.1765, 0.2588, 0.2980
CMYK	0.00, 0.10, 0.15, 0.18
HSL	19°, 26%, 76%
HSV	19°, 15%, 82%
XYZ	52.9126, 53.3515, 50.1569
YIQ	194.1390, 15.7260, 1.3420

# Conversions

## Conversions Part 2

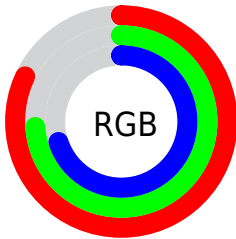
Format	Color
<a href="#">RYB</a>	<a href="#">210, 194, 179</a>
Decimal	<a href="#">13811123</a>
CIELab	<a href="#">78.08, 5.79, 7.75</a>
CIElCh	<a href="#">78, 9.674, 53.228</a>
Yxy	<a href="#">53.3515, 0.3383, 0.3411</a>
Android (android.graphics.Color)	<a href="#">4292001203</a> ( <a href="#">0xFFD2BDB3</a> )
YUV	<a href="#">194.1390, -7.4635, 13.9101</a>
Hunter-Lab	<a href="#">73.0421, 1.4839, 10.4159</a>

# Details

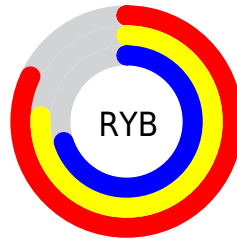
The Hex color **D2BDB3** is a light color, and the websafe version is hex **CCCCCC**. A complement of this color would be **B3C8D2**, and the grayscale version is **C2C2C2**.

A 20% lighter version of the original color is **FFF5EB**, and **9B887E** is the 20% darker color. If you saturate the color by 10%, you get **D2AF9E**, and if you desaturate by 10%, it is **D2CBC8**.

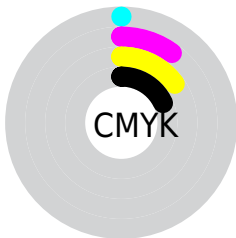
# Distribution



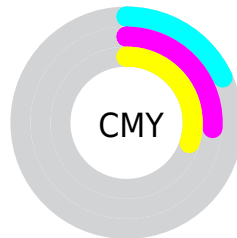
- Red (82%)
- Green (74%)
- Blue (70%)



- Red (82%)
- Yellow (76%)
- Blue (70%)



- Cyan (0%)
- Magenta (10%)
- Yellow (15%)
- Black (18%)



- Cyan (18%)
- Magenta (26%)
- Yellow (30%)

# Brightness & Saturation Gradients

These gradients show how the Hex color D2BDB3 changes by changing the brightness by 10 percent. The first figure shows a shift by +10% for each color and the second figure -10%.

Similar to the brightness gradients but the following saturation gradients show a change of the Hex color D2BDB3 by changing the saturation by 10% instead.



 D2BDB3

 D2BDB3

FFFFFF

 B6A298

 FFF5EB

 9B887E

 816E65

 68564D

 4F3F37

 382921

 23150B

 000000

 D2BDB3

 D2BDB3

 D2AF9E

 D2CBC8

 D2A189

 D2D9DD

 D29274

 D2E8F2

 D2845F

 D2F6FF

 D2764A

 D2FFFF

 D26835

 D25920

 D24B0B

 D24400

# Harmonies

## Analogous

The Analogous color harmony consists of three colors that are next to each other on the color wheel.



D5BBBA



D2BDB3



CBC0AF

# Triad

The Triadic color harmony groups three colors that are evenly spaced from another and form a triangle on the color wheel.



D2BDB3



AEC6BF



C0BFD1

# Complementary

The Complementary color scheme is a pair of colors which are on the opposite of each other on the color wheel.



D2BDB3



B3C8D2

# Split Complementary

Split-complementary colors differ from the complementary color scheme. The scheme consists of three colors, the original color and two neighbors of the complement color.



B6C2D3



D2BDB3



ABC6C8

# Square

The Square scheme is like the rectangle color scheme, but the four colors are evenly spaced on the color wheel.



D2BDB3



B7C5B6



AEC5CF



CBBDC6

# Rectangle

The Rectangle color scheme consists of four colors that form a rectangle on the color wheel.



D2BDB3



C4C2B0



AEC5CF



BDC0D2



# Sweetspot

The Sweet Spot groups the original color and five complimentary colors.



D2BDB3



FFF8F5



D2B3C8



807B79



000000



808080

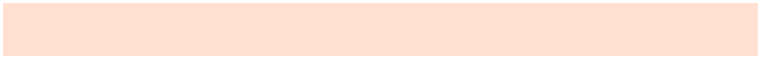


# Same Dimension

The Same Dimension uses a secret algorithm to generate beautiful new colors.



D2BDB3



FFE0D1



D2CCB3



69615E



A83600



290D00

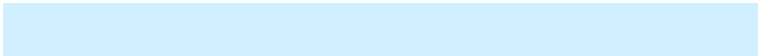


# Inverse Universe

The Inverse Universe completely reimagines the original color for something new.



B3C8D2



D1F0FF



B3B9D2



5E6569



0072A8

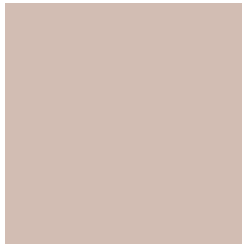


001C29



# Previews

## White Background



This preview shows how the Hex color D2BDB3 looks on a white background.

## Color Contrast Check

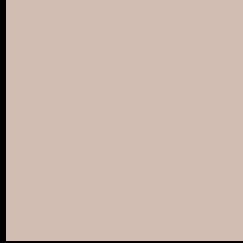
Large Text (above 18pt) WCAG AA × Fail

Any Text WCAG AA × Fail

Large Text (above 18pt) WCAG AAA × Fail

Any Text WCAG AAA × Fail

# Black Background



This preview shows how the Hex color D2BDB3 looks on a black background.

## Color Contrast Check

Large Text (above 18pt) WCAG AA ✓ Pass

Any Text WCAG AA ✓ Pass

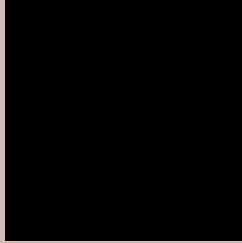
Large Text (above 18pt) WCAG AAA ✓ Pass

Any Text WCAG AAA ✓ Pass

If you want to check with other color combinations, try the [Color Contrast Checker](#).



## Hex D2BDB3 Background



This preview shows how black text looks on a background with the Hex color D2BDB3.



This preview shows how white text looks on a background with the Hex color D2BDB3.

# Color Blindness Simulation

Color vision deficiency is a very complex topic, and I could not describe the different causes any better than Wikipedia does, so if you want to learn more, you should check out their [article about color blindness](#).


## Dichromacy



**Original Color**  
D2BDB3

**Protanopia**  
C8C0B5

**Deuteranopia**  
D9BAB4



**Tritanopia**  
D5BAC8

# Trichromacy



**Original Color**  
D2BDB3

**Protanomaly**  
CCBFB4

**Deuteranomaly**  
D6BBB4

**Tritanomaly**  
D4BBC0

# Monochromacy



**Original Color**  
D2BDB3

**Achromatopsia**  
C2C2C2

**Achromatomaly**  
C8C0BD

# CSS Examples

## Text

The CSS property to change the color of the text to Hex D2BDB3 is called "color". The color property can be set on classes, ids or directly on the HTML element.

This example shows how text in the color #D2BDB3 looks like.

```
.text, #text, p{  
    color:#D2BDB3  
}
```

If you want to add a text shadow in that color use the text-shadow property, you can generate a text shadow directly with our [CSS Text Shadow Generator](#).

Here you see how black text with a 4 pixel #D2BDB3 colored shadow looks like.

```
.shadow{ text-shadow: 4px 4px 2px #D2BDB3
}
```

## Border

The CSS property to change the border of an element to Hex D2BDB3 is called "border". The border property can be set on classes, ids or directly on the HTML element.

This example shows the color as border, it can be applied via the CSS property "border" or "border-color".

```
.border, #border, table{ border:4px solid
#D2BDB3 }
```

If only the border color should be changed use the property `border-color`.

```
.border{ border-color:#D2BDB3 }
```

If you want to add a box shadow in that color use:

Here you see how a box with a 4 pixel #D2BDB3 colored shadow looks like.

```
.boxshadow{ -moz-box-shadow:4px 4px 4px  
4px #D2BDB3; -webkit-box-shadow:4px 4px  
4px 4px #D2BDB3; box-shadow:4px 4px 4px  
4px #D2BDB3 }
```

# Background

The CSS property to change the background color of an element to Hex D2BDB3 is called "background". The background property can be set on classes, ids or directly on the HTML element.

```
.background, #background, body{  
background:#D2BDB3 }
```

If only the background color should be changed can be used:

```
.background{ background-color:#D2BDB3 }
```

This example shows the color as background, it is applied via the CSS property "background".

To optimize and compress your CSS code, you can use our [online CSS compressor and optimizer](#) based on csstidy. If you want to create a linear or radial gradient as background or border, check our [CSS Gradient Generator](#).



Hey! You found this booklet interesting? Support Converting Colors with the new Membership Option!

The pro membership hides all ads, plus gives you double the colors in the color bucket, and more awesome pro features!

**[Learn more, Memberships starting at \\$2.50/m!](#)**

**Follow me  
on Twitter!**

@ConvertingColor