

Converting Colors

Hex(D2BEBE)

Have a look what the booklet for
Hex(D2BEBE) contains.

Hex(D2BEBE)	3
<i>Conversions</i>	4
<i>Details</i>	6
<i>Harmonies</i>	11
<i>Previews</i>	23
<i>Color Blindness Simulation</i>	26
<i>CSS Examples</i>	29

Color

Hex(D2BEBE)

Conversions

Conversions Part 1

Format	Color
Hex	D2BEBE
RGB	210, 190, 190
RGB Percent	82%, 75%, 75%
CMY	0.1765, 0.2549, 0.2549
CMYK	0.00, 0.10, 0.10, 0.18
HSL	0°, 18%, 78%
HSV	0°, 10%, 82%
XYZ	54.2861, 54.2463, 56.3246
YIQ	195.9800, 11.9200, 4.2400

Conversions

Conversions Part 2

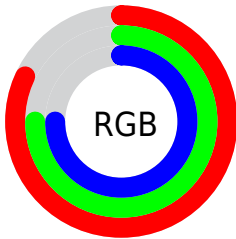
Format	Color
R_{YB}	210, 190, 190
Decimal	13811390
CIE Lab	78.61, 7.07, 2.56
CIE LCh	79, 7.516, 19.936
Yxy	54.2463, 0.3293, 0.3291
Android (android.graphics.Color)	4292001470 (0xFFD2BEBE)
YUV	195.9800, -2.9481, 12.2955
Hunter-Lab	73.6521, 2.6743, 6.2151

Details

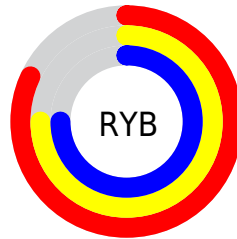
The Hex color **D2BEBE** is a light color, and the websafe version is hex **CCCCCC**. A complement of this color would be **BED2D2**, and the grayscale version is **C4C4C4**.

A 20% lighter version of the original color is **FFF6F6**, and **9B8989** is the 20% darker color. If you saturate the color by 10%, you get **D2A9A9**, and if you desaturate by 10%, it is **D2D3D3**.

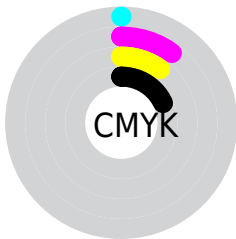
Distribution



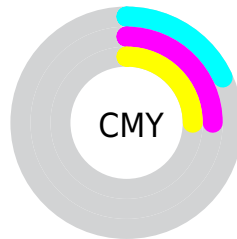
- Red (82%)
- Green (75%)
- Blue (75%)



- Red (82%)
- Yellow (75%)
- Blue (75%)



- Cyan (0%)
- Magenta (10%)
- Yellow (10%)
- Black (18%)



- Cyan (18%)
- Magenta (25%)
- Yellow (25%)

Brightness & Saturation Gradients

These gradients show how the Hex color D2BEBE changes by changing the brightness by 10 percent. The first figure shows a shift by +10% for each color and the second figure -10%.

Similar to the brightness gradients but the following saturation gradients show a change of the Hex color D2BEBE by changing the saturation by 10% instead.

 D2BEBE

 D2BEBE

FFFFFF

 B6A3A3

 FFF6F6

 9B8989

 816F6F

 685757

 504040

 392A2A

 231515

 030000

 000000

 D2BEBE

 D2BEBE

 D2A9A9

 D2D3D3

 D29494

 D2E8E8

 D27F7F

 D2FDFD

 D26A6A

 D2FFFF

 D25555

 D24040

 D22B2B

 D21616

 D20101

Harmonies

Analogous

The Analogous color harmony consists of three colors that are next to each other on the color wheel.



D0BEC5



D2BEBE



D0BFB8

Triad

The Triadic color harmony groups three colors that are evenly spaced from another and form a triangle on the color wheel.



D2BEBE



BBC5B9



B9C4D0

Complementary

The Complementary color scheme is a pair of colors which are on the opposite of each other on the color wheel.



D2BEBE



BED2D2

Split Complementary

Split-complementary colors differ from the complementary color scheme. The scheme consists of three colors, the original color and two neighbors of the complement color.



B3C6CD



D2BEBE



B5C7C0

Square

The Square scheme is like the rectangle color scheme, but the four colors are evenly spaced on the color wheel.



D2BEBE



C3C3B5



B2C7C7



C1C1D0

Rectangle

The Rectangle color scheme consists of four colors that form a rectangle on the color wheel.



D2BEBE



CDC0B6



B2C7C7



B7C5CF

Sweetspot

The Sweet Spot groups the original color and five complimentary colors.



D2BEBE



FFF7F7



D2BED2



807A7A



000000



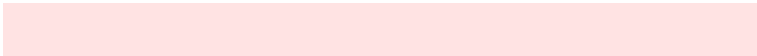
808080

Same Dimension

The Same Dimension uses a secret algorithm to generate beautiful new colors.



D2BEBE



FFE3E3



D2C8BE



695E5E



A80000



290000

Inverse Universe

The Inverse Universe completely reimagines the original color for something new.



BED2D2



E3FFFF



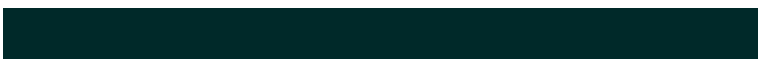
BEC8D2



5E6969



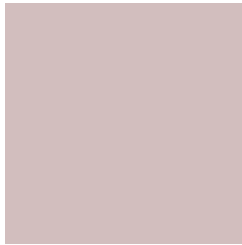
00A8A8



002929

Previews

White Background



This preview shows how the Hex color D2BEBE looks on a white background.

Color Contrast Check

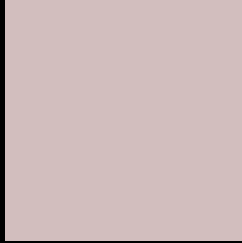
Large Text (above 18pt) WCAG AA × Fail

Any Text WCAG AA × Fail

Large Text (above 18pt) WCAG AAA × Fail

Any Text WCAG AAA × Fail

Black Background



This preview shows how the Hex color D2BEBE looks on a black background.

Color Contrast Check

Large Text (above 18pt) WCAG AA ✓ Pass

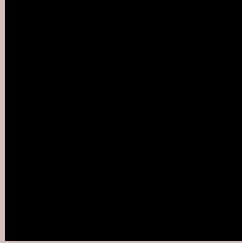
Any Text WCAG AA ✓ Pass

Large Text (above 18pt) WCAG AAA ✓ Pass

Any Text WCAG AAA ✓ Pass

If you want to check with other color combinations, try the [Color Contrast Checker](#).

Hex D2BEBE Background



This preview shows how black text looks on a background with the Hex color D2BEBE.



This preview shows how white text looks on a background with the Hex color D2BEBE.

Color Blindness Simulation

Color vision deficiency is a very complex topic, and I could not describe the different causes any better than Wikipedia does, so if you want to learn more, you should check out their [article about color blindness](#).

Dichromacy



Original Color
D2BEBE

Protanopia
C7C2C0

Deuteranopia
D7BCBE



Tritanopia
D4BCCB

Trichromacy



Original Color
D2BEBE

Protanomaly
CBC1BF

Deuteranomaly
D5BDBE

Tritanomaly
D3BDC6

Monochromacy



Original Color
D2BEBE

Achromatopsia
C4C4C4

Achromatomaly
C9C2C2

CSS Examples

Text

The CSS property to change the color of the text to Hex D2BEBE is called "color". The color property can be set on classes, ids or directly on the HTML element.

This example shows how text in the color #D2BEBE looks like.

```
.text, #text, p{  
    color:#D2BEBE  
}
```

If you want to add a text shadow in that color use the text-shadow property, you can generate a text shadow directly with our [CSS Text Shadow Generator](#).

Here you see how black text with a 4 pixel #D2BEBE colored shadow looks like.

```
.shadow{ text-shadow: 4px 4px 2px #D2BEBE
}
```

Border

The CSS property to change the border of an element to Hex D2BEBE is called "border". The border property can be set on classes, ids or directly on the HTML element.

This example shows the color as border, it can be applied via the CSS property "border" or "border-color".

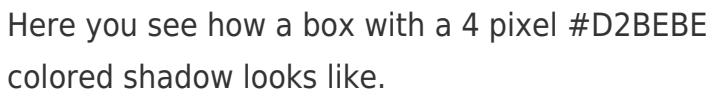
```
.border, #border, table{ border:4px solid
#D2BEBE }
```

If only the border color should be changed use the property `border-color`.

```
.border{ border-color:#D2BEBE }
```

If you want to add a box shadow in that color use:

Here you see how a box with a 4 pixel #D2BEBE colored shadow looks like.



```
.boxshadow{ -moz-box-shadow:4px 4px 4px  
4px #D2BEBE; -webkit-box-shadow:4px 4px  
4px 4px #D2BEBE; box-shadow:4px 4px 4px  
4px #D2BEBE }
```

Background

The CSS property to change the background color of an element to Hex D2BEBE is called "background". The background property can be set on classes, ids or directly on the HTML element.

```
.background, #background, body{  
background:#D2BEBE }
```

If only the background color should be changed can be used:

```
.background{ background-color:#D2BEBE }
```

This example shows the color as background, it is applied via the CSS property "background".

To optimize and compress your CSS code, you can use our [online CSS compressor and optimizer](#) based on csstidy. If you want to create a linear or radial gradient as background or border, check our [CSS Gradient Generator](#).

Hey! You found this booklet interesting? Support Converting Colors with the new Membership Option!

The pro membership hides all ads, plus gives you double the colors in the color bucket, and more awesome pro features!

[Learn more, Memberships starting at \\$2.50/m!](#)

**Follow me
on Twitter!**

@ConvertingColor