

# Converting Colors

Hex(D2C2C7)

Have a look what the booklet for  
Hex(D2C2C7) contains.

<b>Hex(D2C2C7)</b> .....	3
<b><i>Conversions</i></b> .....	4
<b><i>Details</i></b> .....	6
<b><i>Harmonies</i></b> .....	11
<b><i>Previews</i></b> .....	23
<b><i>Color Blindness Simulation</i></b> .....	26
<b><i>CSS Examples</i></b> .....	29

# **Color**

**Hex(D2C2C7)**

# Conversions

## Conversions Part 1

Format	Color
Hex	D2C2C7
RGB	210, 194, 199
RGB Percent	82%, 76%, 78%
CMY	0.1765, 0.2392, 0.2196
CMYK	0.00, 0.08, 0.05, 0.18
HSL	341°, 15%, 79%
HSV	341°, 8%, 82%
XYZ	56.1789, 56.4087, 61.9599
YIQ	199.3540, 7.9310, 4.9470

# Conversions

## Conversions Part 2

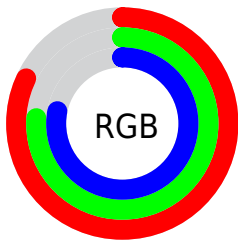
Format	Color
RYP	210, 194, 199
Decimal	13812423
CIE Lab	79.85, 6.48, -0.48
CIE LCh	80, 6.502, 355.738
Yxy	56.4087, 0.3219, 0.3232
Android (android.graphics.Color)	4292002503 (0xFFD2C2C7)
YUV	199.3540, -0.1745, 9.3365
Hunter-Lab	75.1057, 2.0825, 3.6617

# Details

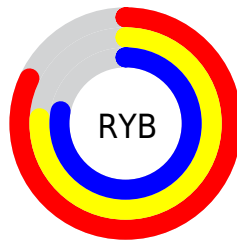
The Hex color **D2C2C7** is a light color, and the websafe version is hex **CCCCCC**. A complement of this color would be **C2D2CD**, and the grayscale version is **C7C7C7**.

A 20% lighter version of the original color is **FFFAFF**, and **9B8C91** is the 20% darker color. If you saturate the color by 10%, you get **D2ADB9**, and if you desaturate by 10%, it is **D2D7D5**.

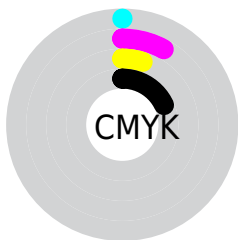
# Distribution



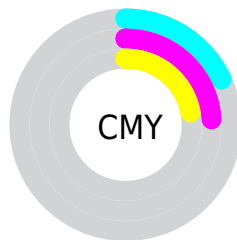
- Red (82%)
- Green (76%)
- Blue (78%)



- Red (82%)
- Yellow (76%)
- Blue (78%)



- Cyan (0%)
- Magenta (8%)
- Yellow (5%)
- Black (18%)



- Cyan (18%)
- Magenta (24%)
- Yellow (22%)

# Brightness & Saturation Gradients

These gradients show how the Hex color D2C2C7 changes by changing the brightness by 10 percent. The first figure shows a shift by +10% for each color and the second figure -10%.

Similar to the brightness gradients but the following saturation gradients show a change of the Hex color D2C2C7 by changing the saturation by 10% instead.



 D2C2C7


 D2C2C7

FFFFFF

 B6A7AC

 FFFAFF

 9B8C91

 817378

 685A5F

 504347

 392D31

 23181C

 0E0001

 000000

 D2C2C7

 D2C2C7

 D2ADB9

 D2D7D5

 D298AA

 D2ECE4

 D2839C

 D2FFF2

 D26E8D

 D2FFFF

 D2597F

 D24470

 D22F62

 D21A54

 D20545

# Harmonies

## Analogous

The Analogous color harmony consists of three colors that are next to each other on the color wheel.



CDC3CD



D2C2C7



D3C2C1

# Triad

The Triadic color harmony groups three colors that are evenly spaced from another and form a triangle on the color wheel.



D2C2C7



C5C7BB



B9C8D0

# Complementary

The Complementary color scheme is a pair of colors which are on the opposite of each other on the color wheel.



D2C2C7



C2D2CD

# Split Complementary

Split-complementary colors differ from the complementary color scheme. The scheme consists of three colors, the original color and two neighbors of the complement color.



B7C9CB



D2C2C7



BEC9BF

# Square

The Square scheme is like the rectangle color scheme, but the four colors are evenly spaced on the color wheel.



D2C2C7



CCC5BA



B9CAC5



BFC7D2

# Rectangle

The Rectangle color scheme consists of four colors that form a rectangle on the color wheel.



D2C2C7



D2C3BD



B9CAC5



B8C9CE



# Sweetspot

The Sweet Spot groups the original color and five complimentary colors.



D2C2C7



FFFAFB



CDC2D2



807D7E



000000



808080



# Same Dimension

The Same Dimension uses a secret algorithm to generate beautiful new colors.



D2C2C7



FFE8EF



D2C5C2



695E61



A80035



29000D



# Inverse Universe

The Inverse Universe completely reimagines the original color for something new.



D2C2C7



FFE8EF



C2CFD2



695E61



A80035

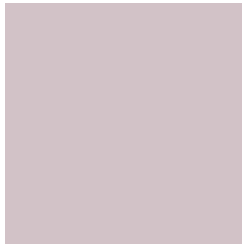


29000D



# Previews

## White Background



This preview shows how the Hex color D2C2C7 looks on a white background.

## Color Contrast Check

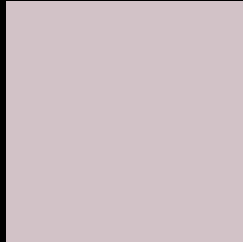
Large Text (above 18pt) WCAG AA × Fail

Any Text WCAG AA × Fail

Large Text (above 18pt) WCAG AAA × Fail

Any Text WCAG AAA × Fail

# Black Background



This preview shows how the Hex color D2C2C7 looks on a black background.

## Color Contrast Check

Large Text (above 18pt) WCAG AA ✓ Pass

Any Text WCAG AA ✓ Pass

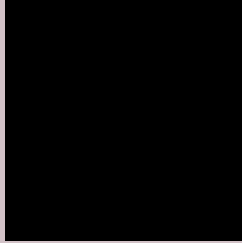
Large Text (above 18pt) WCAG AAA ✓ Pass

Any Text WCAG AAA ✓ Pass

If you want to check with other color combinations, try the [Color Contrast Checker](#).



## Hex D2C2C7 Background



This preview shows how black text looks on a background with the Hex color D2C2C7.

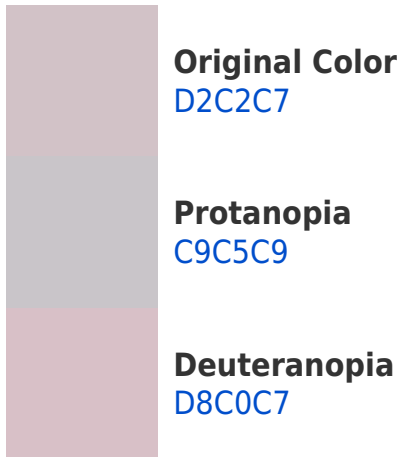


This preview shows how white text looks on a background with the Hex color D2C2C7.

# Color Blindness Simulation

Color vision deficiency is a very complex topic, and I could not describe the different causes any better than Wikipedia does, so if you want to learn more, you should check out their [article about color blindness](#).

## Dichromacy





**Tritanopia**  
D3C1D0

# Trichromacy



**Original Color**  
D2C2C7

**Protanomaly**  
CCC4C8

**Deuteranomaly**  
D6C1C7

**Tritanomaly**  
D3C1CD

# Monochromacy



**Original Color**  
D2C2C7

**Achromatopsia**  
C7C7C7

**Achromatomaly**  
CBC5C7

# CSS Examples

## Text

The CSS property to change the color of the text to Hex D2C2C7 is called "color". The color property can be set on classes, ids or directly on the HTML element.

This example shows how text in the color #D2C2C7 looks like.

```
.text, #text, p{  
    color:#D2C2C7  
}
```

If you want to add a text shadow in that color use the text-shadow property, you can generate a text shadow directly with our [CSS Text Shadow Generator](#).

Here you see how black text with a 4 pixel #D2C2C7 colored shadow looks like.

```
.shadow{ text-shadow: 4px 4px 2px #D2C2C7
}
```

## Border

The CSS property to change the border of an element to Hex D2C2C7 is called "border". The border property can be set on classes, ids or directly on the HTML element.

This example shows the color as border, it can be applied via the CSS property "border" or "border-color".

```
.border, #border, table{ border:4px solid
#D2C2C7 }
```

If only the border color should be changed use the property `border-color`.

```
.border{ border-color:#D2C2C7 }
```

If you want to add a box shadow in that color use:

Here you see how a box with a 4 pixel #D2C2C7 colored shadow looks like.

```
.boxshadow{ -moz-box-shadow:4px 4px 4px  
4px #D2C2C7; -webkit-box-shadow:4px 4px  
4px 4px #D2C2C7; box-shadow:4px 4px 4px  
4px #D2C2C7 }
```

# Background

The CSS property to change the background color of an element to Hex D2C2C7 is called "background". The background property can be set on classes, ids or directly on the HTML element.

```
.background, #background, body{  
background:#D2C2C7 }
```

If only the background color should be changed can be used:

```
.background{ background-color:#D2C2C7 }
```

This example shows the color as background, it is applied via the CSS property "background".

To optimize and compress your CSS code, you can use our [online CSS compressor and optimizer](#) based on csstidy. If you want to create a linear or radial gradient as background or border, check our [CSS Gradient Generator](#).



Hey! You found this booklet interesting? Support Converting Colors with the new Membership Option!

The pro membership hides all ads, plus gives you double the colors in the color bucket, and more awesome pro features!

**[Learn more, Memberships starting at \\$2.50/m!](#)**

**Follow me  
on Twitter!**

@ConvertingColor