

Converting Colors

Hex(D3407B)

Have a look what the booklet for
Hex(D3407B) contains.

Hex(D3407B)	3
<i>Conversions</i>	4
<i>Details</i>	6
<i>Harmonies</i>	11
<i>Previews</i>	23
<i>Color Blindness Simulation</i>	26
<i>CSS Examples</i>	29

Color

Hex(D3407B)

Conversions

Conversions Part 1

Format	Color
Hex	D3407B
RGB	211, 64, 123
RGB Percent	83%, 25%, 48%
CMY	0.1725, 0.7490, 0.5176
CMYK	0.00, 0.70, 0.42, 0.17
HSL	336°, 63%, 54%
HSV	336°, 70%, 83%
XYZ	32.2725, 18.9457, 20.6948
YIQ	114.6790, 68.6730, 49.5130

Conversions

Conversions Part 2

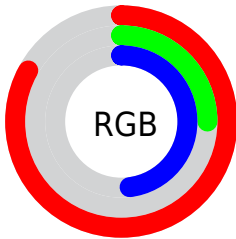
Format	Color
R_{YB}	211, 64, 123
Decimal	13844603
CIE Lab	50.62, 61.65, -0.12
CIE LCh	51, 61.649, 359.886
Yxy	18.9457, 0.4488, 0.2635
Android (android.graphics.Color)	4292034683 (0xFFD3407B)
YUV	114.6790, 4.1023, 84.4735
Hunter-Lab	43.5267, 56.1756, 2.2792

Details

The Hex color **D3407B** is a dark color, and the websafe version is hex **CC3366**. The color can be described as middle muted rose. A complement of this color would be **40D398**, and the grayscale version is **737373**.

A 20% lighter version of the original color is **FF7AAF**, and **97004B** is the 20% darker color. If you saturate the color by 10%, you get **D32B6E**, and if you desaturate by 10%, it is **D35588**.

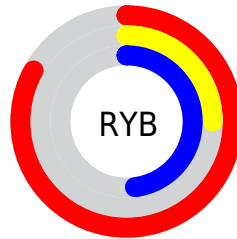
Distribution



Red (83%)

Green (25%)

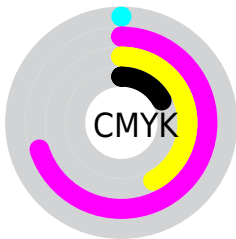
Blue (48%)



Red (83%)

Yellow (25%)

Blue (48%)

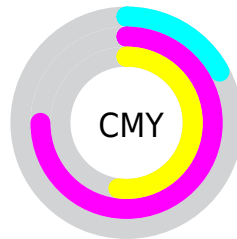


Cyan (0%)

Magenta (70%)

Yellow (42%)

Black (17%)



Cyan (17%)

Magenta (75%)

Yellow (52%)

Brightness & Saturation Gradients

These gradients show how the Hex color D3407B changes by changing the brightness by 10 percent. The first figure shows a shift by +10% for each color and the second figure -10%.

Similar to the brightness gradients but the following saturation gradients show a change of the Hex color D3407B by changing the saturation by 10% instead.

 D3407B

 D3407B

FFFFFF

 B51E62

 FF7AAF

 97004B

 FF96CB

 7A0034

 FFB3E7

 5D001F

 FFD0FF

 430006

 FFEDFF

 230001

 000000

 D3407B

 D3407B

 D32B6E

 D35588

 D31662

 D36A94

 D30155

 D37FA1

 D30055

 D394AE

 D3AABA

 D3BFC7

 D3D4D3

 D3E9E0

 D3FEED

Harmonies

Analogous

The Analogous color harmony consists of three colors that are next to each other on the color wheel.



B751AE



D3407B



D24A47

Triad

The Triadic color harmony groups three colors that are evenly spaced from another and form a triangle on the color wheel.



D3407B



5D8406



008BD3

Complementary

The Complementary color scheme is a pair of colors which are on the opposite of each other on the color wheel.



D3407B



40D398

Split Complementary

Split-complementary colors differ from the complementary color scheme. The scheme consists of three colors, the original color and two neighbors of the complement color.



0090AC



D3407B



008D40

Square

The Square scheme is like the rectangle color scheme, but the four colors are evenly spaced on the color wheel.



D3407B



917600



009077



007FE2

Rectangle

The Rectangle color scheme consists of four colors that form a rectangle on the color wheel.



D3407B



C35928



009077



008DC8

Sweetspot

The Sweet Spot groups the original color and five complimentary colors.



D3407B



FFC9DF



9640D3



80606C



000000



808080

Same Dimension

The Same Dimension uses a secret algorithm to generate beautiful new colors.



D3407B



FF297F



D34C40



695E62



A80044



290010

Inverse Universe

The Inverse Universe completely reimagines the original color for something new.



D3407B



FF297F



40C7D3



695E62



A80044



290010

Previews

White Background



This preview shows how the Hex color D3407B looks on a white background.

Color Contrast Check

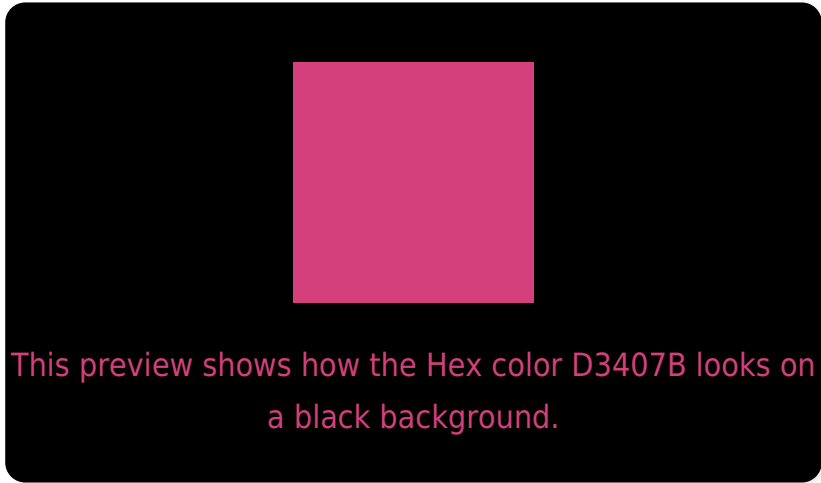
Large Text (above 18pt) WCAG AA ✓ Pass

Any Text WCAG AA × Fail

Large Text (above 18pt) WCAG AAA × Fail

Any Text WCAG AAA × Fail

Black Background



Color Contrast Check

Large Text (above 18pt) WCAG AA ✓ Pass

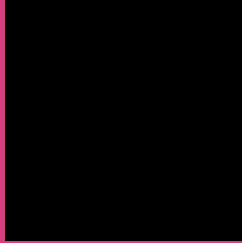
Any Text WCAG AA ✓ Pass

Large Text (above 18pt) WCAG AAA ✓ Pass

Any Text WCAG AAA × Fail

If you want to check with other color combinations, try the [Color Contrast Checker](#).

Hex D3407B Background



This preview shows how black text looks on a background with the Hex color D3407B.



This preview shows how white text looks on a background with the Hex color D3407B.

Color Blindness Simulation

Color vision deficiency is a very complex topic, and I could not describe the different causes any better than Wikipedia does, so if you want to learn more, you should check out their [article about color blindness](#).

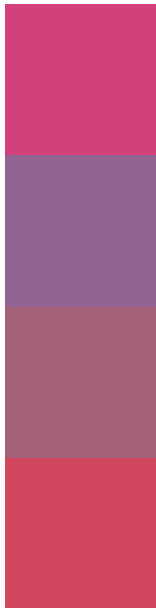
Dichromacy





Tritanopia
D04A4F

Trichromacy



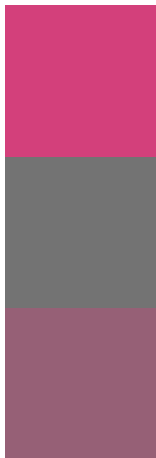
Original Color
D3407B

Protanomaly
936491

Deuteranomaly
A36277

Tritanomaly
D1465F

Monochromacy



Original Color
D3407B

Achromatopsia
737373

Achromatomaly
966076

CSS Examples

Text

The CSS property to change the color of the text to Hex D3407B is called "color". The color property can be set on classes, ids or directly on the HTML element.

This example shows how text in the color #D3407B looks like.

```
.text, #text, p{  
    color:#D3407B  
}
```

If you want to add a text shadow in that color use the text-shadow property, you can generate a text shadow directly with our [CSS Text Shadow Generator](#).

Here you see how black text with a 4 pixel #D3407B colored shadow looks like.

```
.shadow{ text-shadow: 4px 4px 2px #D3407B
}
```

Border

The CSS property to change the border of an element to Hex D3407B is called "border". The border property can be set on classes, ids or directly on the HTML element.

This example shows the color as border, it can be applied via the CSS property "border" or "border-color".

```
.border, #border, table{ border:4px solid
#D3407B }
```

If only the border color should be changed use the property `border-color`.

```
.border{ border-color:#D3407B }
```

If you want to add a box shadow in that color use:

Here you see how a box with a 4 pixel #D3407B colored shadow looks like.

```
.boxshadow{ -moz-box-shadow:4px 4px 4px  
4px #D3407B; -webkit-box-shadow:4px 4px  
4px 4px #D3407B; box-shadow:4px 4px 4px  
4px #D3407B }
```

Background

The CSS property to change the background color of an element to Hex D3407B is called "background". The background property can be set on classes, ids or directly on the HTML element.

```
.background, #background, body{  
background:#D3407B }
```

If only the background color should be changed can be used:

```
.background{ background-color:#D3407B }
```

This example shows the color as background, it is applied via the CSS property "background".

To optimize and compress your CSS code, you can use our [online CSS compressor and optimizer](#) based on csstidy. If you want to create a linear or radial gradient as background or border, check our [CSS Gradient Generator](#).

Hey! You found this booklet interesting? Support Converting Colors with the new Membership Option!

The pro membership hides all ads, plus gives you double the colors in the color bucket, and more awesome pro features!

[Learn more, Memberships starting at \\$2.50/m!](#)

**Follow me
on Twitter!**

@ConvertingColor