

Converting Colors

Hex(D3446E)

Have a look what the booklet for
Hex(D3446E) contains.

Hex(D3446E)	3
<i>Conversions</i>	4
<i>Details</i>	6
<i>Harmonies</i>	11
<i>Previews</i>	23
<i>Color Blindness Simulation</i>	26
<i>CSS Examples</i>	29

Color

Hex(D3446E)

Conversions

Conversions Part 1

Format	Color
Hex	D3446E
RGB	211, 68, 110
RGB Percent	83%, 27%, 43%
CMY	0.1725, 0.7333, 0.5686
CMYK	0.00, 0.68, 0.48, 0.17
HSL	342°, 62%, 55%
HSV	342°, 68%, 83%
XYZ	31.7456, 19.1089, 16.7671
YIQ	115.5450, 71.7460, 43.3780

Conversions

Conversions Part 2

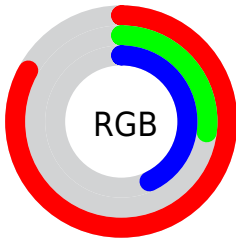
Format	Color
R_{YB}	211, 68, 110
Decimal	13845614
CIE _{Lab}	50.81, 58.92, 8.00
CIE _{LCh}	51, 59.458, 7.730
Yxy	19.1089, 0.4695, 0.2826
Android (android.graphics.Color)	4292035694 (0xFFD3446E)
YUV	115.5450, -2.7337, 83.7140
Hunter-Lab	43.7137, 53.1303, 7.8581

Details

The Hex color **D3446E** is a dark color, and the websafe version is hex **CC3366**. The color can be described as dark muted rose. A complement of this color would be **44D3A9**, and the grayscale version is **747474**.

A 20% lighter version of the original color is **FF7DA1**, and **97003F** is the 20% darker color. If you saturate the color by 10%, you get **D32F5F**, and if you desaturate by 10%, it is **D3597D**.

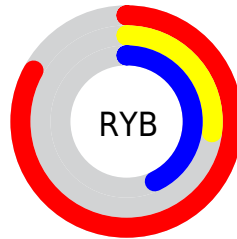
Distribution



Red (83%)

Green (27%)

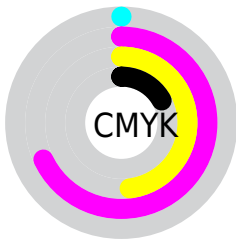
Blue (43%)



Red (83%)

Yellow (27%)

Blue (43%)

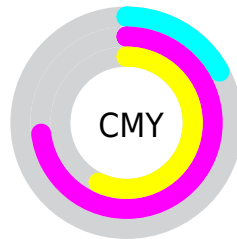


Cyan (0%)

Magenta (68%)

Yellow (48%)

Black (17%)



Cyan (17%)

Magenta (73%)

Yellow (57%)

Brightness & Saturation Gradients

These gradients show how the Hex color D3446E changes by changing the brightness by 10 percent. The first figure shows a shift by +10% for each color and the second figure -10%.

Similar to the brightness gradients but the following saturation gradients show a change of the Hex color D3446E by changing the saturation by 10% instead.

 D3446E

 D3446E

FFFFFF

 B52456

 FF7DA1

 97003F

 FF99BC

 7A0029

 FFB5D8

 5C0015

 FFD2F4

 420003

 FFF0FF

 210001

 000000

 D3446E

 D3446E

 D32F5F

 D3597D

 D31A50

 D36E8C

 D30541

 D3839B

 D3003E

 D398AA

 D3ADB9

 D3C3C7

 D3D8D6

 D3EDE5

 D3FFF4

Harmonies

Analogous

The Analogous color harmony consists of three colors that are next to each other on the color wheel.



BF4EA1



D3446E



CB523D

Triad

The Triadic color harmony groups three colors that are evenly spaced from another and form a triangle on the color wheel.



D3446E



4F871F



0089D7

Complementary

The Complementary color scheme is a pair of colors which are on the opposite of each other on the color wheel.



D3446E



44D3A9

Split Complementary

Split-complementary colors differ from the complementary color scheme. The scheme consists of three colors, the original color and two neighbors of the complement color.



008FB6



D3446E



008E50

Square

The Square scheme is like the rectangle color scheme, but the four colors are evenly spaced on the color wheel.



D3446E



857B00



009085



007BDE

Rectangle

The Rectangle color scheme consists of four colors that form a rectangle on the color wheel.



D3446E



BA6120



009085



008BCE

Sweetspot

The Sweet Spot groups the original color and five complimentary colors.



D3446E



FFCCDB



A844D3



80616A



000000



808080

Same Dimension

The Same Dimension uses a secret algorithm to generate beautiful new colors.



D3446E



FF306D



D36144



695E61



A80031



29000C

Inverse Universe

The Inverse Universe completely reimagines the original color for something new.



D3446E



FF306D



44B6D3



695E61



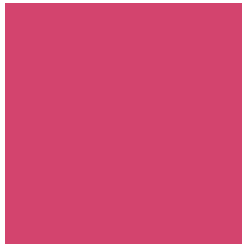
A80031



29000C

Previews

White Background



This preview shows how the Hex color D3446E looks on a white background.

Color Contrast Check

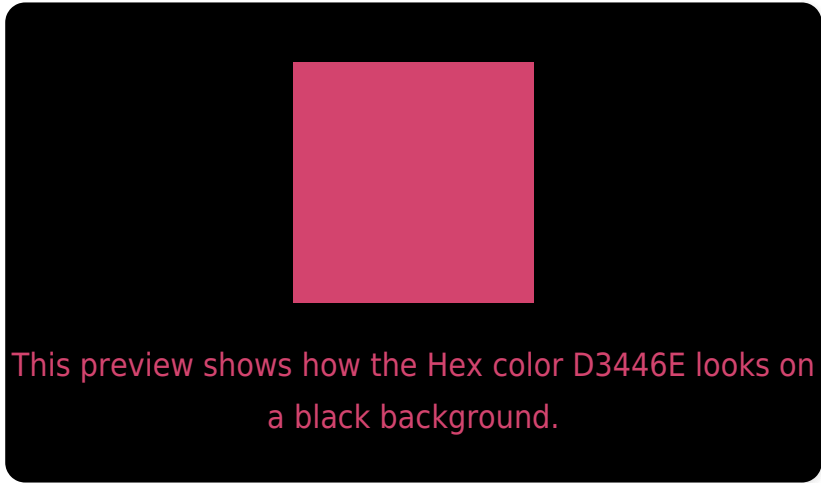
Large Text (above 18pt) WCAG AA ✓ Pass

Any Text WCAG AA ✗ Fail

Large Text (above 18pt) WCAG AAA ✗ Fail

Any Text WCAG AAA ✗ Fail

Black Background



Color Contrast Check

Large Text (above 18pt) WCAG AA ✓ Pass

Any Text WCAG AA ✓ Pass

Large Text (above 18pt) WCAG AAA ✓ Pass

Any Text WCAG AAA × Fail

If you want to check with other color combinations, try the [Color Contrast Checker](#).

Hex D3446E Background



This preview shows how black text looks on a background with the Hex color D3446E.




This preview shows how white text looks on a background with the Hex color D3446E.

Color Blindness Simulation

Color vision deficiency is a very complex topic, and I could not describe the different causes any better than Wikipedia does, so if you want to learn more, you should check out their [article about color blindness](#).

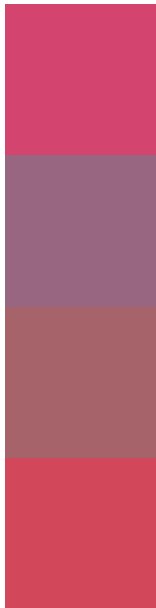
Dichromacy





Tritanopia
D14B4F

Trichromacy



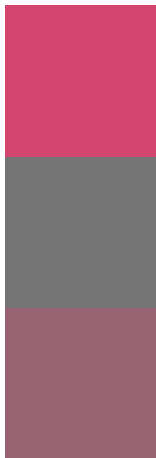
Original Color
D3446E

Protanomaly
986680

Deuteranomaly
A6636A

Tritanomaly
D2485A

Monochromacy



Original Color
D3446E

Achromatopsia
747474

Achromatomaly
976372

CSS Examples

Text

The CSS property to change the color of the text to Hex D3446E is called "color". The color property can be set on classes, ids or directly on the HTML element.

This example shows how text in the color #D3446E looks like.

```
.text, #text, p{  
  color:#D3446E  
}
```

If you want to add a text shadow in that color use the text-shadow property, you can generate a text shadow directly with our [CSS Text Shadow Generator](#).

Here you see how black text with a 4 pixel #D3446E colored shadow looks like.

```
.shadow{ text-shadow: 4px 4px 2px #D3446E
}
```

Border

The CSS property to change the border of an element to Hex D3446E is called "border". The border property can be set on classes, ids or directly on the HTML element.

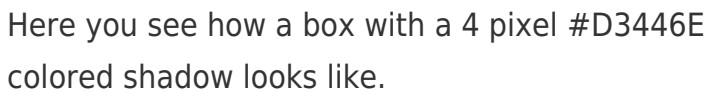
This example shows the color as border, it can be applied via the CSS property "border" or "border-color".

```
.border, #border, table{ border:4px solid
#D3446E }
```

If only the border color should be changed use the property `border-color`.

```
.border{ border-color:#D3446E }
```

If you want to add a box shadow in that color use:



Here you see how a box with a 4 pixel #D3446E colored shadow looks like.

```
.boxshadow{ -moz-box-shadow:4px 4px 4px  
4px #D3446E; -webkit-box-shadow:4px 4px  
4px 4px #D3446E; box-shadow:4px 4px 4px  
4px #D3446E }
```

Background

The CSS property to change the background color of an element to Hex D3446E is called "background". The background property can be set on classes, ids or directly on the HTML element.

```
.background, #background, body{  
background:#D3446E }
```

If only the background color should be changed can be used:

```
.background{ background-color:#D3446E }
```

This example shows the color as background, it is applied via the CSS property "background".

To optimize and compress your CSS code, you can use our [online CSS compressor and optimizer](#) based on csstidy. If you want to create a linear or radial gradient as background or border, check our [CSS Gradient Generator](#).

Hey! You found this booklet interesting? Support Converting Colors with the new Membership Option!

The pro membership hides all ads, plus gives you double the colors in the color bucket, and more awesome pro features!

[Learn more, Memberships starting at \\$2.50/m!](#)

**Follow me
on Twitter!**

@ConvertingColor