

Converting Colors

Hex(D34B85)

Have a look what the booklet for
Hex(D34B85) contains.

Hex(D34B85)	3
<i>Conversions</i>	4
<i>Details</i>	6
<i>Harmonies</i>	11
<i>Previews</i>	23
<i>Color Blindness Simulation</i>	26
<i>CSS Examples</i>	29

Color

Hex(D34B85)

Conversions

Conversions Part 1

Format	Color
Hex	D34B85
RGB	211, 75, 133
RGB Percent	83%, 29%, 52%
CMY	0.1725, 0.7059, 0.4784
CMYK	0.00, 0.64, 0.37, 0.17
HSL	334°, 61%, 56%
HSV	334°, 64%, 83%
XYZ	33.6137, 20.5745, 24.3899
YIQ	122.2760, 62.4380, 46.8700

Conversions

Conversions Part 2

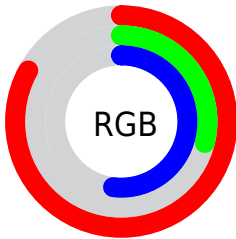
Format	Color
R_{YB}	211, 75, 133
Decimal	13847429
CIE _{Lab}	52.48, 58.41, -3.39
CIE _{LCh}	52, 58.510, 356.675
Yxy	20.5745, 0.4278, 0.2618
Android (android.graphics.Color)	4292037509 (0xFFD34B85)
YUV	122.2760, 5.2869, 77.8109
Hunter-Lab	45.3591, 52.9002, -0.1293

Details

The Hex color **D34B85** is a dark color, and the websafe version is hex **CC3366**. The color can be described as middle muted rose. A complement of this color would be **4BD399**, and the grayscale version is **7A7A7A**.

A 20% lighter version of the original color is **FF83BA**, and **980054** is the 20% darker color. If you saturate the color by 10%, you get **D33679**, and if you desaturate by 10%, it is **D36091**.

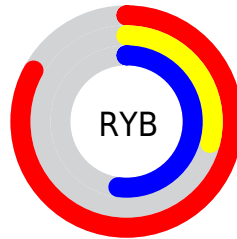
Distribution



Red (83%)

Green (29%)

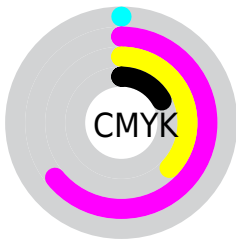
Blue (52%)



Red (83%)

Yellow (29%)

Blue (52%)

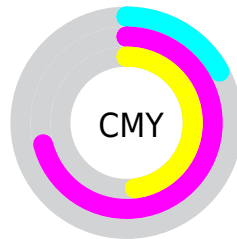


Cyan (0%)

Magenta (64%)

Yellow (37%)

Black (17%)



Cyan (17%)

Magenta (71%)

Yellow (48%)

Brightness & Saturation Gradients

These gradients show how the Hex color D34B85 changes by changing the brightness by 10 percent. The first figure shows a shift by +10% for each color and the second figure -10%.

Similar to the brightness gradients but the following saturation gradients show a change of the Hex color D34B85 by changing the saturation by 10% instead.

 D34B85

 D34B85

FFFFFF

 B52D6C

 FF83BA

 980054

 FF9FD6

 7B003D

 FFBCF2

 5F0027

 FFD9FF

 440012

 FFF6FF

 270001

 000000

 D34B85

 D34B85

 D33679

 D36091

 D3216D

 D3759D

 D30C61

 D38AA9

 D3005A

 D39FB5

 D3B5C2

 D3CACE

 D3DFDA

 D3F4E6

 D3FFF2

Harmonies

Analogous

The Analogous color harmony consists of three colors that are next to each other on the color wheel.



B45BB5



D34B85



D55153

Triad

The Triadic color harmony groups three colors that are evenly spaced from another and form a triangle on the color wheel.



D34B85



6A8814



0090D1

Complementary

The Complementary color scheme is a pair of colors which are on the opposite of each other on the color wheel.



D34B85



4BD399

Split Complementary

Split-complementary colors differ from the complementary color scheme. The scheme consists of three colors, the original color and two neighbors of the complement color.



0094A9



D34B85



179043

Square

The Square scheme is like the rectangle color scheme, but the four colors are evenly spaced on the color wheel.



D34B85



9A7900



009476



0085E2

Rectangle

The Rectangle color scheme consists of four colors that form a rectangle on the color wheel.



D34B85



C95D35



009476



0092C5

Sweetspot

The Sweet Spot groups the original color and five complimentary colors.



D34B85



FFCFE3



984BD3



80626F



000000



808080

Same Dimension

The Same Dimension uses a secret algorithm to generate beautiful new colors.



D34B85



FF3B8E



D3544B



695E63



A80048



290011

Inverse Universe

The Inverse Universe completely reimagines the original color for something new.



D34B85



FF3B8E



4BCAD3



695E63



A80048



290011

Previews

White Background



This preview shows how the Hex color D34B85 looks on a white background.

Color Contrast Check

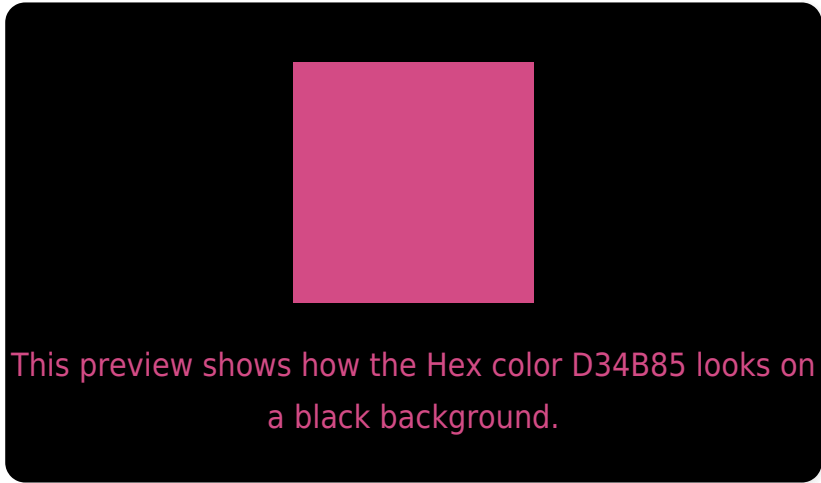
Large Text (above 18pt) WCAG AA ✓ Pass

Any Text WCAG AA × Fail

Large Text (above 18pt) WCAG AAA × Fail

Any Text WCAG AAA × Fail

Black Background



Color Contrast Check

Large Text (above 18pt) WCAG AA ✓ Pass

Any Text WCAG AA ✓ Pass

Large Text (above 18pt) WCAG AAA ✓ Pass

Any Text WCAG AAA × Fail

If you want to check with other color combinations, try the [Color Contrast Checker](#).

Hex D34B85 Background



This preview shows how black text looks on a background with the Hex color D34B85.

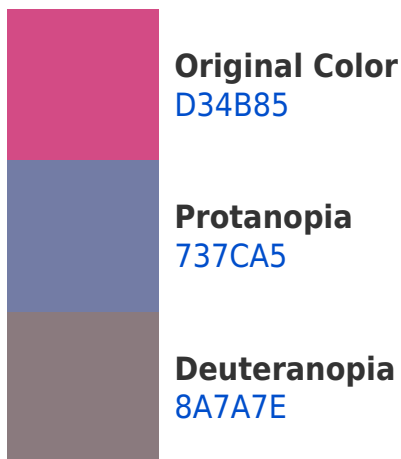


This preview shows how white text looks on a background with the Hex color D34B85.

Color Blindness Simulation

Color vision deficiency is a very complex topic, and I could not describe the different causes any better than Wikipedia does, so if you want to learn more, you should check out their [article about color blindness](#).

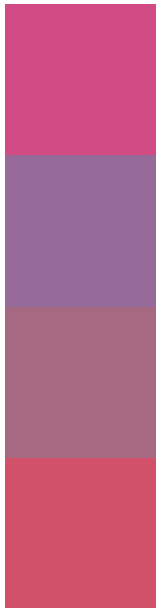
Dichromacy





Tritanopia
D0555A

Trichromacy



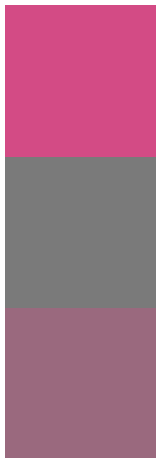
Original Color
D34B85

Protanomaly
966A99

Deuteranomaly
A56981

Tritanomaly
D1516A

Monochromacy



Original Color
D34B85

Achromatopsia
7A7A7A

Achromatomaly
9A697E

CSS Examples

Text

The CSS property to change the color of the text to Hex D34B85 is called "color". The color property can be set on classes, ids or directly on the HTML element.

This example shows how text in the color #D34B85 looks like.

```
.text, #text, p{  
  color:#D34B85  
}
```

If you want to add a text shadow in that color use the text-shadow property, you can generate a text shadow directly with our [CSS Text Shadow Generator](#).

Here you see how black text with a 4 pixel #D34B85 colored shadow looks like.

```
.shadow{ text-shadow: 4px 4px 2px #D34B85
}
```

Border

The CSS property to change the border of an element to Hex D34B85 is called "border". The border property can be set on classes, ids or directly on the HTML element.

This example shows the color as border, it can be applied via the CSS property "border" or "border-color".

```
.border, #border, table{ border:4px solid
#D34B85 }
```

If only the border color should be changed use the property `border-color`.

```
.border{ border-color:#D34B85 }
```

If you want to add a box shadow in that color use:

Here you see how a box with a 4 pixel #D34B85 colored shadow looks like.

```
.boxshadow{ -moz-box-shadow:4px 4px 4px  
4px #D34B85; -webkit-box-shadow:4px 4px  
4px 4px #D34B85; box-shadow:4px 4px 4px  
4px #D34B85 }
```

Background

The CSS property to change the background color of an element to Hex D34B85 is called "background". The background property can be set on classes, ids or directly on the HTML element.

```
.background, #background, body{  
background:#D34B85 }
```

If only the background color should be changed can be used:

```
.background{ background-color:#D34B85 }
```

This example shows the color as background, it is applied via the CSS property "background".

To optimize and compress your CSS code, you can use our [online CSS compressor and optimizer](#) based on csstidy. If you want to create a linear or radial gradient as background or border, check our [CSS Gradient Generator](#).

Hey! You found this booklet interesting? Support Converting Colors with the new Membership Option!

The pro membership hides all ads, plus gives you double the colors in the color bucket, and more awesome pro features!

[Learn more, Memberships starting at \\$2.50/m!](#)

**Follow me
on Twitter!**

@ConvertingColor