

# Converting Colors

Hex(D35873)

Have a look what the booklet for  
Hex(D35873) contains.

<b>Hex(D35873)</b> .....	3
<b><i>Conversions</i></b> .....	4
<b><i>Details</i></b> .....	6
<b><i>Harmonies</i></b> .....	11
<b><i>Previews</i></b> .....	23
<b><i>Color Blindness Simulation</i></b> .....	26
<b><i>CSS Examples</i></b> .....	29

# Color

**Hex(D35873)**

# Conversions

## Conversions Part 1

<b>Format</b>	<b>Color</b>
Hex	D35873
RGB	211, 88, 115
RGB Percent	83%, 35%, 45%
CMY	0.1725, 0.6549, 0.5490
CMYK	0.00, 0.58, 0.45, 0.17
HSL	347°, 58%, 59%
HSV	347°, 58%, 83%
XYZ	33.4482, 22.0661, 18.7159
YIQ	127.8550, 64.6410, 34.4730

# Conversions

## Conversions Part 2

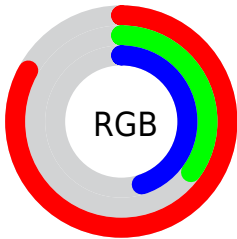
<b>Format</b>	<b>Color</b>
<b>R<sub>YB</sub></b>	211, 88, 115
Decimal	13850739
CIE <sub>Lab</sub>	54.10, 50.86, 9.65
CIE <sub>LCh</sub>	54, 51.771, 10.748
Yxy	22.0661, 0.4506, 0.2973
Android (android.graphics.Color)	4292040819 (0xFFD35873)
YUV	127.8550, -6.3375, 72.9182
Hunter-Lab	46.9746, 44.8951, 9.2595

# Details

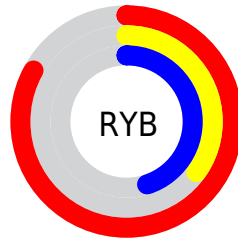
The Hex color **D35873** is a dark color, and the websafe version is hex **CC3366**. The color can be described as middle muted rose. A complement of this color would be **58D3B8**, and the grayscale version is **808080**.

A 20% lighter version of the original color is **FF8EA7**, and **981F43** is the 20% darker color. If you saturate the color by 10%, you get **D34363**, and if you desaturate by 10%, it is **D36D83**.

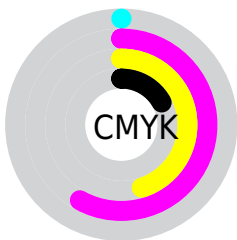
# Distribution



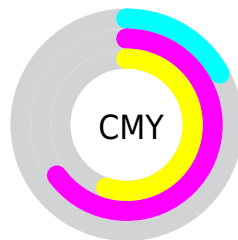
- Red (83%)
- Green (35%)
- Blue (45%)



- Red (83%)
- Yellow (35%)
- Blue (45%)



- Cyan (0%)
- Magenta (58%)
- Yellow (45%)
- Black (17%)



- Cyan (17%)
- Magenta (65%)
- Yellow (55%)

# Brightness & Saturation Gradients

These gradients show how the Hex color D35873 changes by changing the brightness by 10 percent. The first figure shows a shift by +10% for each color and the second figure -10%.

Similar to the brightness gradients but the following saturation gradients show a change of the Hex color D35873 by changing the saturation by 10% instead.



 D35873

 D35873

FFFFFF

 B53D5B

 FF8EA7

 981F43

 FFAAC2

 7B002D

 FFC7DE

 5E0019

 FFE3FA

 440001

 270001

 000000

 D35873

 D35873

 D34363

 D36D83

 D32E52

 D38294

 D31942

 D397A4

 D30431

 D3ACB5

 D3002E

 D3C2C5

 D3D7D6

 D3ECE6

 D3FFF7

 D3FFFF

# Harmonies

## Analogous

The Analogous color harmony consists of three colors that are next to each other on the color wheel.



C35DA0



D35873



CB6349

# Triad

The Triadic color harmony groups three colors that are evenly spaced from another and form a triangle on the color wheel.



D35873



598F39



008ED5

# Complementary

The Complementary color scheme is a pair of colors which are on the opposite of each other on the color wheel.



D35873



58D3B8

# Split Complementary

Split-complementary colors differ from the complementary color scheme. The scheme consists of three colors, the original color and two neighbors of the complement color.



0095BB



D35873



009562

# Square

The Square scheme is like the rectangle color scheme, but the four colors are evenly spaced on the color wheel.



D35873



8A8421



009791



4881D9

# Rectangle

The Rectangle color scheme consists of four colors that form a rectangle on the color wheel.



D35873



BB6F32



009791



0091CF



# Sweetspot

The Sweet Spot groups the original color and five complimentary colors.



D35873



FFD4DD



B658D3



80666C



000000



808080



# Same Dimension

The Same Dimension uses a secret algorithm to generate beautiful new colors.



D35873



FF4D74



D37958



695E60



A80025



290009



# Inverse Universe

The Inverse Universe completely reimagines the original color for something new.



D35873



FF4D74



58B2D3



695E60



A80025



290009



# Previews

## White Background



This preview shows how the Hex color D35873 looks on a white background.

## Color Contrast Check

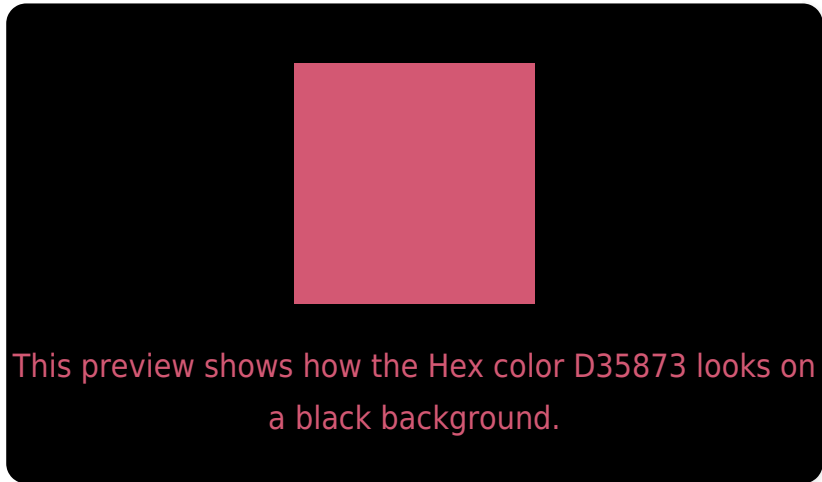
Large Text (above 18pt) WCAG AA ✓ Pass

Any Text WCAG AA ✗ Fail

Large Text (above 18pt) WCAG AAA ✗ Fail

Any Text WCAG AAA ✗ Fail

# Black Background



## Color Contrast Check

Large Text (above 18pt) WCAG AA ✓ Pass

Any Text WCAG AA ✓ Pass

Large Text (above 18pt) WCAG AAA ✓ Pass

Any Text WCAG AAA × Fail

If you want to check with other color combinations, try the [Color Contrast Checker](#).



## Hex D35873 Background



This preview shows how black text looks on a background with the Hex color D35873.




This preview shows how white text looks on a background with the Hex color D35873.

# Color Blindness Simulation

Color vision deficiency is a very complex topic, and I could not describe the different causes any better than Wikipedia does, so if you want to learn more, you should check out their [article about color blindness](#).

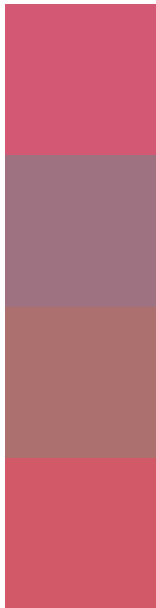
## Dichromacy





**Tritanopia**  
D25B61

# Trichromacy



**Original Color**  
D35873

**Protanomaly**  
9F7281

**Deuteranomaly**  
AC706F

**Tritanomaly**  
D25A68

# Monochromacy



**Original Color**  
D35873

**Achromatopsia**  
808080

**Achromatomaly**  
9E717B

# CSS Examples

## Text

The CSS property to change the color of the text to Hex D35873 is called "color". The color property can be set on classes, ids or directly on the HTML element.

This example shows how text in the color #D35873 looks like.

```
.text, #text, p{  
    color:#D35873  
}
```

If you want to add a text shadow in that color use the text-shadow property, you can generate a text shadow directly with our [CSS Text Shadow Generator](#).

Here you see how black text with a 4 pixel #D35873 colored shadow looks like.

```
.shadow{ text-shadow: 4px 4px 2px #D35873
}
```

## Border

The CSS property to change the border of an element to Hex D35873 is called "border". The border property can be set on classes, ids or directly on the HTML element.

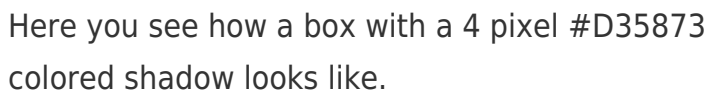
This example shows the color as border, it can be applied via the CSS property "border" or "border-color".

```
.border, #border, table{ border:4px solid
#D35873 }
```

If only the border color should be changed use the property `border-color`.

```
.border{ border-color:#D35873 }
```

If you want to add a box shadow in that color use:



Here you see how a box with a 4 pixel #D35873 colored shadow looks like.

```
.boxshadow{ -moz-box-shadow:4px 4px 4px  
4px #D35873; -webkit-box-shadow:4px 4px  
4px 4px #D35873; box-shadow:4px 4px 4px  
4px #D35873 }
```

# Background

The CSS property to change the background color of an element to Hex D35873 is called "background". The background property can be set on classes, ids or directly on the HTML element.

```
.background, #background, body{  
background:#D35873 }
```

If only the background color should be changed can be used:

```
.background{ background-color:#D35873 }
```

This example shows the color as background, it is applied via the CSS property "background".

To optimize and compress your CSS code, you can use our [online CSS compressor and optimizer](#) based on csstidy. If you want to create a linear or radial gradient as background or border, check our [CSS Gradient Generator](#).



Hey! You found this booklet interesting? Support Converting Colors with the new Membership Option!

The pro membership hides all ads, plus gives you double the colors in the color bucket, and more awesome pro features!

**[Learn more, Memberships starting at \\$2.50/m!](#)**

**Follow me  
on Twitter!**

@ConvertingColor