

Converting Colors

Hex(D37FE5)

Have a look what the booklet for
Hex(D37FE5) contains.

Hex(D37FE5)	3
<i>Conversions</i>	4
<i>Details</i>	6
<i>Harmonies</i>	11
<i>Previews</i>	23
<i>Color Blindness Simulation</i>	26
<i>CSS Examples</i>	29

Color

Hex(D37FE5)

Conversions

Conversions Part 1

Format	Color
Hex	D37FE5
RGB	211, 127, 229
RGB Percent	83%, 50%, 90%
CMY	0.1725, 0.5020, 0.1020
CMYK	0.08, 0.45, 0.00, 0.10
HSL	289°, 66%, 70%
HSV	289°, 45%, 90%
XYZ	48.5962, 34.6848, 78.2623
YIQ	163.7440, 17.3220, 49.5300

Conversions

Conversions Part 2

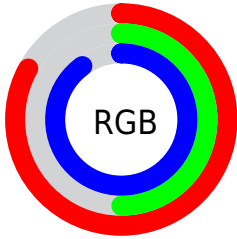
Format	Color
RYB	211, 127, 229
Decimal	13860837
CIELab	65.50, 48.51, -38.63
CIElCh	66, 62.014, 321.467
Yxy	34.6848, 0.3008, 0.2147
Android (android.graphics.Color)	4292050917 (0xFFD37FE5)
YUV	163.7440, 32.1712, 41.4435
Hunter-Lab	58.8938, 44.2252, -37.5632

Details

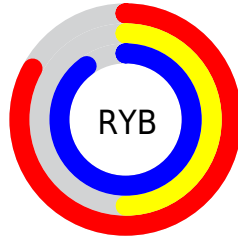
The Hex color **D37FE5** is a light color, and the websafe version is hex **CC66CC**. A complement of this color would be **91E57F**, and the grayscale version is **A3A3A3**.

A 20% lighter version of the original color is **FFB6FF**, and **9A4BAD** is the 20% darker color. If you saturate the color by 10%, you get **CF68E5**, and if you desaturate by 10%, it is **D796E5**.

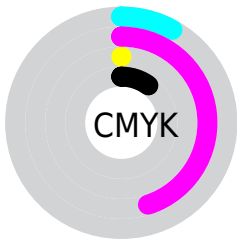
Distribution



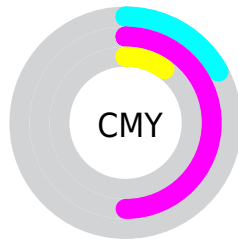
- Red (83%)
- Green (50%)
- Blue (90%)



- Red (83%)
- Yellow (50%)
- Blue (90%)



- Cyan (8%)
- Magenta (45%)
- Yellow (0%)
- Black (10%)



- Cyan (17%)
- Magenta (50%)
- Yellow (10%)

Brightness & Saturation Gradients

These gradients show how the Hex color D37FE5 changes by changing the brightness by 10 percent. The first figure shows a shift by +10% for each color and the second figure -10%.

Similar to the brightness gradients but the following saturation gradients show a change of the Hex color D37FE5 by changing the saturation by 10% instead.

 D37FE5

 D37FE5

FFFFFF

 B665C9

 FFB6FF

 9A4BAD

 FFD2FF

 7F3092

 FFEFFF

 641478

 4A005F

 310047

 190030

 00011A

 000000

 D37FE5

 D37FE5

 CF68E5

 D796E5

 CB51E5

 DBADE5

 C73AE5

 DFC4E5

 C323E5

 E3DBE5

 BF0CE5

 E7F2E5

 BD00E5

 EBFFE5

 EFFE5

 F3FFE5

 F7FFE5

Harmonies

Analogous

The Analogous color harmony consists of three colors that are next to each other on the color wheel.



8397FF



D37FE5



FC6DB1

Triad

The Triadic color harmony groups three colors that are evenly spaced from another and form a triangle on the color wheel.



D37FE5



CA9727



00BAC6

Complementary

The Complementary color scheme is a pair of colors which are on the opposite of each other on the color wheel.



D37FE5



91E57F

Split Complementary

Split-complementary colors differ from the complementary color scheme. The scheme consists of three colors, the original color and two neighbors of the complement color.



00B98D



D37FE5



95A82D

Square

The Square scheme is like the rectangle color scheme, but the four colors are evenly spaced on the color wheel.



D37FE5



F08149



4FB356



00B5F5

Rectangle

The Rectangle color scheme consists of four colors that form a rectangle on the color wheel.



D37FE5



FF6B8C



4FB356



00BAB3

Sweetspot

The Sweet Spot groups the original color and five complimentary colors.



D37FE5



F9DEFF



7F92E5



7C6B80



000000



808080

Same Dimension

The Same Dimension uses a secret algorithm to generate beautiful new colors.



D37FE5



E778FF



E57FC5



716773



9300B3



2A0033

Inverse Universe

The Inverse Universe completely reimagines the original color for something new.



E57F91



FF7890



7FE59F



736769



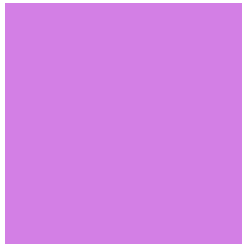
B30020



330009

Previews

White Background



This preview shows how the Hex color D37FE5 looks on a white background.

Color Contrast Check

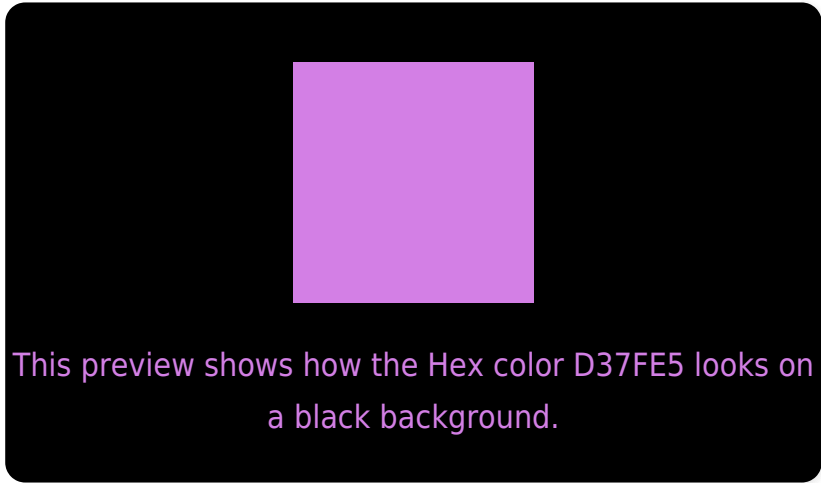
Large Text (above 18pt) WCAG AA × Fail

Any Text WCAG AA × Fail

Large Text (above 18pt) WCAG AAA × Fail

Any Text WCAG AAA × Fail

Black Background



Color Contrast Check

Large Text (above 18pt) WCAG AA ✓ Pass

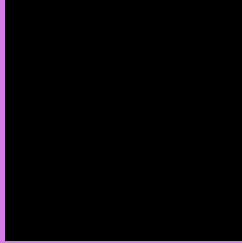
Any Text WCAG AA ✓ Pass

Large Text (above 18pt) WCAG AAA ✓ Pass

Any Text WCAG AAA ✓ Pass

If you want to check with other color combinations, try the [Color Contrast Checker](#).

Hex D37FE5 Background



This preview shows how black text looks on a background with the Hex color D37FE5.

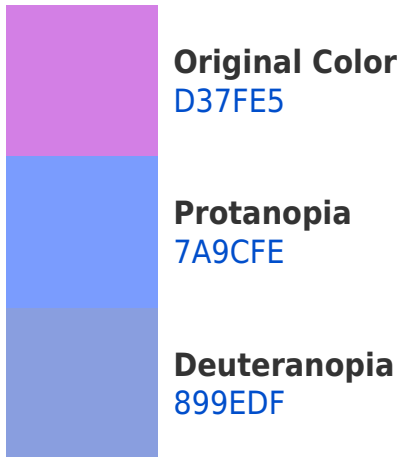


This preview shows how white text looks on a background with the Hex color D37FE5.

Color Blindness Simulation

Color vision deficiency is a very complex topic, and I could not describe the different causes any better than Wikipedia does, so if you want to learn more, you should check out their [article about color blindness](#).

Dichromacy





Tritanopia
C9909B

Trichromacy



Original Color
D37FE5



Protanomaly
9A91F5



Deuteranomaly
A493E1



Tritanomaly
CD8AB6

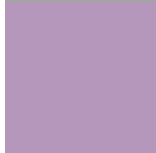
Monochromacy



Original Color
D37FE5



Achromatopsia
A4A4A4



Achromatomaly
B597BC

CSS Examples

Text

The CSS property to change the color of the text to Hex D37FE5 is called "color". The color property can be set on classes, ids or directly on the HTML element.

This example shows how text in the color #D37FE5 looks like.

```
.text, #text, p{  
    color:#D37FE5  
}
```

If you want to add a text shadow in that color use the text-shadow property, you can generate a text shadow directly with our [CSS Text Shadow Generator](#).

Here you see how black text with a 4 pixel #D37FE5 colored shadow looks like.

```
.shadow{ text-shadow: 4px 4px 2px #D37FE5  
}
```

Border

The CSS property to change the border of an element to Hex D37FE5 is called "border". The border property can be set on classes, ids or directly on the HTML element.

This example shows the color as border, it can be applied via the CSS property "border" or "border-color".

```
.border, #border, table{ border:4px solid  
#D37FE5 }
```

If only the border color should be changed use the property `border-color`.

```
.border{ border-color:#D37FE5 }
```

If you want to add a box shadow in that color use:

Here you see how a box with a 4 pixel #D37FE5 colored shadow looks like.

```
.boxshadow{ -moz-box-shadow:4px 4px 4px  
4px #D37FE5; -webkit-box-shadow:4px 4px  
4px 4px #D37FE5; box-shadow:4px 4px 4px  
4px #D37FE5 }
```

Background

The CSS property to change the background color of an element to Hex D37FE5 is called "background". The background property can be set on classes, ids or directly on the HTML element.

```
.background, #background, body{  
background:#D37FE5 }
```

If only the background color should be changed can be used:

```
.background{ background-color:#D37FE5 }
```

This example shows the color as background, it is applied via the CSS property "background".

To optimize and compress your CSS code, you can use our [online CSS compressor and optimizer](#) based on csstidy. If you want to create a linear or radial gradient as background or border, check our [CSS Gradient Generator](#).

Hey! You found this booklet interesting? Support Converting Colors with the new Membership Option!

The pro membership hides all ads, plus gives you double the colors in the color bucket, and more awesome pro features!

[Learn more, Memberships starting at \\$2.50/m!](#)

**Follow me
on Twitter!**

@ConvertingColor