

Converting Colors

Hex(D38D9D)

Have a look what the booklet for
Hex(D38D9D) contains.

Hex(D38D9D)	3
<i>Conversions</i>	4
<i>Details</i>	6
<i>Harmonies</i>	11
<i>Previews</i>	23
<i>Color Blindness Simulation</i>	26
<i>CSS Examples</i>	29

Color

Hex(D38D9D)

Conversions

Conversions Part 1

Format	Color
Hex	D38D9D
RGB	211, 141, 157
RGB Percent	83%, 55%, 62%
CMY	0.1725, 0.4471, 0.3843
CMYK	0.00, 0.33, 0.26, 0.17
HSL	346°, 44%, 69%
HSV	346°, 33%, 83%
XYZ	42.4746, 35.3330, 36.4796
YIQ	163.7540, 36.5840, 19.8160

Conversions

Conversions Part 2

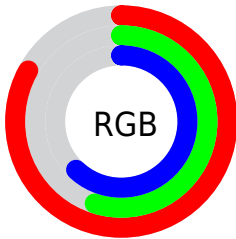
Format	Color
R _Y B	211, 141, 157
Decimal	13864349
CIE Lab	66.01, 28.79, 2.48
CIE LCh	66, 28.895, 4.931
Yxy	35.3330, 0.3716, 0.3092
Android (android.graphics.Color)	4292054429 (0xFFD38D9D)
YUV	163.7540, -3.3297, 41.4347
Hunter-Lab	59.4415, 23.5266, 5.2225

Details

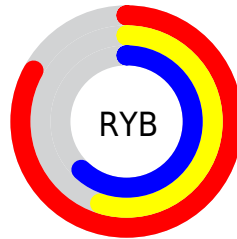
The Hex color **D38D9D** is a light color, and the websafe version is hex **CC9999**. A complement of this color would be **8DD3C3**, and the grayscale version is **A4A4A4**.

A 20% lighter version of the original color is **FFC3D3**, and **9B5A6A** is the 20% darker color. If you saturate the color by 10%, you get **D3788D**, and if you desaturate by 10%, it is **D3A2AD**.

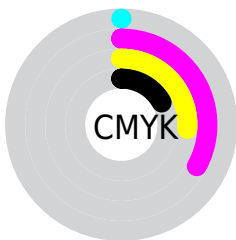
Distribution



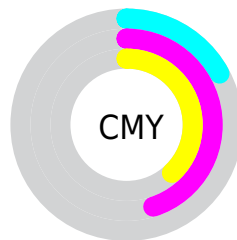
- Red (83%)
- Green (55%)
- Blue (62%)



- Red (83%)
- Yellow (55%)
- Blue (62%)



- Cyan (0%)
- Magenta (33%)
- Yellow (26%)
- Black (17%)



- Cyan (17%)
- Magenta (45%)
- Yellow (38%)

Brightness & Saturation Gradients

These gradients show how the Hex color D38D9D changes by changing the brightness by 10 percent. The first figure shows a shift by +10% for each color and the second figure -10%.

Similar to the brightness gradients but the following saturation gradients show a change of the Hex color D38D9D by changing the saturation by 10% instead.

 D38D9D

 D38D9D

FFFFFF

 B77383

 FFC3D3

 9B5A6A

 FFDFF0

 804152

 FFFCFF

 662A3B

 4C1225

 330010

 180001

 000000

 D38D9D

 D38D9D

 D3788D

 D3A2AD

 D3637C

 D3B7BE

 D34E6C

 D3CCCE

 D3395C

 D3E1DE

 D3244C

 D3F7EE

 D30E3B

 D3FFFF

 D30030

Harmonies

Analogous

The Analogous color harmony consists of three colors that are next to each other on the color wheel.



C590B7



D38D9D



D29084

Triad

The Triadic color harmony groups three colors that are evenly spaced from another and form a triangle on the color wheel.



D38D9D



92A875



60A9CF

Complementary

The Complementary color scheme is a pair of colors which are on the opposite of each other on the color wheel.



D38D9D



8DD3C3

Split Complementary

Split-complementary colors differ from the complementary color scheme. The scheme consists of three colors, the original color and two neighbors of the complement color.



4DAEBD



D38D9D



74AD8A

Square

The Square scheme is like the rectangle color scheme, but the four colors are evenly spaced on the color wheel.



D38D9D



AEA06D



58AFA4



85A1D4

Rectangle

The Rectangle color scheme consists of four colors that form a rectangle on the color wheel.



D38D9D



CB9577



58AFA4



56ABCA

Sweetspot

The Sweet Spot groups the original color and five complimentary colors.



D38D9D



FFE6EB



C38DD3



807074



000000



808080

Same Dimension

The Same Dimension uses a secret algorithm to generate beautiful new colors.



D38D9D



FF99B0



D3A08D



695E60



A80026



290009

Inverse Universe

The Inverse Universe completely reimagines the original color for something new.



D38D9D



FF99B0



8DC0D3



695E60



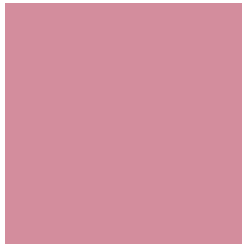
A80026



290009

Previews

White Background



This preview shows how the Hex color D38D9D looks on a white background.

Color Contrast Check

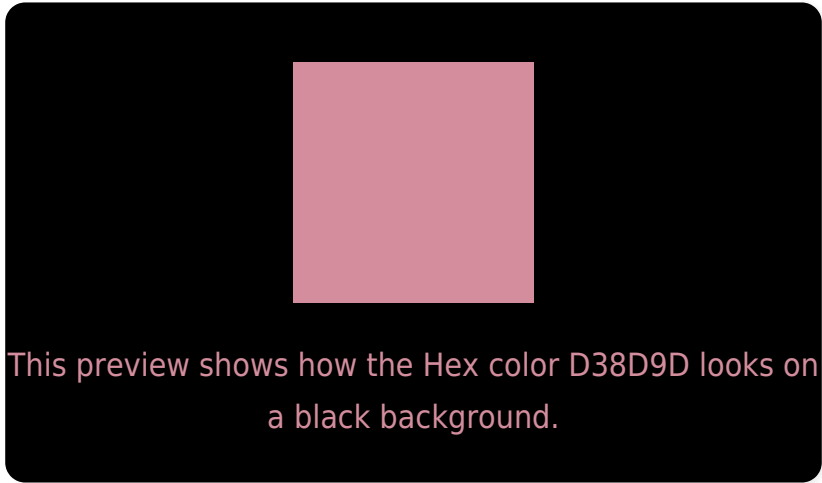
Large Text (above 18pt) WCAG AA × Fail

Any Text WCAG AA × Fail

Large Text (above 18pt) WCAG AAA × Fail

Any Text WCAG AAA × Fail

Black Background



Color Contrast Check

Large Text (above 18pt) WCAG AA ✓ Pass

Any Text WCAG AA ✓ Pass

Large Text (above 18pt) WCAG AAA ✓ Pass

Any Text WCAG AAA ✓ Pass

If you want to check with other color combinations, try the [Color Contrast Checker](#).

Hex D38D9D Background



This preview shows how black text looks on a background with the Hex color D38D9D.



This preview shows how white text looks on a background with the Hex color D38D9D.

Color Blindness Simulation

Color vision deficiency is a very complex topic, and I could not describe the different causes any better than Wikipedia does, so if you want to learn more, you should check out their [article about color blindness](#).

Dichromacy



Original Color
D38D9D

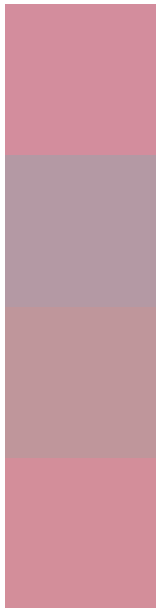
Protanopia
A2A0A8

Deuteranopia
B39B9A



Tritanopia
D38E98

Trichromacy



Original Color
D38D9D

Protanomaly
B499A4

Deuteranomaly
BF969B

Tritanomaly
D38E9A

Monochromacy



Original Color
D38D9D

Achromatopsia
A4A4A4

Achromatomaly
B59CA1

CSS Examples

Text

The CSS property to change the color of the text to Hex D38D9D is called "color". The color property can be set on classes, ids or directly on the HTML element.

This example shows how text in the color #D38D9D looks like.

```
.text, #text, p{  
  color:#D38D9D  
}
```

If you want to add a text shadow in that color use the text-shadow property, you can generate a text shadow directly with our [CSS Text Shadow Generator](#).

Here you see how black text with a 4 pixel #D38D9D colored shadow looks like.

```
.shadow{ text-shadow: 4px 4px 2px #D38D9D
}
```

Border

The CSS property to change the border of an element to Hex D38D9D is called "border". The border property can be set on classes, ids or directly on the HTML element.

This example shows the color as border, it can be applied via the CSS property "border" or "border-color".

```
.border, #border, table{ border:4px solid
#D38D9D }
```

If only the border color should be changed use the property `border-color`.

```
.border{ border-color:#D38D9D }
```

If you want to add a box shadow in that color use:

Here you see how a box with a 4 pixel #D38D9D colored shadow looks like.

```
.boxshadow{ -moz-box-shadow:4px 4px 4px  
4px #D38D9D; -webkit-box-shadow:4px 4px  
4px 4px #D38D9D; box-shadow:4px 4px 4px  
4px #D38D9D }
```

Background

The CSS property to change the background color of an element to Hex D38D9D is called "background". The background property can be set on classes, ids or directly on the HTML element.

```
.background, #background, body{  
background:#D38D9D }
```

If only the background color should be changed can be used:

```
.background{ background-color:#D38D9D }
```

This example shows the color as background, it is applied via the CSS property "background".

To optimize and compress your CSS code, you can use our [online CSS compressor and optimizer](#) based on csstidy. If you want to create a linear or radial gradient as background or border, check our [CSS Gradient Generator](#).

Hey! You found this booklet interesting? Support Converting Colors with the new Membership Option!

The pro membership hides all ads, plus gives you double the colors in the color bucket, and more awesome pro features!

[Learn more, Memberships starting at \\$2.50/m!](#)

**Follow me
on Twitter!**

@ConvertingColor