

# Converting Colors

Hex(D39661)

Have a look what the booklet for  
Hex(D39661) contains.

<b>Hex(D39661)</b> .....	3
<i><b>Conversions</b></i> .....	4
<i><b>Details</b></i> .....	6
<i><b>Harmonies</b></i> .....	11
<i><b>Previews</b></i> .....	23
<i><b>Color Blindness Simulation</b></i> .....	26
<i><b>CSS Examples</b></i> .....	29

# **Color**

**Hex(D39661)**

# Conversions

## Conversions Part 1

<b>Format</b>	<b>Color</b>
Hex	D39661
RGB	211, 150, 97
RGB Percent	83%, 59%, 38%
CMY	0.1725, 0.4118, 0.6196
CMYK	0.00, 0.29, 0.54, 0.17
HSL	28°, 56%, 60%
HSV	28°, 54%, 83%
XYZ	39.9280, 36.5246, 16.2548
YIQ	162.1970, 53.3690, -3.5510

# Conversions

## Conversions Part 2

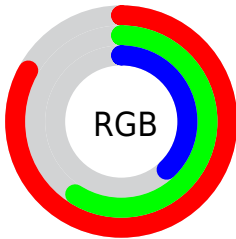
Format	Color
<a href="#">RYB</a>	<a href="#">211, 196, 97</a>
Decimal	<a href="#">13866593</a>
<a href="#">CIELab</a>	<a href="#">66.92, 17.06, 36.87</a>
<a href="#">CIElCh</a>	<a href="#">67, 40.623, 65.167</a>
<a href="#">Yxy</a>	<a href="#">36.5246, 0.4307, 0.3940</a>
<a href="#">Android (android.graphics.Color)</a>	<a href="#">4292056673 (0xFFD39661)</a>
<a href="#">YUV</a>	<a href="#">162.1970, -32.1421, 42.8002</a>
<a href="#">Hunter-Lab</a>	<a href="#">60.4356, 12.1672, 26.3583</a>

# Details

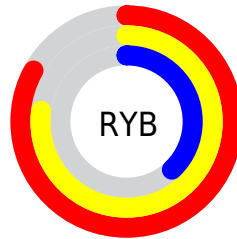
The Hex color **D39661** is a light color, and the websafe version is hex **CC9966**. A complement of this color would be **619ED3**, and the grayscale version is **A2A2A2**.

A 20% lighter version of the original color is **FFCC95**, and **996331** is the 20% darker color. If you saturate the color by 10%, you get **D38B4C**, and if you desaturate by 10%, it is **D3A176**.

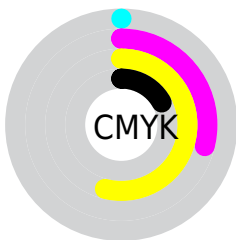
# Distribution



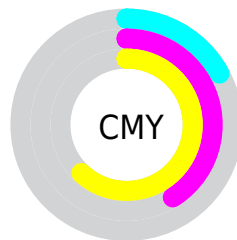
- Red (83%)
- Green (59%)
- Blue (38%)



- Red (83%)
- Yellow (77%)
- Blue (38%)



- Cyan (0%)
- Magenta (29%)
- Yellow (54%)
- Black (17%)



- Cyan (17%)
- Magenta (41%)
- Yellow (62%)

# Brightness & Saturation Gradients

These gradients show how the Hex color D39661 changes by changing the brightness by 10 percent. The first figure shows a shift by +10% for each color and the second figure -10%.

Similar to the brightness gradients but the following saturation gradients show a change of the Hex color D39661 by changing the saturation by 10% instead.



 D39661

 D39661

FFFFFF

 B67C48

 FFCC95

 996331

 FFE8B0

 7D4B19

 FFFFCB

 623401

 FFFF E8

 471E00

 2D0A00

 0A0000

 000000

 D39661

 D39661

 D38B4C

 D3A176

 D37F37

 D3AD8B

 D37422

 D3B8A0

 D3690D

 D3C3B5

 D36200

 D3CECB

 D3DAE0

 D3E5F5

 D3F0FF

 D3FCFF

# Harmonies

## Analogous

The Analogous color harmony consists of three colors that are next to each other on the color wheel.



E68A7B



D39661



B4A359

# Triad

The Triadic color harmony groups three colors that are evenly spaced from another and form a triangle on the color wheel.



D39661



18B6A8



AF97DF

# Complementary

The Complementary color scheme is a pair of colors which are on the opposite of each other on the color wheel.



D39661



619ED3

# Split Complementary

Split-complementary colors differ from the complementary color scheme. The scheme consists of three colors, the original color and two neighbors of the complement color.



76A4EB



D39661



00B5CC

# Square

The Square scheme is like the rectangle color scheme, but the four colors are evenly spaced on the color wheel.



D39661



5FB483



21AFE4



D68BC2

# Rectangle

The Rectangle color scheme consists of four colors that form a rectangle on the color wheel.



D39661



9BAA5F



21AFE4



9E9CE5



# Sweetspot

The Sweet Spot groups the original color and five complimentary colors.



D39661



FFE9D6



D361A0



807367



000000



808080



# Same Dimension

The Same Dimension uses a secret algorithm to generate beautiful new colors.



D39661



FFA659



D3CD61



69635E



A84E00



291300



# Inverse Universe

The Inverse Universe completely reimagines the original color for something new.



619ED3



59B2FF



6167D3



5E6469



005AA8

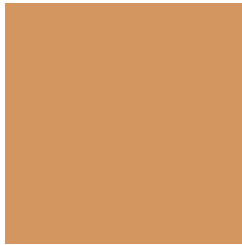


001629



# Previews

## White Background



This preview shows how the Hex color D39661 looks on a white background.

## Color Contrast Check

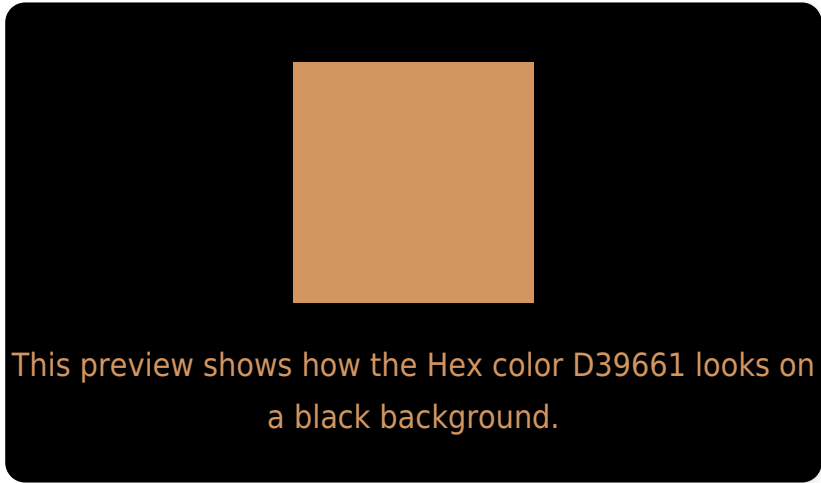
Large Text (above 18pt) WCAG AA × Fail

Any Text WCAG AA × Fail

Large Text (above 18pt) WCAG AAA × Fail

Any Text WCAG AAA × Fail

# Black Background



## Color Contrast Check

Large Text (above 18pt) WCAG AA ✓ Pass

Any Text WCAG AA ✓ Pass

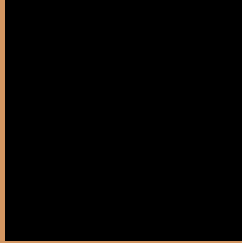
Large Text (above 18pt) WCAG AAA ✓ Pass

Any Text WCAG AAA ✓ Pass

If you want to check with other color combinations, try the [Color Contrast Checker](#).



## Hex D39661 Background



This preview shows how black text looks on a background with the Hex color D39661.



This preview shows how white text looks on a background with the Hex color D39661.

# Color Blindness Simulation

Color vision deficiency is a very complex topic, and I could not describe the different causes any better than Wikipedia does, so if you want to learn more, you should check out their [article about color blindness](#).

## Dichromacy



**Original Color**  
D39661

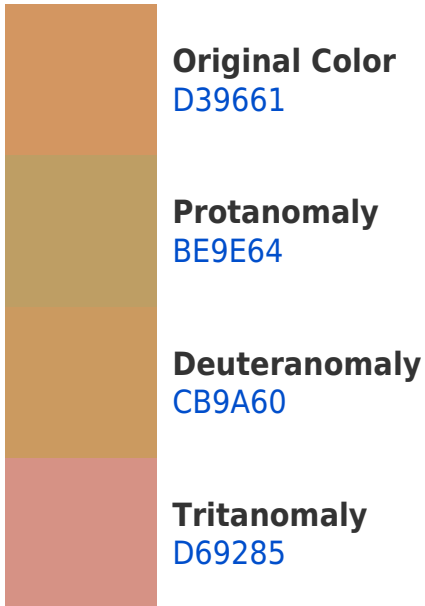
**Protanopia**  
B2A366

**Deuteranopia**  
C69C60



**Tritanopia**  
D88F9A

# Trichromacy



# Monochromacy



# CSS Examples

## Text

The CSS property to change the color of the text to Hex D39661 is called "color". The color property can be set on classes, ids or directly on the HTML element.

This example shows how text in the color #D39661 looks like.

```
.text, #text, p{  
    color:#D39661  
}
```

If you want to add a text shadow in that color use the text-shadow property, you can generate a text shadow directly with our [CSS Text Shadow Generator](#).

Here you see how black text with a 4 pixel #D39661 colored shadow looks like.

```
.shadow{ text-shadow: 4px 4px 2px #D39661
}
```

## Border

The CSS property to change the border of an element to Hex D39661 is called "border". The border property can be set on classes, ids or directly on the HTML element.

This example shows the color as border, it can be applied via the CSS property "border" or "border-color".

```
.border, #border, table{ border:4px solid
#D39661 }
```

If only the border color should be changed use the property `border-color`.

```
.border{ border-color:#D39661 }
```

If you want to add a box shadow in that color use:

Here you see how a box with a 4 pixel #D39661 colored shadow looks like.

```
.boxshadow{ -moz-box-shadow:4px 4px 4px  
4px #D39661; -webkit-box-shadow:4px 4px  
4px 4px #D39661; box-shadow:4px 4px 4px  
4px #D39661 }
```

# Background

The CSS property to change the background color of an element to Hex D39661 is called "background". The background property can be set on classes, ids or directly on the HTML element.

```
.background, #background, body{  
background:#D39661 }
```

If only the background color should be changed can be used:

```
.background{ background-color:#D39661 }
```

This example shows the color as background, it is applied via the CSS property "background".

To optimize and compress your CSS code, you can use our [online CSS compressor and optimizer](#) based on csstidy. If you want to create a linear or radial gradient as background or border, check our [CSS Gradient Generator](#).



Hey! You found this booklet interesting? Support Converting Colors with the new Membership Option!

The pro membership hides all ads, plus gives you double the colors in the color bucket, and more awesome pro features!

**[Learn more, Memberships starting at \\$2.50/m!](#)**

**Follow me  
on Twitter!**

@ConvertingColor