

Converting Colors

Hex(D39992)

Have a look what the booklet for
Hex(D39992) contains.

Hex(D39992)	3
<i>Conversions</i>	4
<i>Details</i>	6
<i>Harmonies</i>	11
<i>Previews</i>	23
<i>Color Blindness Simulation</i>	26
<i>CSS Examples</i>	29

Color

Hex(D39992)

Conversions

Conversions Part 1

Format	Color
Hex	D39992
RGB	211, 153, 146
RGB Percent	83%, 60%, 57%
CMY	0.1725, 0.4000, 0.4275
CMYK	0.00, 0.27, 0.31, 0.17
HSL	6°, 42%, 70%
HSV	6°, 31%, 83%
XYZ	43.4435, 38.7067, 32.3755
YIQ	169.5440, 36.8150, 10.1190

Conversions

Conversions Part 2

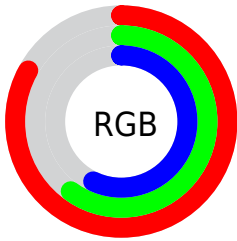
Format	Color
R _Y B	211, 154, 146
Decimal	13867410
CIE Lab	68.54, 20.76, 12.27
CIE LCh	69, 24.115, 30.572
Yxy	38.7067, 0.3793, 0.3380
Android (android.graphics.Color)	4292057490 (0xFFD39992)
YUV	169.5440, -11.6072, 36.3569
Hunter-Lab	62.2147, 15.7680, 12.6967

Details

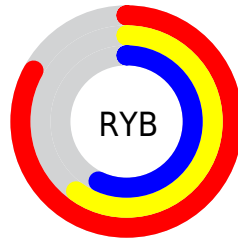
The Hex color **D39992** is a light color, and the websafe version is hex **CC9999**. A complement of this color would be **92CCD3**, and the grayscale version is **AAAAAA**.

A 20% lighter version of the original color is **FFD0C8**, and **9B6660** is the 20% darker color. If you saturate the color by 10%, you get **D3867D**, and if you desaturate by 10%, it is **D3ACA7**.

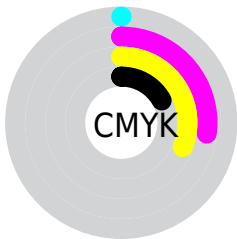
Distribution



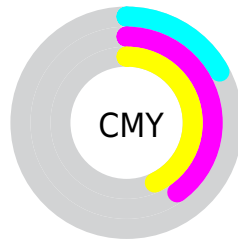
- Red (83%)
- Green (60%)
- Blue (57%)



- Red (83%)
- Yellow (60%)
- Blue (57%)



- Cyan (0%)
- Magenta (27%)
- Yellow (31%)
- Black (17%)



- Cyan (17%)
- Magenta (40%)
- Yellow (43%)

Brightness & Saturation Gradients

These gradients show how the Hex color D39992 changes by changing the brightness by 10 percent. The first figure shows a shift by +10% for each color and the second figure -10%.

Similar to the brightness gradients but the following saturation gradients show a change of the Hex color D39992 by changing the saturation by 10% instead.

 D39992

 D39992

FFFFFF

 B77F78

 FFD0C8

 9B6660

 FFECE4

 804D48

 663631

 4C201C

 340A02

 1C0001

 000000

 D39992

 D39992

 D3867D

 D3ACA7

 D37368

 D3BFBC

 D36153

 D3D1D1

 D34E3E

 D3E4E6

 D33B28

 D3F7FB

 D32813

 D3FFFF

 D31700

Harmonies

Analogous

The Analogous color harmony consists of three colors that are next to each other on the color wheel.



D197A8



D39992



C99F82

Triad

The Triadic color harmony groups three colors that are evenly spaced from another and form a triangle on the color wheel.



D39992



86B191



8DA9D2

Complementary

The Complementary color scheme is a pair of colors which are on the opposite of each other on the color wheel.



D39992



92CCD3

Split Complementary

Split-complementary colors differ from the complementary color scheme. The scheme consists of three colors, the original color and two neighbors of the complement color.



73AFCC



D39992



71B3A7

Square

The Square scheme is like the rectangle color scheme, but the four colors are evenly spaced on the color wheel.



D39992



9FAD81



67B3BD



ABA1CD

Rectangle

The Rectangle color scheme consists of four colors that form a rectangle on the color wheel.



D39992



BEA37C



67B3BD



83ABD2

Sweetspot

The Sweet Spot groups the original color and five complimentary colors.



D39992



FFEBE8



D392CD



807371



000000



808080

Same Dimension

The Same Dimension uses a secret algorithm to generate beautiful new colors.



D39992



FFABA1



D3B992



695F5E



A81200



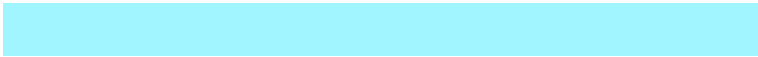
290400

Inverse Universe

The Inverse Universe completely reimagines the original color for something new.



92CCD3



A1F5FF



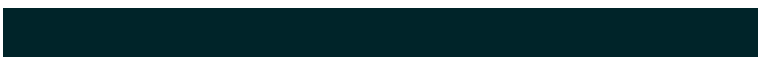
92ACD3



5E6769



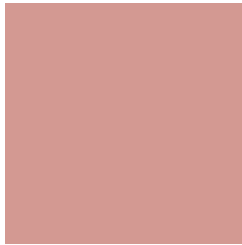
0096A8



002429

Previews

White Background



This preview shows how the Hex color D39992 looks on a white background.

Color Contrast Check

Large Text (above 18pt) WCAG AA × Fail

Any Text WCAG AA × Fail

Large Text (above 18pt) WCAG AAA × Fail

Any Text WCAG AAA × Fail

Black Background



This preview shows how the Hex color D39992 looks on a black background.

Color Contrast Check

Large Text (above 18pt) WCAG AA ✓ Pass

Any Text WCAG AA ✓ Pass

Large Text (above 18pt) WCAG AAA ✓ Pass

Any Text WCAG AAA ✓ Pass

If you want to check with other color combinations, try the [Color Contrast Checker](#).

Hex D39992 Background



This preview shows how black text looks on a background with the Hex color D39992.

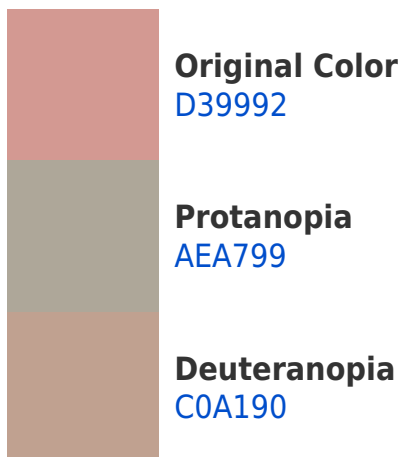


This preview shows how white text looks on a background with the Hex color D39992.

Color Blindness Simulation

Color vision deficiency is a very complex topic, and I could not describe the different causes any better than Wikipedia does, so if you want to learn more, you should check out their [article about color blindness](#).

Dichromacy





Tritanopia
D597A2

Trichromacy



Original Color
D39992

Protanomaly
BBA296

Deuteranomaly
C79E91

Tritanomaly
D4989C

Monochromacy



Original Color
D39992

Achromatopsia
AAAAAA

Achromatomaly
B9A4A1

CSS Examples

Text

The CSS property to change the color of the text to Hex D39992 is called "color". The color property can be set on classes, ids or directly on the HTML element.

This example shows how text in the color #D39992 looks like.

```
.text, #text, p{  
    color:#D39992  
}
```

If you want to add a text shadow in that color use the text-shadow property, you can generate a text shadow directly with our [CSS Text Shadow Generator](#).

Here you see how black text with a 4 pixel #D39992 colored shadow looks like.

```
.shadow{ text-shadow: 4px 4px 2px #D39992
}
```

Border

The CSS property to change the border of an element to Hex D39992 is called "border". The border property can be set on classes, ids or directly on the HTML element.

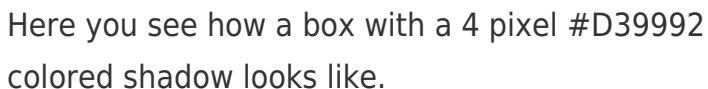
This example shows the color as border, it can be applied via the CSS property "border" or "border-color".

```
.border, #border, table{ border:4px solid
#D39992 }
```

If only the border color should be changed use the property `border-color`.

```
.border{ border-color:#D39992 }
```

If you want to add a box shadow in that color use:



Here you see how a box with a 4 pixel #D39992 colored shadow looks like.

```
.boxshadow{ -moz-box-shadow:4px 4px 4px  
4px #D39992; -webkit-box-shadow:4px 4px  
4px 4px #D39992; box-shadow:4px 4px 4px  
4px #D39992 }
```

Background

The CSS property to change the background color of an element to Hex D39992 is called "background". The background property can be set on classes, ids or directly on the HTML element.

```
.background, #background, body{  
background:#D39992 }
```

If only the background color should be changed can be used:

```
.background{ background-color:#D39992 }
```

This example shows the color as background, it is applied via the CSS property "background".

To optimize and compress your CSS code, you can use our [online CSS compressor and optimizer](#) based on csstidy. If you want to create a linear or radial gradient as background or border, check our [CSS Gradient Generator](#).

Hey! You found this booklet interesting? Support Converting Colors with the new Membership Option!

The pro membership hides all ads, plus gives you double the colors in the color bucket, and more awesome pro features!

[Learn more, Memberships starting at \\$2.50/m!](#)

**Follow me
on Twitter!**

@ConvertingColor