

Converting Colors

Hex(D39A8B)

Have a look what the booklet for
Hex(D39A8B) contains.

Hex(D39A8B)	3
<i>Conversions</i>	4
<i>Details</i>	6
<i>Harmonies</i>	11
<i>Previews</i>	23
<i>Color Blindness Simulation</i>	26
<i>CSS Examples</i>	29

Color

Hex(D39A8B)

Conversions

Conversions Part 1

Format	Color
Hex	D39A8B
RGB	211, 154, 139
RGB Percent	83%, 60%, 55%
CMY	0.1725, 0.3961, 0.4549
CMYK	0.00, 0.27, 0.34, 0.17
HSL	13°, 45%, 69%
HSV	13°, 34%, 83%
XYZ	43.0798, 38.8242, 29.6494
YIQ	169.3330, 38.7870, 7.4190

Conversions

Conversions Part 2

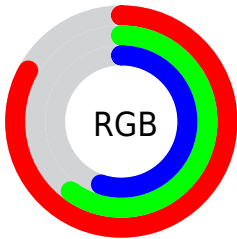
Format	Color
R _Y B	211, 158, 139
Decimal	13867659
CIE Lab	68.62, 19.32, 16.27
CIE LCh	69, 25.256, 40.107
Yxy	38.8242, 0.3862, 0.3480
Android (android.graphics.Color)	4292057739 (0xFFD39A8B)
YUV	169.3330, -14.9542, 36.5420
Hunter-Lab	62.3090, 14.3721, 15.4036

Details

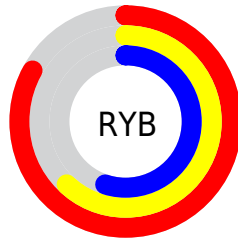
The Hex color **D39A8B** is a light color, and the websafe version is hex **CC9999**. A complement of this color would be **8BC4D3**, and the grayscale version is **A9A9A9**.

A 20% lighter version of the original color is **FFD1C1**, and **9B6759** is the 20% darker color. If you saturate the color by 10%, you get **D38976**, and if you desaturate by 10%, it is **D3ABA0**.

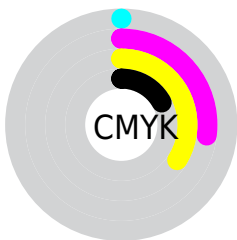
Distribution



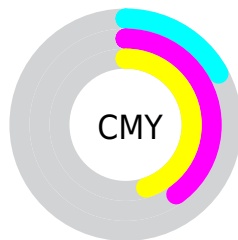
- Red (83%)
- Green (60%)
- Blue (55%)



- Red (83%)
- Yellow (62%)
- Blue (55%)



- Cyan (0%)
- Magenta (27%)
- Yellow (34%)
- Black (17%)



- Cyan (17%)
- Magenta (40%)
- Yellow (45%)

Brightness & Saturation Gradients

These gradients show how the Hex color D39A8B changes by changing the brightness by 10 percent. The first figure shows a shift by +10% for each color and the second figure -10%.

Similar to the brightness gradients but the following saturation gradients show a change of the Hex color D39A8B by changing the saturation by 10% instead.

 D39A8B

 D39A8B

FFFFFF

 B78072

 FFD1C1

 9B6759

 FFEDDC

 804E42

 FFFFF9

 65372B

 4C2117

 340B00

 1A0001

 000000

 D39A8B

 D39A8B

 D38976

 D3ABA0

 D37961

 D3BBB5

 D3684C

 D3CCCA

 D35737

 D3DDDF

 D34622

 D3EEF4

 D3360C

 D3FEFF

 D32C00

 D3FFFF

Harmonies

Analogous

The Analogous color harmony consists of three colors that are next to each other on the color wheel.



D597A0



D39A8B



C6A17D

Triad

The Triadic color harmony groups three colors that are evenly spaced from another and form a triangle on the color wheel.



D39A8B



7DB397



96A7D4

Complementary

The Complementary color scheme is a pair of colors which are on the opposite of each other on the color wheel.



D39A8B



8BC4D3

Split Complementary

Split-complementary colors differ from the complementary color scheme. The scheme consists of three colors, the original color and two neighbors of the complement color.



77AED2



D39A8B



69B4AF

Square

The Square scheme is like the rectangle color scheme, but the four colors are evenly spaced on the color wheel.



D39A8B



97AF84



65B3C4



B59FCA

Rectangle

The Rectangle color scheme consists of four colors that form a rectangle on the color wheel.



D39A8B



B8A67A



65B3C4



8BA9D5

Sweetspot

The Sweet Spot groups the original color and five complimentary colors.



D39A8B



FFEBE6



D38BC5



807370



000000



808080

Same Dimension

The Same Dimension uses a secret algorithm to generate beautiful new colors.



D39A8B



FFAC96



D3BD8B



69605E



A82300



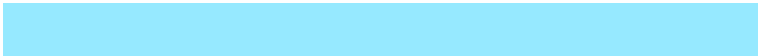
290900

Inverse Universe

The Inverse Universe completely reimagines the original color for something new.



8BC4D3



96E9FF



8BA1D3



5E6669



0085A8



002029

Previews

White Background



This preview shows how the Hex color D39A8B looks on a white background.

Color Contrast Check

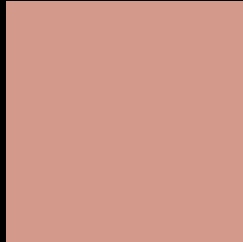
Large Text (above 18pt) WCAG AA × Fail

Any Text WCAG AA × Fail

Large Text (above 18pt) WCAG AAA × Fail

Any Text WCAG AAA × Fail

Black Background



This preview shows how the Hex color D39A8B looks on a black background.

Color Contrast Check

Large Text (above 18pt) WCAG AA ✓ Pass

Any Text WCAG AA ✓ Pass

Large Text (above 18pt) WCAG AAA ✓ Pass

Any Text WCAG AAA ✓ Pass

If you want to check with other color combinations, try the [Color Contrast Checker](#).

Hex D39A8B Background



This preview shows how black text looks on a background with the Hex color D39A8B.

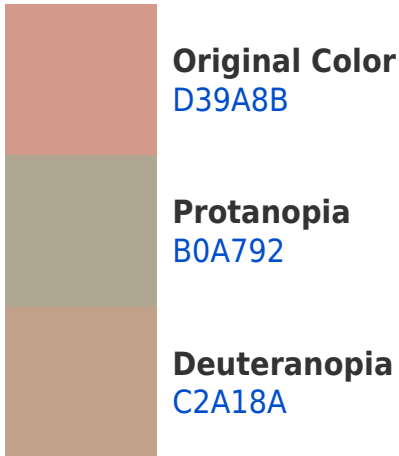


This preview shows how white text looks on a background with the Hex color D39A8B.

Color Blindness Simulation

Color vision deficiency is a very complex topic, and I could not describe the different causes any better than Wikipedia does, so if you want to learn more, you should check out their [article about color blindness](#).

Dichromacy





Tritanopia
D597A2

Trichromacy



Original Color
D39A8B

Protanomaly
BDA28F

Deuteranomaly
C89E8A

Tritanomaly
D4989A

Monochromacy



Original Color
D39A8B

Achromatopsia
A9A9A9

Achromatomaly
B8A49E

CSS Examples

Text

The CSS property to change the color of the text to Hex D39A8B is called "color". The color property can be set on classes, ids or directly on the HTML element.

This example shows how text in the color #D39A8B looks like.

```
.text, #text, p{  
    color:#D39A8B  
}
```

If you want to add a text shadow in that color use the text-shadow property, you can generate a text shadow directly with our [CSS Text Shadow Generator](#).

Here you see how black text with a 4 pixel #D39A8B colored shadow looks like.

```
.shadow{ text-shadow: 4px 4px 2px #D39A8B
}
```

Border

The CSS property to change the border of an element to Hex D39A8B is called "border". The border property can be set on classes, ids or directly on the HTML element.

This example shows the color as border, it can be applied via the CSS property "border" or "border-color".

```
.border, #border, table{ border:4px solid
#D39A8B }
```

If only the border color should be changed use the property `border-color`.

```
.border{ border-color:#D39A8B }
```

If you want to add a box shadow in that color use:

Here you see how a box with a 4 pixel #D39A8B colored shadow looks like.

```
.boxshadow{ -moz-box-shadow:4px 4px 4px  
4px #D39A8B; -webkit-box-shadow:4px 4px  
4px 4px #D39A8B; box-shadow:4px 4px 4px  
4px #D39A8B }
```

Background

The CSS property to change the background color of an element to Hex D39A8B is called "background". The background property can be set on classes, ids or directly on the HTML element.

```
.background, #background, body{  
background:#D39A8B }
```

If only the background color should be changed can be used:

```
.background{ background-color:#D39A8B }
```

This example shows the color as background, it is applied via the CSS property "background".

To optimize and compress your CSS code, you can use our [online CSS compressor and optimizer](#) based on csstidy. If you want to create a linear or radial gradient as background or border, check our [CSS Gradient Generator](#).

Hey! You found this booklet interesting? Support Converting Colors with the new Membership Option!

The pro membership hides all ads, plus gives you double the colors in the color bucket, and more awesome pro features!

[Learn more, Memberships starting at \\$2.50/m!](#)

**Follow me
on Twitter!**

@ConvertingColor