

Converting Colors

Hex(D39B99)

Have a look what the booklet for
Hex(D39B99) contains.

Hex(D39B99)	3
<i>Conversions</i>	4
<i>Details</i>	6
<i>Harmonies</i>	11
<i>Previews</i>	23
<i>Color Blindness Simulation</i>	26
<i>CSS Examples</i>	29

Color

Hex(D39B99)

Conversions

Conversions Part 1

Format	Color
Hex	D39B99
RGB	211, 155, 153
RGB Percent	83%, 61%, 60%
CMY	0.1725, 0.3922, 0.4000
CMYK	0.00, 0.27, 0.27, 0.17
HSL	2°, 40%, 71%
HSV	2°, 27%, 83%
XYZ	44.3351, 39.5915, 35.4422
YIQ	171.5160, 34.0180, 11.2500

Conversions

Conversions Part 2

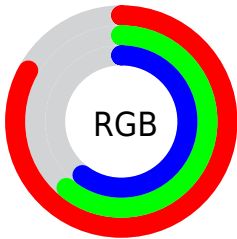
Format	Color
R _Y B	211, 155, 153
Decimal	13867929
CIE Lab	69.18, 20.62, 9.28
CIE LCh	69, 22.616, 24.224
Yxy	39.5915, 0.3714, 0.3317
Android (android.graphics.Color)	4292058009 (0xFFD39B99)
YUV	171.5160, -9.1284, 34.6275
Hunter-Lab	62.9218, 15.6592, 10.6487

Details

The Hex color **D39B99** is a light color, and the websafe version is hex **CC9999**. A complement of this color would be **99D1D3**, and the grayscale version is **ACACAC**.

A 20% lighter version of the original color is **FFD2CF**, and **9B6766** is the 20% darker color. If you saturate the color by 10%, you get **D38784**, and if you desaturate by 10%, it is **D3AFAE**.

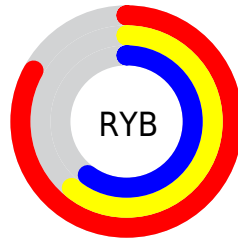
Distribution



Red (83%)

Green (61%)

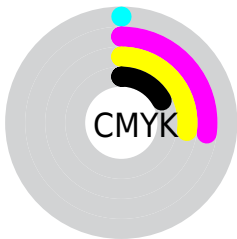
Blue (60%)



Red (83%)

Yellow (61%)

Blue (60%)

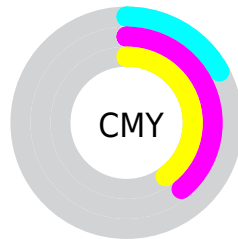


Cyan (0%)

Magenta (27%)

Yellow (27%)

Black (17%)



Cyan (17%)

Magenta (39%)

Yellow (40%)

Brightness & Saturation Gradients

These gradients show how the Hex color D39B99 changes by changing the brightness by 10 percent. The first figure shows a shift by +10% for each color and the second figure -10%.

Similar to the brightness gradients but the following saturation gradients show a change of the Hex color D39B99 by changing the saturation by 10% instead.

 D39B99

 D39B99

FFFFFF

 B7817F

 FFD2CF

 9B6766

 FFEEEC

 804F4E

 663837

 4D2122

 350B0C

 1F0001

 000000

 D39B99

 D39B99

 D38784

 D3AFAE

 D3726F

 D3C4C3

 D35E5A

 D3D8D8

 D34A45

 D3ECED

 D3352F

 D3FFFF

 D3211A

 D30C05

 D30700

Harmonies

Analogous

The Analogous color harmony consists of three colors that are next to each other on the color wheel.



CF9BAE



D39B99



CCA088

Triad

The Triadic color harmony groups three colors that are evenly spaced from another and form a triangle on the color wheel.



D39B99



8FB290



8BACD1

Complementary

The Complementary color scheme is a pair of colors which are on the opposite of each other on the color wheel.



D39B99



99D1D3

Split Complementary

Split-complementary colors differ from the complementary color scheme. The scheme consists of three colors, the original color and two neighbors of the complement color.



75B1C9



D39B99



7AB4A4

Square

The Square scheme is like the rectangle color scheme, but the four colors are evenly spaced on the color wheel.



D39B99



A7AD83



6FB4B9



A7A5CE

Rectangle

The Rectangle color scheme consists of four colors that form a rectangle on the color wheel.



D39B99



C2A482



6FB4B9



83AED0

Sweetspot

The Sweet Spot groups the original color and five complimentary colors.



D39B99



FFEBE8



D399D1



807373



000000



808080

Same Dimension

The Same Dimension uses a secret algorithm to generate beautiful new colors.



D39B99



FFAEAB



D3B899



695E5E



A80600



290100

Inverse Universe

The Inverse Universe completely reimagines the original color for something new.



99D1D3



ABFCFF



99B4D3



5E6869



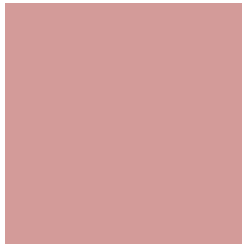
00A2A8



002729

Previews

White Background



This preview shows how the Hex color D39B99 looks on a white background.

Color Contrast Check

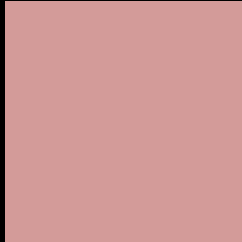
Large Text (above 18pt) WCAG AA × Fail

Any Text WCAG AA × Fail

Large Text (above 18pt) WCAG AAA × Fail

Any Text WCAG AAA × Fail

Black Background



This preview shows how the Hex color D39B99 looks on a black background.

Color Contrast Check

Large Text (above 18pt) WCAG AA ✓ Pass

Any Text WCAG AA ✓ Pass

Large Text (above 18pt) WCAG AAA ✓ Pass

Any Text WCAG AAA ✓ Pass

If you want to check with other color combinations, try the [Color Contrast Checker](#).

Hex D39B99 Background



This preview shows how black text looks on a background with the Hex color D39B99.

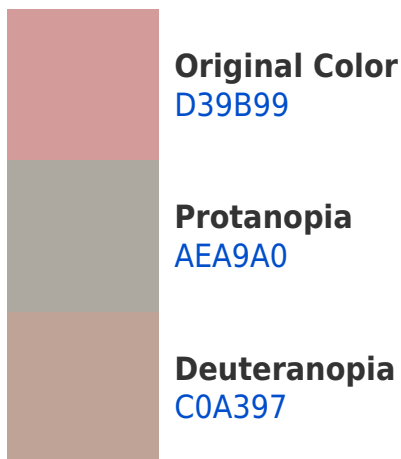


This preview shows how white text looks on a background with the Hex color D39B99.

Color Blindness Simulation

Color vision deficiency is a very complex topic, and I could not describe the different causes any better than Wikipedia does, so if you want to learn more, you should check out their [article about color blindness](#).

Dichromacy





Tritanopia
D499A5

Trichromacy



Original Color
D39B99

Protanomaly
BBA49D

Deuteranomaly
C7A098

Tritanomaly
D49AA1

Monochromacy



Original Color
D39B99

Achromatopsia
ACACAC

Achromatomaly
BAA6A5

CSS Examples

Text

The CSS property to change the color of the text to Hex D39B99 is called "color". The color property can be set on classes, ids or directly on the HTML element.

This example shows how text in the color #D39B99 looks like.

```
.text, #text, p{  
    color:#D39B99  
}
```

If you want to add a text shadow in that color use the text-shadow property, you can generate a text shadow directly with our [CSS Text Shadow Generator](#).

Here you see how black text with a 4 pixel #D39B99 colored shadow looks like.

```
.shadow{ text-shadow: 4px 4px 2px #D39B99
}
```

Border

The CSS property to change the border of an element to Hex D39B99 is called "border". The border property can be set on classes, ids or directly on the HTML element.

This example shows the color as border, it can be applied via the CSS property "border" or "border-color".

```
.border, #border, table{ border:4px solid
#D39B99 }
```

If only the border color should be changed use the property `border-color`.

```
.border{ border-color:#D39B99 }
```

If you want to add a box shadow in that color use:

Here you see how a box with a 4 pixel #D39B99 colored shadow looks like.

```
.boxshadow{ -moz-box-shadow:4px 4px 4px  
4px #D39B99; -webkit-box-shadow:4px 4px  
4px 4px #D39B99; box-shadow:4px 4px 4px  
4px #D39B99 }
```

Background

The CSS property to change the background color of an element to Hex D39B99 is called "background". The background property can be set on classes, ids or directly on the HTML element.

```
.background, #background, body{  
background:#D39B99 }
```

If only the background color should be changed can be used:

```
.background{ background-color:#D39B99 }
```

This example shows the color as background, it is applied via the CSS property "background".

To optimize and compress your CSS code, you can use our [online CSS compressor and optimizer](#) based on csstidy. If you want to create a linear or radial gradient as background or border, check our [CSS Gradient Generator](#).

Hey! You found this booklet interesting? Support Converting Colors with the new Membership Option!

The pro membership hides all ads, plus gives you double the colors in the color bucket, and more awesome pro features!

[Learn more, Memberships starting at \\$2.50/m!](#)

**Follow me
on Twitter!**

@ConvertingColor