

# Converting Colors

Hex(D39E99)

Have a look what the booklet for  
Hex(D39E99) contains.

<b>Hex(D39E99)</b> .....	3
<b><i>Conversions</i></b> .....	4
<b><i>Details</i></b> .....	6
<b><i>Harmonies</i></b> .....	11
<b><i>Previews</i></b> .....	23
<b><i>Color Blindness Simulation</i></b> .....	26
<b><i>CSS Examples</i></b> .....	29

# **Color**

**Hex(D39E99)**

# Conversions

## Conversions Part 1

Format	Color
Hex	D39E99
RGB	211, 158, 153
RGB Percent	83%, 62%, 60%
CMY	0.1725, 0.3804, 0.4000
CMYK	0.00, 0.25, 0.27, 0.17
HSL	5°, 40%, 71%
HSV	5°, 27%, 83%
XYZ	44.8406, 40.6025, 35.6107
YIQ	173.2770, 33.1930, 9.6810

# Conversions

## Conversions Part 2

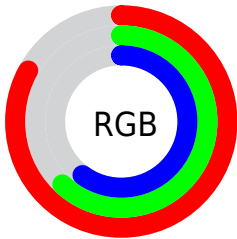
Format	Color
R <sub>Y</sub> B	211, 158, 153
Decimal	13868697
CIE Lab	69.90, 18.99, 10.30
CIE LCh	70, 21.607, 28.474
Yxy	40.6025, 0.3704, 0.3354
Android (android.graphics.Color)	4292058777 (0xFFD39E99)
YUV	173.2770, -9.9966, 33.0831
Hunter-Lab	63.7201, 14.1024, 11.4692

# Details

The Hex color **D39E99** is a light color, and the websafe version is hex **CC9999**. A complement of this color would be **99CED3**, and the grayscale version is **ADADAD**.

A 20% lighter version of the original color is **FFD5CF**, and **9B6A66** is the 20% darker color. If you saturate the color by 10%, you get **D38B84**, and if you desaturate by 10%, it is **D3B1AE**.

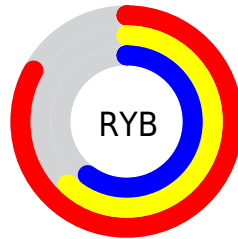
# Distribution



Red (83%)

Green (62%)

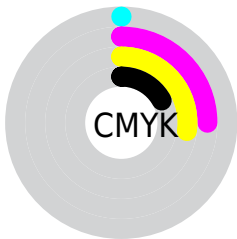
Blue (60%)



Red (83%)

Yellow (62%)

Blue (60%)

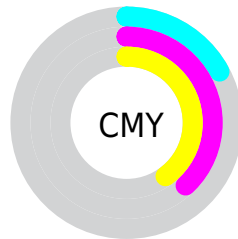


Cyan (0%)

Magenta (25%)

Yellow (27%)

Black (17%)



Cyan (17%)

Magenta (38%)

Yellow (40%)

# Brightness & Saturation Gradients

These gradients show how the Hex color D39E99 changes by changing the brightness by 10 percent. The first figure shows a shift by +10% for each color and the second figure -10%.

Similar to the brightness gradients but the following saturation gradients show a change of the Hex color D39E99 by changing the saturation by 10% instead.



 D39E99

 D39E99

FFFFFF

 B7847F

 FFD5CF

 9B6A66

 FFF1EC

 80524E

 663A37

 4D2422

 350F0C

 200001

 000000

 D39E99

 D39E99

 D38B84

 D3B1AE

 D3776F

 D3C5C3

 D3645A

 D3D8D8

 D35145

 D3EBED

 D33E2F

 D3FEFF

 D32A1A

 D3FFFF

 D31705

 D31200

# Harmonies

## Analogous

The Analogous color harmony consists of three colors that are next to each other on the color wheel.



D19DAD



D39E99



CBA38A

# Triad

The Triadic color harmony groups three colors that are evenly spaced from another and form a triangle on the color wheel.



D39E99



8FB496



92ADD2

# Complementary

The Complementary color scheme is a pair of colors which are on the opposite of each other on the color wheel.



D39E99



99CED3

# Split Complementary

Split-complementary colors differ from the complementary color scheme. The scheme consists of three colors, the original color and two neighbors of the complement color.



7CB2CC



D39E99



7CB6A9

# Square

The Square scheme is like the rectangle color scheme, but the four colors are evenly spaced on the color wheel.



D39E99



A6AF88



74B5BD



ADA6CD

# Rectangle

The Rectangle color scheme consists of four colors that form a rectangle on the color wheel.



D39E99



C1A785



74B5BD



8AAFD1

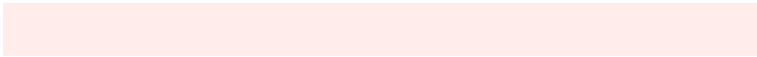


# Sweetspot

The Sweet Spot groups the original color and five complimentary colors.



D39E99



FFECEB



D399CE



807473



000000



808080



# Same Dimension

The Same Dimension uses a secret algorithm to generate beautiful new colors.



D39E99



FFB2AB



D3BB99



695F5E



A80F00



290400



# Inverse Universe

The Inverse Universe completely reimagines the original color for something new.



99CED3



ABF8FF



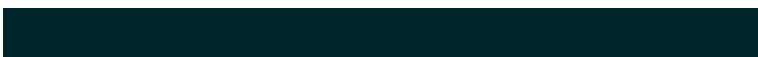
99B1D3



5E6869



009AA8

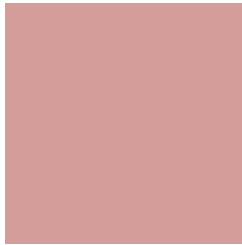


002529



# Previews

## White Background



This preview shows how the Hex color D39E99 looks on a white background.

## Color Contrast Check

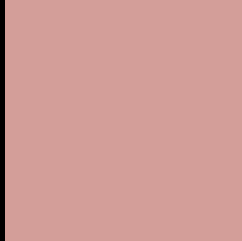
Large Text (above 18pt) WCAG AA × Fail

Any Text WCAG AA × Fail

Large Text (above 18pt) WCAG AAA × Fail

Any Text WCAG AAA × Fail

# Black Background



This preview shows how the Hex color D39E99 looks on a black background.

## Color Contrast Check

Large Text (above 18pt) WCAG AA ✓ Pass

Any Text WCAG AA ✓ Pass

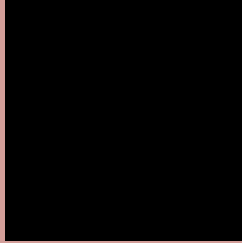
Large Text (above 18pt) WCAG AAA ✓ Pass

Any Text WCAG AAA ✓ Pass

If you want to check with other color combinations, try the [Color Contrast Checker](#).



## Hex D39E99 Background



This preview shows how black text looks on a background with the Hex color D39E99.

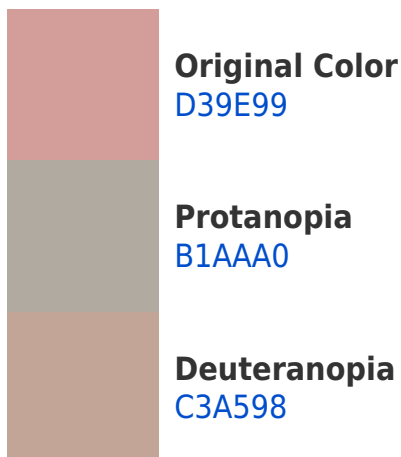


This preview shows how white text looks on a background with the Hex color D39E99.

# Color Blindness Simulation

Color vision deficiency is a very complex topic, and I could not describe the different causes any better than Wikipedia does, so if you want to learn more, you should check out their [article about color blindness](#).

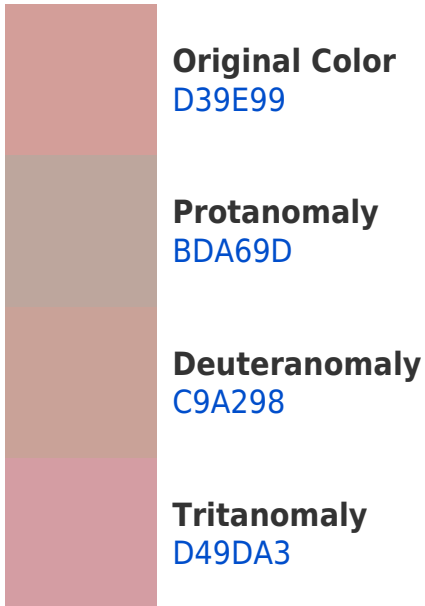
## Dichromacy



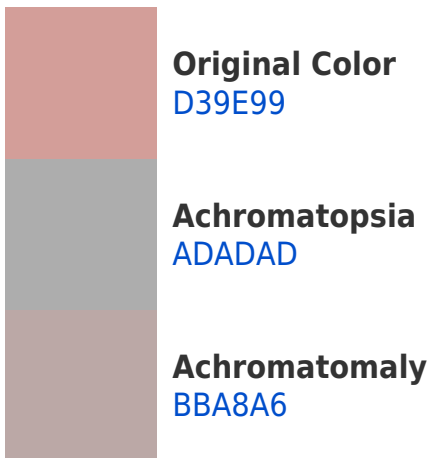


**Tritanopia**  
D59CA8

# Trichromacy



# Monochromacy



# CSS Examples

## Text

The CSS property to change the color of the text to Hex D39E99 is called "color". The color property can be set on classes, ids or directly on the HTML element.

This example shows how text in the color #D39E99 looks like.

```
.text, #text, p{  
    color:#D39E99  
}
```

If you want to add a text shadow in that color use the text-shadow property, you can generate a text shadow directly with our [CSS Text Shadow Generator](#).

Here you see how black text with a 4 pixel #D39E99 colored shadow looks like.

```
.shadow{ text-shadow: 4px 4px 2px #D39E99  
}
```

## Border

The CSS property to change the border of an element to Hex D39E99 is called "border". The border property can be set on classes, ids or directly on the HTML element.

This example shows the color as border, it can be applied via the CSS property "border" or "border-color".

```
.border, #border, table{ border:4px solid  
#D39E99 }
```

If only the border color should be changed use the property `border-color`.

```
.border{ border-color:#D39E99 }
```

If you want to add a box shadow in that color use:

Here you see how a box with a 4 pixel #D39E99 colored shadow looks like.

```
.boxshadow{ -moz-box-shadow:4px 4px 4px  
4px #D39E99; -webkit-box-shadow:4px 4px  
4px 4px #D39E99; box-shadow:4px 4px 4px  
4px #D39E99 }
```

# Background

The CSS property to change the background color of an element to Hex D39E99 is called "background". The background property can be set on classes, ids or directly on the HTML element.

```
.background, #background, body{  
background:#D39E99 }
```

If only the background color should be changed can be used:

```
.background{ background-color:#D39E99 }
```

This example shows the color as background, it is applied via the CSS property "background".

To optimize and compress your CSS code, you can use our [online CSS compressor and optimizer](#) based on csstidy. If you want to create a linear or radial gradient as background or border, check our [CSS Gradient Generator](#).



Hey! You found this booklet interesting? Support Converting Colors with the new Membership Option!

The pro membership hides all ads, plus gives you double the colors in the color bucket, and more awesome pro features!

**[Learn more, Memberships starting at \\$2.50/m!](#)**

**Follow me  
on Twitter!**

@ConvertingColor