

# Converting Colors

Hex(D3A4A9)

Have a look what the booklet for  
Hex(D3A4A9) contains.

<b>Hex(D3A4A9)</b> .....	3
<i><b>Conversions</b></i> .....	4
<i><b>Details</b></i> .....	6
<i><b>Harmonies</b></i> .....	11
<i><b>Previews</b></i> .....	23
<i><b>Color Blindness Simulation</b></i> .....	26
<i><b>CSS Examples</b></i> .....	29

# **Color**

**Hex(D3A4A9)**

# Conversions

## Conversions Part 1

Format	Color
Hex	D3A4A9
RGB	211, 164, 169
RGB Percent	83%, 64%, 66%
CMY	0.1725, 0.3569, 0.3373
CMYK	0.00, 0.22, 0.20, 0.17
HSL	354°, 35%, 74%
HSV	354°, 22%, 83%
XYZ	47.3009, 43.2644, 43.3940
YIQ	178.6230, 26.4070, 11.5190

# Conversions

## Conversions Part 2

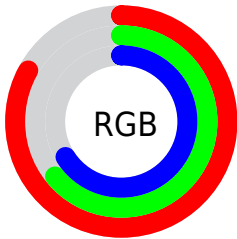
Format	Color
<a href="#">RYB</a>	<a href="#">211, 164, 169</a>
Decimal	<a href="#">13870249</a>
CIELab	<a href="#">71.73, 18.07, 4.08</a>
CIELCh	<a href="#">72, 18.522, 12.739</a>
Yxy	<a href="#">43.2644, 0.3531, 0.3230</a>
Android (android.graphics.Color)	<a href="#">4292060329 (0xFFD3A4A9)</a>
YUV	<a href="#">178.6230, -4.7441, 28.3946</a>
Hunter-Lab	<a href="#">65.7757, 13.2562, 6.9278</a>

# Details

The Hex color **D3A4A9** is a light color, and the websafe version is hex **CC9999**. A complement of this color would be **A4D3CE**, and the grayscale version is **B3B3B3**.

A 20% lighter version of the original color is **FFDBE0**, and **9C7075** is the 20% darker color. If you saturate the color by 10%, you get **D38F96**, and if you desaturate by 10%, it is **D3B9BC**.

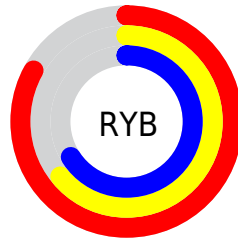
# Distribution



Red (83%)

Green (64%)

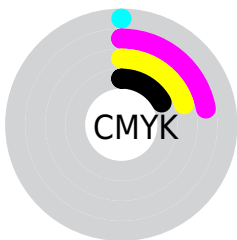
Blue (66%)



Red (83%)

Yellow (64%)

Blue (66%)

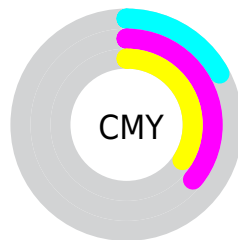


Cyan (0%)

Magenta (22%)

Yellow (20%)

Black (17%)



Cyan (17%)

Magenta (36%)

Yellow (34%)

# Brightness & Saturation Gradients

These gradients show how the Hex color D3A4A9 changes by changing the brightness by 10 percent. The first figure shows a shift by +10% for each color and the second figure -10%.

Similar to the brightness gradients but the following saturation gradients show a change of the Hex color D3A4A9 by changing the saturation by 10% instead.



 D3A4A9

 D3A4A9

FFFFFF

 B78A8F

 FFDBE0

 9C7075

 FFF8FD

 81575C

 674045

 4E292F

 36141A

 240000

 000000

 D3A4A9

 D3A4A9

 D38F96

 D3B9BC

 D37A83

 D3CECF

 D36570

 D3E3E2

 D3505E

 D3F8F4

 D33B4B

 D3FFFF

 D32538

 D31025

 D30016

# Harmonies

## Analogous

The Analogous color harmony consists of three colors that are next to each other on the color wheel.



CCA5BA



D3A4A9



D1A69A

# Triad

The Triadic color harmony groups three colors that are evenly spaced from another and form a triangle on the color wheel.



D3A4A9



A2B697



91B4D0

# Complementary

The Complementary color scheme is a pair of colors which are on the opposite of each other on the color wheel.



D3A4A9



A4D3CE

# Split Complementary

Split-complementary colors differ from the complementary color scheme. The scheme consists of three colors, the original color and two neighbors of the complement color.



84B8C6



D3A4A9



90B9A5

# Square

The Square scheme is like the rectangle color scheme, but the four colors are evenly spaced on the color wheel.



D3A4A9



B5B18F



84BAB7



A6AFD0

# Rectangle

The Rectangle color scheme consists of four colors that form a rectangle on the color wheel.



D3A4A9



CAAA92



84BAB7



8BB6CD

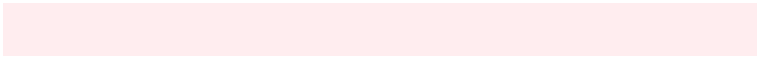


# Sweetspot

The Sweet Spot groups the original color and five complimentary colors.



D3A4A9



FFEDEF



CEA4D3



807576



000000



808080



# Same Dimension

The Same Dimension uses a secret algorithm to generate beautiful new colors.



D3A4A9



FFBAC1



D3B6A4



695E5F



A80012



290004



# Inverse Universe

The Inverse Universe completely reimagines the original color for something new.



D3A4A9



FFBAC1



A4C1D3



695E5F



A80012



290004



# Previews

## White Background



This preview shows how the Hex color D3A4A9 looks on a white background.

## Color Contrast Check

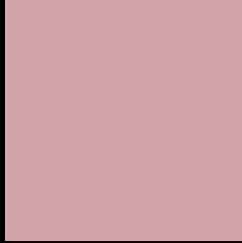
Large Text (above 18pt) WCAG AA × Fail

Any Text WCAG AA × Fail

Large Text (above 18pt) WCAG AAA × Fail

Any Text WCAG AAA × Fail

# Black Background



This preview shows how the Hex color D3A4A9 looks on a black background.

## Color Contrast Check

Large Text (above 18pt) WCAG AA ✓ Pass

Any Text WCAG AA ✓ Pass

Large Text (above 18pt) WCAG AAA ✓ Pass

Any Text WCAG AAA ✓ Pass

If you want to check with other color combinations, try the [Color Contrast Checker](#).



## Hex D3A4A9 Background



This preview shows how black text looks on a background with the Hex color D3A4A9.

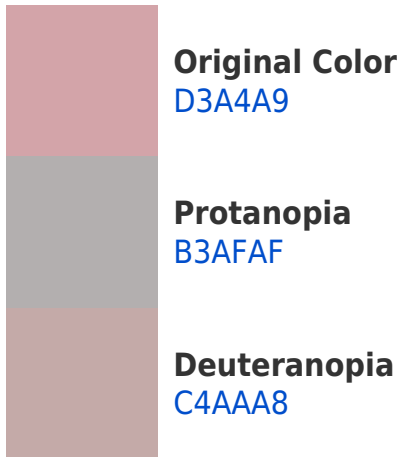


This preview shows how white text looks on a background with the Hex color D3A4A9.

# Color Blindness Simulation

Color vision deficiency is a very complex topic, and I could not describe the different causes any better than Wikipedia does, so if you want to learn more, you should check out their [article about color blindness](#).

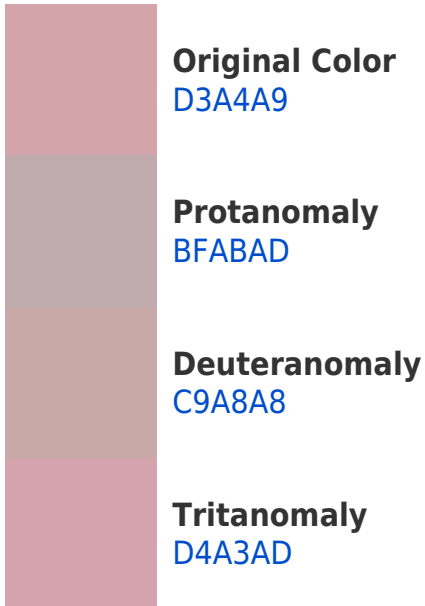
## Dichromacy



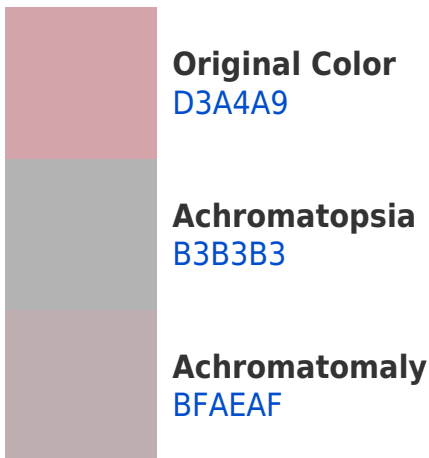


**Tritanopia**  
D4A3B0

# Trichromacy



# Monochromacy



# CSS Examples

## Text

The CSS property to change the color of the text to Hex D3A4A9 is called "color". The color property can be set on classes, ids or directly on the HTML element.

This example shows how text in the color #D3A4A9 looks like.

```
.text, #text, p{  
    color:#D3A4A9  
}
```

If you want to add a text shadow in that color use the text-shadow property, you can generate a text shadow directly with our [CSS Text Shadow Generator](#).

Here you see how black text with a 4 pixel #D3A4A9 colored shadow looks like.

```
.shadow{ text-shadow: 4px 4px 2px #D3A4A9
}
```

## Border

The CSS property to change the border of an element to Hex D3A4A9 is called "border". The border property can be set on classes, ids or directly on the HTML element.

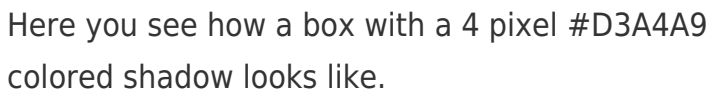
This example shows the color as border, it can be applied via the CSS property "border" or "border-color".

```
.border, #border, table{ border:4px solid
#D3A4A9 }
```

If only the border color should be changed use the property `border-color`.

```
.border{ border-color:#D3A4A9 }
```

If you want to add a box shadow in that color use:



Here you see how a box with a 4 pixel #D3A4A9 colored shadow looks like.

```
.boxshadow{ -moz-box-shadow:4px 4px 4px  
4px #D3A4A9; -webkit-box-shadow:4px 4px  
4px 4px #D3A4A9; box-shadow:4px 4px 4px  
4px #D3A4A9 }
```

# Background

The CSS property to change the background color of an element to Hex D3A4A9 is called "background". The background property can be set on classes, ids or directly on the HTML element.

```
.background, #background, body{  
background:#D3A4A9 }
```

If only the background color should be changed can be used:

```
.background{ background-color:#D3A4A9 }
```

This example shows the color as background, it is applied via the CSS property "background".

To optimize and compress your CSS code, you can use our [online CSS compressor and optimizer](#) based on csstidy. If you want to create a linear or radial gradient as background or border, check our [CSS Gradient Generator](#).



Hey! You found this booklet interesting? Support Converting Colors with the new Membership Option!

The pro membership hides all ads, plus gives you double the colors in the color bucket, and more awesome pro features!

**[Learn more, Memberships starting at \\$2.50/m!](#)**

**Follow me  
on Twitter!**

@ConvertingColor