

# Converting Colors

Hex(D3A4AB)

Have a look what the booklet for  
Hex(D3A4AB) contains.

<b>Hex(D3A4AB)</b> .....	3
<i><b>Conversions</b></i> .....	4
<i><b>Details</b></i> .....	6
<i><b>Harmonies</b></i> .....	11
<i><b>Previews</b></i> .....	23
<i><b>Color Blindness Simulation</b></i> .....	26
<i><b>CSS Examples</b></i> .....	29

# **Color**

**Hex(D3A4AB)**

# Conversions

## Conversions Part 1

Format	Color
Hex	D3A4AB
RGB	211, 164, 171
RGB Percent	83%, 64%, 67%
CMY	0.1725, 0.3569, 0.3294
CMYK	0.00, 0.22, 0.19, 0.17
HSL	351°, 35%, 74%
HSV	351°, 22%, 83%
XYZ	47.4901, 43.3401, 44.3905
YIQ	178.8510, 25.7650, 12.1410

# Conversions

## Conversions Part 2

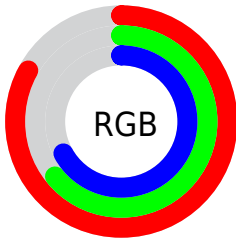
<b>Format</b>	<b>Color</b>
R <sub>Y</sub> B	211, 164, 171
Decimal	13870251
CIE Lab	71.79, 18.37, 3.05
CIE LCh	72, 18.625, 9.438
Yxy	43.3401, 0.3512, 0.3205
Android (android.graphics.Color)	4292060331 (0xFFD3A4AB)
YUV	178.8510, -3.8705, 28.1947
Hunter-Lab	65.8332, 13.5566, 6.1047

# Details

The Hex color **D3A4AB** is a light color, and the websafe version is hex **CC9999**. A complement of this color would be **A4D3CC**, and the grayscale version is **B3B3B3**.

A 20% lighter version of the original color is **FFDBE2**, and **9C7077** is the 20% darker color. If you saturate the color by 10%, you get **D38F99**, and if you desaturate by 10%, it is **D3B9BD**.

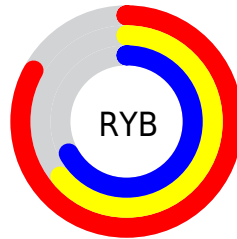
# Distribution



Red (83%)

Green (64%)

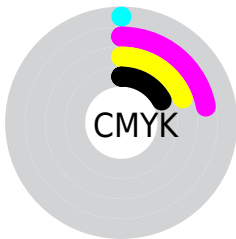
Blue (67%)



Red (83%)

Yellow (64%)

Blue (67%)

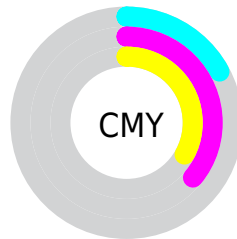


Cyan (0%)

Magenta (22%)

Yellow (19%)

Black (17%)



Cyan (17%)

Magenta (36%)

Yellow (33%)

# Brightness & Saturation Gradients

These gradients show how the Hex color D3A4AB changes by changing the brightness by 10 percent. The first figure shows a shift by +10% for each color and the second figure -10%.

Similar to the brightness gradients but the following saturation gradients show a change of the Hex color D3A4AB by changing the saturation by 10% instead.



 D3A4AB

 D3A4AB


FFFFFF

 B78A91

 FFDBE2

 9C7077

 FFF8FF

 81575E

 674047

 4F2930

 37141C

 240000

 000000

 D3A4AB

 D3A4AB

 D38F99

 D3B9BD

 D37A87

 D3CECF

 D36575

 D3E3E1

 D35063

 D3F8F3

 D33B51

 D3FFFF

 D3253F

 D3102D

 D3001F

# Harmonies

## Analogous

The Analogous color harmony consists of three colors that are next to each other on the color wheel.



CBA5BC



D3A4AB



D2A69B

# Triad

The Triadic color harmony groups three colors that are evenly spaced from another and form a triangle on the color wheel.



D3A4AB



A4B595



8FB5CF

# Complementary

The Complementary color scheme is a pair of colors which are on the opposite of each other on the color wheel.



D3A4AB



A4D3CC

# Split Complementary

Split-complementary colors differ from the complementary color scheme. The scheme consists of three colors, the original color and two neighbors of the complement color.



83B8C5



D3A4AB



92B9A3

# Square

The Square scheme is like the rectangle color scheme, but the four colors are evenly spaced on the color wheel.



D3A4AB



B8B08E



85BAB5



A4B0D1

# Rectangle

The Rectangle color scheme consists of four colors that form a rectangle on the color wheel.



D3A4AB



CCA993



85BAB5



8AB6CD



# Sweetspot

The Sweet Spot groups the original color and five complimentary colors.



D3A4AB



FFEDF0



CCA4D3



807577



000000



808080



# Same Dimension

The Same Dimension uses a secret algorithm to generate beautiful new colors.



D3A4AB



FFBAC4



D3B4A4



695E60



A80019



290006



# Inverse Universe

The Inverse Universe completely reimagines the original color for something new.



D3A4AB



FFBAC4



A4C3D3



695E60



A80019

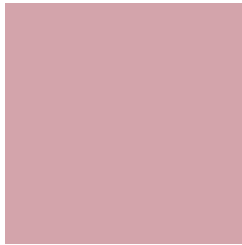


290006



# Previews

## White Background



This preview shows how the Hex color D3A4AB looks on a white background.

## Color Contrast Check

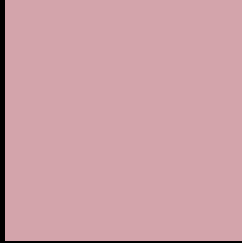
Large Text (above 18pt) WCAG AA × Fail

Any Text WCAG AA × Fail

Large Text (above 18pt) WCAG AAA × Fail

Any Text WCAG AAA × Fail

# Black Background



This preview shows how the Hex color D3A4AB looks on a black background.

## Color Contrast Check

Large Text (above 18pt) WCAG AA ✓ Pass

Any Text WCAG AA ✓ Pass

Large Text (above 18pt) WCAG AAA ✓ Pass

Any Text WCAG AAA ✓ Pass

If you want to check with other color combinations, try the [Color Contrast Checker](#).



## Hex D3A4AB Background



This preview shows how black text looks on a background with the Hex color D3A4AB.

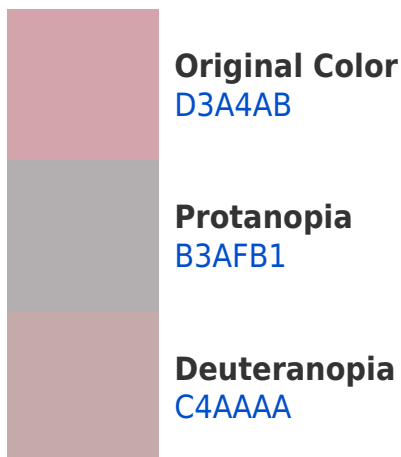


This preview shows how white text looks on a background with the Hex color D3A4AB.

# Color Blindness Simulation

Color vision deficiency is a very complex topic, and I could not describe the different causes any better than Wikipedia does, so if you want to learn more, you should check out their [article about color blindness](#).

## Dichromacy





**Tritanopia**  
D4A3B0

# Trichromacy



**Original Color**

D3A4AB

**Protanomaly**

BFABAF

**Deuteranomaly**

C9A8AA

**Tritanomaly**

D4A3AE

# Monochromacy



**Original Color**

D3A4AB

**Achromatopsia**

B3B3B3

**Achromatomaly**

BFAEB0

# CSS Examples

## Text

The CSS property to change the color of the text to Hex D3A4AB is called "color". The color property can be set on classes, ids or directly on the HTML element.

This example shows how text in the color #D3A4AB looks like.

```
.text, #text, p{  
    color:#D3A4AB  
}
```

If you want to add a text shadow in that color use the text-shadow property, you can generate a text shadow directly with our [CSS Text Shadow Generator](#).

Here you see how black text with a 4 pixel #D3A4AB colored shadow looks like.

```
.shadow{ text-shadow: 4px 4px 2px #D3A4AB
}
```

## Border

The CSS property to change the border of an element to Hex D3A4AB is called "border". The border property can be set on classes, ids or directly on the HTML element.

This example shows the color as border, it can be applied via the CSS property "border" or "border-color".

```
.border, #border, table{ border:4px solid
#D3A4AB }
```

If only the border color should be changed use the property `border-color`.

```
.border{ border-color:#D3A4AB }
```

If you want to add a box shadow in that color use:

Here you see how a box with a 4 pixel #D3A4AB colored shadow looks like.

```
.boxshadow{ -moz-box-shadow:4px 4px 4px  
4px #D3A4AB; -webkit-box-shadow:4px 4px  
4px 4px #D3A4AB; box-shadow:4px 4px 4px  
4px #D3A4AB }
```

# Background

The CSS property to change the background color of an element to Hex D3A4AB is called "background". The background property can be set on classes, ids or directly on the HTML element.

```
.background, #background, body{  
background:#D3A4AB }
```

If only the background color should be changed can be used:

```
.background{ background-color:#D3A4AB }
```

This example shows the color as background, it is applied via the CSS property "background".

To optimize and compress your CSS code, you can use our [online CSS compressor and optimizer](#) based on csstidy. If you want to create a linear or radial gradient as background or border, check our [CSS Gradient Generator](#).



Hey! You found this booklet interesting? Support Converting Colors with the new Membership Option!

The pro membership hides all ads, plus gives you double the colors in the color bucket, and more awesome pro features!

**[Learn more, Memberships starting at \\$2.50/m!](#)**

**Follow me  
on Twitter!**

@ConvertingColor