

# Converting Colors

Hex(D3A6AD)

Have a look what the booklet for  
Hex(D3A6AD) contains.

<b>Hex(D3A6AD)</b> .....	3
<i><b>Conversions</b></i> .....	4
<i><b>Details</b></i> .....	6
<i><b>Harmonies</b></i> .....	11
<i><b>Previews</b></i> .....	23
<i><b>Color Blindness Simulation</b></i> .....	26
<i><b>CSS Examples</b></i> .....	29

# **Color**

**Hex(D3A6AD)**

# Conversions

## Conversions Part 1

Format	Color
Hex	D3A6AD
RGB	211, 166, 173
RGB Percent	83%, 65%, 68%
CMY	0.1725, 0.3490, 0.3216
CMYK	0.00, 0.21, 0.18, 0.17
HSL	351°, 34%, 74%
HSV	351°, 21%, 83%
XYZ	48.0430, 44.1385, 45.5226
YIQ	180.2530, 24.5730, 11.7170

# Conversions

## Conversions Part 2

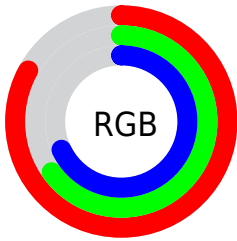
Format	Color
R <sub>Y</sub> B	211, 166, 173
Decimal	13870765
CIE Lab	72.32, 17.60, 2.73
CIE LCh	72, 17.808, 8.811
Yxy	44.1385, 0.3489, 0.3205
Android (android.graphics.Color)	4292060845 (0xFFD3A6AD)
YUV	180.2530, -3.5757, 26.9651
Hunter-Lab	66.4368, 12.8159, 5.8801

# Details

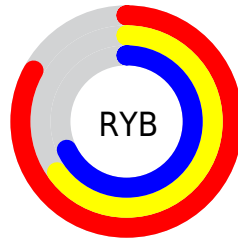
The Hex color **D3A6AD** is a light color, and the websafe version is hex **CC9999**. A complement of this color would be **A6D3CC**, and the grayscale version is **B4B4B4**.

A 20% lighter version of the original color is **FFDDE4**, and **9C7279** is the 20% darker color. If you saturate the color by 10%, you get **D3919B**, and if you desaturate by 10%, it is **D3BBBF**.

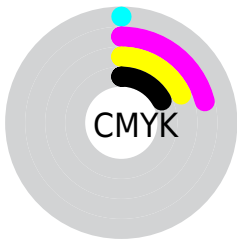
# Distribution



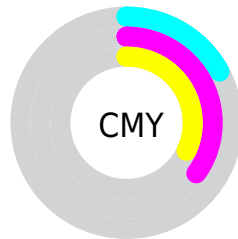
- Red (83%)
- Green (65%)
- Blue (68%)



- Red (83%)
- Yellow (65%)
- Blue (68%)



- Cyan (0%)
- Magenta (21%)
- Yellow (18%)
- Black (17%)



- Cyan (17%)
- Magenta (35%)
- Yellow (32%)

# Brightness & Saturation Gradients

These gradients show how the Hex color D3A6AD changes by changing the brightness by 10 percent. The first figure shows a shift by +10% for each color and the second figure -10%.

Similar to the brightness gradients but the following saturation gradients show a change of the Hex color D3A6AD by changing the saturation by 10% instead.



 D3A6AD

 D3A6AD

FFFFFF

 B78C92

 FFDDE4

 9C7279

 FFFAFF

 815960

 684148

 4F2B32

 37161D

 240003

 000000

 D3A6AD

 D3A6AD

 D3919B

 D3BBBF

 D37C89

 D3D0D1

 D36778

 D3E5E2

 D35266

 D3FAF4

 D33D54

 D3FFFF

 D32742

 D31230

 D30021

# Harmonies

## Analogous

The Analogous color harmony consists of three colors that are next to each other on the color wheel.



CBA7BD



D3A6AD



D2A89E

# Triad

The Triadic color harmony groups three colors that are evenly spaced from another and form a triangle on the color wheel.



D3A6AD



A7B798



92B6CF

# Complementary

The Complementary color scheme is a pair of colors which are on the opposite of each other on the color wheel.



D3A6AD



A6D3CC

# Split Complementary

Split-complementary colors differ from the complementary color scheme. The scheme consists of three colors, the original color and two neighbors of the complement color.



87BAC5



D3A6AD



95BAA5

# Square

The Square scheme is like the rectangle color scheme, but the four colors are evenly spaced on the color wheel.



D3A6AD



B9B291



89BBB6



A5B1D1

# Rectangle

The Rectangle color scheme consists of four colors that form a rectangle on the color wheel.



D3A6AD



CDAB96



89BBB6



8DB8CD

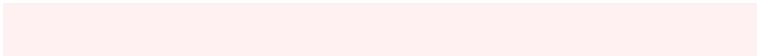


# Sweetspot

The Sweet Spot groups the original color and five complimentary colors.



D3A6AD



FFF0F2



CCA6D3



807778



000000



808080



# Same Dimension

The Same Dimension uses a secret algorithm to generate beautiful new colors.



D3A6AD



FFBDC7



D3B5A6



695E60



A8001A



290006



# Inverse Universe

The Inverse Universe completely reimagines the original color for something new.



D3A6AD



FFBDC7



A6C4D3



695E60



A8001A

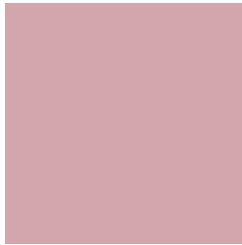


290006



# Previews

## White Background



This preview shows how the Hex color D3A6AD looks on a white background.

## Color Contrast Check

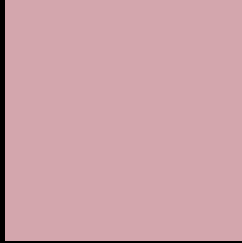
Large Text (above 18pt) WCAG AA × Fail

Any Text WCAG AA × Fail

Large Text (above 18pt) WCAG AAA × Fail

Any Text WCAG AAA × Fail

# Black Background



This preview shows how the Hex color D3A6AD looks on a black background.

## Color Contrast Check

Large Text (above 18pt) WCAG AA ✓ Pass

Any Text WCAG AA ✓ Pass

Large Text (above 18pt) WCAG AAA ✓ Pass

Any Text WCAG AAA ✓ Pass

If you want to check with other color combinations, try the [Color Contrast Checker](#).



## Hex D3A6AD Background



This preview shows how black text looks on a background with the Hex color D3A6AD.

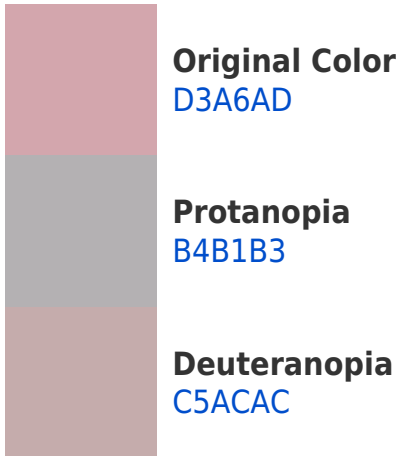


This preview shows how white text looks on a background with the Hex color D3A6AD.

# Color Blindness Simulation

Color vision deficiency is a very complex topic, and I could not describe the different causes any better than Wikipedia does, so if you want to learn more, you should check out their [article about color blindness](#).

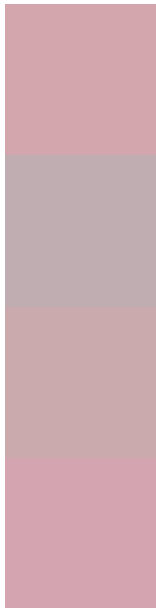
## Dichromacy





**Tritanopia**  
D4A5B2

# Trichromacy



**Original Color**  
D3A6AD

**Protanomaly**  
BFADB1

**Deuteranomaly**  
CAAAAC

**Tritanomaly**  
D4A5B0

# Monochromacy



**Original Color**  
D3A6AD

**Achromatopsia**  
B4B4B4

**Achromatomaly**  
BFAFB1

# CSS Examples

## Text

The CSS property to change the color of the text to Hex D3A6AD is called "color". The color property can be set on classes, ids or directly on the HTML element.

This example shows how text in the color #D3A6AD looks like.

```
.text, #text, p{  
    color:#D3A6AD  
}
```

If you want to add a text shadow in that color use the text-shadow property, you can generate a text shadow directly with our [CSS Text Shadow Generator](#).

Here you see how black text with a 4 pixel #D3A6AD colored shadow looks like.

```
.shadow{ text-shadow: 4px 4px 2px #D3A6AD }  
}
```

## Border

The CSS property to change the border of an element to Hex D3A6AD is called "border". The border property can be set on classes, ids or directly on the HTML element.

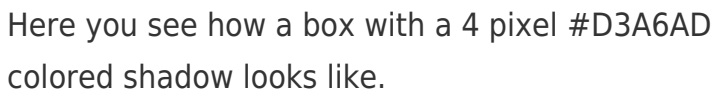
This example shows the color as border, it can be applied via the CSS property "border" or "border-color".

```
.border, #border, table{ border:4px solid #D3A6AD }  
}
```

If only the border color should be changed use the property `border-color`.

```
.border{ border-color:#D3A6AD }
```

If you want to add a box shadow in that color use:



Here you see how a box with a 4 pixel #D3A6AD colored shadow looks like.

```
.boxshadow{ -moz-box-shadow:4px 4px 4px  
4px #D3A6AD; -webkit-box-shadow:4px 4px  
4px 4px #D3A6AD; box-shadow:4px 4px 4px  
4px #D3A6AD }
```

# Background

The CSS property to change the background color of an element to Hex D3A6AD is called "background". The background property can be set on classes, ids or directly on the HTML element.

```
.background, #background, body{  
background:#D3A6AD }
```

If only the background color should be changed can be used:

```
.background{ background-color:#D3A6AD }
```

This example shows the color as background, it is applied via the CSS property "background".

To optimize and compress your CSS code, you can use our [online CSS compressor and optimizer](#) based on csstidy. If you want to create a linear or radial gradient as background or border, check our [CSS Gradient Generator](#).



Hey! You found this booklet interesting? Support Converting Colors with the new Membership Option!

The pro membership hides all ads, plus gives you double the colors in the color bucket, and more awesome pro features!

**[Learn more, Memberships starting at \\$2.50/m!](#)**

**Follow me  
on Twitter!**

@ConvertingColor