

# Converting Colors

Hex(D3ABB0)

Have a look what the booklet for  
Hex(D3ABB0) contains.

<b>Hex(D3ABB0)</b> .....	3
<b><i>Conversions</i></b> .....	4
<b><i>Details</i></b> .....	6
<b><i>Harmonies</i></b> .....	11
<b><i>Previews</i></b> .....	23
<b><i>Color Blindness Simulation</i></b> .....	26
<b><i>CSS Examples</i></b> .....	29

# **Color**

**Hex(D3ABB0)**

# Conversions

## Conversions Part 1

Format	Color
Hex	D3ABB0
RGB	211, 171, 176
RGB Percent	83%, 67%, 69%
CMY	0.1725, 0.3294, 0.3098
CMYK	0.00, 0.19, 0.17, 0.17
HSL	352°, 31%, 75%
HSV	352°, 19%, 83%
XYZ	49.2634, 46.1093, 47.3778
YIQ	183.5300, 22.2350, 10.0350

# Conversions

## Conversions Part 2

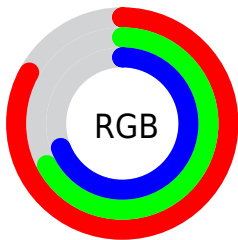
Format	Color
R <sub>Y</sub> B	211, 171, 176
Decimal	13872048
CIE Lab	73.62, 15.36, 2.96
CIE LCh	74, 15.640, 10.897
Yxy	46.1093, 0.3451, 0.3230
Android (android.graphics.Color)	4292062128 (0xFFD3ABB0)
YUV	183.5300, -3.7123, 24.0912
Hunter-Lab	67.9038, 10.6678, 6.1649

# Details

The Hex color **D3ABB0** is a light color, and the websafe version is hex **CC9999**. A complement of this color would be **ABD3CE**, and the grayscale version is **B8B8B8**.

A 20% lighter version of the original color is **FFE2E8**, and **9C777C** is the 20% darker color. If you saturate the color by 10%, you get **D3969E**, and if you desaturate by 10%, it is **D3C0C2**.

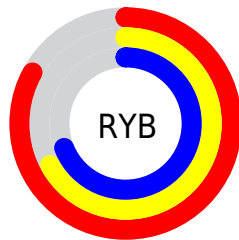
# Distribution



Red (83%)

Green (67%)

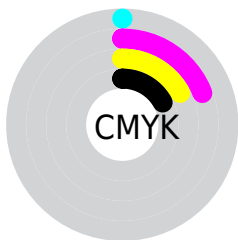
Blue (69%)



Red (83%)

Yellow (67%)

Blue (69%)

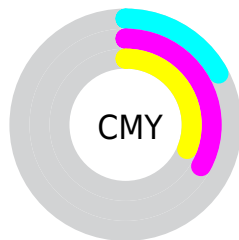


Cyan (0%)

Magenta (19%)

Yellow (17%)

Black (17%)



Cyan (17%)

Magenta (33%)

Yellow (31%)

# Brightness & Saturation Gradients

These gradients show how the Hex color D3ABB0 changes by changing the brightness by 10 percent. The first figure shows a shift by +10% for each color and the second figure -10%.

Similar to the brightness gradients but the following saturation gradients show a change of the Hex color D3ABB0 by changing the saturation by 10% instead.



 D3ABB0

 D3ABB0

FFFFFF

 B79095

 FFE2E8

 9C777C

 825E63

 68464B

 4F2F34

 381A1F

 230107

 000000

 D3ABB0

 D3ABB0

 D3969E

 D3C0C2

 D3818B

 D3D5D5

 D36C79

 D3EAE7

 D35766

 D3FFFA

 D34254

 D3FFFF

 D32C41

 D3172F

 D3021C

 D3001A

# Harmonies

## Analogous

The Analogous color harmony consists of three colors that are next to each other on the color wheel.



CCACBF



D3ABB0



D2ADA3

# Triad

The Triadic color harmony groups three colors that are evenly spaced from another and form a triangle on the color wheel.



D3ABB0



AABA9F



9BB9D0

# Complementary

The Complementary color scheme is a pair of colors which are on the opposite of each other on the color wheel.



D3ABB0



ABD3CE

# Split Complementary

Split-complementary colors differ from the complementary color scheme. The scheme consists of three colors, the original color and two neighbors of the complement color.



91BCC7



D3ABB0



9BBDAB

# Square

The Square scheme is like the rectangle color scheme, but the four colors are evenly spaced on the color wheel.



D3ABB0



BBB699



91BDBA



ACB4D1

# Rectangle

The Rectangle color scheme consists of four colors that form a rectangle on the color wheel.



D3ABB0



CDAF9C



91BDBA



96BACD



# Sweetspot

The Sweet Spot groups the original color and five complimentary colors.



D3ABB0



FFF0F2



CEABD3



807778



000000



808080



# Same Dimension

The Same Dimension uses a secret algorithm to generate beautiful new colors.



D3ABB0



FFC4CC



D3BAAB



695E5F



A80015



290005



# Inverse Universe

The Inverse Universe completely reimagines the original color for something new.



D3ABB0



FFC4CC



ABC4D3



695E5F



A80015

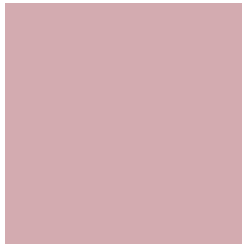


290005



# Previews

## White Background



This preview shows how the Hex color D3ABB0 looks on a white background.

## Color Contrast Check

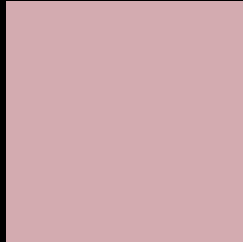
Large Text (above 18pt) WCAG AA × Fail

Any Text WCAG AA × Fail

Large Text (above 18pt) WCAG AAA × Fail

Any Text WCAG AAA × Fail

# Black Background



This preview shows how the Hex color D3ABB0 looks on a black background.

## Color Contrast Check

Large Text (above 18pt) WCAG AA ✓ Pass

Any Text WCAG AA ✓ Pass

Large Text (above 18pt) WCAG AAA ✓ Pass

Any Text WCAG AAA ✓ Pass

If you want to check with other color combinations, try the [Color Contrast Checker](#).



## Hex D3ABB0 Background



This preview shows how black text looks on a background with the Hex color D3ABB0.

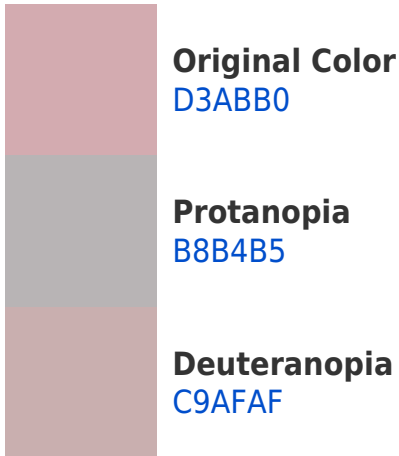


This preview shows how white text looks on a background with the Hex color D3ABB0.

# Color Blindness Simulation

Color vision deficiency is a very complex topic, and I could not describe the different causes any better than Wikipedia does, so if you want to learn more, you should check out their [article about color blindness](#).

## Dichromacy





**Tritanopia**  
D4AAB7

# Trichromacy



**Original Color**  
D3ABB0

**Protanomaly**  
C2B1B3

**Deuteranomaly**  
CDAEAF

**Tritanomaly**  
D4AAB4

# Monochromacy



**Original Color**  
D3ABB0

**Achromatopsia**  
B8B8B8

**Achromatomaly**  
C2B3B5

# CSS Examples

## Text

The CSS property to change the color of the text to Hex D3ABB0 is called "color". The color property can be set on classes, ids or directly on the HTML element.

This example shows how text in the color #D3ABB0 looks like.

```
.text, #text, p{  
    color:#D3ABB0  
}
```

If you want to add a text shadow in that color use the text-shadow property, you can generate a text shadow directly with our [CSS Text Shadow Generator](#).

Here you see how black text with a 4 pixel #D3ABB0 colored shadow looks like.

```
.shadow{ text-shadow: 4px 4px 2px #D3ABB0  
}
```

## Border

The CSS property to change the border of an element to Hex D3ABB0 is called "border". The border property can be set on classes, ids or directly on the HTML element.

This example shows the color as border, it can be applied via the CSS property "border" or "border-color".

```
.border, #border, table{ border:4px solid  
#D3ABB0 }
```

If only the border color should be changed use the property `border-color`.

```
.border{ border-color:#D3ABB0 }
```

If you want to add a box shadow in that color use:

Here you see how a box with a 4 pixel #D3ABB0 colored shadow looks like.

```
.boxshadow{ -moz-box-shadow:4px 4px 4px  
4px #D3ABB0; -webkit-box-shadow:4px 4px  
4px 4px #D3ABB0; box-shadow:4px 4px 4px  
4px #D3ABB0 }
```

# Background

The CSS property to change the background color of an element to Hex D3ABB0 is called "background". The background property can be set on classes, ids or directly on the HTML element.

```
.background, #background, body{  
background:#D3ABB0 }
```

If only the background color should be changed can be used:

```
.background{ background-color:#D3ABB0 }
```

This example shows the color as background, it is applied via the CSS property "background".

To optimize and compress your CSS code, you can use our [online CSS compressor and optimizer](#) based on csstidy. If you want to create a linear or radial gradient as background or border, check our [CSS Gradient Generator](#).



Hey! You found this booklet interesting? Support Converting Colors with the new Membership Option!

The pro membership hides all ads, plus gives you double the colors in the color bucket, and more awesome pro features!

**[Learn more, Memberships starting at \\$2.50/m!](#)**

**Follow me  
on Twitter!**

@ConvertingColor