

# Converting Colors

Hex(D3AC83)

Have a look what the booklet for  
Hex(D3AC83) contains.

<b>Hex(D3AC83)</b> .....	3
<b><i>Conversions</i></b> .....	4
<b><i>Details</i></b> .....	6
<b><i>Harmonies</i></b> .....	11
<b><i>Previews</i></b> .....	23
<b><i>Color Blindness Simulation</i></b> .....	26
<b><i>CSS Examples</i></b> .....	29

# **Color**

**Hex(D3AC83)**

# Conversions

## Conversions Part 1

Format	Color
Hex	D3AC83
RGB	211, 172, 131
RGB Percent	83%, 67%, 51%
CMY	0.1725, 0.3255, 0.4863
CMYK	0.00, 0.18, 0.38, 0.17
HSL	31°, 48%, 67%
HSV	31°, 38%, 83%
XYZ	45.7132, 44.9926, 27.7478
YIQ	178.9870, 36.4050, -4.4830

# Conversions

## Conversions Part 2

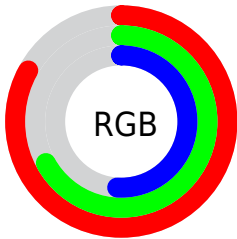
Format	Color
<b>R<sub>YB</sub></b>	207, 211, 131
Decimal	13872259
CIE Lab	72.89, 8.61, 26.45
CIE LCh	73, 27.820, 71.967
Yxy	44.9926, 0.3859, 0.3798
Android (android.graphics.Color)	4292062339 (0xFFD3AC83)
YUV	178.9870, -23.6576, 28.0754
Hunter-Lab	67.0765, 4.2653, 22.4268

# Details

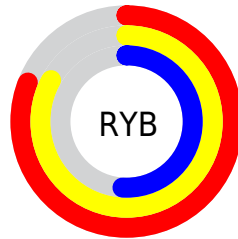
The Hex color **D3AC83** is a light color, and the websafe version is hex **CC9966**. A complement of this color would be **83AAD3**, and the grayscale version is **B3B3B3**.

A 20% lighter version of the original color is **FFE3B8**, and **9B7851** is the 20% darker color. If you saturate the color by 10%, you get **D3A26E**, and if you desaturate by 10%, it is **D3B698**.

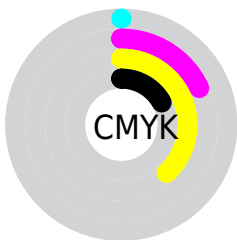
# Distribution



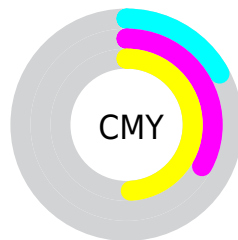
- Red (83%)
- Green (67%)
- Blue (51%)



- Red (81%)
- Yellow (83%)
- Blue (51%)



- Cyan (0%)
- Magenta (18%)
- Yellow (38%)
- Black (17%)



- Cyan (17%)
- Magenta (33%)
- Yellow (49%)

# Brightness & Saturation Gradients

These gradients show how the Hex color D3AC83 changes by changing the brightness by 10 percent. The first figure shows a shift by +10% for each color and the second figure -10%.

Similar to the brightness gradients but the following saturation gradients show a change of the Hex color D3AC83 by changing the saturation by 10% instead.



 D3AC83

 D3AC83

FFFFFF

 B7916A

 FFE3B8

 9B7851

 FFFFD4

 805F3A

 FFFFF1

 664723

 4C310E

 341C00

 1C0300

 000000

 D3AC83

 D3AC83

 D3A26E

 D3B698

 D39759

 D3C1AD

 D38D44

 D3CBC2

 D3832F

 D3D5D7

 D37919

 D3DFED

 D36E04

 D3EAFB

 D36C00

 D3F4FF

 D3FEFF

 D3FFFF

# Harmonies

## Analogous

The Analogous color harmony consists of three colors that are next to each other on the color wheel.



E3A492



D3AC83



BBB581

# Triad

The Triadic color harmony groups three colors that are evenly spaced from another and form a triangle on the color wheel.



D3AC83



6BC1BC



C4A9D9

# Complementary

The Complementary color scheme is a pair of colors which are on the opposite of each other on the color wheel.



D3AC83



83AAD3

# Split Complementary

Split-complementary colors differ from the complementary color scheme. The scheme consists of three colors, the original color and two neighbors of the complement color.



A2B2E4



D3AC83



68BFD4

# Square

The Square scheme is like the rectangle color scheme, but the four colors are evenly spaced on the color wheel.



D3AC83



81C0A2



7EBAE3



DCA2C3

# Rectangle

The Rectangle color scheme consists of four colors that form a rectangle on the color wheel.



D3AC83



A8B987



7EBAE3



B9ACDE



# Sweetspot

The Sweet Spot groups the original color and five complimentary colors.



D3AC83



FFF1E3



D383AB



80776F



000000



808080



# Same Dimension

The Same Dimension uses a secret algorithm to generate beautiful new colors.



D3AC83



FFC78C



D3D383



69635E



A85600



291500

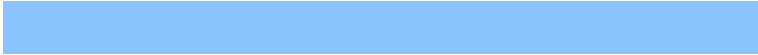


# Inverse Universe

The Inverse Universe completely reimagines the original color for something new.



83AAD3



8CC4FF



8383D3



5E6369



0052A8



001429



# Previews

## White Background



This preview shows how the Hex color D3AC83 looks on a white background.

## Color Contrast Check

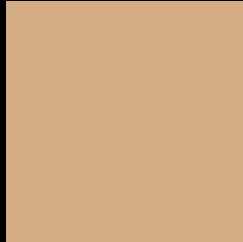
Large Text (above 18pt) WCAG AA × Fail

Any Text WCAG AA × Fail

Large Text (above 18pt) WCAG AAA × Fail

Any Text WCAG AAA × Fail

# Black Background



This preview shows how the Hex color D3AC83 looks on a black background.

## Color Contrast Check

Large Text (above 18pt) WCAG AA ✓ Pass

Any Text WCAG AA ✓ Pass

Large Text (above 18pt) WCAG AAA ✓ Pass

Any Text WCAG AAA ✓ Pass

If you want to check with other color combinations, try the [Color Contrast Checker](#).



## Hex D3AC83 Background



This preview shows how black text looks on a background with the Hex color D3AC83.

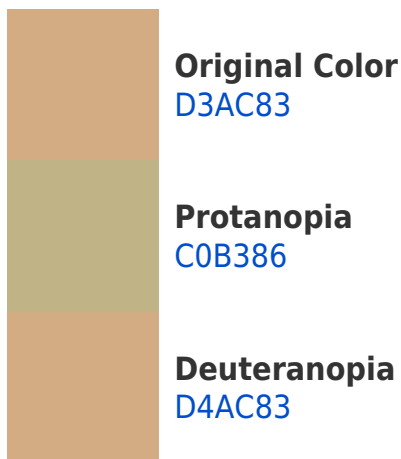


This preview shows how white text looks on a background with the Hex color D3AC83.

# Color Blindness Simulation

Color vision deficiency is a very complex topic, and I could not describe the different causes any better than Wikipedia does, so if you want to learn more, you should check out their [article about color blindness](#).

## Dichromacy



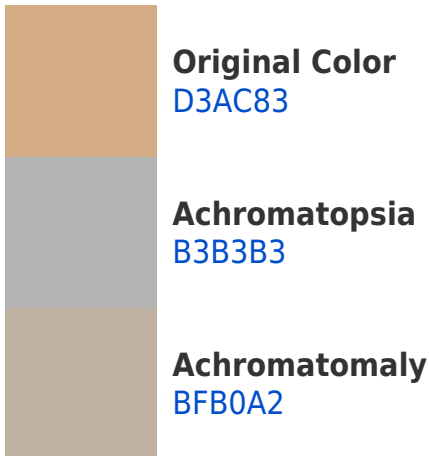


**Tritanopia**  
D8A6B2

# Trichromacy



# Monochromacy



# CSS Examples

## Text

The CSS property to change the color of the text to Hex D3AC83 is called "color". The color property can be set on classes, ids or directly on the HTML element.

This example shows how text in the color #D3AC83 looks like.

```
.text, #text, p{  
    color:#D3AC83  
}
```

If you want to add a text shadow in that color use the text-shadow property, you can generate a text shadow directly with our [CSS Text Shadow Generator](#).

Here you see how black text with a 4 pixel #D3AC83 colored shadow looks like.

```
.shadow{ text-shadow: 4px 4px 2px #D3AC83
}
```

## Border

The CSS property to change the border of an element to Hex D3AC83 is called "border". The border property can be set on classes, ids or directly on the HTML element.

This example shows the color as border, it can be applied via the CSS property "border" or "border-color".

```
.border, #border, table{ border:4px solid
#D3AC83 }
```

If only the border color should be changed use the property `border-color`.

```
.border{ border-color:#D3AC83 }
```

If you want to add a box shadow in that color use:

Here you see how a box with a 4 pixel #D3AC83 colored shadow looks like.

```
.boxshadow{ -moz-box-shadow:4px 4px 4px  
4px #D3AC83; -webkit-box-shadow:4px 4px  
4px 4px #D3AC83; box-shadow:4px 4px 4px  
4px #D3AC83 }
```

# Background

The CSS property to change the background color of an element to Hex D3AC83 is called "background". The background property can be set on classes, ids or directly on the HTML element.

```
.background, #background, body{  
background:#D3AC83 }
```

If only the background color should be changed can be used:

```
.background{ background-color:#D3AC83 }
```

This example shows the color as background, it is applied via the CSS property "background".

To optimize and compress your CSS code, you can use our [online CSS compressor and optimizer](#) based on csstidy. If you want to create a linear or radial gradient as background or border, check our [CSS Gradient Generator](#).



Hey! You found this booklet interesting? Support Converting Colors with the new Membership Option!

The pro membership hides all ads, plus gives you double the colors in the color bucket, and more awesome pro features!

**[Learn more, Memberships starting at \\$2.50/m!](#)**

**Follow me  
on Twitter!**

@ConvertingColor