

# Converting Colors

Hex(D3AFB9)

Have a look what the booklet for  
Hex(D3AFB9) contains.

<b>Hex(D3AFB9)</b> .....	3
<i><b>Conversions</b></i> .....	4
<i><b>Details</b></i> .....	6
<i><b>Harmonies</b></i> .....	11
<i><b>Previews</b></i> .....	23
<i><b>Color Blindness Simulation</b></i> .....	26
<i><b>CSS Examples</b></i> .....	29

# **Color**

**Hex(D3AFB9)**

# Conversions

## Conversions Part 1

Format	Color
Hex	D3AFB9
RGB	211, 175, 185
RGB Percent	83%, 69%, 73%
CMY	0.1725, 0.3137, 0.2745
CMYK	0.00, 0.17, 0.12, 0.17
HSL	343°, 29%, 76%
HSV	343°, 17%, 83%
XYZ	50.9509, 48.0116, 52.4807
YIQ	186.9040, 18.2460, 10.7420

# Conversions

## Conversions Part 2

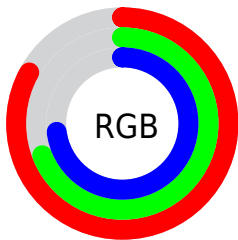
<b>Format</b>	<b>Color</b>
R <sub>Y</sub> B	211, 175, 185
Decimal	13873081
CIE Lab	74.83, 14.65, -0.20
CIE LCh	75, 14.653, 359.204
Yxy	48.0116, 0.3364, 0.3170
Android (android.graphics.Color)	4292063161 (0xFFD3AFB9)
YUV	186.9040, -0.9387, 21.1322
Hunter-Lab	69.2904, 9.9971, 3.5969

# Details

The Hex color **D3AFB9** is a light color, and the websafe version is hex **CC9999**. A complement of this color would be **AFD3C9**, and the grayscale version is **BBBBBB**.

A 20% lighter version of the original color is **FFE7F1**, and **9C7A84** is the 20% darker color. If you saturate the color by 10%, you get **D39AAA**, and if you desaturate by 10%, it is **D3C4C8**.

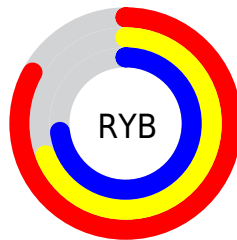
# Distribution



Red (83%)

Green (69%)

Blue (73%)



Red (83%)

Yellow (69%)

Blue (73%)

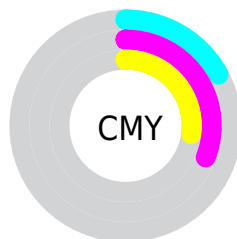


Cyan (0%)

Magenta (17%)

Yellow (12%)

Black (17%)



Cyan (17%)

Magenta (31%)

Yellow (27%)

# Brightness & Saturation Gradients

These gradients show how the Hex color D3AFB9 changes by changing the brightness by 10 percent. The first figure shows a shift by +10% for each color and the second figure -10%.

Similar to the brightness gradients but the following saturation gradients show a change of the Hex color D3AFB9 by changing the saturation by 10% instead.



 D3AFB9

 D3AFB9

FFFFFF

 B7949E

 FFE7F1

 9C7A84

 82616B

 684A53

 50333C

 381D26

 230611

 000000

 D3AFB9

 D3AFB9

 D39AAA

 D3C4C8

 D3859B

 D3D9D7

 D3708B

 D3EEE7

 D35B7C

 D3FFF6

 D3466D

 D3FFFF

 D3305E

 D31B4E

 D3063F

 D3003B

# Harmonies

## Analogous

The Analogous color harmony consists of three colors that are next to each other on the color wheel.



CAB1C6



D3AFB9



D5B0AC

# Triad

The Triadic color harmony groups three colors that are evenly spaced from another and form a triangle on the color wheel.



D3AFB9



B5BBA1



9BBDCF

# Complementary

The Complementary color scheme is a pair of colors which are on the opposite of each other on the color wheel.



D3AFB9



AFD3C9

# Split Complementary

Split-complementary colors differ from the complementary color scheme. The scheme consists of three colors, the original color and two neighbors of the complement color.



95C0C5



D3AFB9



A5BFAA

# Square

The Square scheme is like the rectangle color scheme, but the four colors are evenly spaced on the color wheel.



D3AFB9



C4B79D



9AC0B7



A9B9D3

# Rectangle

The Rectangle color scheme consists of four colors that form a rectangle on the color wheel.



D3AFB9



D2B2A4



9AC0B7



98BECC



# Sweetspot

The Sweet Spot groups the original color and five complimentary colors.



D3AFB9



FFF2F6



C9AFD3



80787A



000000



808080



# Same Dimension

The Same Dimension uses a secret algorithm to generate beautiful new colors.



D3AFB9



FFCCDA



D3B7AF



695E61



A8002F



29000B



# Inverse Universe

The Inverse Universe completely reimagines the original color for something new.



D3AFB9



FFCCDA



AFCBD3



695E61



A8002F

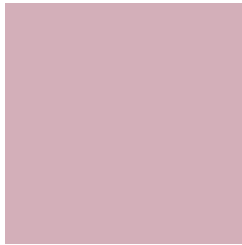


29000B



# Previews

## White Background



This preview shows how the Hex color D3AFB9 looks on a white background.

## Color Contrast Check

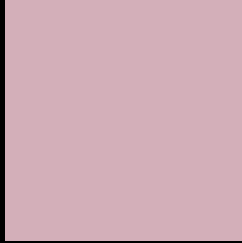
Large Text (above 18pt) WCAG AA × Fail

Any Text WCAG AA × Fail

Large Text (above 18pt) WCAG AAA × Fail

Any Text WCAG AAA × Fail

# Black Background



This preview shows how the Hex color D3AFB9 looks on a black background.

## Color Contrast Check

Large Text (above 18pt) WCAG AA ✓ Pass

Any Text WCAG AA ✓ Pass

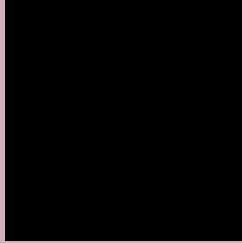
Large Text (above 18pt) WCAG AAA ✓ Pass

Any Text WCAG AAA ✓ Pass

If you want to check with other color combinations, try the [Color Contrast Checker](#).



## Hex D3AFB9 Background



This preview shows how black text looks on a background with the Hex color D3AFB9.

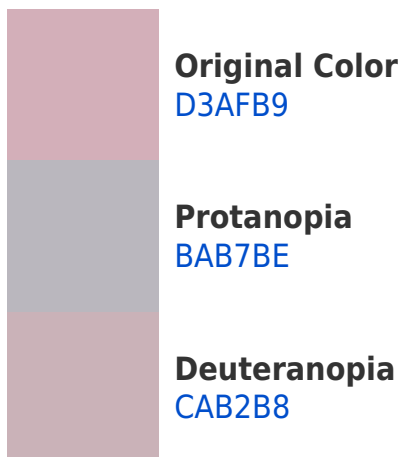


This preview shows how white text looks on a background with the Hex color D3AFB9.

# Color Blindness Simulation

Color vision deficiency is a very complex topic, and I could not describe the different causes any better than Wikipedia does, so if you want to learn more, you should check out their [article about color blindness](#).

## Dichromacy





**Tritanopia**  
D3AFBC

# Trichromacy



**Original Color**  
D3AFB9

**Protanomaly**  
C3B4BC

**Deuteranomaly**  
CDB1B8

**Tritanomaly**  
D3AFBB

# Monochromacy



**Original Color**  
D3AFB9

**Achromatopsia**  
BBBBBB

**Achromatomaly**  
C4B7BA

# CSS Examples

## Text

The CSS property to change the color of the text to Hex D3AFB9 is called "color". The color property can be set on classes, ids or directly on the HTML element.

This example shows how text in the color #D3AFB9 looks like.

```
.text, #text, p{  
    color:#D3AFB9  
}
```

If you want to add a text shadow in that color use the text-shadow property, you can generate a text shadow directly with our [CSS Text Shadow Generator](#).

Here you see how black text with a 4 pixel #D3AFB9 colored shadow looks like.

```
.shadow{ text-shadow: 4px 4px 2px #D3AFB9
}
```

## Border

The CSS property to change the border of an element to Hex D3AFB9 is called "border". The border property can be set on classes, ids or directly on the HTML element.

This example shows the color as border, it can be applied via the CSS property "border" or "border-color".

```
.border, #border, table{ border:4px solid
#D3AFB9 }
```

If only the border color should be changed use the property `border-color`.

```
.border{ border-color:#D3AFB9 }
```

If you want to add a box shadow in that color use:

Here you see how a box with a 4 pixel #D3AFB9 colored shadow looks like.

```
.boxshadow{ -moz-box-shadow:4px 4px 4px  
4px #D3AFB9; -webkit-box-shadow:4px 4px  
4px 4px #D3AFB9; box-shadow:4px 4px 4px  
4px #D3AFB9 }
```

# Background

The CSS property to change the background color of an element to Hex D3AFB9 is called "background". The background property can be set on classes, ids or directly on the HTML element.

```
.background, #background, body{  
background:#D3AFB9 }
```

If only the background color should be changed can be used:

```
.background{ background-color:#D3AFB9 }
```

This example shows the color as background, it is applied via the CSS property "background".

To optimize and compress your CSS code, you can use our [online CSS compressor and optimizer](#) based on csstidy. If you want to create a linear or radial gradient as background or border, check our [CSS Gradient Generator](#).



Hey! You found this booklet interesting? Support Converting Colors with the new Membership Option!

The pro membership hides all ads, plus gives you double the colors in the color bucket, and more awesome pro features!

**[Learn more, Memberships starting at \\$2.50/m!](#)**

**Follow me  
on Twitter!**

@ConvertingColor