

Converting Colors

Hex(D3B2A4)

Have a look what the booklet for
Hex(D3B2A4) contains.

Hex(D3B2A4)	3
<i>Conversions</i>	4
<i>Details</i>	6
<i>Harmonies</i>	11
<i>Previews</i>	23
<i>Color Blindness Simulation</i>	26
<i>CSS Examples</i>	29

Color

Hex(D3B2A4)

Conversions

Conversions Part 1

Format	Color
Hex	D3B2A4
RGB	211, 178, 164
RGB Percent	83%, 70%, 64%
CMY	0.1725, 0.3020, 0.3569
CMYK	0.00, 0.16, 0.22, 0.17
HSL	18°, 35%, 74%
HSV	18°, 22%, 83%
XYZ	49.4852, 48.3700, 41.8502
YIQ	186.2710, 24.1620, 2.6420

Conversions

Conversions Part 2

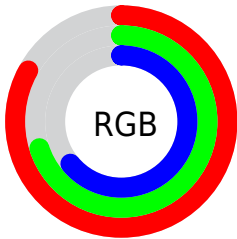
Format	Color
RYB	211, 184, 164
Decimal	13873828
CIELab	75.06, 9.75, 11.58
CIELCh	75, 15.137, 49.915
Yxy	48.3700, 0.3542, 0.3462
Android (android.graphics.Color)	4292063908 (0xFFD3B2A4)
YUV	186.2710, -10.9796, 21.6873
Hunter-Lab	69.5486, 5.2964, 13.0068

Details

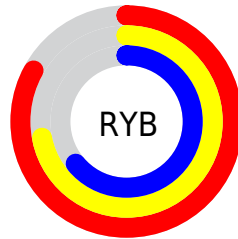
The Hex color **D3B2A4** is a light color, and the websafe version is hex **CC9999**. A complement of this color would be **A4C5D3**, and the grayscale version is **BABABA**.

A 20% lighter version of the original color is **FFEADB**, and **9C7D70** is the 20% darker color. If you saturate the color by 10%, you get **D3A38F**, and if you desaturate by 10%, it is **D3C1B9**.

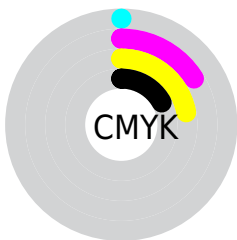
Distribution



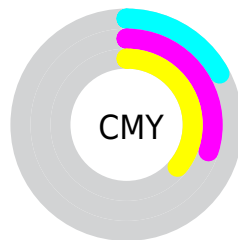
- Red (83%)
- Green (70%)
- Blue (64%)



- Red (83%)
- Yellow (72%)
- Blue (64%)



- Cyan (0%)
- Magenta (16%)
- Yellow (22%)
- Black (17%)



- Cyan (17%)
- Magenta (30%)
- Yellow (36%)

Brightness & Saturation Gradients

These gradients show how the Hex color D3B2A4 changes by changing the brightness by 10 percent. The first figure shows a shift by +10% for each color and the second figure -10%.

Similar to the brightness gradients but the following saturation gradients show a change of the Hex color D3B2A4 by changing the saturation by 10% instead.



D3B2A4



D3B2A4

FFFFFF



B7978A



FFEADB



9C7D70



FFFFF7



816458



684C40



4F362A



372016



220A00



000000



D3B2A4



D3B2A4

 D3A38F

 D3C1B9

 D3947A

 D3D0CE

 D38665

 D3DEE3

 D37750

 D3EDF8

 D3683B

 D3FCFF

 D35925

 D3FFFF

 D34A10

 D33F00

Harmonies

Analogous

The Analogous color harmony consists of three colors that are next to each other on the color wheel.



D7B0B0



D3B2A4



C9B69E

Triad

The Triadic color harmony groups three colors that are evenly spaced from another and form a triangle on the color wheel.



D3B2A4



9CC1B3



B6B7D3

Complementary

The Complementary color scheme is a pair of colors which are on the opposite of each other on the color wheel.



D3B2A4



A4C5D3

Split Complementary

Split-complementary colors differ from the complementary color scheme. The scheme consists of three colors, the original color and two neighbors of the complement color.



A4BBD4



D3B2A4



95C1C2

Square

The Square scheme is like the rectangle color scheme, but the four colors are evenly spaced on the color wheel.



D3B2A4



AABFA7



98BFCE



C6B2CB

Rectangle

The Rectangle color scheme consists of four colors that form a rectangle on the color wheel.



D3B2A4



BFB99D



98BFCE



B0B8D4

Sweetspot

The Sweet Spot groups the original color and five complimentary colors.



D3B2A4



FFF2ED



D3A4C6



807875



000000



808080

Same Dimension

The Same Dimension uses a secret algorithm to generate beautiful new colors.



D3B2A4



FFCFBA



D3C9A4



69615E



A83200



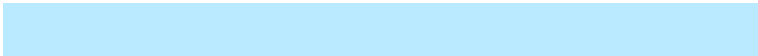
290C00

Inverse Universe

The Inverse Universe completely reimagines the original color for something new.



A4C5D3



BAEAFB



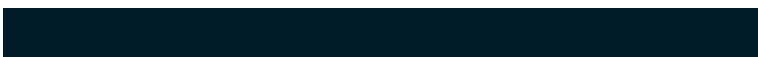
A4AED3



5E6569



0076A8



001D29

Previews

White Background



This preview shows how the Hex color D3B2A4 looks on a white background.

Color Contrast Check

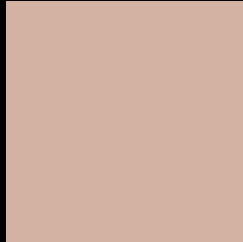
Large Text (above 18pt) WCAG AA × Fail

Any Text WCAG AA × Fail

Large Text (above 18pt) WCAG AAA × Fail

Any Text WCAG AAA × Fail

Black Background



This preview shows how the Hex color D3B2A4 looks on a black background.

Color Contrast Check

Large Text (above 18pt) WCAG AA ✓ Pass

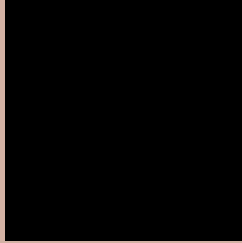
Any Text WCAG AA ✓ Pass

Large Text (above 18pt) WCAG AAA ✓ Pass

Any Text WCAG AAA ✓ Pass

If you want to check with other color combinations, try the [Color Contrast Checker](#).

Hex D3B2A4 Background



This preview shows how black text looks on a background with the Hex color D3B2A4.



This preview shows how white text looks on a background with the Hex color D3B2A4.

Color Blindness Simulation

Color vision deficiency is a very complex topic, and I could not describe the different causes any better than Wikipedia does, so if you want to learn more, you should check out their [article about color blindness](#).

Dichromacy



Original Color
D3B2A4

Protanopia
C0B8A7

Deuteranopia
D2B2A4



Tritanopia
D6AEBC

Trichromacy



Monochromacy



CSS Examples

Text

The CSS property to change the color of the text to Hex D3B2A4 is called "color". The color property can be set on classes, ids or directly on the HTML element.

This example shows how text in the color #D3B2A4 looks like.

```
.text, #text, p{  
    color:#D3B2A4  
}
```

If you want to add a text shadow in that color use the text-shadow property, you can generate a text shadow directly with our [CSS Text Shadow Generator](#).

Here you see how black text with a 4 pixel #D3B2A4 colored shadow looks like.

```
.shadow{ text-shadow: 4px 4px 2px #D3B2A4
}
```

Border

The CSS property to change the border of an element to Hex D3B2A4 is called "border". The border property can be set on classes, ids or directly on the HTML element.

This example shows the color as border, it can be applied via the CSS property "border" or "border-color".

```
.border, #border, table{ border:4px solid
#D3B2A4 }
```

If only the border color should be changed use the property `border-color`.

```
.border{ border-color:#D3B2A4 }
```

If you want to add a box shadow in that color use:

Here you see how a box with a 4 pixel #D3B2A4 colored shadow looks like.

```
.boxshadow{ -moz-box-shadow:4px 4px 4px  
4px #D3B2A4; -webkit-box-shadow:4px 4px  
4px 4px #D3B2A4; box-shadow:4px 4px 4px  
4px #D3B2A4 }
```

Background

The CSS property to change the background color of an element to Hex D3B2A4 is called "background". The background property can be set on classes, ids or directly on the HTML element.

```
.background, #background, body{  
background:#D3B2A4 }
```

If only the background color should be changed can be used:

```
.background{ background-color:#D3B2A4 }
```

This example shows the color as background, it is applied via the CSS property "background".

To optimize and compress your CSS code, you can use our [online CSS compressor and optimizer](#) based on csstidy. If you want to create a linear or radial gradient as background or border, check our [CSS Gradient Generator](#).

Hey! You found this booklet interesting? Support Converting Colors with the new Membership Option!

The pro membership hides all ads, plus gives you double the colors in the color bucket, and more awesome pro features!

[Learn more, Memberships starting at \\$2.50/m!](#)

**Follow me
on Twitter!**

@ConvertingColor