

# Converting Colors

Hex(D3B3A5)

Have a look what the booklet for  
Hex(D3B3A5) contains.

<b>Hex(D3B3A5)</b> .....	3
<i><b>Conversions</b></i> .....	4
<i><b>Details</b></i> .....	6
<i><b>Harmonies</b></i> .....	11
<i><b>Previews</b></i> .....	23
<i><b>Color Blindness Simulation</b></i> .....	26
<i><b>CSS Examples</b></i> .....	29

# **Color**

**Hex(D3B3A5)**

# Conversions

## Conversions Part 1

Format	Color
Hex	D3B3A5
RGB	211, 179, 165
RGB Percent	83%, 70%, 65%
CMY	0.1725, 0.2980, 0.3529
CMYK	0.00, 0.15, 0.22, 0.17
HSL	18°, 34%, 74%
HSV	18°, 22%, 83%
XYZ	49.7756, 48.8057, 42.3943
YIQ	186.9720, 23.5660, 2.4300

# Conversions

## Conversions Part 2

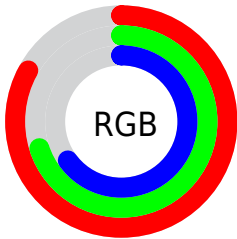
<b>Format</b>	<b>Color</b>
R <sub>Y</sub> B	211, 185, 165
Decimal	13874085
CIE Lab	75.33, 9.36, 11.42
CIE LCh	75, 14.767, 50.678
Yxy	48.8057, 0.3531, 0.3462
Android (android.graphics.Color)	4292064165 (0xFFD3B3A5)
YUV	186.9720, -10.8322, 21.0726
Hunter-Lab	69.8611, 4.9233, 12.9234

# Details

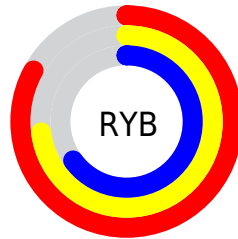
The Hex color **D3B3A5** is a light color, and the websafe version is hex **CC9999**. A complement of this color would be **A5C5D3**, and the grayscale version is **BBBBBB**.

A 20% lighter version of the original color is **FFEBDC**, and **9C7E71** is the 20% darker color. If you saturate the color by 10%, you get **D3A490**, and if you desaturate by 10%, it is **D3C2BA**.

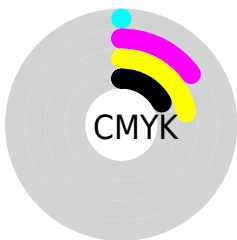
# Distribution



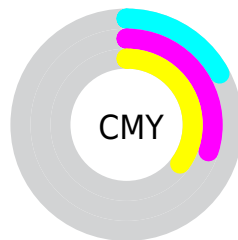
- Red (83%)
- Green (70%)
- Blue (65%)



- Red (83%)
- Yellow (73%)
- Blue (65%)



- Cyan (0%)
- Magenta (15%)
- Yellow (22%)
- Black (17%)



- Cyan (17%)
- Magenta (30%)
- Yellow (35%)

# Brightness & Saturation Gradients

These gradients show how the Hex color D3B3A5 changes by changing the brightness by 10 percent. The first figure shows a shift by +10% for each color and the second figure -10%.

Similar to the brightness gradients but the following saturation gradients show a change of the Hex color D3B3A5 by changing the saturation by 10% instead.



 D3B3A5

 D3B3A5

FFFFFF

 B7988B

 FFEBDC

 9C7E71

 FFFFF9

 816559

 684D41

 4F362B

 372117

 230B00

 000000

 D3B3A5

 D3B3A5

 D3A490

 D3C2BA

 D3967B

 D3D0CF

 D38766

 D3DFE4

 D37851

 D3EEF9

 D36A3C

 D3FCFF

 D35B26

 D3FFFF

 D34C11

 D34000

# Harmonies

## Analogous

The Analogous color harmony consists of three colors that are next to each other on the color wheel.



D7B1B0



D3B3A5



C9B79F

# Triad

The Triadic color harmony groups three colors that are evenly spaced from another and form a triangle on the color wheel.



D3B3A5



9DC1B5



B7B7D3

# Complementary

The Complementary color scheme is a pair of colors which are on the opposite of each other on the color wheel.



D3B3A5



A5C5D3

# Split Complementary

Split-complementary colors differ from the complementary color scheme. The scheme consists of three colors, the original color and two neighbors of the complement color.



A6BCD4



D3B3A5



97C1C3

# Square

The Square scheme is like the rectangle color scheme, but the four colors are evenly spaced on the color wheel.



D3B3A5



ABBFA8



9AC0CE



C7B3CB

# Rectangle

The Rectangle color scheme consists of four colors that form a rectangle on the color wheel.



D3B3A5



BFBA9F



9AC0CE



B1B9D4



# Sweetspot

The Sweet Spot groups the original color and five complimentary colors.



D3B3A5



FFF3ED



D3A5C5



807875



000000



808080



# Same Dimension

The Same Dimension uses a secret algorithm to generate beautiful new colors.



D3B3A5



FFD1BD



D3CAA5



69615E



A83300



290C00

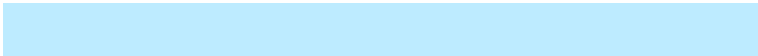


# Inverse Universe

The Inverse Universe completely reimagines the original color for something new.



A5C5D3



BDEBFF



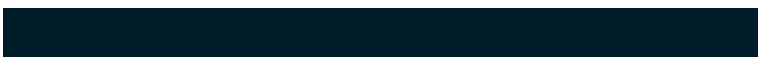
A5AED3



5E6569



0075A8



001C29



# Previews

## White Background



This preview shows how the Hex color D3B3A5 looks on a white background.

## Color Contrast Check

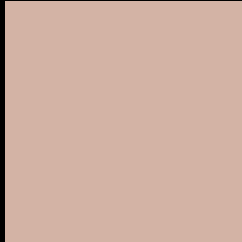
Large Text (above 18pt) WCAG AA × Fail

Any Text WCAG AA × Fail

Large Text (above 18pt) WCAG AAA × Fail

Any Text WCAG AAA × Fail

# Black Background



This preview shows how the Hex color D3B3A5 looks on a black background.

## Color Contrast Check

Large Text (above 18pt) WCAG AA ✓ Pass

Any Text WCAG AA ✓ Pass

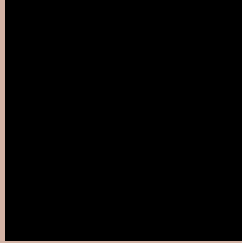
Large Text (above 18pt) WCAG AAA ✓ Pass

Any Text WCAG AAA ✓ Pass

If you want to check with other color combinations, try the [Color Contrast Checker](#).



## Hex D3B3A5 Background



This preview shows how black text looks on a background with the Hex color D3B3A5.

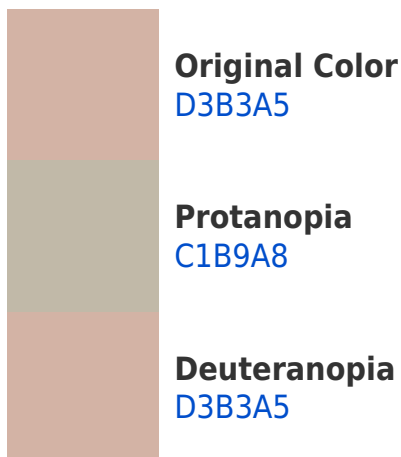


This preview shows how white text looks on a background with the Hex color D3B3A5.

# Color Blindness Simulation

Color vision deficiency is a very complex topic, and I could not describe the different causes any better than Wikipedia does, so if you want to learn more, you should check out their [article about color blindness](#).

## Dichromacy





**Tritanopia**  
D6AFBD

# Trichromacy



**Original Color**  
D3B3A5

**Protanomaly**  
C8B7A7

**Deuteranomaly**  
D3B3A5

**Tritanomaly**  
D5B0B4

# Monochromacy



**Original Color**  
D3B3A5

**Achromatopsia**  
BBBBBB

**Achromatomaly**  
C4B8B3

# CSS Examples

## Text

The CSS property to change the color of the text to Hex D3B3A5 is called "color". The color property can be set on classes, ids or directly on the HTML element.

This example shows how text in the color #D3B3A5 looks like.

```
.text, #text, p{  
    color:#D3B3A5  
}
```

If you want to add a text shadow in that color use the text-shadow property, you can generate a text shadow directly with our [CSS Text Shadow Generator](#).

Here you see how black text with a 4 pixel #D3B3A5 colored shadow looks like.

```
.shadow{ text-shadow: 4px 4px 2px #D3B3A5
}
```

## Border

The CSS property to change the border of an element to Hex D3B3A5 is called "border". The border property can be set on classes, ids or directly on the HTML element.

This example shows the color as border, it can be applied via the CSS property "border" or "border-color".

```
.border, #border, table{ border:4px solid
#D3B3A5 }
```

If only the border color should be changed use the property `border-color`.

```
.border{ border-color:#D3B3A5 }
```

If you want to add a box shadow in that color use:

Here you see how a box with a 4 pixel #D3B3A5 colored shadow looks like.

```
.boxshadow{ -moz-box-shadow:4px 4px 4px  
4px #D3B3A5; -webkit-box-shadow:4px 4px  
4px 4px #D3B3A5; box-shadow:4px 4px 4px  
4px #D3B3A5 }
```

# Background

The CSS property to change the background color of an element to Hex D3B3A5 is called "background". The background property can be set on classes, ids or directly on the HTML element.

```
.background, #background, body{  
background:#D3B3A5 }
```

If only the background color should be changed can be used:

```
.background{ background-color:#D3B3A5 }
```

This example shows the color as background, it is applied via the CSS property "background".

To optimize and compress your CSS code, you can use our [online CSS compressor and optimizer](#) based on csstidy. If you want to create a linear or radial gradient as background or border, check our [CSS Gradient Generator](#).



Hey! You found this booklet interesting? Support Converting Colors with the new Membership Option!

The pro membership hides all ads, plus gives you double the colors in the color bucket, and more awesome pro features!

**[Learn more, Memberships starting at \\$2.50/m!](#)**

**Follow me  
on Twitter!**

@ConvertingColor