

Converting Colors

Hex(D3B3AE)

Have a look what the booklet for
Hex(D3B3AE) contains.

Hex(D3B3AE)	3
<i>Conversions</i>	4
<i>Details</i>	6
<i>Harmonies</i>	11
<i>Previews</i>	23
<i>Color Blindness Simulation</i>	26
<i>CSS Examples</i>	29

Color

Hex(D3B3AE)

Conversions

Conversions Part 1

Format	Color
Hex	D3B3AE
RGB	211, 179, 174
RGB Percent	83%, 70%, 68%
CMY	0.1725, 0.2980, 0.3176
CMYK	0.00, 0.15, 0.18, 0.17
HSL	8°, 30%, 75%
HSV	8°, 18%, 83%
XYZ	50.6240, 49.1451, 46.8622
YIQ	187.9980, 20.6770, 5.2290

Conversions

Conversions Part 2

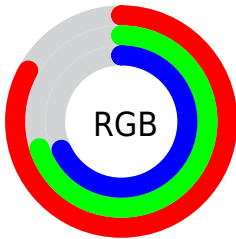
Format	Color
R _Y B	211, 180, 174
Decimal	13874094
CIE Lab	75.54, 10.72, 6.83
CIE LCh	76, 12.713, 32.483
Yxy	49.1451, 0.3452, 0.3352
Android (android.graphics.Color)	4292064174 (0xFFD3B3AE)
YUV	187.9980, -6.9010, 20.1728
Hunter-Lab	70.1035, 6.2194, 9.4389

Details

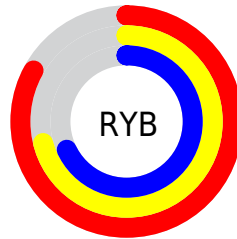
The Hex color **D3B3AE** is a light color, and the websafe version is hex **CC9999**. A complement of this color would be **AECED3**, and the grayscale version is **BCBCBC**.

A 20% lighter version of the original color is **FFEBE5**, and **9C7E7A** is the 20% darker color. If you saturate the color by 10%, you get **D3A199**, and if you desaturate by 10%, it is **D3C5C3**.

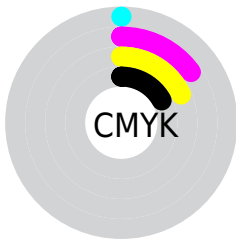
Distribution



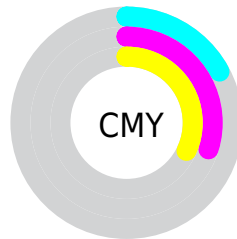
- Red (83%)
- Green (70%)
- Blue (68%)



- Red (83%)
- Yellow (71%)
- Blue (68%)



- Cyan (0%)
- Magenta (15%)
- Yellow (18%)
- Black (17%)



- Cyan (17%)
- Magenta (30%)
- Yellow (32%)

Brightness & Saturation Gradients

These gradients show how the Hex color D3B3AE changes by changing the brightness by 10 percent. The first figure shows a shift by +10% for each color and the second figure -10%.

Similar to the brightness gradients but the following saturation gradients show a change of the Hex color D3B3AE by changing the saturation by 10% instead.

 D3B3AE

 D3B3AE

FFFFFF

 B79893

 FFEBE5

 9C7E7A

 826561

 684D49

 503633

 38211E

 230B04

 000000

 D3B3AE

 D3B3AE

 D3A199

 D3C5C3

 D38F84

 D3D7D8

 D37C6F

 D3EAED

 D36A5A

 D3FCFF

 D35845

 D3FFFF

 D3462F

 D3331A

 D32105

 D31D00

Harmonies

Analogous

The Analogous color harmony consists of three colors that are next to each other on the color wheel.



D2B2B9



D3B3AE



CDB6A6

Triad

The Triadic color harmony groups three colors that are evenly spaced from another and form a triangle on the color wheel.



D3B3AE



A8C0AF



AFBBD1

Complementary

The Complementary color scheme is a pair of colors which are on the opposite of each other on the color wheel.



D3B3AE



AECED3

Split Complementary

Split-complementary colors differ from the complementary color scheme. The scheme consists of three colors, the original color and two neighbors of the complement color.



A2BECE



D3B3AE



9FC1BB

Square

The Square scheme is like the rectangle color scheme, but the four colors are evenly spaced on the color wheel.



D3B3AE



B6BDA6



9DC1C6



BEB7CE

Rectangle

The Rectangle color scheme consists of four colors that form a rectangle on the color wheel.



D3B3AE



C7B8A3



9DC1C6



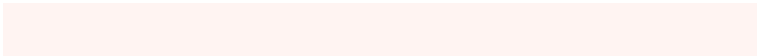
AABCD1

Sweetspot

The Sweet Spot groups the original color and five complimentary colors.



D3B3AE



FFF4F2



D3AECE



807978



000000



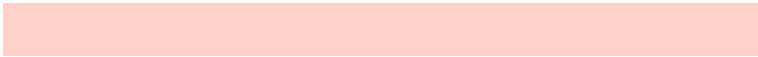
808080

Same Dimension

The Same Dimension uses a secret algorithm to generate beautiful new colors.



D3B3AE



FFD1C9



D3C5AE



69605E



A81700



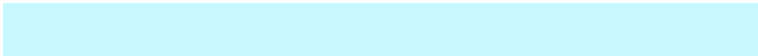
290600

Inverse Universe

The Inverse Universe completely reimagines the original color for something new.



AECED3



C9F8FF



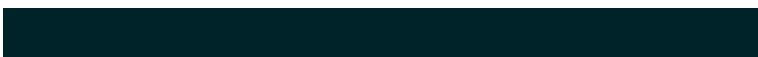
AEBCD3



5E6769



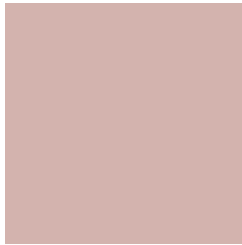
0092A8



002329

Previews

White Background



This preview shows how the Hex color D3B3AE looks on a white background.

Color Contrast Check

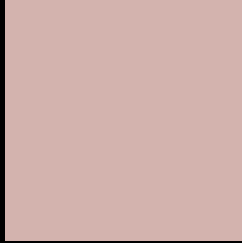
Large Text (above 18pt) WCAG AA × Fail

Any Text WCAG AA × Fail

Large Text (above 18pt) WCAG AAA × Fail

Any Text WCAG AAA × Fail

Black Background



This preview shows how the Hex color D3B3AE looks on a black background.

Color Contrast Check

Large Text (above 18pt) WCAG AA ✓ Pass

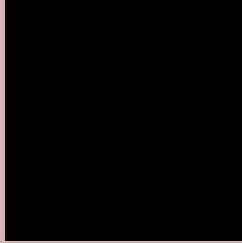
Any Text WCAG AA ✓ Pass

Large Text (above 18pt) WCAG AAA ✓ Pass

Any Text WCAG AAA ✓ Pass

If you want to check with other color combinations, try the [Color Contrast Checker](#).

Hex D3B3AE Background



This preview shows how black text looks on a background with the Hex color D3B3AE.



This preview shows how white text looks on a background with the Hex color D3B3AE.

Color Blindness Simulation

Color vision deficiency is a very complex topic, and I could not describe the different causes any better than Wikipedia does, so if you want to learn more, you should check out their [article about color blindness](#).

Dichromacy



Original Color
D3B3AE

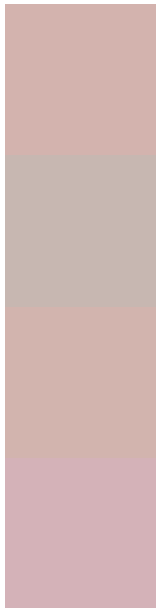
Protanopia
C0BAB2

Deuteranopia
D1B4AE



Tritanopia
D5B1BE

Trichromacy



Original Color
D3B3AE

Protanomaly
C7B7B1

Deuteranomaly
D2B4AE

Tritanomaly
D4B2B8

Monochromacy



Original Color
D3B3AE

Achromatopsia
BCBCBC

Achromatomaly
C4B9B7

CSS Examples

Text

The CSS property to change the color of the text to Hex D3B3AE is called "color". The color property can be set on classes, ids or directly on the HTML element.

This example shows how text in the color #D3B3AE looks like.

```
.text, #text, p{  
  color:#D3B3AE  
}
```

If you want to add a text shadow in that color use the text-shadow property, you can generate a text shadow directly with our [CSS Text Shadow Generator](#).

Here you see how black text with a 4 pixel #D3B3AE colored shadow looks like.

```
.shadow{ text-shadow: 4px 4px 2px #D3B3AE
}
```

Border

The CSS property to change the border of an element to Hex D3B3AE is called "border". The border property can be set on classes, ids or directly on the HTML element.

This example shows the color as border, it can be applied via the CSS property "border" or "border-color".

```
.border, #border, table{ border:4px solid
#D3B3AE }
```

If only the border color should be changed use the property `border-color`.

```
.border{ border-color:#D3B3AE }
```

If you want to add a box shadow in that color use:

Here you see how a box with a 4 pixel #D3B3AE colored shadow looks like.

```
.boxshadow{ -moz-box-shadow:4px 4px 4px  
4px #D3B3AE; -webkit-box-shadow:4px 4px  
4px 4px #D3B3AE; box-shadow:4px 4px 4px  
4px #D3B3AE }
```

Background

The CSS property to change the background color of an element to Hex D3B3AE is called "background". The background property can be set on classes, ids or directly on the HTML element.

```
.background, #background, body{  
background:#D3B3AE }
```

If only the background color should be changed can be used:

```
.background{ background-color:#D3B3AE }
```

This example shows the color as background, it is applied via the CSS property "background".

To optimize and compress your CSS code, you can use our [online CSS compressor and optimizer](#) based on csstidy. If you want to create a linear or radial gradient as background or border, check our [CSS Gradient Generator](#).

Hey! You found this booklet interesting? Support Converting Colors with the new Membership Option!

The pro membership hides all ads, plus gives you double the colors in the color bucket, and more awesome pro features!

[Learn more, Memberships starting at \\$2.50/m!](#)

**Follow me
on Twitter!**

@ConvertingColor