

Converting Colors

Hex(D3B3B6)

Have a look what the booklet for
Hex(D3B3B6) contains.

Hex(D3B3B6)	3
<i>Conversions</i>	4
<i>Details</i>	6
<i>Harmonies</i>	11
<i>Previews</i>	23
<i>Color Blindness Simulation</i>	26
<i>CSS Examples</i>	29

Color

Hex(D3B3B6)

Conversions

Conversions Part 1

Format	Color
Hex	D3B3B6
RGB	211, 179, 182
RGB Percent	83%, 70%, 71%
CMY	0.1725, 0.2980, 0.2863
CMYK	0.00, 0.15, 0.14, 0.17
HSL	354°, 27%, 76%
HSV	354°, 15%, 83%
XYZ	51.4276, 49.4665, 51.0934
YIQ	188.9100, 18.1090, 7.7170

Conversions

Conversions Part 2

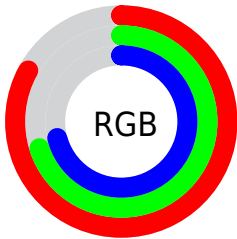
Format	Color
R _Y B	211, 179, 182
Decimal	13874102
CIE Lab	75.74, 12.00, 2.76
CIE LCh	76, 12.312, 12.938
Yxy	49.4665, 0.3384, 0.3255
Android (android.graphics.Color)	4292064182 (0xFFD3B3B6)
YUV	188.9100, -3.4066, 19.3729
Hunter-Lab	70.3324, 7.4388, 6.1611

Details

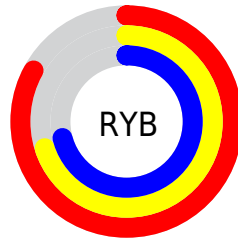
The Hex color **D3B3B6** is a light color, and the websafe version is hex **CC9999**. A complement of this color would be **B3D3D0**, and the grayscale version is **BDBDBD**.

A 20% lighter version of the original color is **FFEBEE**, and **9C7E81** is the 20% darker color. If you saturate the color by 10%, you get **D39EA3**, and if you desaturate by 10%, it is **D3C8C9**.

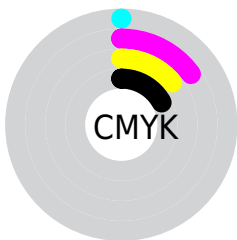
Distribution



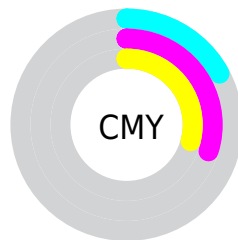
- Red (83%)
- Green (70%)
- Blue (71%)



- Red (83%)
- Yellow (70%)
- Blue (71%)



- Cyan (0%)
- Magenta (15%)
- Yellow (14%)
- Black (17%)



- Cyan (17%)
- Magenta (30%)
- Yellow (29%)

Brightness & Saturation Gradients

These gradients show how the Hex color D3B3B6 changes by changing the brightness by 10 percent. The first figure shows a shift by +10% for each color and the second figure -10%.

Similar to the brightness gradients but the following saturation gradients show a change of the Hex color D3B3B6 by changing the saturation by 10% instead.

 D3B3B6

 D3B3B6

FFFFFF

 B7989B

 FFEBEE

 9C7E81

 826568

 684D50

 503639

 382124

 230B0E

 000000

 D3B3B6

 D3B3B6

 D39EA3

 D3C8C9

 D38990

 D3DDDC

 D3747D

 D3F2EF

 D35F6A

 D3FFFF

 D34A56

 D33443

 D31F30

 D30A1D

 D30014

Harmonies

Analogous

The Analogous color harmony consists of three colors that are next to each other on the color wheel.



CEB4C2



D3B3B6



D2B5AC

Triad

The Triadic color harmony groups three colors that are evenly spaced from another and form a triangle on the color wheel.



D3B3B6



B2BFAA



A7BED0

Complementary

The Complementary color scheme is a pair of colors which are on the opposite of each other on the color wheel.



D3B3B6



B3D3D0

Split Complementary

Split-complementary colors differ from the complementary color scheme. The scheme consists of three colors, the original color and two neighbors of the complement color.



9FC0CA



D3B3B6



A6C1B4

Square

The Square scheme is like the rectangle color scheme, but the four colors are evenly spaced on the color wheel.



D3B3B6



BFBBA5



9FC1BF



B5BAD1

Rectangle

The Rectangle color scheme consists of four colors that form a rectangle on the color wheel.



D3B3B6



CDB7A7



9FC1BF



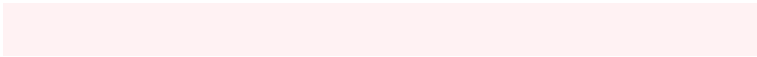
A4BFCE

Sweetspot

The Sweet Spot groups the original color and five complimentary colors.



D3B3B6



FFF2F3



D0B3D3



807879



000000



808080

Same Dimension

The Same Dimension uses a secret algorithm to generate beautiful new colors.



D3B3B6



FFD1D5



D3C0B3



695E5F



A80010



290004

Inverse Universe

The Inverse Universe completely reimagines the original color for something new.



D3B3B6



FFD1D5



B3C6D3



695E5F



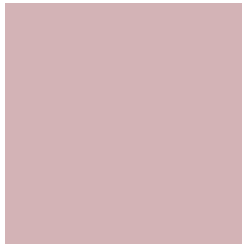
A80010



290004

Previews

White Background



This preview shows how the Hex color D3B3B6 looks on a white background.

Color Contrast Check

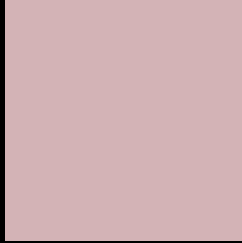
Large Text (above 18pt) WCAG AA × Fail

Any Text WCAG AA × Fail

Large Text (above 18pt) WCAG AAA × Fail

Any Text WCAG AAA × Fail

Black Background



This preview shows how the Hex color D3B3B6 looks on a black background.

Color Contrast Check

Large Text (above 18pt) WCAG AA ✓ Pass

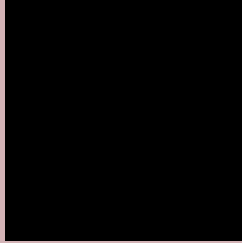
Any Text WCAG AA ✓ Pass

Large Text (above 18pt) WCAG AAA ✓ Pass

Any Text WCAG AAA ✓ Pass

If you want to check with other color combinations, try the [Color Contrast Checker](#).

Hex D3B3B6 Background



This preview shows how black text looks on a background with the Hex color D3B3B6.



This preview shows how white text looks on a background with the Hex color D3B3B6.

Color Blindness Simulation

Color vision deficiency is a very complex topic, and I could not describe the different causes any better than Wikipedia does, so if you want to learn more, you should check out their [article about color blindness](#).

Dichromacy



Original Color
D3B3B6

Protanopia
BEBABA

Deuteranopia
CFB5B6



Tritanopia
D4B2BF

Trichromacy



Original Color
D3B3B6

Protanomaly
C6B7B9

Deuteranomaly
D0B4B6

Tritanomaly
D4B2BC

Monochromacy



Original Color
D3B3B6

Achromatopsia
BDBDBD

Achromatomaly
C5B9BA

CSS Examples

Text

The CSS property to change the color of the text to Hex D3B3B6 is called "color". The color property can be set on classes, ids or directly on the HTML element.

This example shows how text in the color #D3B3B6 looks like.

```
.text, #text, p{  
    color:#D3B3B6  
}
```

If you want to add a text shadow in that color use the text-shadow property, you can generate a text shadow directly with our [CSS Text Shadow Generator](#).

Here you see how black text with a 4 pixel #D3B3B6 colored shadow looks like.

```
.shadow{ text-shadow: 4px 4px 2px #D3B3B6
}
```

Border

The CSS property to change the border of an element to Hex D3B3B6 is called "border". The border property can be set on classes, ids or directly on the HTML element.

This example shows the color as border, it can be applied via the CSS property "border" or "border-color".

```
.border, #border, table{ border:4px solid
#D3B3B6 }
```

If only the border color should be changed use the property `border-color`.

```
.border{ border-color:#D3B3B6 }
```

If you want to add a box shadow in that color use:

Here you see how a box with a 4 pixel #D3B3B6 colored shadow looks like.

```
.boxshadow{ -moz-box-shadow:4px 4px 4px  
4px #D3B3B6; -webkit-box-shadow:4px 4px  
4px 4px #D3B3B6; box-shadow:4px 4px 4px  
4px #D3B3B6 }
```

Background

The CSS property to change the background color of an element to Hex D3B3B6 is called "background". The background property can be set on classes, ids or directly on the HTML element.

```
.background, #background, body{  
background:#D3B3B6 }
```

If only the background color should be changed can be used:

```
.background{ background-color:#D3B3B6 }
```

This example shows the color as background, it is applied via the CSS property "background".

To optimize and compress your CSS code, you can use our [online CSS compressor and optimizer](#) based on csstidy. If you want to create a linear or radial gradient as background or border, check our [CSS Gradient Generator](#).

Hey! You found this booklet interesting? Support Converting Colors with the new Membership Option!

The pro membership hides all ads, plus gives you double the colors in the color bucket, and more awesome pro features!

[Learn more, Memberships starting at \\$2.50/m!](#)

**Follow me
on Twitter!**

@ConvertingColor