

# Converting Colors

Hex(D3B8BD)

Have a look what the booklet for  
Hex(D3B8BD) contains.

<b>Hex(D3B8BD)</b> .....	3
<b><i>Conversions</i></b> .....	4
<b><i>Details</i></b> .....	6
<b><i>Harmonies</i></b> .....	11
<b><i>Previews</i></b> .....	23
<b><i>Color Blindness Simulation</i></b> .....	26
<b><i>CSS Examples</i></b> .....	29

**Color**

**Hex(D3B8BD)**

# Conversions

## Conversions Part 1

Format	Color
Hex	D3B8BD
RGB	211, 184, 189
RGB Percent	83%, 72%, 74%
CMY	0.1725, 0.2784, 0.2588
CMYK	0.00, 0.13, 0.10, 0.17
HSL	349°, 23%, 77%
HSV	349°, 13%, 83%
XYZ	53.1898, 51.8040, 55.3399
YIQ	192.6430, 14.4870, 7.2790

# Conversions

## Conversions Part 2

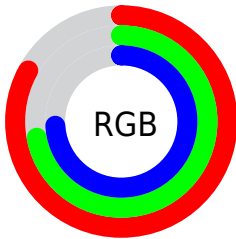
Format	Color
R <sub>Y</sub> B	211, 184, 189
Decimal	13875389
CIE Lab	77.16, 10.47, 1.02
CIE LCh	77, 10.517, 5.556
Yxy	51.8040, 0.3317, 0.3231
Android (android.graphics.Color)	4292065469 (0xFFD3B8BD)
YUV	192.6430, -1.7960, 16.0991
Hunter-Lab	71.9750, 5.9559, 4.7958

# Details

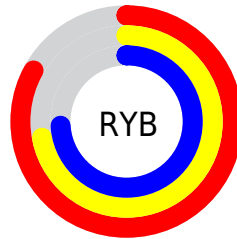
The Hex color **D3B8BD** is a light color, and the websafe version is hex **CCCCCC**. A complement of this color would be **B8D3CE**, and the grayscale version is **C1C1C1**.

A 20% lighter version of the original color is **FFF0F5**, and **9C8388** is the 20% darker color. If you saturate the color by 10%, you get **D3A3AC**, and if you desaturate by 10%, it is **D3CDCE**.

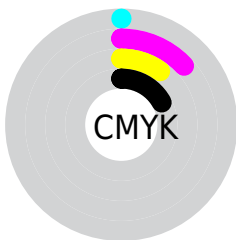
# Distribution



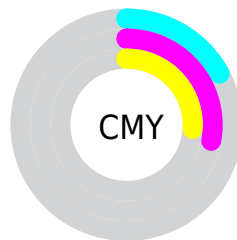
- Red (83%)
- Green (72%)
- Blue (74%)



- Red (83%)
- Yellow (72%)
- Blue (74%)



- Cyan (0%)
- Magenta (13%)
- Yellow (10%)
- Black (17%)



- Cyan (17%)
- Magenta (28%)
- Yellow (26%)

# Brightness & Saturation Gradients

These gradients show how the Hex color D3B8BD changes by changing the brightness by 10 percent. The first figure shows a shift by +10% for each color and the second figure -10%.

Similar to the brightness gradients but the following saturation gradients show a change of the Hex color D3B8BD by changing the saturation by 10% instead.



 D3B8BD

FFFFFF

 FFF0F5

 D3B8BD

 B79DA2

 9C8388

 826A6E

 695256

 503A3F

 392529

 231015

 000000

 D3B8BD

 D3B8BD

 D3A3AC

 D3CDCE

 D38E9B

 D3E2DF

 D37989

 D3F7F1

 D36478

 D3FFFF

 D34F67

 D33956

 D32445

 D30F33

 D30027

# Harmonies

## Analogous

The Analogous color harmony consists of three colors that are next to each other on the color wheel.



CDB9C7



D3B8BD



D3B9B4

# Triad

The Triadic color harmony groups three colors that are evenly spaced from another and form a triangle on the color wheel.



D3B8BD



BAC1AF



ACC2D0

# Complementary

The Complementary color scheme is a pair of colors which are on the opposite of each other on the color wheel.



D3B8BD



B8D3CE

# Split Complementary

Split-complementary colors differ from the complementary color scheme. The scheme consists of three colors, the original color and two neighbors of the complement color.



A7C4C9



D3B8BD



AFC4B6

# Square

The Square scheme is like the rectangle color scheme, but the four colors are evenly spaced on the color wheel.



D3B8BD



C5BEAB



A8C4C0



B7BFD2

# Rectangle

The Rectangle color scheme consists of four colors that form a rectangle on the color wheel.



D3B8BD



D0BAAF



A8C4C0



AAC3CE



# Sweetspot

The Sweet Spot groups the original color and five complimentary colors.



D3B8BD



FFF5F7



CEB8D3



80797A



000000



808080



# Same Dimension

The Same Dimension uses a secret algorithm to generate beautiful new colors.



D3B8BD



FFD9E0



D3C0B8



695E60



A8001F



290008



# Inverse Universe

The Inverse Universe completely reimagines the original color for something new.



D3B8BD



FFD9E0



B8CBD3



695E60



A8001F

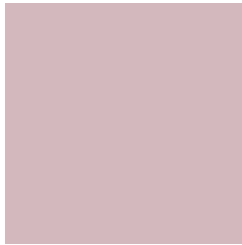


290008



# Previews

## White Background



This preview shows how the Hex color D3B8BD looks on a white background.

## Color Contrast Check

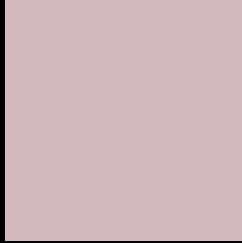
Large Text (above 18pt) WCAG AA × Fail

Any Text WCAG AA × Fail

Large Text (above 18pt) WCAG AAA × Fail

Any Text WCAG AAA × Fail

# Black Background



This preview shows how the Hex color D3B8BD looks on a black background.

## Color Contrast Check

Large Text (above 18pt) WCAG AA ✓ Pass

Any Text WCAG AA ✓ Pass

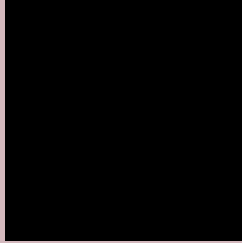
Large Text (above 18pt) WCAG AAA ✓ Pass

Any Text WCAG AAA ✓ Pass

If you want to check with other color combinations, try the [Color Contrast Checker](#).



## Hex D3B8BD Background



This preview shows how black text looks on a background with the Hex color D3B8BD.



This preview shows how white text looks on a background with the Hex color D3B8BD.

# Color Blindness Simulation

Color vision deficiency is a very complex topic, and I could not describe the different causes any better than Wikipedia does, so if you want to learn more, you should check out their [article about color blindness](#).

## Dichromacy





**Tritanopia**  
D4B7C5

# Trichromacy



**Original Color**  
D3B8BD

**Protanomaly**  
C8BCBF

**Deuteranomaly**  
D2B9BD

**Tritanomaly**  
D4B7C2

# Monochromacy



**Original Color**  
D3B8BD

**Achromatopsia**  
C1C1C1

**Achromatomaly**  
C8BEC0

# CSS Examples

## Text

The CSS property to change the color of the text to Hex D3B8BD is called "color". The color property can be set on classes, ids or directly on the HTML element.

This example shows how text in the color #D3B8BD looks like.

```
.text, #text, p{  
    color:#D3B8BD  
}
```

If you want to add a text shadow in that color use the text-shadow property, you can generate a text shadow directly with our [CSS Text Shadow Generator](#).

Here you see how black text with a 4 pixel #D3B8BD colored shadow looks like.

```
.shadow{ text-shadow: 4px 4px 2px #D3B8BD }  
}
```

## Border

The CSS property to change the border of an element to Hex D3B8BD is called "border". The border property can be set on classes, ids or directly on the HTML element.

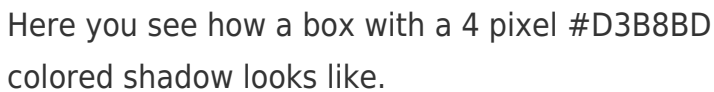
This example shows the color as border, it can be applied via the CSS property "border" or "border-color".

```
.border, #border, table{ border:4px solid #D3B8BD }  
}
```

If only the border color should be changed use the property `border-color`.

```
.border{ border-color:#D3B8BD }
```

If you want to add a box shadow in that color use:



Here you see how a box with a 4 pixel `#D3B8BD` colored shadow looks like.

```
.boxshadow{ -moz-box-shadow:4px 4px 4px  
4px #D3B8BD; -webkit-box-shadow:4px 4px  
4px 4px #D3B8BD; box-shadow:4px 4px 4px  
4px #D3B8BD }
```

# Background

The CSS property to change the background color of an element to Hex D3B8BD is called "background". The background property can be set on classes, ids or directly on the HTML element.

```
.background, #background, body{  
background:#D3B8BD }
```

If only the background color should be changed can be used:

```
.background{ background-color:#D3B8BD }
```

This example shows the color as background, it is applied via the CSS property "background".

To optimize and compress your CSS code, you can use our [online CSS compressor and optimizer](#) based on csstidy. If you want to create a linear or radial gradient as background or border, check our [CSS Gradient Generator](#).



Hey! You found this booklet interesting? Support Converting Colors with the new Membership Option!

The pro membership hides all ads, plus gives you double the colors in the color bucket, and more awesome pro features!

**[Learn more, Memberships starting at \\$2.50/m!](#)**

**Follow me  
on Twitter!**

@ConvertingColor