

Converting Colors

Hex(D3BAB5)

Have a look what the booklet for
Hex(D3BAB5) contains.

Hex(D3BAB5)	3
<i>Conversions</i>	4
<i>Details</i>	6
<i>Harmonies</i>	11
<i>Previews</i>	23
<i>Color Blindness Simulation</i>	26
<i>CSS Examples</i>	29

Color

Hex(D3BAB5)

Conversions

Conversions Part 1

Format	Color
Hex	D3BAB5
RGB	211, 186, 181
RGB Percent	83%, 73%, 71%
CMY	0.1725, 0.2706, 0.2902
CMYK	0.00, 0.12, 0.14, 0.17
HSL	10°, 25%, 77%
HSV	10°, 14%, 83%
XYZ	52.7634, 52.3029, 51.0306
YIQ	192.9050, 16.5050, 3.7450

Conversions

Conversions Part 2

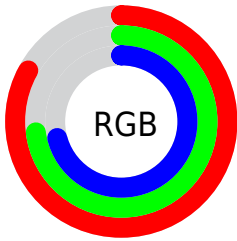
Format	Color
R _Y B	211, 187, 181
Decimal	13875893
CIE Lab	77.46, 8.08, 5.79
CIE LCh	77, 9.938, 35.618
Yxy	52.3029, 0.3380, 0.3351
Android (android.graphics.Color)	4292065973 (0xFFD3BAB5)
YUV	192.9050, -5.8692, 15.8693
Hunter-Lab	72.3207, 3.6678, 8.7886

Details

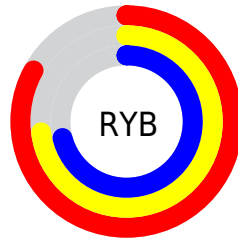
The Hex color **D3BAB5** is a light color, and the websafe version is hex **CCCCCC**. A complement of this color would be **B5CED3**, and the grayscale version is **C1C1C1**.

A 20% lighter version of the original color is **FFF2ED**, and **9C8580** is the 20% darker color. If you saturate the color by 10%, you get **D3A8A0**, and if you desaturate by 10%, it is **D3CCCA**.

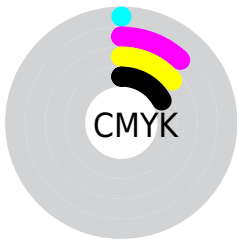
Distribution



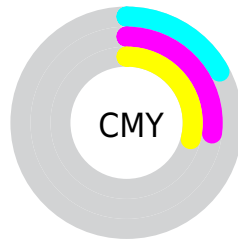
- Red (83%)
- Green (73%)
- Blue (71%)



- Red (83%)
- Yellow (73%)
- Blue (71%)



- Cyan (0%)
- Magenta (12%)
- Yellow (14%)
- Black (17%)



- Cyan (17%)
- Magenta (27%)
- Yellow (29%)

Brightness & Saturation Gradients

These gradients show how the Hex color D3BAB5 changes by changing the brightness by 10 percent. The first figure shows a shift by +10% for each color and the second figure -10%.

Similar to the brightness gradients but the following saturation gradients show a change of the Hex color D3BAB5 by changing the saturation by 10% instead.

 D3BAB5

 D3BAB5

FFFFFF

 B79F9A

 FFF2ED

 9C8580

 826C67

 69534F

 503C38

 392623

 23120D

 000000

 D3BAB5

 D3BAB5

 D3A8A0

 D3CCCA

 D3978B

 D3DDDF

 D38576

 D3EFF4

 D37461

 D3FFFF

 D3624C

 D35036

 D33F21

 D32D0C

 D32300

Harmonies

Analogous

The Analogous color harmony consists of three colors that are next to each other on the color wheel.



D3B9BE



D3BAB5



CEBCAF

Triad

The Triadic color harmony groups three colors that are evenly spaced from another and form a triangle on the color wheel.



D3BAB5



B1C4B7



B8C0D1

Complementary

The Complementary color scheme is a pair of colors which are on the opposite of each other on the color wheel.



D3BAB5



B5CED3

Split Complementary

Split-complementary colors differ from the complementary color scheme. The scheme consists of three colors, the original color and two neighbors of the complement color.



AEC2D0



D3BAB5



AAC5C1

Square

The Square scheme is like the rectangle color scheme, but the four colors are evenly spaced on the color wheel.



D3BAB5



BBC2B0



A9C4CA



C3BCCE

Rectangle

The Rectangle color scheme consists of four colors that form a rectangle on the color wheel.



D3BAB5



C9BEAD



A9C4CA



B4C1D1

Sweetspot

The Sweet Spot groups the original color and five complimentary colors.



D3BAB5



FFF7F5



D3B5CE



807A79



000000



808080

Same Dimension

The Same Dimension uses a secret algorithm to generate beautiful new colors.



D3BAB5



FFDBD4



D3C9B5



69605E



A81C00



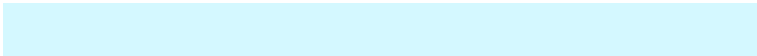
290700

Inverse Universe

The Inverse Universe completely reimagines the original color for something new.



B5CED3



D4F8FF



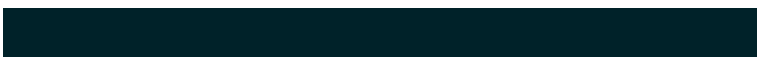
B5C0D3



5E6769



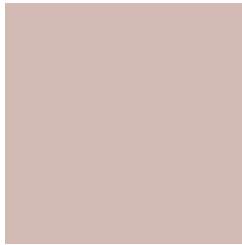
008CA8



002229

Previews

White Background



This preview shows how the Hex color D3BAB5 looks on a white background.

Color Contrast Check

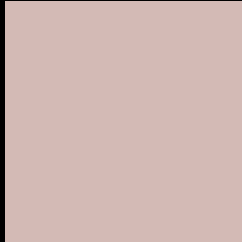
Large Text (above 18pt) WCAG AA × Fail

Any Text WCAG AA × Fail

Large Text (above 18pt) WCAG AAA × Fail

Any Text WCAG AAA × Fail

Black Background



This preview shows how the Hex color D3BAB5 looks on a black background.

Color Contrast Check

Large Text (above 18pt) WCAG AA ✓ Pass

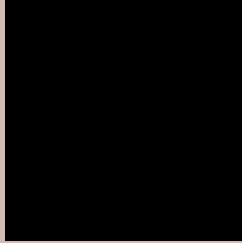
Any Text WCAG AA ✓ Pass

Large Text (above 18pt) WCAG AAA ✓ Pass

Any Text WCAG AAA ✓ Pass

If you want to check with other color combinations, try the [Color Contrast Checker](#).

Hex D3BAB5 Background



This preview shows how black text looks on a background with the Hex color D3BAB5.

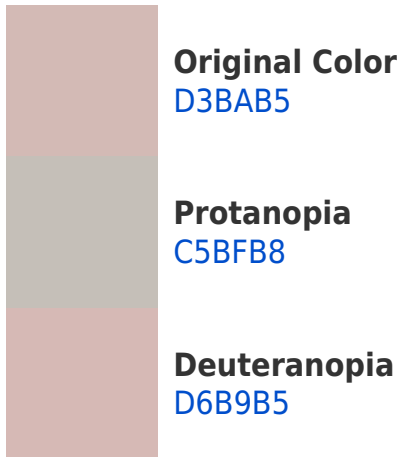


This preview shows how white text looks on a background with the Hex color D3BAB5.

Color Blindness Simulation

Color vision deficiency is a very complex topic, and I could not describe the different causes any better than Wikipedia does, so if you want to learn more, you should check out their [article about color blindness](#).

Dichromacy





Tritanopia
D5B7C6

Trichromacy



Original Color
D3BAB5

Protanomaly
CABDB7

Deuteranomaly
D5B9B5

Tritanomaly
D4B8C0

Monochromacy



Original Color
D3BAB5

Achromatopsia
C1C1C1

Achromatomaly
C8EBD

CSS Examples

Text

The CSS property to change the color of the text to Hex D3BAB5 is called "color". The color property can be set on classes, ids or directly on the HTML element.

This example shows how text in the color #D3BAB5 looks like.

```
.text, #text, p{  
    color:#D3BAB5  
}
```

If you want to add a text shadow in that color use the text-shadow property, you can generate a text shadow directly with our [CSS Text Shadow Generator](#).

Here you see how black text with a 4 pixel #D3BAB5 colored shadow looks like.

```
.shadow{ text-shadow: 4px 4px 2px #D3BAB5  
}
```

Border

The CSS property to change the border of an element to Hex D3BAB5 is called "border". The border property can be set on classes, ids or directly on the HTML element.

This example shows the color as border, it can be applied via the CSS property "border" or "border-color".

```
.border, #border, table{ border:4px solid  
#D3BAB5 }
```

If only the border color should be changed use the property `border-color`.

```
.border{ border-color:#D3BAB5 }
```

If you want to add a box shadow in that color use:

Here you see how a box with a 4 pixel #D3BAB5 colored shadow looks like.

```
.boxshadow{ -moz-box-shadow:4px 4px 4px  
4px #D3BAB5; -webkit-box-shadow:4px 4px  
4px 4px #D3BAB5; box-shadow:4px 4px 4px  
4px #D3BAB5 }
```

Background

The CSS property to change the background color of an element to Hex D3BAB5 is called "background". The background property can be set on classes, ids or directly on the HTML element.

```
.background, #background, body{  
background:#D3BAB5 }
```

If only the background color should be changed can be used:

```
.background{ background-color:#D3BAB5 }
```

This example shows the color as background, it is applied via the CSS property "background".

To optimize and compress your CSS code, you can use our [online CSS compressor and optimizer](#) based on csstidy. If you want to create a linear or radial gradient as background or border, check our [CSS Gradient Generator](#).

Hey! You found this booklet interesting? Support Converting Colors with the new Membership Option!

The pro membership hides all ads, plus gives you double the colors in the color bucket, and more awesome pro features!

[Learn more, Memberships starting at \\$2.50/m!](#)

**Follow me
on Twitter!**

@ConvertingColor