

# Converting Colors

Hex(D3BCC4)

Have a look what the booklet for  
Hex(D3BCC4) contains.

<b>Hex(D3BCC4)</b> .....	3
<i><b>Conversions</b></i> .....	4
<i><b>Details</b></i> .....	6
<i><b>Harmonies</b></i> .....	11
<i><b>Previews</b></i> .....	23
<i><b>Color Blindness Simulation</b></i> .....	26
<i><b>CSS Examples</b></i> .....	29

# **Color**

**Hex(D3BCC4)**

# Conversions

## Conversions Part 1

<b>Format</b>	<b>Color</b>
Hex	D3BCC4
RGB	211, 188, 196
RGB Percent	83%, 74%, 77%
CMY	0.1725, 0.2627, 0.2314
CMYK	0.00, 0.11, 0.07, 0.17
HSL	339°, 21%, 78%
HSV	339°, 11%, 83%
XYZ	54.8110, 53.8008, 59.7203
YIQ	195.7890, 11.1400, 7.3640

# Conversions

## Conversions Part 2

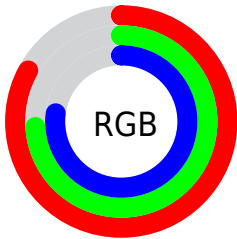
Format	Color
R <sub>Y</sub> B	211, 188, 196
Decimal	13876420
CIE Lab	78.35, 9.52, -1.05
CIE LCh	78, 9.575, 353.712
Yxy	53.8008, 0.3256, 0.3196
Android (android.graphics.Color)	4292066500 (0xFFD3BCC4)
YUV	195.7890, 0.1040, 13.3400
Hunter-Lab	73.3491, 5.0255, 3.0708

# Details

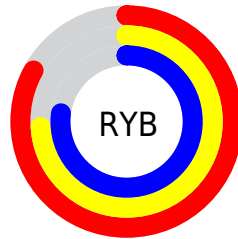
The Hex color **D3BCC4** is a light color, and the websafe version is hex **CCCCCC**. A complement of this color would be **BCD3CB**, and the grayscale version is **C4C4C4**.

A 20% lighter version of the original color is **FFF4FD**, and **9C878E** is the 20% darker color. If you saturate the color by 10%, you get **D3A7B6**, and if you desaturate by 10%, it is **D3D1D2**.

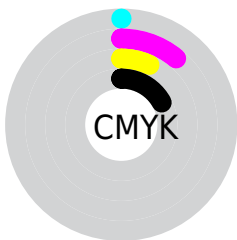
# Distribution



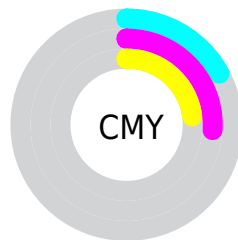
- Red (83%)
- Green (74%)
- Blue (77%)



- Red (83%)
- Yellow (74%)
- Blue (77%)



- Cyan (0%)
- Magenta (11%)
- Yellow (7%)
- Black (17%)



- Cyan (17%)
- Magenta (26%)
- Yellow (23%)

# Brightness & Saturation Gradients

These gradients show how the Hex color D3BCC4 changes by changing the brightness by 10 percent. The first figure shows a shift by +10% for each color and the second figure -10%.

Similar to the brightness gradients but the following saturation gradients show a change of the Hex color D3BCC4 by changing the saturation by 10% instead.



 D3BCC4

 D3BCC4

FFFFFF

 B7A1A9

 FFF4FD

 9C878E

 826D75

 69555C

 513E45

 3A282E

 24131A

 060000

 000000

 D3BCC4

 D3BCC4

 D3A7B6

 D3D1D2

 D392A8

 D3E6E0

 D37D9B

 D3FBED

 D3688D

 D3FFFB

 D3537F

 D3FFFF

 D33D71

 D32864

 D31356

 D30049

# Harmonies

## Analogous

The Analogous color harmony consists of three colors that are next to each other on the color wheel.



CCBECC



D3BCC4



D5BCBB

# Triad

The Triadic color harmony groups three colors that are evenly spaced from another and form a triangle on the color wheel.



D3BCC4



C1C3B1



AFC6D0

# Complementary

The Complementary color scheme is a pair of colors which are on the opposite of each other on the color wheel.



D3BCC4



BCD3CB

# Split Complementary

Split-complementary colors differ from the complementary color scheme. The scheme consists of three colors, the original color and two neighbors of the complement color.



ACC7C9



D3BCC4



B7C6B7

# Square

The Square scheme is like the rectangle color scheme, but the four colors are evenly spaced on the color wheel.



D3BCC4



CBC0B0



AFC7C0



B7C3D3

# Rectangle

The Rectangle color scheme consists of four colors that form a rectangle on the color wheel.



D3BCC4



D4BDB6



AFC7C0



ADC6CE



# Sweetspot

The Sweet Spot groups the original color and five complimentary colors.



D3BCC4



FFF7FA



CBBCD3



807A7C



000000



808080



# Same Dimension

The Same Dimension uses a secret algorithm to generate beautiful new colors.



D3BCC4



FFDEE9



D3BFBC



695E62



A8003B



29000E



# Inverse Universe

The Inverse Universe completely reimagines the original color for something new.



D3BCC4



FFDEE9



BCD0D3



695E62



A8003B



29000E



# Previews

## White Background



This preview shows how the Hex color D3BCC4 looks on a white background.

## Color Contrast Check

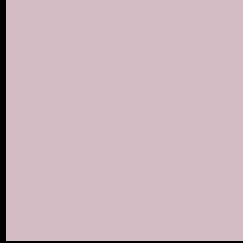
Large Text (above 18pt) WCAG AA × Fail

Any Text WCAG AA × Fail

Large Text (above 18pt) WCAG AAA × Fail

Any Text WCAG AAA × Fail

# Black Background



This preview shows how the Hex color D3BCC4 looks on a black background.

## Color Contrast Check

Large Text (above 18pt) WCAG AA ✓ Pass

Any Text WCAG AA ✓ Pass

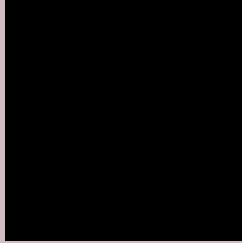
Large Text (above 18pt) WCAG AAA ✓ Pass

Any Text WCAG AAA ✓ Pass

If you want to check with other color combinations, try the [Color Contrast Checker](#).



## Hex D3BCC4 Background



This preview shows how black text looks on a background with the Hex color D3BCC4.

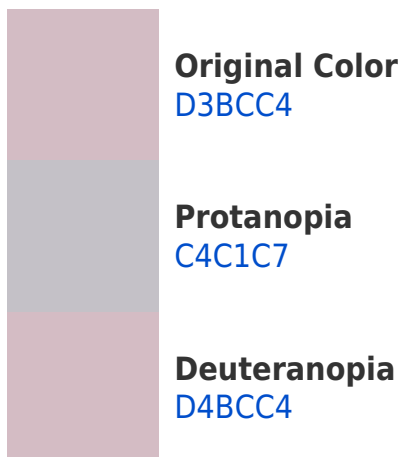


This preview shows how white text looks on a background with the Hex color D3BCC4.

# Color Blindness Simulation

Color vision deficiency is a very complex topic, and I could not describe the different causes any better than Wikipedia does, so if you want to learn more, you should check out their [article about color blindness](#).

## Dichromacy





**Tritanopia**  
D4BBCA

# Trichromacy



**Original Color**  
D3BCC4

**Protanomaly**  
C9BFC6

**Deuteranomaly**  
D4BCC4

**Tritanomaly**  
D4BBC8

# Monochromacy



**Original Color**  
D3BCC4

**Achromatopsia**  
C4C4C4

**Achromatomaly**  
C9C1C4

# CSS Examples

## Text

The CSS property to change the color of the text to Hex D3BCC4 is called "color". The color property can be set on classes, ids or directly on the HTML element.

This example shows how text in the color #D3BCC4 looks like.

```
.text, #text, p{  
    color:#D3BCC4  
}
```

If you want to add a text shadow in that color use the text-shadow property, you can generate a text shadow directly with our [CSS Text Shadow Generator](#).

Here you see how black text with a 4 pixel #D3BCC4 colored shadow looks like.

```
.shadow{ text-shadow: 4px 4px 2px #D3BCC4
}
```

## Border

The CSS property to change the border of an element to Hex D3BCC4 is called "border". The border property can be set on classes, ids or directly on the HTML element.

This example shows the color as border, it can be applied via the CSS property "border" or "border-color".

```
.border, #border, table{ border:4px solid
#D3BCC4 }
```

If only the border color should be changed use the property `border-color`.

```
.border{ border-color:#D3BCC4 }
```

If you want to add a box shadow in that color use:

Here you see how a box with a 4 pixel #D3BCC4 colored shadow looks like.

```
.boxshadow{ -moz-box-shadow:4px 4px 4px  
4px #D3BCC4; -webkit-box-shadow:4px 4px  
4px 4px #D3BCC4; box-shadow:4px 4px 4px  
4px #D3BCC4 }
```

# Background

The CSS property to change the background color of an element to Hex D3BCC4 is called "background". The background property can be set on classes, ids or directly on the HTML element.

```
.background, #background, body{  
background:#D3BCC4 }
```

If only the background color should be changed can be used:

```
.background{ background-color:#D3BCC4 }
```

This example shows the color as background, it is applied via the CSS property "background".

To optimize and compress your CSS code, you can use our [online CSS compressor and optimizer](#) based on csstidy. If you want to create a linear or radial gradient as background or border, check our [CSS Gradient Generator](#).



Hey! You found this booklet interesting? Support Converting Colors with the new Membership Option!

The pro membership hides all ads, plus gives you double the colors in the color bucket, and more awesome pro features!

**[Learn more, Memberships starting at \\$2.50/m!](#)**

**Follow me  
on Twitter!**

@ConvertingColor