

# Converting Colors

Hex(D3BDC9)

Have a look what the booklet for  
Hex(D3BDC9) contains.

<b>Hex(D3BDC9)</b> .....	3
<i><b>Conversions</b></i> .....	4
<i><b>Details</b></i> .....	6
<i><b>Harmonies</b></i> .....	11
<i><b>Previews</b></i> .....	23
<i><b>Color Blindness Simulation</b></i> .....	26
<i><b>CSS Examples</b></i> .....	29

# **Color**

**Hex(D3BDC9)**

# Conversions

## Conversions Part 1

Format	Color
Hex	D3BDC9
RGB	211, 189, 201
RGB Percent	83%, 74%, 79%
CMY	0.1725, 0.2588, 0.2118
CMYK	0.00, 0.10, 0.05, 0.17
HSL	327°, 20%, 78%
HSV	327°, 10%, 83%
XYZ	55.6042, 54.4611, 62.8397
YIQ	196.9460, 9.2600, 8.3960

# Conversions

## Conversions Part 2

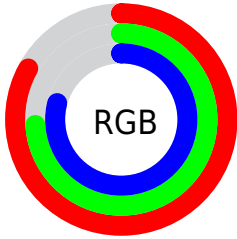
<b>Format</b>	<b>Color</b>
R <sub>Y</sub> B	211, 189, 201
Decimal	13876681
CIE Lab	78.73, 9.86, -3.19
CIE LCh	79, 10.361, 342.079
Yxy	54.4611, 0.3216, 0.3150
Android (android.graphics.Color)	4292066761 (0xFFD3BDC9)
YUV	196.9460, 1.9986, 12.3254
Hunter-Lab	73.7978, 5.3477, 1.1723

# Details

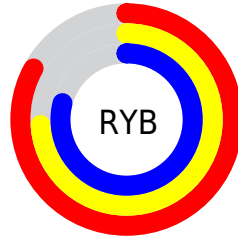
The Hex color **D3BDC9** is a light color, and the websafe version is hex **CCCCCC**. A complement of this color would be **BDD3C7**, and the grayscale version is **C5C5C5**.

A 20% lighter version of the original color is **FFF5FF**, and **9C8893** is the 20% darker color. If you saturate the color by 10%, you get **D3A8BF**, and if you desaturate by 10%, it is **D3D2D3**.

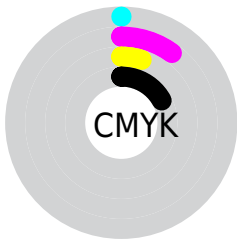
# Distribution



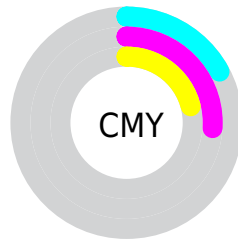
- Red (83%)
- Green (74%)
- Blue (79%)



- Red (83%)
- Yellow (74%)
- Blue (79%)



- Cyan (0%)
- Magenta (10%)
- Yellow (5%)
- Black (17%)



- Cyan (17%)
- Magenta (26%)
- Yellow (21%)

# Brightness & Saturation Gradients

These gradients show how the Hex color D3BDC9 changes by changing the brightness by 10 percent. The first figure shows a shift by +10% for each color and the second figure -10%.

Similar to the brightness gradients but the following saturation gradients show a change of the Hex color D3BDC9 by changing the saturation by 10% instead.



 D3BDC9

FFFFFF

 FFF5FF

 D3BDC9

 B7A2AE

 9C8893

 826E79

 695661

 513F49

 3A2932

 24141D

 0A0003

 000000

 D3BDC9

 D3BDC9

 D3A8BF

 D3D2D3

 D393B6

 D3E7DC

 D37EAC

 D3FCE6

 D369A3

 D3FFEF

 D35499

 D3FFF9

 D33E8F

 D3FFFF

 D32986

 D3147C

 D30073

# Harmonies

## Analogous

The Analogous color harmony consists of three colors that are next to each other on the color wheel.



CABFD1



D3BDC9



D8BCBF

# Triad

The Triadic color harmony groups three colors that are evenly spaced from another and form a triangle on the color wheel.



D3BDC9



C7C3B0



ACC8CF

# Complementary

The Complementary color scheme is a pair of colors which are on the opposite of each other on the color wheel.



D3BDC9



BDD3C7

# Split Complementary

Split-complementary colors differ from the complementary color scheme. The scheme consists of three colors, the original color and two neighbors of the complement color.



ACC9C6



D3BDC9



BCC6B4

# Square

The Square scheme is like the rectangle color scheme, but the four colors are evenly spaced on the color wheel.



D3BDC9



D1C0B1



B2C8BD



B3C5D5

# Rectangle

The Rectangle color scheme consists of four colors that form a rectangle on the color wheel.



D3BDC9



D8BDB9



B2C8BD



ABC8CD

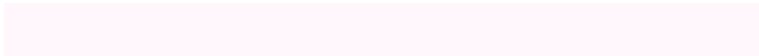


# Sweetspot

The Sweet Spot groups the original color and five complimentary colors.



D3BDC9



FFF7FC



C7BDD3



807A7D



000000



808080



# Same Dimension

The Same Dimension uses a secret algorithm to generate beautiful new colors.



D3BDC9



FFDEF0



D3BDDE



695E64



A8005C



290016



# Inverse Universe

The Inverse Universe completely reimagines the original color for something new.



D3BDC9



FFDEF0



BDD3D2



695E64



A8005C

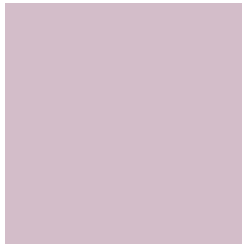


290016



# Previews

## White Background



This preview shows how the Hex color D3BDC9 looks on a white background.

## Color Contrast Check

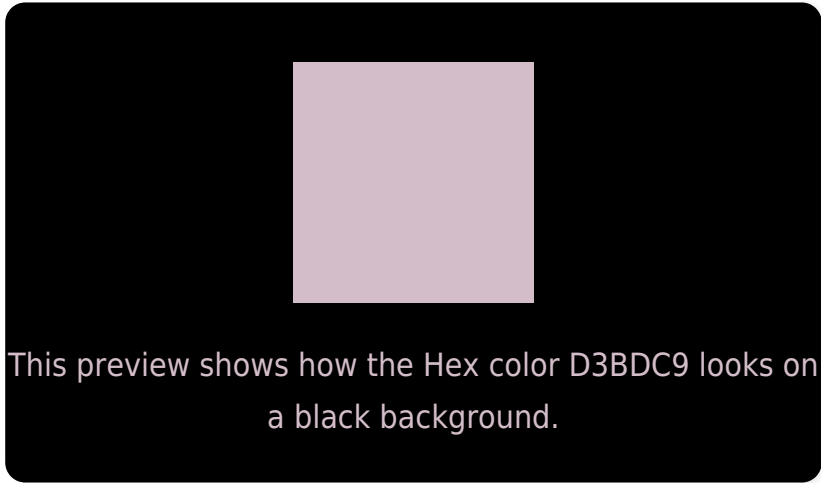
Large Text (above 18pt) WCAG AA × Fail

Any Text WCAG AA × Fail

Large Text (above 18pt) WCAG AAA × Fail

Any Text WCAG AAA × Fail

# Black Background



## Color Contrast Check

Large Text (above 18pt) WCAG AA ✓ Pass

Any Text WCAG AA ✓ Pass

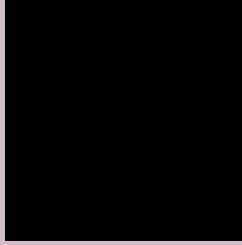
Large Text (above 18pt) WCAG AAA ✓ Pass

Any Text WCAG AAA ✓ Pass

If you want to check with other color combinations, try the [Color Contrast Checker](#).



## Hex D3BDC9 Background



This preview shows how black text looks on a background with the Hex color D3BDC9.

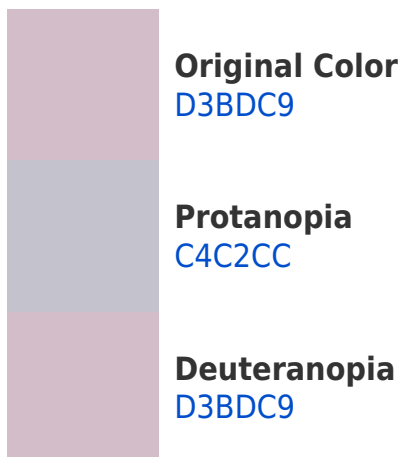


This preview shows how white text looks on a background with the Hex color D3BDC9.

# Color Blindness Simulation

Color vision deficiency is a very complex topic, and I could not describe the different causes any better than Wikipedia does, so if you want to learn more, you should check out their [article about color blindness](#).

## Dichromacy





**Tritanopia**  
D3BDCB

# Trichromacy



**Original Color**  
D3BDC9

**Protanomaly**  
C9C0CB

**Deuteranomaly**  
D3BDC9

**Tritanomaly**  
D3BDCA

# Monochromacy



**Original Color**  
D3BDC9

**Achromatopsia**  
C5C5C5

**Achromatomaly**  
CAC2C6

# CSS Examples

## Text

The CSS property to change the color of the text to Hex D3BDC9 is called "color". The color property can be set on classes, ids or directly on the HTML element.

This example shows how text in the color #D3BDC9 looks like.

```
.text, #text, p{  
    color:#D3BDC9  
}
```

If you want to add a text shadow in that color use the text-shadow property, you can generate a text shadow directly with our [CSS Text Shadow Generator](#).

Here you see how black text with a 4 pixel #D3BDC9 colored shadow looks like.

```
.shadow{ text-shadow: 4px 4px 2px #D3BDC9
}
```

## Border

The CSS property to change the border of an element to Hex D3BDC9 is called "border". The border property can be set on classes, ids or directly on the HTML element.

This example shows the color as border, it can be applied via the CSS property "border" or "border-color".

```
.border, #border, table{ border:4px solid
#D3BDC9 }
```

If only the border color should be changed use the property `border-color`.

```
.border{ border-color:#D3BDC9 }
```

If you want to add a box shadow in that color use:

Here you see how a box with a 4 pixel #D3BDC9 colored shadow looks like.

```
.boxshadow{ -moz-box-shadow:4px 4px 4px  
4px #D3BDC9; -webkit-box-shadow:4px 4px  
4px 4px #D3BDC9; box-shadow:4px 4px 4px  
4px #D3BDC9 }
```

# Background

The CSS property to change the background color of an element to Hex D3BDC9 is called "background". The background property can be set on classes, ids or directly on the HTML element.

```
.background, #background, body{  
background:#D3BDC9 }
```

If only the background color should be changed can be used:

```
.background{ background-color:#D3BDC9 }
```

This example shows the color as background, it is applied via the CSS property "background".

To optimize and compress your CSS code, you can use our [online CSS compressor and optimizer](#) based on csstidy. If you want to create a linear or radial gradient as background or border, check our [CSS Gradient Generator](#).



Hey! You found this booklet interesting? Support Converting Colors with the new Membership Option!

The pro membership hides all ads, plus gives you double the colors in the color bucket, and more awesome pro features!

**[Learn more, Memberships starting at \\$2.50/m!](#)**

**Follow me  
on Twitter!**

@ConvertingColor