

Converting Colors

Hex(D3BEBB)

Have a look what the booklet for
Hex(D3BEBB) contains.

Hex(D3BEBB)	3
<i>Conversions</i>	4
<i>Details</i>	6
<i>Harmonies</i>	11
<i>Previews</i>	23
<i>Color Blindness Simulation</i>	26
<i>CSS Examples</i>	29

Color

Hex(D3BEBB)

Conversions

Conversions Part 1

Format	Color
Hex	D3BEBB
RGB	211, 190, 187
RGB Percent	83%, 75%, 73%
CMY	0.1725, 0.2549, 0.2667
CMYK	0.00, 0.10, 0.11, 0.17
HSL	8°, 21%, 78%
HSV	8°, 11%, 83%
XYZ	54.2471, 54.2637, 54.6285
YIQ	195.9370, 13.4790, 3.5190

Conversions

Conversions Part 2

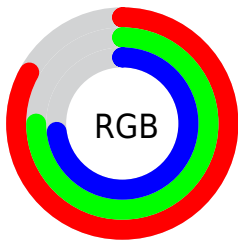
Format	Color
R _Y B	211, 190, 187
Decimal	13876923
CIE Lab	78.62, 6.92, 4.21
CIE LCh	79, 8.101, 31.296
Yxy	54.2637, 0.3325, 0.3326
Android (android.graphics.Color)	4292067003 (0xFFD3BEBB)
YUV	195.9370, -4.4059, 13.2103
Hunter-Lab	73.6639, 2.5380, 7.5957

Details

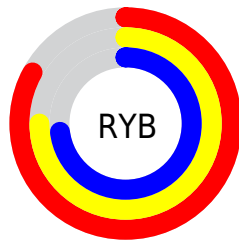
The Hex color **D3BEBB** is a light color, and the websafe version is hex **CCCCCC**. A complement of this color would be **BBD0D3**, and the grayscale version is **C4C4C4**.

A 20% lighter version of the original color is **FFF6F3**, and **9C8986** is the 20% darker color. If you saturate the color by 10%, you get **D3ACA6**, and if you desaturate by 10%, it is **D3D0D0**.

Distribution



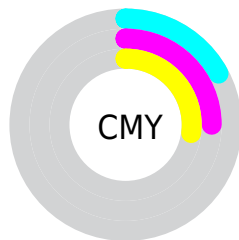
- Red (83%)
- Green (75%)
- Blue (73%)



- Red (83%)
- Yellow (75%)
- Blue (73%)



- Cyan (0%)
- Magenta (10%)
- Yellow (11%)
- Black (17%)



- Cyan (17%)
- Magenta (25%)
- Yellow (27%)

Brightness & Saturation Gradients

These gradients show how the Hex color D3BEBB changes by changing the brightness by 10 percent. The first figure shows a shift by +10% for each color and the second figure -10%.

Similar to the brightness gradients but the following saturation gradients show a change of the Hex color D3BEBB by changing the saturation by 10% instead.

 D3BEBB

 D3BEBB

FFFFFF

 B7A3A0

 FFF6F3

 9C8986

 826F6D

 695754

 51403D

 392A27

 231513

 020000

 000000

 D3BEBB

 D3BEBB

 D3ACA6

 D3D0D0

 D39991

 D3E3E5

 D3877C

 D3F5FA

 D37467

 D3FFFF

 D36252

 D34F3C

 D33D27

 D32A12

 D31A00

Harmonies

Analogous

The Analogous color harmony consists of three colors that are next to each other on the color wheel.



D2BEC2



D3BEBB



D0C0B6

Triad

The Triadic color harmony groups three colors that are evenly spaced from another and form a triangle on the color wheel.



D3BEBB



B8C6BB



BBC3D1

Complementary

The Complementary color scheme is a pair of colors which are on the opposite of each other on the color wheel.



D3BEBB



BBD0D3

Split Complementary

Split-complementary colors differ from the complementary color scheme. The scheme consists of three colors, the original color and two neighbors of the complement color.



B4C5CF



D3BEBB



B2C7C3

Square

The Square scheme is like the rectangle color scheme, but the four colors are evenly spaced on the color wheel.



D3BEBB



C0C4B6



B0C7CA



C5C1CF

Rectangle

The Rectangle color scheme consists of four colors that form a rectangle on the color wheel.



D3BEBB



CBC1B4



B0C7CA



B8C4D1

Sweetspot

The Sweet Spot groups the original color and five complimentary colors.



D3BEBB



FFF8F7



D3BBD0



807B7A



000000



808080

Same Dimension

The Same Dimension uses a secret algorithm to generate beautiful new colors.



D3BEBB



FFE0DB



D3CABB



695F5E



A81500



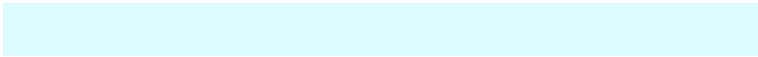
290500

Inverse Universe

The Inverse Universe completely reimagines the original color for something new.



BBD0D3



DBFBFF



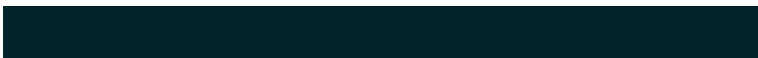
BBC4D3



5E6769



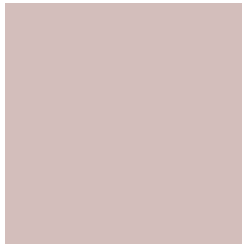
0093A8



002429

Previews

White Background



This preview shows how the Hex color D3BEBB looks on a white background.

Color Contrast Check

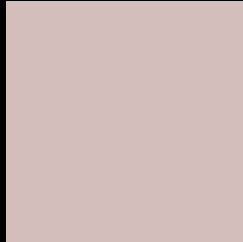
Large Text (above 18pt) WCAG AA × Fail

Any Text WCAG AA × Fail

Large Text (above 18pt) WCAG AAA × Fail

Any Text WCAG AAA × Fail

Black Background



This preview shows how the Hex color D3BEBB looks on a black background.

Color Contrast Check

Large Text (above 18pt) WCAG AA ✓ Pass

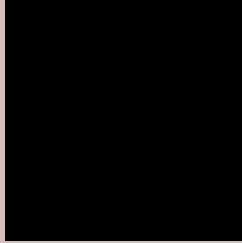
Any Text WCAG AA ✓ Pass

Large Text (above 18pt) WCAG AAA ✓ Pass

Any Text WCAG AAA ✓ Pass

If you want to check with other color combinations, try the [Color Contrast Checker](#).

Hex D3BEBB Background



This preview shows how black text looks on a background with the Hex color D3BEBB.



This preview shows how white text looks on a background with the Hex color D3BEBB.

Color Blindness Simulation

Color vision deficiency is a very complex topic, and I could not describe the different causes any better than Wikipedia does, so if you want to learn more, you should check out their [article about color blindness](#).

Dichromacy





Tritanopia
D5BCCA

Trichromacy



Original Color
D3BEBB

Protanomaly
CBC1BC

Deuteranomaly
D6BDBB

Tritanomaly
D4BDC5

Monochromacy



Original Color
D3BEBB

Achromatopsia
C4C4C4

Achromatomaly
C9C2C1

CSS Examples

Text

The CSS property to change the color of the text to Hex D3BEBB is called "color". The color property can be set on classes, ids or directly on the HTML element.

This example shows how text in the color #D3BEBB looks like.

```
.text, #text, p{  
    color:#D3BEBB  
}
```

If you want to add a text shadow in that color use the text-shadow property, you can generate a text shadow directly with our [CSS Text Shadow Generator](#).

Here you see how black text with a 4 pixel #D3BEBB colored shadow looks like.

```
.shadow{ text-shadow: 4px 4px 2px #D3BEBB }  
}
```

Border

The CSS property to change the border of an element to Hex D3BEBB is called "border". The border property can be set on classes, ids or directly on the HTML element.

This example shows the color as border, it can be applied via the CSS property "border" or "border-color".

```
.border, #border, table{ border:4px solid #D3BEBB }  
}
```

If only the border color should be changed use the property `border-color`.

```
.border{ border-color:#D3BEBB }
```

If you want to add a box shadow in that color use:

Here you see how a box with a 4 pixel #D3BEBB colored shadow looks like.

```
.boxshadow{ -moz-box-shadow:4px 4px 4px  
4px #D3BEBB; -webkit-box-shadow:4px 4px  
4px 4px #D3BEBB; box-shadow:4px 4px 4px  
4px #D3BEBB }
```

Background

The CSS property to change the background color of an element to Hex D3BEBB is called "background". The background property can be set on classes, ids or directly on the HTML element.

```
.background, #background, body{  
background:#D3BEBB }
```

If only the background color should be changed can be used:

```
.background{ background-color:#D3BEBB }
```

This example shows the color as background, it is applied via the CSS property "background".

To optimize and compress your CSS code, you can use our [online CSS compressor and optimizer](#) based on csstidy. If you want to create a linear or radial gradient as background or border, check our [CSS Gradient Generator](#).

Hey! You found this booklet interesting? Support Converting Colors with the new Membership Option!

The pro membership hides all ads, plus gives you double the colors in the color bucket, and more awesome pro features!

[Learn more, Memberships starting at \\$2.50/m!](#)

**Follow me
on Twitter!**

@ConvertingColor