

Converting Colors

Hex(D3BECA)

Have a look what the booklet for
Hex(D3BECA) contains.

| | |
|--|----|
| Hex(D3BECA) | 3 |
| <i>Conversions</i> | 4 |
| <i>Details</i> | 6 |
| <i>Harmonies</i> | 11 |
| <i>Previews</i> | 23 |
| <i>Color Blindness Simulation</i> | 26 |
| <i>CSS Examples</i> | 29 |

Color

Hex(D3BECA)

Conversions

Conversions Part 1

| Format | Color |
|-------------|---------------------------|
| Hex | D3BECA |
| RGB | 211, 190, 202 |
| RGB Percent | 83%, 75%, 79% |
| CMY | 0.1725, 0.2549, 0.2078 |
| CMYK | 0.00, 0.10, 0.04, 0.17 |
| HSL | 326°, 19%, 79% |
| HSV | 326°, 10%, 83% |
| XYZ | 55.9381, 54.9401, 63.5334 |
| YIQ | 197.6470, 8.6640, 8.1840 |

Conversions

Conversions Part 2

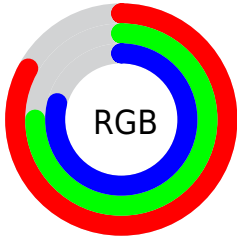
| Format | Color |
|-------------------------------------|------------------------------|
| R _Y B | 211, 190, 202 |
| Decimal | 13876938 |
| CIE Lab | 79.01, 9.50, -3.32 |
| CIE LCh | 79, 10.064, 340.731 |
| Yxy | 54.9401, 0.3207, 0.3150 |
| Android (android.graphics.Color) | 4292067018 (0xFFD3BECA) |
| YUV | 197.6470, 2.1460, 11.7106 |
| Hunter-Lab | 74.1216, 4.9977, 1.0646 |

Details

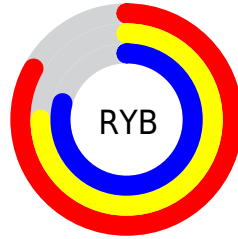
The Hex color **D3BECA** is a light color, and the websafe version is hex **CCCCCC**. A complement of this color would be **BED3C7**, and the grayscale version is **C6C6C6**.

A 20% lighter version of the original color is **FFF6FF**, and **9C8994** is the 20% darker color. If you saturate the color by 10%, you get **D3A9C1**, and if you desaturate by 10%, it is **D3D3D3**.

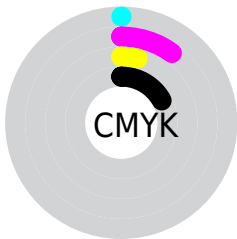
Distribution



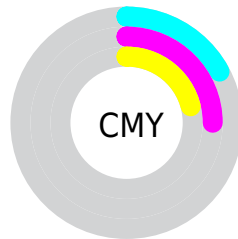
- Red (83%)
- Green (75%)
- Blue (79%)



- Red (83%)
- Yellow (75%)
- Blue (79%)



- Cyan (0%)
- Magenta (10%)
- Yellow (4%)
- Black (17%)



- Cyan (17%)
- Magenta (25%)
- Yellow (21%)

Brightness & Saturation Gradients

These gradients show how the Hex color D3BECA changes by changing the brightness by 10 percent. The first figure shows a shift by +10% for each color and the second figure -10%.

Similar to the brightness gradients but the following saturation gradients show a change of the Hex color D3BECA by changing the saturation by 10% instead.

 D3BECA

FFFFFF

 FFF6FF


 D3BECA

 B7A3AF

 9C8994

 826F7A

 695761

 513F4A

 3A2933

 24151E

 0C0004

 000000

 D3BECA

 D3BECA

 D3A9C1

 D3D3D3

 D394B8

 D3E8DC

 D37FAF

 D3FDE5

 D36AA6

 D3FFEE

 D3559D

 D3FFF7

 D33F94

 D3FFFF

 D32A8B

 D31582

 D30079

Harmonies

Analogous

The Analogous color harmony consists of three colors that are next to each other on the color wheel.



CAC0D2



D3BECA



D8BDC0

Triad

The Triadic color harmony groups three colors that are evenly spaced from another and form a triangle on the color wheel.



D3BECA



C8C4B1



ADC8CF

Complementary

The Complementary color scheme is a pair of colors which are on the opposite of each other on the color wheel.



D3BECA



BED3C7

Split Complementary

Split-complementary colors differ from the complementary color scheme. The scheme consists of three colors, the original color and two neighbors of the complement color.



ADC9C7



D3BECA



BDC7B5

Square

The Square scheme is like the rectangle color scheme, but the four colors are evenly spaced on the color wheel.



D3BECA



D1C1B2



B3C9BD



B4C6D5

Rectangle

The Rectangle color scheme consists of four colors that form a rectangle on the color wheel.



D3BECA



D8BEBA



B3C9BD



ADC9CD

Sweetspot

The Sweet Spot groups the original color and five complimentary colors.



D3BECA



FFF7FC



C7BED3



807A7D



000000



808080

Same Dimension

The Same Dimension uses a secret algorithm to generate beautiful new colors.



D3BECA



FFE0F2



D3BEC0



695E64



A80060



290017

Inverse Universe

The Inverse Universe completely reimagines the original color for something new.



D3BECA



FFE0F2



BED3D1



695E64



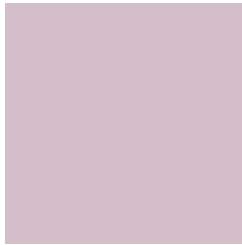
A80060



290017

Previews

White Background



This preview shows how the Hex color D3BECA looks on a white background.

Color Contrast Check

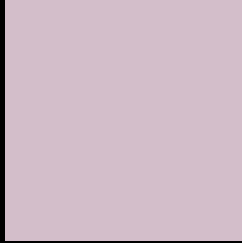
Large Text (above 18pt) WCAG AA × Fail

Any Text WCAG AA × Fail

Large Text (above 18pt) WCAG AAA × Fail

Any Text WCAG AAA × Fail

Black Background



This preview shows how the Hex color D3BECA looks on a black background.

Color Contrast Check

Large Text (above 18pt) WCAG AA ✓ Pass

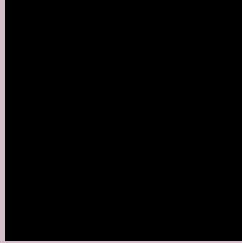
Any Text WCAG AA ✓ Pass

Large Text (above 18pt) WCAG AAA ✓ Pass

Any Text WCAG AAA ✓ Pass

If you want to check with other color combinations, try the [Color Contrast Checker](#).

Hex D3BECA Background



This preview shows how black text looks on a background with the Hex color D3BECA.



This preview shows how white text looks on a background with the Hex color D3BECA.

Color Blindness Simulation

Color vision deficiency is a very complex topic, and I could not describe the different causes any better than Wikipedia does, so if you want to learn more, you should check out their [article about color blindness](#).

Dichromacy



Original Color
D3BECA

Protanopia
C5C3CD

Deuteranopia
D4BECA

Trichromacy



Original Color
D3BECA

Protanomaly
CAC1CC

Deuteranomaly
D4BECA

Tritanomaly
D3BECB

Monochromacy



Original Color
D3BECA

Achromatopsia
C6C6C6

Achromatomaly
CBC3C7

CSS Examples

Text

The CSS property to change the color of the text to Hex D3BECA is called "color". The color property can be set on classes, ids or directly on the HTML element.

This example shows how text in the color #D3BECA looks like.

```
.text, #text, p{  
    color:#D3BECA  
}
```

If you want to add a text shadow in that color use the text-shadow property, you can generate a text shadow directly with our [CSS Text Shadow Generator](#).

Here you see how black text with a 4 pixel #D3BECA colored shadow looks like.

```
.shadow{ text-shadow: 4px 4px 2px #D3BECA
}
```

Border

The CSS property to change the border of an element to Hex D3BECA is called "border". The border property can be set on classes, ids or directly on the HTML element.

This example shows the color as border, it can be applied via the CSS property "border" or "border-color".

```
.border, #border, table{ border:4px solid
#D3BECA }
```

If only the border color should be changed use the property `border-color`.

```
.border{ border-color:#D3BECA }
```

If you want to add a box shadow in that color use:

Here you see how a box with a 4 pixel #D3BECA colored shadow looks like.

```
.boxshadow{ -moz-box-shadow:4px 4px 4px  
4px #D3BECA; -webkit-box-shadow:4px 4px  
4px 4px #D3BECA; box-shadow:4px 4px 4px  
4px #D3BECA }
```

Background

The CSS property to change the background color of an element to Hex D3BECA is called "background". The background property can be set on classes, ids or directly on the HTML element.

```
.background, #background, body{  
background:#D3BECA }
```

If only the background color should be changed can be used:

```
.background{ background-color:#D3BECA }
```

This example shows the color as background, it is applied via the CSS property "background".

To optimize and compress your CSS code, you can use our [online CSS compressor and optimizer](#) based on csstidy. If you want to create a linear or radial gradient as background or border, check our [CSS Gradient Generator](#).

Hey! You found this booklet interesting? Support Converting Colors with the new Membership Option!

The pro membership hides all ads, plus gives you double the colors in the color bucket, and more awesome pro features!

[Learn more, Memberships starting at \\$2.50/m!](#)

**Follow me
on Twitter!**

@ConvertingColor