

Converting Colors

Hex(D3BFAF)

Have a look what the booklet for
Hex(D3BFAF) contains.

Hex(D3BFAF)	3
<i>Conversions</i>	4
<i>Details</i>	6
<i>Harmonies</i>	11
<i>Previews</i>	23
<i>Color Blindness Simulation</i>	26
<i>CSS Examples</i>	29

Color

Hex(D3BFAF)

Conversions

Conversions Part 1

Format	Color
Hex	D3BFAF
RGB	211, 191, 175
RGB Percent	83%, 75%, 69%
CMY	0.1725, 0.2510, 0.3137
CMYK	0.00, 0.09, 0.17, 0.17
HSL	27°, 29%, 76%
HSV	27°, 17%, 83%
XYZ	53.2326, 54.2056, 48.2145
YIQ	195.1560, 17.0560, -0.7360

Conversions

Conversions Part 2

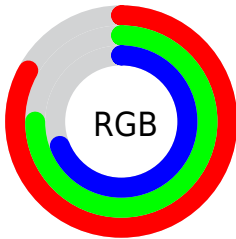
Format	Color
R _Y B	211, 204, 175
Decimal	13877167
CIE Lab	78.58, 4.47, 10.63
CIE LCh	79, 11.530, 67.212
Yxy	54.2056, 0.3420, 0.3482
Android (android.graphics.Color)	4292067247 (0xFFD3BFAF)
YUV	195.1560, -9.9369, 13.8952
Hunter-Lab	73.6245, 0.2179, 12.7098

Details

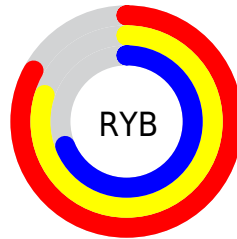
The Hex color **D3BFAF** is a light color, and the websafe version is hex **CCCCCC**. A complement of this color would be **AFC3D3**, and the grayscale version is **C3C3C3**.

A 20% lighter version of the original color is **FFF7E7**, and **9C8A7B** is the 20% darker color. If you saturate the color by 10%, you get **D3B39A**, and if you desaturate by 10%, it is **D3CBC4**.

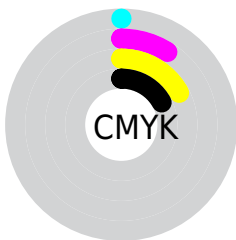
Distribution



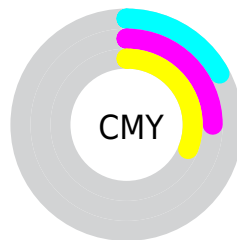
- Red (83%)
- Green (75%)
- Blue (69%)



- Red (83%)
- Yellow (80%)
- Blue (69%)



- Cyan (0%)
- Magenta (9%)
- Yellow (17%)
- Black (17%)



- Cyan (17%)
- Magenta (25%)
- Yellow (31%)

Brightness & Saturation Gradients

These gradients show how the Hex color D3BFAF changes by changing the brightness by 10 percent. The first figure shows a shift by +10% for each color and the second figure -10%.

Similar to the brightness gradients but the following saturation gradients show a change of the Hex color D3BFAF by changing the saturation by 10% instead.

 D3BFAF

 D3BFAF

FFFFFF

 B7A494

 FFF7E7

 9C8A7B

 827062

 69584A

 504133

 392B1E

 231606

 000000

 D3BFAF

 D3BFAF

 D3B39A

 D3CBC4

 D3A885

 D3D6D9

 D39C70

 D3E2EE

 D3905B

 D3EEFF

 D38446

 D3FAFF

 D37930

 D3FFFF

 D36D1B

 D36106

 D35E00

Harmonies

Analogous

The Analogous color harmony consists of three colors that are next to each other on the color wheel.



D9BCB6



D3BFAF



C9C2AD

Triad

The Triadic color harmony groups three colors that are evenly spaced from another and form a triangle on the color wheel.



D3BFAF



A9C9C5



C8BFD4

Complementary

The Complementary color scheme is a pair of colors which are on the opposite of each other on the color wheel.



D3BFAF



AFC3D3

Split Complementary

Split-complementary colors differ from the complementary color scheme. The scheme consists of three colors, the original color and two neighbors of the complement color.



BAC2D7



D3BFAF



A8C8CF

Square

The Square scheme is like the rectangle color scheme, but the four colors are evenly spaced on the color wheel.



D3BFAF



B1C8BA



AFC6D6



D3BCCB

Rectangle

The Rectangle color scheme consists of four colors that form a rectangle on the color wheel.



D3BFAF



C1C5AF



AFC6D6



C3C0D5

Sweetspot

The Sweet Spot groups the original color and five complimentary colors.



D3BFAF



FFF8F2



D3AFC3



807B78



000000



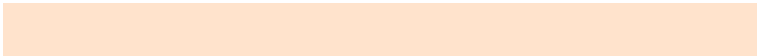
808080

Same Dimension

The Same Dimension uses a secret algorithm to generate beautiful new colors.



D3BFAF



FFE3CC



D3D1AF



69635E



A84B00



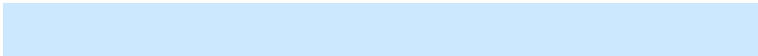
291200

Inverse Universe

The Inverse Universe completely reimagines the original color for something new.



AFC3D3



CCE8FF



AFB1D3



5E6469



005DA8



001729

Previews

White Background



This preview shows how the Hex color D3BFAF looks on a white background.

Color Contrast Check

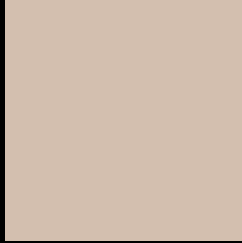
Large Text (above 18pt) WCAG AA × Fail

Any Text WCAG AA × Fail

Large Text (above 18pt) WCAG AAA × Fail

Any Text WCAG AAA × Fail

Black Background



This preview shows how the Hex color D3BFAF looks on a black background.

Color Contrast Check

Large Text (above 18pt) WCAG AA ✓ Pass

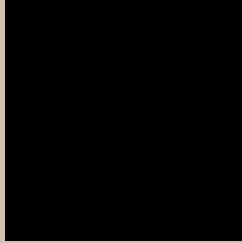
Any Text WCAG AA ✓ Pass

Large Text (above 18pt) WCAG AAA ✓ Pass

Any Text WCAG AAA ✓ Pass

If you want to check with other color combinations, try the [Color Contrast Checker](#).

Hex D3BFAF Background



This preview shows how black text looks on a background with the Hex color D3BFAF.

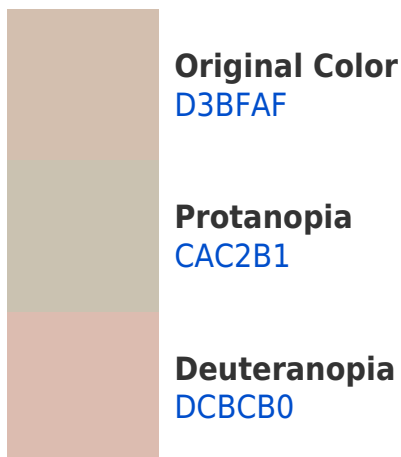


This preview shows how white text looks on a background with the Hex color D3BFAF.

Color Blindness Simulation

Color vision deficiency is a very complex topic, and I could not describe the different causes any better than Wikipedia does, so if you want to learn more, you should check out their [article about color blindness](#).

Dichromacy





Tritanopia
D6BBCA

Trichromacy



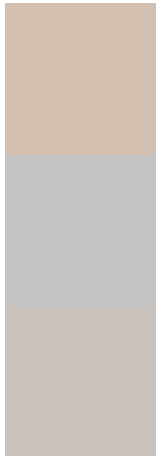
Original Color
D3BFAF

Protanomaly
CDC1B0

Deuteranomaly
D9BDB0

Tritanomaly
D5BCC0

Monochromacy



Original Color
D3BFAF

Achromatopsia
C3C3C3

Achromatomaly
C9C2BC

CSS Examples

Text

The CSS property to change the color of the text to Hex D3BFAF is called "color". The color property can be set on classes, ids or directly on the HTML element.

This example shows how text in the color #D3BFAF looks like.

```
.text, #text, p{  
    color:#D3BFAF  
}
```

If you want to add a text shadow in that color use the text-shadow property, you can generate a text shadow directly with our [CSS Text Shadow Generator](#).

Here you see how black text with a 4 pixel #D3BFAF colored shadow looks like.

```
.shadow{ text-shadow: 4px 4px 2px #D3BFAF
}
```

Border

The CSS property to change the border of an element to Hex D3BFAF is called "border". The border property can be set on classes, ids or directly on the HTML element.

This example shows the color as border, it can be applied via the CSS property "border" or "border-color".

```
.border, #border, table{ border:4px solid
#D3BFAF }
```

If only the border color should be changed use the property `border-color`.

```
.border{ border-color:#D3BFAF }
```

If you want to add a box shadow in that color use:

Here you see how a box with a 4 pixel #D3BFAF colored shadow looks like.

```
.boxshadow{ -moz-box-shadow:4px 4px 4px  
4px #D3BFAF; -webkit-box-shadow:4px 4px  
4px 4px #D3BFAF; box-shadow:4px 4px 4px  
4px #D3BFAF }
```

Background

The CSS property to change the background color of an element to Hex D3BFAF is called "background". The background property can be set on classes, ids or directly on the HTML element.

```
.background, #background, body{  
background:#D3BFAF }
```

If only the background color should be changed can be used:

```
.background{ background-color:#D3BFAF }
```

This example shows the color as background, it is applied via the CSS property "background".

To optimize and compress your CSS code, you can use our [online CSS compressor and optimizer](#) based on csstidy. If you want to create a linear or radial gradient as background or border, check our [CSS Gradient Generator](#).

Hey! You found this booklet interesting? Support Converting Colors with the new Membership Option!

The pro membership hides all ads, plus gives you double the colors in the color bucket, and more awesome pro features!

[Learn more, Memberships starting at \\$2.50/m!](#)

**Follow me
on Twitter!**

@ConvertingColor