

Converting Colors

Hex(D3C61D)

Have a look what the booklet for
Hex(D3C61D) contains.

Hex(D3C61D)	3
<i>Conversions</i>	4
<i>Details</i>	6
<i>Harmonies</i>	11
<i>Previews</i>	23
<i>Color Blindness Simulation</i>	26
<i>CSS Examples</i>	29

Color

Hex(D3C61D)

Conversions

Conversions Part 1

Format	Color
Hex	D3C61D
RGB	211, 198, 29
RGB Percent	83%, 78%, 11%
CMY	0.1725, 0.2235, 0.8863
CMYK	0.00, 0.06, 0.86, 0.17
HSL	56°, 76%, 47%
HSV	56°, 86%, 83%
XYZ	47.2798, 54.3258, 9.1564
YIQ	182.6210, 61.9970, -49.8030

Conversions

Conversions Part 2

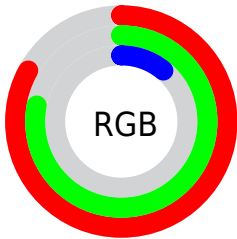
Format	Color
R _Y B	43, 211, 29
Decimal	13878813
CIE Lab	78.65, -11.81, 75.57
CIE LCh	79, 76.486, 98.882
Yxy	54.3258, 0.4269, 0.4905
Android (android.graphics.Color)	4292068893 (0xFFD3C61D)
YUV	182.6210, -75.7352, 24.8884
Hunter-Lab	73.7060, -14.4840, 44.2287

Details

The Hex color **D3C61D** is a dark color, and the websafe version is hex **CCCC33**. The color can be described as middle washed yellow. A complement of this color would be **1D2AD3**, and the grayscale version is **B7B7B7**.

A 20% lighter version of the original color is **FFFE5E**, and **989100** is the 20% darker color. If you saturate the color by 10%, you get **D3C408**, and if you desaturate by 10%, it is **D3C832**.

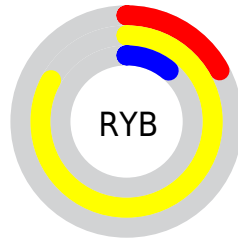
Distribution



Red (83%)

Green (78%)

Blue (11%)



Red (17%)

Yellow (83%)

Blue (11%)

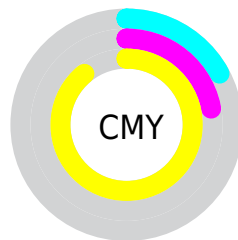


Cyan (0%)

Magenta (6%)

Yellow (86%)

Black (17%)



Cyan (17%)

Magenta (22%)

Yellow (89%)

Brightness & Saturation Gradients

These gradients show how the Hex color D3C61D changes by changing the brightness by 10 percent. The first figure shows a shift by +10% for each color and the second figure -10%.

Similar to the brightness gradients but the following saturation gradients show a change of the Hex color D3C61D by changing the saturation by 10% instead.

 D3C61D

 D3C61D

FFFFFF

 B5AB00

 FFFE5E

 989100

 FFFF7B

 7B7700

 FFFF97

 5F5F00


 FFFFB4

 444700

 FFFFD1

 2A3100

 FFFFEF

 111D00

 000000

 D3C61D

 D3C61D

 D3C408

 D3C832

 D3C400

 D3C947

 D3CB5C

 D3CC71

 D3CE86

 D3CF9C

 D3D1B1

 D3D2C6

 D3D4DB

Harmonies

Analogous

The Analogous color harmony consists of three colors that are next to each other on the color wheel.



FFAC35



D3C61D



86D74A

Triad

The Triadic color harmony groups three colors that are evenly spaced from another and form a triangle on the color wheel.



D3C61D



00E2FF



FF88F7

Complementary

The Complementary color scheme is a pair of colors which are on the opposite of each other on the color wheel.



D3C61D



1D2AD3

Split Complementary

Split-complementary colors differ from the complementary color scheme. The scheme consists of three colors, the original color and two neighbors of the complement color.



E1A6FF



D3C61D



00D8FF

Square

The Square scheme is like the rectangle color scheme, but the four colors are evenly spaced on the color wheel.



D3C61D



00E4D6



48C4FF



FF7DB0

Rectangle

The Rectangle color scheme consists of four colors that form a rectangle on the color wheel.



D3C61D



2DDE75



48C4FF



FF91FF

Sweetspot

The Sweet Spot groups the original color and five complimentary colors.



D3C61D



FFFABD



D31D2C



807D58



000000



808080

Same Dimension

The Same Dimension uses a secret algorithm to generate beautiful new colors.



D3C61D



FFED00



87D31D



69685E



A89C00



292600

Inverse Universe

The Inverse Universe completely reimagines the original color for something new.



1D2AD3



0012FF



691DD3



5E5F69



000CA8



000329

Previews

White Background



This preview shows how the Hex color D3C61D looks on a white background.

Color Contrast Check

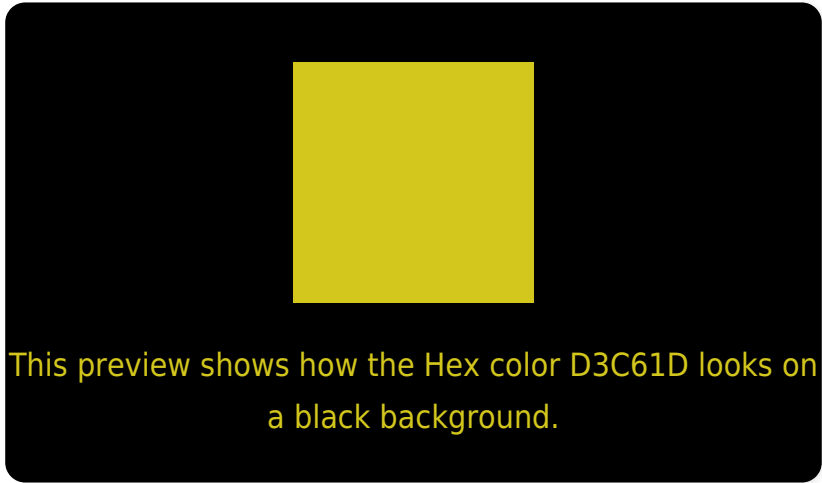
Large Text (above 18pt) WCAG AA × Fail

Any Text WCAG AA × Fail

Large Text (above 18pt) WCAG AAA × Fail

Any Text WCAG AAA × Fail

Black Background



Color Contrast Check

Large Text (above 18pt) WCAG AA ✓ Pass

Any Text WCAG AA ✓ Pass

Large Text (above 18pt) WCAG AAA ✓ Pass

Any Text WCAG AAA ✓ Pass

If you want to check with other color combinations, try the [Color Contrast Checker](#).

Hex D3C61D Background



This preview shows how black text looks on a background with the Hex color D3C61D.



This preview shows how white text looks on a background with the Hex color D3C61D.

Color Blindness Simulation

Color vision deficiency is a very complex topic, and I could not describe the different causes any better than Wikipedia does, so if you want to learn more, you should check out their [article about color blindness](#).

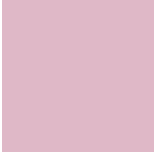
Dichromacy



Original Color
D3C61D

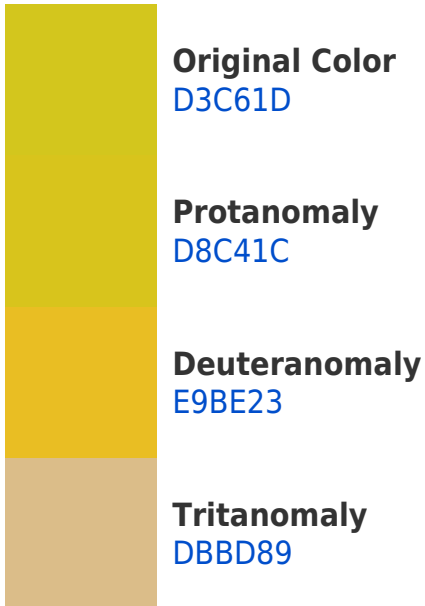
Protanopia
DBC31C

Deuteranopia
F5B927



Tritanopia
DFB8C7

Trichromacy



Monochromacy



CSS Examples

Text

The CSS property to change the color of the text to Hex D3C61D is called "color". The color property can be set on classes, ids or directly on the HTML element.

This example shows how text in the color #D3C61D looks like.

```
.text, #text, p{  
    color:#D3C61D  
}
```

If you want to add a text shadow in that color use the text-shadow property, you can generate a text shadow directly with our [CSS Text Shadow Generator](#).

Here you see how black text with a 4 pixel #D3C61D colored shadow looks like.

```
.shadow{ text-shadow: 4px 4px 2px #D3C61D
}
```

Border

The CSS property to change the border of an element to Hex D3C61D is called "border". The border property can be set on classes, ids or directly on the HTML element.

This example shows the color as border, it can be applied via the CSS property "border" or "border-color".

```
.border, #border, table{ border:4px solid
#D3C61D }
```

If only the border color should be changed use the property `border-color`.

```
.border{ border-color:#D3C61D }
```

If you want to add a box shadow in that color use:

Here you see how a box with a 4 pixel #D3C61D colored shadow looks like.

```
.boxshadow{ -moz-box-shadow:4px 4px 4px  
4px #D3C61D; -webkit-box-shadow:4px 4px  
4px 4px #D3C61D; box-shadow:4px 4px 4px  
4px #D3C61D }
```

Background

The CSS property to change the background color of an element to Hex D3C61D is called "background". The background property can be set on classes, ids or directly on the HTML element.

```
.background, #background, body{  
background:#D3C61D }
```

If only the background color should be changed can be used:

```
.background{ background-color:#D3C61D }
```

This example shows the color as background, it is applied via the CSS property "background".

To optimize and compress your CSS code, you can use our [online CSS compressor and optimizer](#) based on csstidy. If you want to create a linear or radial gradient as background or border, check our [CSS Gradient Generator](#).

Hey! You found this booklet interesting? Support Converting Colors with the new Membership Option!

The pro membership hides all ads, plus gives you double the colors in the color bucket, and more awesome pro features!

[Learn more, Memberships starting at \\$2.50/m!](#)

**Follow me
on Twitter!**

@ConvertingColor