

# Converting Colors

Hex(D43C6A)

Have a look what the booklet for  
Hex(D43C6A) contains.

<b>Hex(D43C6A)</b> .....	3
<i><b>Conversions</b></i> .....	4
<i><b>Details</b></i> .....	6
<i><b>Harmonies</b></i> .....	11
<i><b>Previews</b></i> .....	23
<i><b>Color Blindness Simulation</b></i> .....	26
<i><b>CSS Examples</b></i> .....	29

# Color

**Hex(D43C6A)**

# Conversions

## Conversions Part 1

<b>Format</b>	<b>Color</b>
Hex	D43C6A
RGB	212, 60, 106
RGB Percent	83%, 24%, 42%
CMY	0.1686, 0.7647, 0.5843
CMYK	0.00, 0.72, 0.50, 0.17
HSL	342°, 64%, 53%
HSV	342°, 72%, 83%
XYZ	31.3688, 18.2694, 15.5087
YIQ	110.6920, 75.8260, 46.5300

# Conversions

## Conversions Part 2

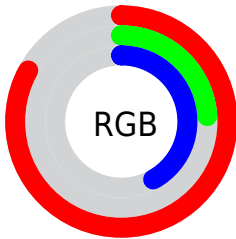
<b>Format</b>	<b>Color</b>
<b>R<sub>YB</sub></b>	212, 60, 106
Decimal	13909098
CIE <sub>Lab</sub>	49.82, 61.82, 9.04
CIE <sub>LCh</sub>	50, 62.478, 8.316
Yxy	18.2694, 0.4815, 0.2804
Android (android.graphics.Color)	4292099178 (0xFFD43C6A)
YUV	110.6920, -2.3132, 88.8471
Hunter-Lab	42.7427, 56.2010, 8.4072

# Details

The Hex color **D43C6A** is a dark color, and the websafe version is hex **CC3366**. The color can be described as dark muted rose. A complement of this color would be **3CD4A6**, and the grayscale version is **6F6F6F**.

A 20% lighter version of the original color is **FF769D**, and **98003B** is the 20% darker color. If you saturate the color by 10%, you get **D4275B**, and if you desaturate by 10%, it is **D45179**.

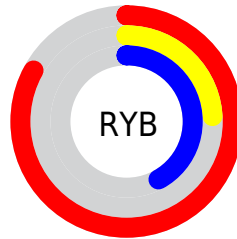
# Distribution



Red (83%)

Green (24%)

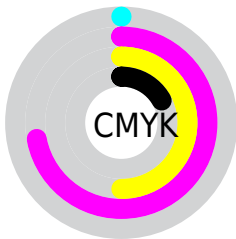
Blue (42%)



Red (83%)

Yellow (24%)

Blue (42%)

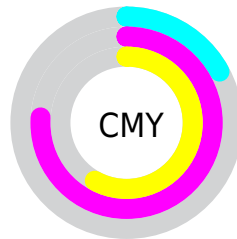


Cyan (0%)

Magenta (72%)

Yellow (50%)

Black (17%)



Cyan (17%)

Magenta (76%)

Yellow (58%)

# Brightness & Saturation Gradients

These gradients show how the Hex color D43C6A changes by changing the brightness by 10 percent. The first figure shows a shift by +10% for each color and the second figure -10%.

Similar to the brightness gradients but the following saturation gradients show a change of the Hex color D43C6A by changing the saturation by 10% instead.



 D43C6A

 D43C6A

FFFFFF

 B61852

 FF769D

 98003B

 FF93B8

 7A0026

 FFAFD3

 5C0011

 FFCCF0

 420003

 FFEAFF

 200001

 000000

 D43C6A

 D43C6A

 D4275B

 D45179

 D4124C

 D46688

 D40040

 D47C96

 D491A5

 D4A6B4

 D4BBC3

 D4D0D1

 D4E6E0

 D4FBEF

# Harmonies

## Analogous

The Analogous color harmony consists of three colors that are next to each other on the color wheel.



C0479F



D43C6A



CB4D37

# Triad

The Triadic color harmony groups three colors that are evenly spaced from another and form a triangle on the color wheel.



D43C6A



478515



0087D9

# Complementary

The Complementary color scheme is a pair of colors which are on the opposite of each other on the color wheel.



D43C6A



3CD4A6

# Split Complementary

Split-complementary colors differ from the complementary color scheme. The scheme consists of three colors, the original color and two neighbors of the complement color.



008DB7



D43C6A



008C4D

# Square

The Square scheme is like the rectangle color scheme, but the four colors are evenly spaced on the color wheel.



D43C6A



817900



008F84



0078E0

# Rectangle

The Rectangle color scheme consists of four colors that form a rectangle on the color wheel.



D43C6A



B95D15



008F84



008AD1



# Sweetspot

The Sweet Spot groups the original color and five complimentary colors.



D43C6A



FFC7D8



A43CD4



805E68



000000



808080



# Same Dimension

The Same Dimension uses a secret algorithm to generate beautiful new colors.



D43C6A



FF2466



D4583C



6B6064



AB0034



2B000D



# Inverse Universe

The Inverse Universe completely reimagines the original color for something new.



D43C6A



FF2466



3CB8D4



6B6064



AB0034

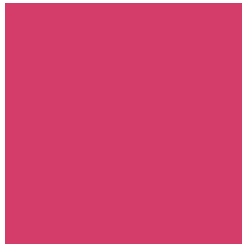


2B000D



# Previews

## White Background



This preview shows how the Hex color D43C6A looks on a white background.

## Color Contrast Check

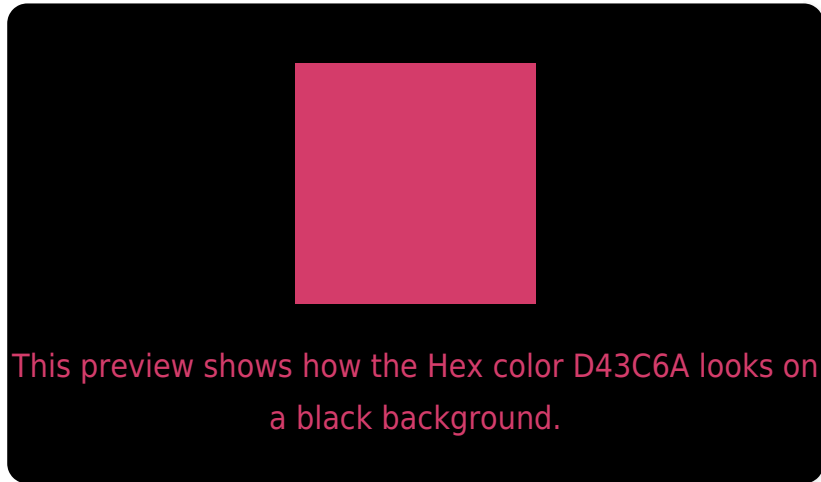
Large Text (above 18pt) WCAG AA ✓ Pass

Any Text WCAG AA ✓ Pass

Large Text (above 18pt) WCAG AAA ✓ Pass

Any Text WCAG AAA × Fail

# Black Background



## Color Contrast Check

Large Text (above 18pt) WCAG AA ✓ Pass

Any Text WCAG AA ✓ Pass

Large Text (above 18pt) WCAG AAA ✓ Pass

Any Text WCAG AAA × Fail

If you want to check with other color combinations, try the [Color Contrast Checker](#).



## Hex D43C6A Background



This preview shows how black text looks on a background with the Hex color D43C6A.

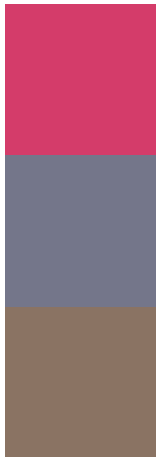


This preview shows how white text looks on a background with the Hex color D43C6A.

# Color Blindness Simulation

Color vision deficiency is a very complex topic, and I could not describe the different causes any better than Wikipedia does, so if you want to learn more, you should check out their [article about color blindness](#).

## Dichromacy



**Original Color**  
D43C6A

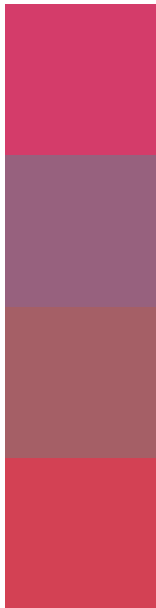
**Protanopia**  
74768A

**Deuteranopia**  
8A7363



**Tritanopia**  
D24447

# Trichromacy



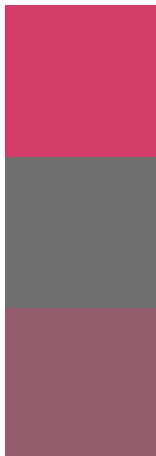
**Original Color**  
D43C6A

**Protanomaly**  
97617E

**Deuteranomaly**  
A55F66

**Tritanomaly**  
D34154

# Monochromacy



**Original Color**  
D43C6A

**Achromatopsia**  
6F6F6F

**Achromatomaly**  
945C6D

# CSS Examples

## Text

The CSS property to change the color of the text to Hex D43C6A is called "color". The color property can be set on classes, ids or directly on the HTML element.

This example shows how text in the color #D43C6A looks like.

```
.text, #text, p{  
    color:#D43C6A  
}
```

If you want to add a text shadow in that color use the text-shadow property, you can generate a text shadow directly with our [CSS Text Shadow Generator](#).

Here you see how black text with a 4 pixel #D43C6A colored shadow looks like.

```
.shadow{ text-shadow: 4px 4px 2px #D43C6A
}
```

## Border

The CSS property to change the border of an element to Hex D43C6A is called "border". The border property can be set on classes, ids or directly on the HTML element.

This example shows the color as border, it can be applied via the CSS property "border" or "border-color".

```
.border, #border, table{ border:4px solid
#D43C6A }
```

If only the border color should be changed use the property `border-color`.

```
.border{ border-color:#D43C6A }
```

If you want to add a box shadow in that color use:

Here you see how a box with a 4 pixel #D43C6A colored shadow looks like.

```
.boxshadow{ -moz-box-shadow:4px 4px 4px  
4px #D43C6A; -webkit-box-shadow:4px 4px  
4px 4px #D43C6A; box-shadow:4px 4px 4px  
4px #D43C6A }
```

# Background

The CSS property to change the background color of an element to Hex D43C6A is called "background". The background property can be set on classes, ids or directly on the HTML element.

```
.background, #background, body{  
background:#D43C6A }
```

If only the background color should be changed can be used:

```
.background{ background-color:#D43C6A }
```

This example shows the color as background, it is applied via the CSS property "background".

To optimize and compress your CSS code, you can use our [online CSS compressor and optimizer](#) based on csstidy. If you want to create a linear or radial gradient as background or border, check our [CSS Gradient Generator](#).



Hey! You found this booklet interesting? Support Converting Colors with the new Membership Option!

The pro membership hides all ads, plus gives you double the colors in the color bucket, and more awesome pro features!

**[Learn more, Memberships starting at \\$2.50/m!](#)**

**Follow me  
on Twitter!**

@ConvertingColor