

Converting Colors

Hex(D4517A)

Have a look what the booklet for
Hex(D4517A) contains.

Hex(D4517A)	3
<i>Conversions</i>	4
<i>Details</i>	6
<i>Harmonies</i>	11
<i>Previews</i>	23
<i>Color Blindness Simulation</i>	26
<i>CSS Examples</i>	29

Color

Hex(D4517A)

Conversions

Conversions Part 1

Format	Color
Hex	D4517A
RGB	212, 81, 122
RGB Percent	83%, 32%, 48%
CMY	0.1686, 0.6824, 0.5216
CMYK	0.00, 0.62, 0.42, 0.17
HSL	341°, 60%, 57%
HSV	341°, 62%, 83%
XYZ	33.6067, 21.2870, 20.7499
YIQ	124.8430, 64.9150, 40.5230

Conversions

Conversions Part 2

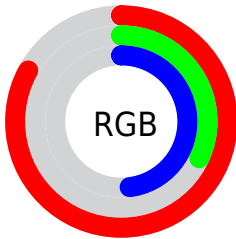
Format	Color
R_{YB}	212, 81, 122
Decimal	13914490
CIE _{Lab}	53.26, 55.02, 4.32
CIE _{LCh}	53, 55.188, 4.495
Yxy	21.2870, 0.4443, 0.2814
Android (android.graphics.Color)	4292104570 (0xFFD4517A)
YUV	124.8430, -1.4016, 76.4367
Hunter-Lab	46.1379, 49.2774, 5.6316

Details

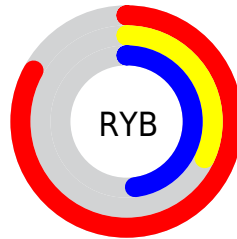
The Hex color **D4517A** is a dark color, and the websafe version is hex **CC3366**. The color can be described as middle muted rose. A complement of this color would be **51D4AB**, and the grayscale version is **7D7D7D**.

A 20% lighter version of the original color is **FF88AE**, and **99124A** is the 20% darker color. If you saturate the color by 10%, you get **D43C6B**, and if you desaturate by 10%, it is **D46689**.

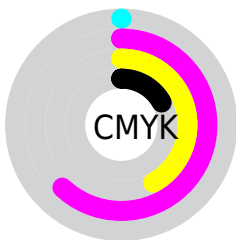
Distribution



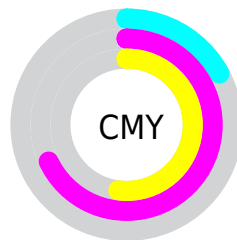
- Red (83%)
- Green (32%)
- Blue (48%)



- Red (83%)
- Yellow (32%)
- Blue (48%)



- Cyan (0%)
- Magenta (62%)
- Yellow (42%)
- Black (17%)



- Cyan (17%)
- Magenta (68%)
- Yellow (52%)

Brightness & Saturation Gradients

These gradients show how the Hex color D4517A changes by changing the brightness by 10 percent. The first figure shows a shift by +10% for each color and the second figure -10%.

Similar to the brightness gradients but the following saturation gradients show a change of the Hex color D4517A by changing the saturation by 10% instead.

 D4517A

 D4517A

FFFFFF

 B63461

 FF88AE

 99124A

 FFA4CA

 7C0033

 FFC1E6

 5F001F

 FFDEFF

 450004

 FFFBFF

 270001

 000000

 D4517A

 D4517A

 D43C6B

 D46689

 D4275D

 D47B97

 D4114E

 D491A6

 D40042

 D4A6B4

 D4BBC3

 D4D0D1

 D4E5E0

 D4FBF6

 D4FFFD

Harmonies

Analogous

The Analogous color harmony consists of three colors that are next to each other on the color wheel.



BE5BA9



D4517A



D05A4C

Triad

The Triadic color harmony groups three colors that are evenly spaced from another and form a triangle on the color wheel.



D4517A



608C2A



008FD5

Complementary

The Complementary color scheme is a pair of colors which are on the opposite of each other on the color wheel.



D4517A



51D4AB

Split Complementary

Split-complementary colors differ from the complementary color scheme. The scheme consists of three colors, the original color and two neighbors of the complement color.



0095B4



D4517A



009354

Square

The Square scheme is like the rectangle color scheme, but the four colors are evenly spaced on the color wheel.



D4517A



917F11



009685



0082DE

Rectangle

The Rectangle color scheme consists of four colors that form a rectangle on the color wheel.



D4517A



C16732



009685



0091CC

Sweetspot

The Sweet Spot groups the original color and five complimentary colors.



D4517A



FFCFDE



AB51D4



80626B



000000



808080

Same Dimension

The Same Dimension uses a secret algorithm to generate beautiful new colors.



D4517A



FF427D



D46951



6B6064



AB0035



2B000E

Inverse Universe

The Inverse Universe completely reimagines the original color for something new.



D4517A



FF427D



51BCD4



6B6064



AB0035



2B000E

Previews

White Background



This preview shows how the Hex color D4517A looks on a white background.

Color Contrast Check

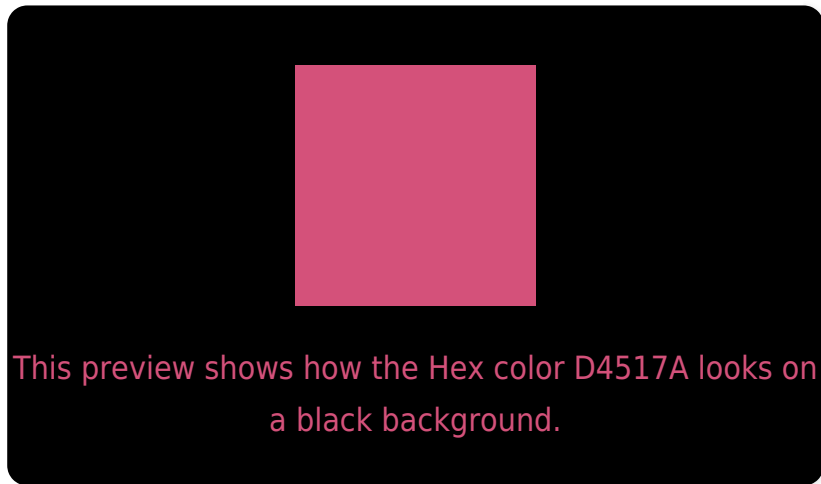
Large Text (above 18pt) WCAG AA ✓ Pass

Any Text WCAG AA × Fail

Large Text (above 18pt) WCAG AAA × Fail

Any Text WCAG AAA × Fail

Black Background



Color Contrast Check

Large Text (above 18pt) WCAG AA ✓ Pass

Any Text WCAG AA ✓ Pass

Large Text (above 18pt) WCAG AAA ✓ Pass

Any Text WCAG AAA × Fail

If you want to check with other color combinations, try the [Color Contrast Checker](#).

Hex D4517A Background



This preview shows how black text looks on a background with the Hex color D4517A.




This preview shows how white text looks on a background with the Hex color D4517A.

Color Blindness Simulation

Color vision deficiency is a very complex topic, and I could not describe the different causes any better than Wikipedia does, so if you want to learn more, you should check out their [article about color blindness](#).

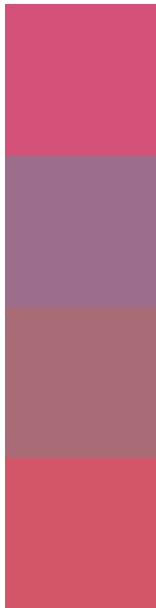
Dichromacy





Tritanopia
D2575D

Trichromacy



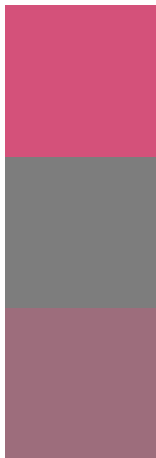
Original Color
D4517A

Protanomaly
9C6E8B

Deuteranomaly
A96C76

Tritanomaly
D35568

Monochromacy



Original Color
D4517A

Achromatopsia
7D7D7D

Achromatomaly
9D6D7C

CSS Examples

Text

The CSS property to change the color of the text to Hex D4517A is called "color". The color property can be set on classes, ids or directly on the HTML element.

This example shows how text in the color #D4517A looks like.

```
.text, #text, p{  
    color:#D4517A  
}
```

If you want to add a text shadow in that color use the text-shadow property, you can generate a text shadow directly with our [CSS Text Shadow Generator](#).

Here you see how black text with a 4 pixel #D4517A colored shadow looks like.

```
.shadow{ text-shadow: 4px 4px 2px #D4517A
}
```

Border

The CSS property to change the border of an element to Hex D4517A is called "border". The border property can be set on classes, ids or directly on the HTML element.

This example shows the color as border, it can be applied via the CSS property "border" or "border-color".

```
.border, #border, table{ border:4px solid
#D4517A }
```

If only the border color should be changed use the property `border-color`.

```
.border{ border-color:#D4517A }
```

If you want to add a box shadow in that color use:

Here you see how a box with a 4 pixel #D4517A colored shadow looks like.

```
.boxshadow{ -moz-box-shadow:4px 4px 4px  
4px #D4517A; -webkit-box-shadow:4px 4px  
4px 4px #D4517A; box-shadow:4px 4px 4px  
4px #D4517A }
```

Background

The CSS property to change the background color of an element to Hex D4517A is called "background". The background property can be set on classes, ids or directly on the HTML element.

```
.background, #background, body{  
background:#D4517A }
```

If only the background color should be changed can be used:

```
.background{ background-color:#D4517A }
```

This example shows the color as background, it is applied via the CSS property "background".

To optimize and compress your CSS code, you can use our [online CSS compressor and optimizer](#) based on csstidy. If you want to create a linear or radial gradient as background or border, check our [CSS Gradient Generator](#).

Hey! You found this booklet interesting? Support Converting Colors with the new Membership Option!

The pro membership hides all ads, plus gives you double the colors in the color bucket, and more awesome pro features!

[Learn more, Memberships starting at \\$2.50/m!](#)

**Follow me
on Twitter!**

@ConvertingColor