

Converting Colors

Hex(D47368)

Have a look what the booklet for
Hex(D47368) contains.

Hex(D47368)	3
<i>Conversions</i>	4
<i>Details</i>	6
<i>Harmonies</i>	11
<i>Previews</i>	23
<i>Color Blindness Simulation</i>	26
<i>CSS Examples</i>	29

Color

Hex(D47368)

Conversions

Conversions Part 1

Format	Color
Hex	D47368
RGB	212, 115, 104
RGB Percent	83%, 45%, 41%
CMY	0.1686, 0.5490, 0.5922
CMYK	0.00, 0.46, 0.51, 0.17
HSL	6°, 56%, 62%
HSV	6°, 51%, 83%
XYZ	35.7808, 27.2580, 16.4722
YIQ	142.7490, 61.3430, 17.1430

Conversions

Conversions Part 2

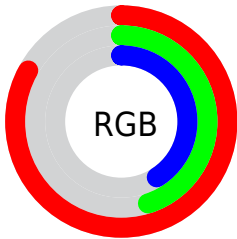
Format	Color
R _Y B	212, 116, 104
Decimal	13923176
CIE Lab	59.21, 36.84, 23.11
CIE LCh	59, 43.485, 32.101
Yxy	27.2580, 0.4500, 0.3428
Android (android.graphics.Color)	4292113256 (0xFFD47368)
YUV	142.7490, -19.1033, 60.7331
Hunter-Lab	52.2092, 30.9663, 17.8402

Details

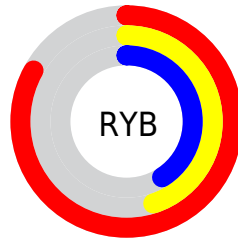
The Hex color **D47368** is a dark color, and the websafe version is hex **CC6666**. A complement of this color would be **68C9D4**, and the grayscale version is **8F8F8F**.

A 20% lighter version of the original color is **FFA89B**, and **994039** is the 20% darker color. If you saturate the color by 10%, you get **D46053**, and if you desaturate by 10%, it is **D4867D**.

Distribution



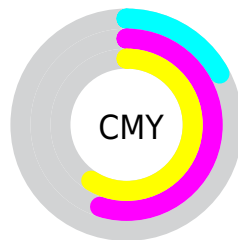
- Red (83%)
- Green (45%)
- Blue (41%)



- Red (83%)
- Yellow (45%)
- Blue (41%)



- Cyan (0%)
- Magenta (46%)
- Yellow (51%)
- Black (17%)



- Cyan (17%)
- Magenta (55%)
- Yellow (59%)

Brightness & Saturation Gradients

These gradients show how the Hex color D47368 changes by changing the brightness by 10 percent. The first figure shows a shift by +10% for each color and the second figure -10%.

Similar to the brightness gradients but the following saturation gradients show a change of the Hex color D47368 by changing the saturation by 10% instead.

 D47368

 D47368

FFFFFF

 B65950

 FFA89B

 994039

 FFC4B6

 7D2723

 FFE1D2

 610B0E

 FFFEEE

 450000

 2D0001

 000000

 D47368

 D47368

 D46053

 D4867D

 D44D3E

 D49992

 D43A28

 D4ACA8

 D42713

 D4BFBD

 D41600

 D4D2D2

 D4E5E7

 D4F8FC

 D4FFFF

Harmonies

Analogous

The Analogous color harmony consists of three colors that are next to each other on the color wheel.



D56E8D



D47368



C2804B

Triad

The Triadic color harmony groups three colors that are evenly spaced from another and form a triangle on the color wheel.



D47368



499F69



5092DB

Complementary

The Complementary color scheme is a pair of colors which are on the opposite of each other on the color wheel.



D47368



68C9D4

Split Complementary

Split-complementary colors differ from the complementary color scheme. The scheme consists of three colors, the original color and two neighbors of the complement color.



009CD1



D47368



00A290

Square

The Square scheme is like the rectangle color scheme, but the four colors are evenly spaced on the color wheel.



D47368



7B984B



00A1B6



9583CF

Rectangle

The Rectangle color scheme consists of four colors that form a rectangle on the color wheel.



D47368



AE8941



00A1B6



2C96DA

Sweetspot

The Sweet Spot groups the original color and five complimentary colors.



D47368



FFDDD9



D468C9



806B69



000000



808080

Same Dimension

The Same Dimension uses a secret algorithm to generate beautiful new colors.



D47368



FF7363



D4A968



6B6160



AB1100



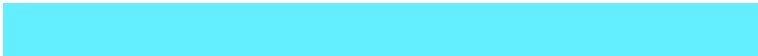
2B0400

Inverse Universe

The Inverse Universe completely reimagines the original color for something new.



68C9D4



63EFFF



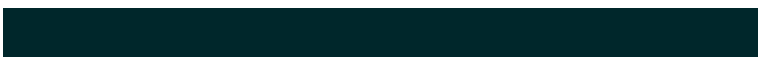
6893D4



606A6B



0099AB



00272B

Previews

White Background



This preview shows how the Hex color D47368 looks on a white background.

Color Contrast Check

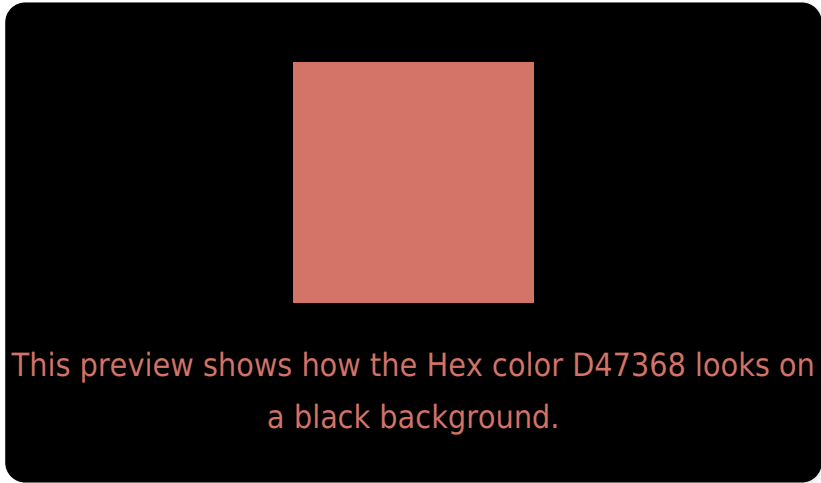
Large Text (above 18pt) WCAG AA ✓ Pass

Any Text WCAG AA × Fail

Large Text (above 18pt) WCAG AAA × Fail

Any Text WCAG AAA × Fail

Black Background



Color Contrast Check

Large Text (above 18pt) WCAG AA ✓ Pass

Any Text WCAG AA ✓ Pass

Large Text (above 18pt) WCAG AAA ✓ Pass

Any Text WCAG AAA × Fail

If you want to check with other color combinations, try the [Color Contrast Checker](#).

Hex D47368 Background



This preview shows how black text looks on a background with the Hex color D47368.



This preview shows how white text looks on a background with the Hex color D47368.

Color Blindness Simulation

Color vision deficiency is a very complex topic, and I could not describe the different causes any better than Wikipedia does, so if you want to learn more, you should check out their [article about color blindness](#).

Dichromacy



Original Color
D47368

Protanopia
978F75

Deuteranopia
AA8964

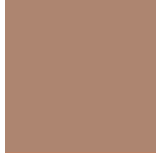


Tritanopia
D57179

Trichromacy



Original Color
D47368



Protanomaly
AD8570



Deuteranomaly
B98165

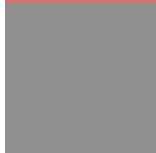


Tritanomaly
D57273

Monochromacy



Original Color
D47368



Achromatopsia
8F8F8F



Achromatomaly
A88581

CSS Examples

Text

The CSS property to change the color of the text to Hex D47368 is called "color". The color property can be set on classes, ids or directly on the HTML element.

This example shows how text in the color #D47368 looks like.

```
.text, #text, p{  
    color:#D47368  
}
```

If you want to add a text shadow in that color use the text-shadow property, you can generate a text shadow directly with our [CSS Text Shadow Generator](#).

Here you see how black text with a 4 pixel #D47368 colored shadow looks like.

```
.shadow{ text-shadow: 4px 4px 2px #D47368
}
```

Border

The CSS property to change the border of an element to Hex D47368 is called "border". The border property can be set on classes, ids or directly on the HTML element.

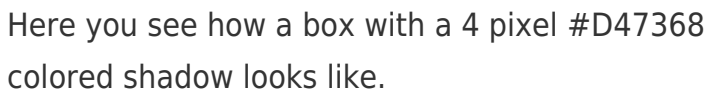
This example shows the color as border, it can be applied via the CSS property "border" or "border-color".

```
.border, #border, table{ border:4px solid
#D47368 }
```

If only the border color should be changed use the property `border-color`.

```
.border{ border-color:#D47368 }
```

If you want to add a box shadow in that color use:



Here you see how a box with a 4 pixel #D47368 colored shadow looks like.

```
.boxshadow{ -moz-box-shadow:4px 4px 4px  
4px #D47368; -webkit-box-shadow:4px 4px  
4px 4px #D47368; box-shadow:4px 4px 4px  
4px #D47368 }
```

Background

The CSS property to change the background color of an element to Hex D47368 is called "background". The background property can be set on classes, ids or directly on the HTML element.

```
.background, #background, body{  
background:#D47368 }
```

If only the background color should be changed can be used:

```
.background{ background-color:#D47368 }
```

This example shows the color as background, it is applied via the CSS property "background".

To optimize and compress your CSS code, you can use our [online CSS compressor and optimizer](#) based on csstidy. If you want to create a linear or radial gradient as background or border, check our [CSS Gradient Generator](#).

Hey! You found this booklet interesting? Support Converting Colors with the new Membership Option!

The pro membership hides all ads, plus gives you double the colors in the color bucket, and more awesome pro features!

[Learn more, Memberships starting at \\$2.50/m!](#)

**Follow me
on Twitter!**

@ConvertingColor