

Converting Colors

Hex(D48DBE)

Have a look what the booklet for
Hex(D48DBE) contains.

Hex(D48DBE)	3
<i>Conversions</i>	4
<i>Details</i>	6
<i>Harmonies</i>	11
<i>Previews</i>	23
<i>Color Blindness Simulation</i>	26
<i>CSS Examples</i>	29

Color

Hex(D48DBE)

Conversions

Conversions Part 1

Format	Color
Hex	D48DBE
RGB	212, 141, 190
RGB Percent	83%, 55%, 75%
CMY	0.1686, 0.4471, 0.2549
CMYK	0.00, 0.33, 0.10, 0.17
HSL	319°, 45%, 69%
HSV	319°, 33%, 83%
XYZ	45.9705, 36.7645, 53.3885
YIQ	167.8150, 26.5870, 30.2910

Conversions

Conversions Part 2

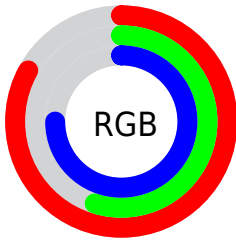
Format	Color
R _Y B	212, 141, 190
Decimal	13929918
CIE Lab	67.10, 34.29, -14.43
CIE LCh	67, 37.204, 337.172
Yxy	36.7645, 0.3377, 0.2701
Android (android.graphics.Color)	4292119998 (0xFFD48DBE)
YUV	167.8150, 10.9372, 38.7502
Hunter-Lab	60.6337, 29.2238, -9.7617

Details

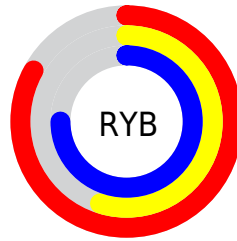
The Hex color **D48DBE** is a light color, and the websafe version is hex **CC99CC**. A complement of this color would be **8DD4A3**, and the grayscale version is **A8A8A8**.

A 20% lighter version of the original color is **FFC4F6**, and **9C5989** is the 20% darker color. If you saturate the color by 10%, you get **D478B7**, and if you desaturate by 10%, it is **D4A2C5**.

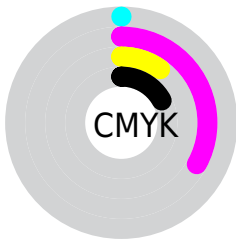
Distribution



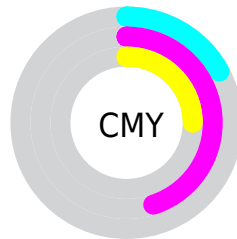
- Red (83%)
- Green (55%)
- Blue (75%)



- Red (83%)
- Yellow (55%)
- Blue (75%)



- Cyan (0%)
- Magenta (33%)
- Yellow (10%)
- Black (17%)



- Cyan (17%)
- Magenta (45%)
- Yellow (25%)

Brightness & Saturation Gradients

These gradients show how the Hex color D48DBE changes by changing the brightness by 10 percent. The first figure shows a shift by +10% for each color and the second figure -10%.

Similar to the brightness gradients but the following saturation gradients show a change of the Hex color D48DBE by changing the saturation by 10% instead.

 D48DBE

 D48DBE

FFFFFF

 B873A3

 FFC4F6

 9C5989

 FFE0FF

 81416F

 FFFDFD

 672857

 4E0F3F

 350029

 1F0015

 000000

 D48DBE

 D48DBE

 D478B7

 D4A2C5

 D463B1

 D4B7CB

 D44DAA

 D4CDD2

 D438A4

 D4E2D8

 D4239D

 D4F7DF

 D40E97

 D4FFE5

 D40092

 D4FFEC

 D4FFF3

 D4FFF9

Harmonies

Analogous

The Analogous color harmony consists of three colors that are next to each other on the color wheel.



B298D9



D48DBE



E4899C

Triad

The Triadic color harmony groups three colors that are evenly spaced from another and form a triangle on the color wheel.



D48DBE



B1A460



00B4CB

Complementary

The Complementary color scheme is a pair of colors which are on the opposite of each other on the color wheel.



D48DBE



8DD4A3

Split Complementary

Split-complementary colors differ from the complementary color scheme. The scheme consists of three colors, the original color and two neighbors of the complement color.



32B5AB



D48DBE



8DAD6D

Square

The Square scheme is like the rectangle color scheme, but the four colors are evenly spaced on the color wheel.



D48DBE



CF9866



64B388



43AEEO

Rectangle

The Rectangle color scheme consists of four colors that form a rectangle on the color wheel.



D48DBE



E48B86



64B388



07B5C1

Sweetspot

The Sweet Spot groups the original color and five complimentary colors.



D48DBE



FFE6F7



A28DD4



80707B



000000



808080

Same Dimension

The Same Dimension uses a secret algorithm to generate beautiful new colors.



D48DBE



FF99DF



D48D9B



6B6068



AB0076



2B001E

Inverse Universe

The Inverse Universe completely reimagines the original color for something new.



D48DBE



FF99DF



8DD4C6



6B6068



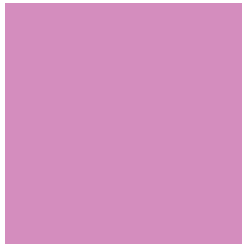
AB0076



2B001E

Previews

White Background



This preview shows how the Hex color D48DBE looks on a white background.

Color Contrast Check

Large Text (above 18pt) WCAG AA × Fail

Any Text WCAG AA × Fail

Large Text (above 18pt) WCAG AAA × Fail

Any Text WCAG AAA × Fail

Black Background



Color Contrast Check

Large Text (above 18pt) WCAG AA ✓ Pass

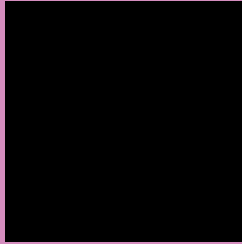
Any Text WCAG AA ✓ Pass

Large Text (above 18pt) WCAG AAA ✓ Pass

Any Text WCAG AAA ✓ Pass

If you want to check with other color combinations, try the [Color Contrast Checker](#).

Hex D48DBE Background



This preview shows how black text looks on a background with the Hex color D48DBE.

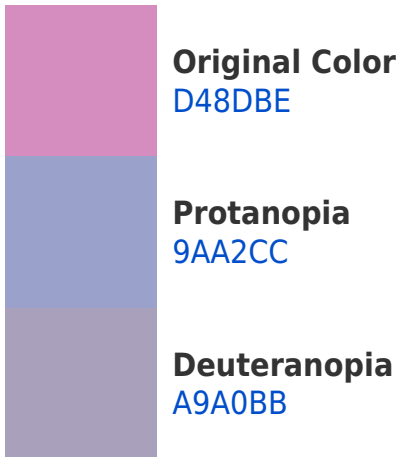



This preview shows how white text looks on a background with the Hex color D48DBE.

Color Blindness Simulation

Color vision deficiency is a very complex topic, and I could not describe the different causes any better than Wikipedia does, so if you want to learn more, you should check out their [article about color blindness](#).

Dichromacy





Tritanopia
D0939E

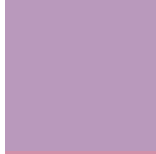
Trichromacy



Original Color
D48DBE



Protanomaly
AF9AC7



Deuteranomaly
B999BC

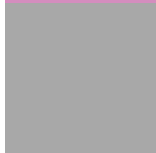


Tritanomaly
D191AA

Monochromacy



Original Color
D48DBE



Achromatopsia
A8A8A8



Achromatomaly
B89EB0

CSS Examples

Text

The CSS property to change the color of the text to Hex D48DBE is called "color". The color property can be set on classes, ids or directly on the HTML element.

This example shows how text in the color #D48DBE looks like.

```
.text, #text, p{  
    color:#D48DBE  
}
```

If you want to add a text shadow in that color use the text-shadow property, you can generate a text shadow directly with our [CSS Text Shadow Generator](#).

Here you see how black text with a 4 pixel #D48DBE colored shadow looks like.

```
.shadow{ text-shadow: 4px 4px 2px #D48DBE
}
```

Border

The CSS property to change the border of an element to Hex D48DBE is called "border". The border property can be set on classes, ids or directly on the HTML element.

This example shows the color as border, it can be applied via the CSS property "border" or "border-color".

```
.border, #border, table{ border:4px solid
#D48DBE }
```

If only the border color should be changed use the property `border-color`.

```
.border{ border-color:#D48DBE }
```

If you want to add a box shadow in that color use:

Here you see how a box with a 4 pixel #D48DBE colored shadow looks like.

```
.boxshadow{ -moz-box-shadow:4px 4px 4px  
4px #D48DBE; -webkit-box-shadow:4px 4px  
4px 4px #D48DBE; box-shadow:4px 4px 4px  
4px #D48DBE }
```

Background

The CSS property to change the background color of an element to Hex D48DBE is called "background". The background property can be set on classes, ids or directly on the HTML element.

```
.background, #background, body{  
background:#D48DBE }
```

If only the background color should be changed can be used:

```
.background{ background-color:#D48DBE }
```

This example shows the color as background, it is applied via the CSS property "background".

To optimize and compress your CSS code, you can use our [online CSS compressor and optimizer](#) based on csstidy. If you want to create a linear or radial gradient as background or border, check our [CSS Gradient Generator](#).

Hey! You found this booklet interesting? Support Converting Colors with the new Membership Option!

The pro membership hides all ads, plus gives you double the colors in the color bucket, and more awesome pro features!

[Learn more, Memberships starting at \\$2.50/m!](#)

**Follow me
on Twitter!**

@ConvertingColor