

Converting Colors

Hex(D49191)

Have a look what the booklet for
Hex(D49191) contains.

Hex(D49191)	3
<i>Conversions</i>	4
<i>Details</i>	6
<i>Harmonies</i>	11
<i>Previews</i>	23
<i>Color Blindness Simulation</i>	26
<i>CSS Examples</i>	29

Color

Hex(D49191)

Conversions

Conversions Part 1

Format	Color
Hex	D49191
RGB	212, 145, 145
RGB Percent	83%, 57%, 57%
CMY	0.1686, 0.4314, 0.4314
CMYK	0.00, 0.32, 0.32, 0.17
HSL	0°, 44%, 70%
HSV	0°, 32%, 83%
XYZ	42.3876, 36.2922, 31.5591
YIQ	165.0330, 39.9320, 14.2040

Conversions

Conversions Part 2

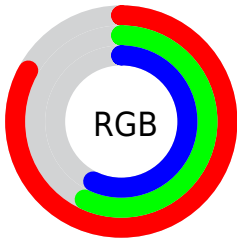
Format	Color
R _Y B	212, 145, 145
Decimal	13930897
CIE Lab	66.74, 25.36, 10.30
CIE LCh	67, 27.370, 22.109
Yxy	36.2922, 0.3845, 0.3292
Android (android.graphics.Color)	4292120977 (0xFFD49191)
YUV	165.0330, -9.8763, 41.1901
Hunter-Lab	60.2430, 20.1693, 11.1102

Details

The Hex color **D49191** is a light color, and the websafe version is hex **CC9999**. A complement of this color would be **91D4D4**, and the grayscale version is **A5A5A5**.

A 20% lighter version of the original color is **FFC7C7**, and **9C5E5F** is the 20% darker color. If you saturate the color by 10%, you get **D47C7C**, and if you desaturate by 10%, it is **D4A6A6**.

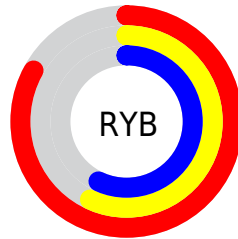
Distribution



Red (83%)

Green (57%)

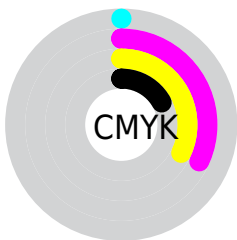
Blue (57%)



Red (83%)

Yellow (57%)

Blue (57%)

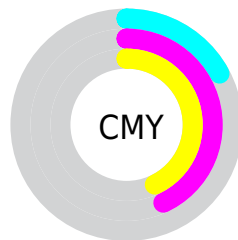


Cyan (0%)

Magenta (32%)

Yellow (32%)

Black (17%)



Cyan (17%)

Magenta (43%)

Yellow (43%)

Brightness & Saturation Gradients

These gradients show how the Hex color D49191 changes by changing the brightness by 10 percent. The first figure shows a shift by +10% for each color and the second figure -10%.

Similar to the brightness gradients but the following saturation gradients show a change of the Hex color D49191 by changing the saturation by 10% instead.

 D49191

 D49191

FFFFFF

 B87777

 FFC7C7

 9C5E5F

 FFE4E3

 804647

 662E31

 4C171C

 340101

 180001

 000000

 D49191

 D49191

 D47C7C

 D4A6A6

 D46767

 D4BBBB

 D45151

 D4D1D1

 D43C3C

 D4E6E6

 D42727

 D4FBFB

 D41212

 D4FFFF

 D40000

Harmonies

Analogous

The Analogous color harmony consists of three colors that are next to each other on the color wheel.



CF91AA



D49191



CC967C

Triad

The Triadic color harmony groups three colors that are evenly spaced from another and form a triangle on the color wheel.



D49191



85AC83



7AA7D3

Complementary

The Complementary color scheme is a pair of colors which are on the opposite of each other on the color wheel.



D49191



91D4D4

Split Complementary

Split-complementary colors differ from the complementary color scheme. The scheme consists of three colors, the original color and two neighbors of the complement color.



5DADC8



D49191



69B09B

Square

The Square scheme is like the rectangle color scheme, but the four colors are evenly spaced on the color wheel.



D49191



A1A674



57B0B4



9D9ED0

Rectangle

The Rectangle color scheme consists of four colors that form a rectangle on the color wheel.



D49191



C19C74



57B0B4



6EA9D1

Sweetspot

The Sweet Spot groups the original color and five complimentary colors.



D49191



FFE8E8



D491D4



807171



000000



808080

Same Dimension

The Same Dimension uses a secret algorithm to generate beautiful new colors.



D49191



FF9E9E



D4B391



6B6060



AB0000



2B0000

Inverse Universe

The Inverse Universe completely reimagines the original color for something new.



91D4D4



9EFFFF



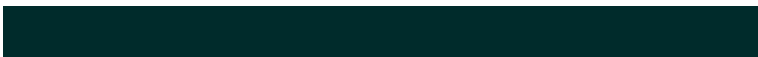
91B3D4



606B6B



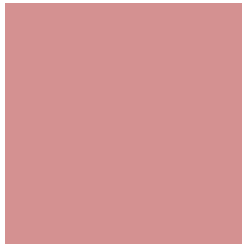
00ABAB



002B2B

Previews

White Background



This preview shows how the Hex color D49191 looks on a white background.

Color Contrast Check

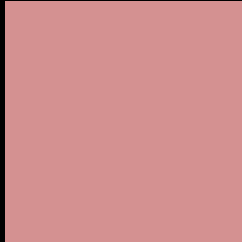
Large Text (above 18pt) WCAG AA × Fail

Any Text WCAG AA × Fail

Large Text (above 18pt) WCAG AAA × Fail

Any Text WCAG AAA × Fail

Black Background



This preview shows how the Hex color D49191 looks on a black background.

Color Contrast Check

Large Text (above 18pt) WCAG AA ✓ Pass

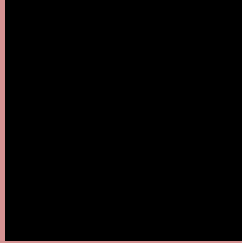
Any Text WCAG AA ✓ Pass

Large Text (above 18pt) WCAG AAA ✓ Pass

Any Text WCAG AAA ✓ Pass

If you want to check with other color combinations, try the [Color Contrast Checker](#).

Hex D49191 Background



This preview shows how black text looks on a background with the Hex color D49191.

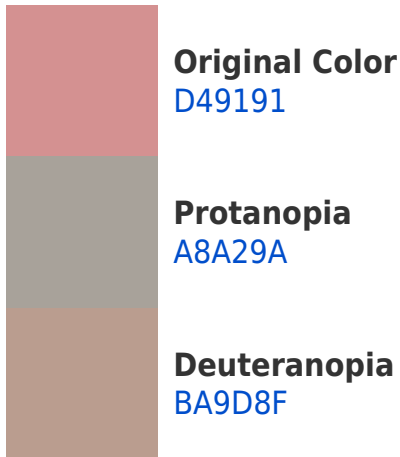


This preview shows how white text looks on a background with the Hex color D49191.

Color Blindness Simulation

Color vision deficiency is a very complex topic, and I could not describe the different causes any better than Wikipedia does, so if you want to learn more, you should check out their [article about color blindness](#).

Dichromacy





Tritanopia
D5909A

Trichromacy



Original Color
D49191

Protanomaly
B89C97

Deuteranomaly
C39990

Tritanomaly
D59097

Monochromacy



Original Color
D49191

Achromatopsia
A5A5A5

Achromatomaly
B69E9E

CSS Examples

Text

The CSS property to change the color of the text to Hex D49191 is called "color". The color property can be set on classes, ids or directly on the HTML element.

This example shows how text in the color #D49191 looks like.

```
.text, #text, p{  
    color:#D49191  
}
```

If you want to add a text shadow in that color use the text-shadow property, you can generate a text shadow directly with our [CSS Text Shadow Generator](#).

Here you see how black text with a 4 pixel #D49191 colored shadow looks like.

```
.shadow{ text-shadow: 4px 4px 2px #D49191
}
```

Border

The CSS property to change the border of an element to Hex D49191 is called "border". The border property can be set on classes, ids or directly on the HTML element.

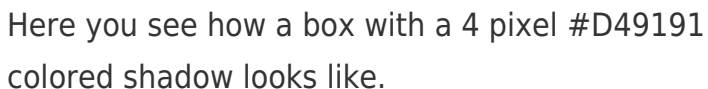
This example shows the color as border, it can be applied via the CSS property "border" or "border-color".

```
.border, #border, table{ border:4px solid
#D49191 }
```

If only the border color should be changed use the property `border-color`.

```
.border{ border-color:#D49191 }
```

If you want to add a box shadow in that color use:

A rectangular box with a 4px red shadow. The box is white with a thin red border. The shadow is a solid red color, 4 pixels wide and 4 pixels high, extending from the bottom and right sides of the box.

Here you see how a box with a 4 pixel #D49191 colored shadow looks like.

```
.boxshadow{ -moz-box-shadow:4px 4px 4px  
4px #D49191; -webkit-box-shadow:4px 4px  
4px 4px #D49191; box-shadow:4px 4px 4px  
4px #D49191 }
```

Background

The CSS property to change the background color of an element to Hex D49191 is called "background". The background property can be set on classes, ids or directly on the HTML element.

```
.background, #background, body{  
background:#D49191 }
```

If only the background color should be changed can be used:

```
.background{ background-color:#D49191 }
```

This example shows the color as background, it is applied via the CSS property "background".

To optimize and compress your CSS code, you can use our [online CSS compressor and optimizer](#) based on csstidy. If you want to create a linear or radial gradient as background or border, check our [CSS Gradient Generator](#).

Hey! You found this booklet interesting? Support Converting Colors with the new Membership Option!

The pro membership hides all ads, plus gives you double the colors in the color bucket, and more awesome pro features!

[Learn more, Memberships starting at \\$2.50/m!](#)

**Follow me
on Twitter!**

@ConvertingColor