

Converting Colors

Hex(D492A3)

Have a look what the booklet for
Hex(D492A3) contains.

Hex(D492A3)	3
<i>Conversions</i>	4
<i>Details</i>	6
<i>Harmonies</i>	11
<i>Previews</i>	23
<i>Color Blindness Simulation</i>	26
<i>CSS Examples</i>	29

Color

Hex(D492A3)

Conversions

Conversions Part 1

Format	Color
Hex	D492A3
RGB	212, 146, 163
RGB Percent	83%, 57%, 64%
CMY	0.1686, 0.4275, 0.3608
CMYK	0.00, 0.31, 0.23, 0.17
HSL	345°, 43%, 70%
HSV	345°, 31%, 83%
XYZ	44.0411, 37.1992, 39.5093
YIQ	167.6720, 33.8790, 19.2790

Conversions

Conversions Part 2

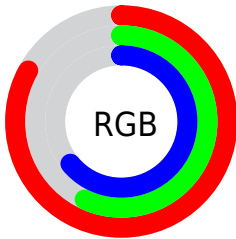
Format	Color
R _Y B	212, 146, 163
Decimal	13931171
CIE Lab	67.43, 27.31, 1.19
CIE LCh	67, 27.340, 2.488
Yxy	37.1992, 0.3647, 0.3081
Android (android.graphics.Color)	4292121251 (0xFFD492A3)
YUV	167.6720, -2.3033, 38.8757
Hunter-Lab	60.9911, 22.1588, 4.2865

Details

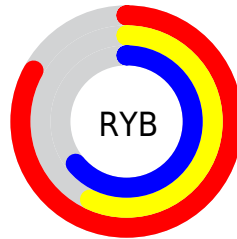
The Hex color **D492A3** is a light color, and the websafe version is hex **CC9999**. A complement of this color would be **92D4C3**, and the grayscale version is **A8A8A8**.

A 20% lighter version of the original color is **FFC8DA**, and **9C5F6F** is the 20% darker color. If you saturate the color by 10%, you get **D47D93**, and if you desaturate by 10%, it is **D4A7B3**.

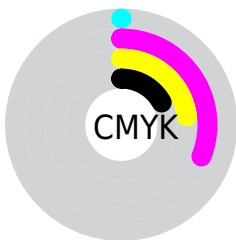
Distribution



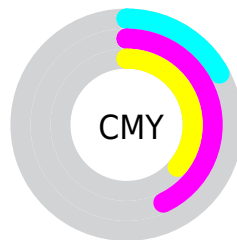
- Red (83%)
- Green (57%)
- Blue (64%)



- Red (83%)
- Yellow (57%)
- Blue (64%)



- Cyan (0%)
- Magenta (31%)
- Yellow (23%)
- Black (17%)



- Cyan (17%)
- Magenta (43%)
- Yellow (36%)

Brightness & Saturation Gradients

These gradients show how the Hex color D492A3 changes by changing the brightness by 10 percent. The first figure shows a shift by +10% for each color and the second figure -10%.

Similar to the brightness gradients but the following saturation gradients show a change of the Hex color D492A3 by changing the saturation by 10% instead.

 D492A3

 D492A3

FFFFFF

 B87889

 FFC8DA

 9C5F6F

 FFE5F6

 814657

 672F40

 4D172A

 350116

 1E0001

 000000

 D492A3

 D492A3

 D47D93

 D4A7B3

 D46884

 D4BCC2

 D45274

 D4D2D2

 D43D64

 D4E7E2

 D42854

 D4FCF2

 D41345

 D4FFFF

 D40037

Harmonies

Analogous

The Analogous color harmony consists of three colors that are next to each other on the color wheel.



C696BB



D492A3



D5948B

Triad

The Triadic color harmony groups three colors that are evenly spaced from another and form a triangle on the color wheel.



D492A3



99AB7A



67ADCF

Complementary

The Complementary color scheme is a pair of colors which are on the opposite of each other on the color wheel.



D492A3



92D4C3

Split Complementary

Split-complementary colors differ from the complementary color scheme. The scheme consists of three colors, the original color and two neighbors of the complement color.



58B1BE



D492A3



7DB08D

Square

The Square scheme is like the rectangle color scheme, but the four colors are evenly spaced on the color wheel.



D492A3



B4A373



63B2A5



88A6D5

Rectangle

The Rectangle color scheme consists of four colors that form a rectangle on the color wheel.



D492A3



CE987E



63B2A5



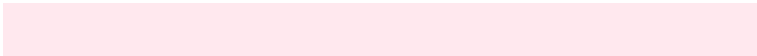
5FAFCA

Sweetspot

The Sweet Spot groups the original color and five complimentary colors.



D492A3



FFE8EE



C292D4



807175



000000



808080

Same Dimension

The Same Dimension uses a secret algorithm to generate beautiful new colors.



D492A3



FFA1B9



D4A192



6B6063



AB002C



2B000B

Inverse Universe

The Inverse Universe completely reimagines the original color for something new.



D492A3



FFA1B9



92C5D4



6B6063



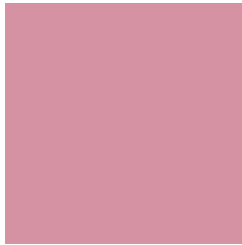
AB002C



2B000B

Previews

White Background



This preview shows how the Hex color D492A3 looks on a white background.

Color Contrast Check

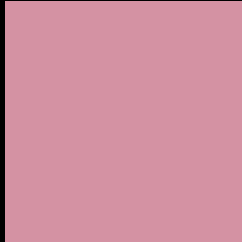
Large Text (above 18pt) WCAG AA × Fail

Any Text WCAG AA × Fail

Large Text (above 18pt) WCAG AAA × Fail

Any Text WCAG AAA × Fail

Black Background



This preview shows how the Hex color D492A3 looks on a black background.

Color Contrast Check

Large Text (above 18pt) WCAG AA ✓ Pass

Any Text WCAG AA ✓ Pass

Large Text (above 18pt) WCAG AAA ✓ Pass

Any Text WCAG AAA ✓ Pass

If you want to check with other color combinations, try the [Color Contrast Checker](#).

Hex D492A3 Background



This preview shows how black text looks on a background with the Hex color D492A3.



This preview shows how white text looks on a background with the Hex color D492A3.

Color Blindness Simulation

Color vision deficiency is a very complex topic, and I could not describe the different causes any better than Wikipedia does, so if you want to learn more, you should check out their [article about color blindness](#).


Dichromacy



Original Color
D492A3

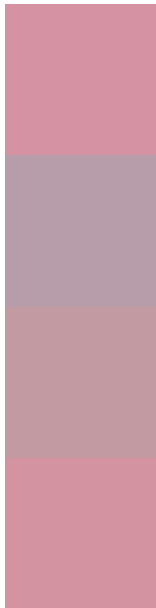
Protanopia
A5A4AD

Deuteranopia
B69FA1



Tritanopia
D3939E

Trichromacy



Original Color
D492A3

Protanomaly
B69DA9

Deuteranomaly
C19AA2

Tritanomaly
D393A0

Monochromacy



Original Color
D492A3

Achromatopsia
A8A8A8

Achromatomaly
B8A0A6

CSS Examples

Text

The CSS property to change the color of the text to Hex D492A3 is called "color". The color property can be set on classes, ids or directly on the HTML element.

This example shows how text in the color #D492A3 looks like.

```
.text, #text, p{  
    color:#D492A3  
}
```

If you want to add a text shadow in that color use the text-shadow property, you can generate a text shadow directly with our [CSS Text Shadow Generator](#).

Here you see how black text with a 4 pixel #D492A3 colored shadow looks like.

```
.shadow{ text-shadow: 4px 4px 2px #D492A3
}
```

Border

The CSS property to change the border of an element to Hex D492A3 is called "border". The border property can be set on classes, ids or directly on the HTML element.

This example shows the color as border, it can be applied via the CSS property "border" or "border-color".

```
.border, #border, table{ border:4px solid
#D492A3 }
```

If only the border color should be changed use the property `border-color`.

```
.border{ border-color:#D492A3 }
```

If you want to add a box shadow in that color use:

Here you see how a box with a 4 pixel #D492A3 colored shadow looks like.

```
.boxshadow{ -moz-box-shadow:4px 4px 4px  
4px #D492A3; -webkit-box-shadow:4px 4px  
4px 4px #D492A3; box-shadow:4px 4px 4px  
4px #D492A3 }
```

Background

The CSS property to change the background color of an element to Hex D492A3 is called "background". The background property can be set on classes, ids or directly on the HTML element.

```
.background, #background, body{  
background:#D492A3 }
```

If only the background color should be changed can be used:

```
.background{ background-color:#D492A3 }
```

This example shows the color as background, it is applied via the CSS property "background".

To optimize and compress your CSS code, you can use our [online CSS compressor and optimizer](#) based on csstidy. If you want to create a linear or radial gradient as background or border, check our [CSS Gradient Generator](#).

Hey! You found this booklet interesting? Support Converting Colors with the new Membership Option!

The pro membership hides all ads, plus gives you double the colors in the color bucket, and more awesome pro features!

[Learn more, Memberships starting at \\$2.50/m!](#)

**Follow me
on Twitter!**

@ConvertingColor