

Converting Colors

Hex(D49E90)

Have a look what the booklet for
Hex(D49E90) contains.

Hex(D49E90)	3
<i>Conversions</i>	4
<i>Details</i>	6
<i>Harmonies</i>	11
<i>Previews</i>	23
<i>Color Blindness Simulation</i>	26
<i>CSS Examples</i>	29

Color

Hex(D49E90)

Conversions

Conversions Part 1

Format	Color
Hex	D49E90
RGB	212, 158, 144
RGB Percent	83%, 62%, 56%
CMY	0.1686, 0.3804, 0.4353
CMYK	0.00, 0.25, 0.32, 0.17
HSL	12°, 44%, 70%
HSV	12°, 32%, 83%
XYZ	44.4123, 40.4644, 31.8552
YIQ	172.5500, 36.6780, 7.0940

Conversions

Conversions Part 2

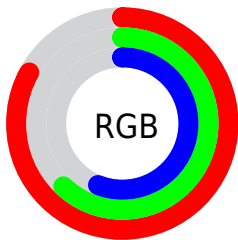
Format	Color
R _Y B	212, 162, 144
Decimal	13934224
CIE Lab	69.80, 18.17, 15.16
CIE LCh	70, 23.663, 39.836
Yxy	40.4644, 0.3805, 0.3466
Android (android.graphics.Color)	4292124304 (0xFFD49E90)
YUV	172.5500, -14.0751, 34.5977
Hunter-Lab	63.6116, 13.3046, 14.8371

Details

The Hex color **D49E90** is a light color, and the websafe version is hex **CC9999**. A complement of this color would be **90C6D4**, and the grayscale version is **ADADAD**.

A 20% lighter version of the original color is **FFD5C6**, and **9C6A5E** is the 20% darker color. If you saturate the color by 10%, you get **D48D7B**, and if you desaturate by 10%, it is **D4AFA5**.

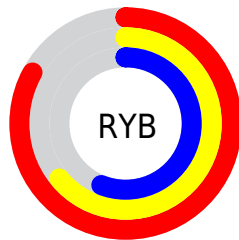
Distribution



Red (83%)

Green (62%)

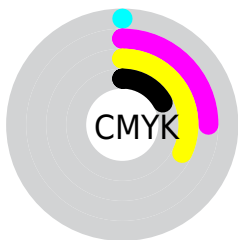
Blue (56%)



Red (83%)

Yellow (64%)

Blue (56%)

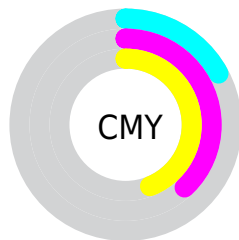


Cyan (0%)

Magenta (25%)

Yellow (32%)

Black (17%)



Cyan (17%)

Magenta (38%)

Yellow (44%)

Brightness & Saturation Gradients

These gradients show how the Hex color D49E90 changes by changing the brightness by 10 percent. The first figure shows a shift by +10% for each color and the second figure -10%.

Similar to the brightness gradients but the following saturation gradients show a change of the Hex color D49E90 by changing the saturation by 10% instead.

 D49E90

 D49E90

FFFFFF

 B88476

 FFD5C6

 9C6A5E

 FFF1E2

 815246

FFFFFFE

 673B30

 4D241B

 350F00

 1F0001

 000000

 D49E90

 D49E90

 D48D7B

 D4AFA5

 D47C66

 D4C0BA

 D46B50

 D4D1D0

 D45B3B

 D4E1E5

 D44A26

 D4F2FA

 D43911

 D4FFFF

 D42C00

Harmonies

Analogous

The Analogous color harmony consists of three colors that are next to each other on the color wheel.



D69BA4



D49E90



C7A483

Triad

The Triadic color harmony groups three colors that are evenly spaced from another and form a triangle on the color wheel.



D49E90



83B69B



9AAAD5

Complementary

The Complementary color scheme is a pair of colors which are on the opposite of each other on the color wheel.



D49E90



90C6D4

Split Complementary

Split-complementary colors differ from the complementary color scheme. The scheme consists of three colors, the original color and two neighbors of the complement color.



7EB1D2



D49E90



71B7B1

Square

The Square scheme is like the rectangle color scheme, but the four colors are evenly spaced on the color wheel.



D49E90



9BB289



6EB5C5



B7A3CC

Rectangle

The Rectangle color scheme consists of four colors that form a rectangle on the color wheel.



D49E90



BBA980



6EB5C5



90ACD5

Sweetspot

The Sweet Spot groups the original color and five complimentary colors.



D49E90



FFEBE6



D490C6



807370



000000



808080

Same Dimension

The Same Dimension uses a secret algorithm to generate beautiful new colors.



D49E90



FFB29E



D4C090



6B6360



AB2300



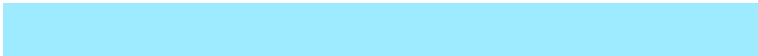
2B0900

Inverse Universe

The Inverse Universe completely reimagines the original color for something new.



90C6D4



9EEBFF



90A4D4



60696B



0088AB



00222B

Previews

White Background



This preview shows how the Hex color D49E90 looks on a white background.

Color Contrast Check

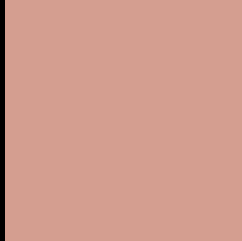
Large Text (above 18pt) WCAG AA × Fail

Any Text WCAG AA × Fail

Large Text (above 18pt) WCAG AAA × Fail

Any Text WCAG AAA × Fail

Black Background



This preview shows how the Hex color D49E90 looks on a black background.

Color Contrast Check

Large Text (above 18pt) WCAG AA ✓ Pass

Any Text WCAG AA ✓ Pass

Large Text (above 18pt) WCAG AAA ✓ Pass

Any Text WCAG AAA ✓ Pass

If you want to check with other color combinations, try the [Color Contrast Checker](#).

Hex D49E90 Background



This preview shows how black text looks on a background with the Hex color D49E90.

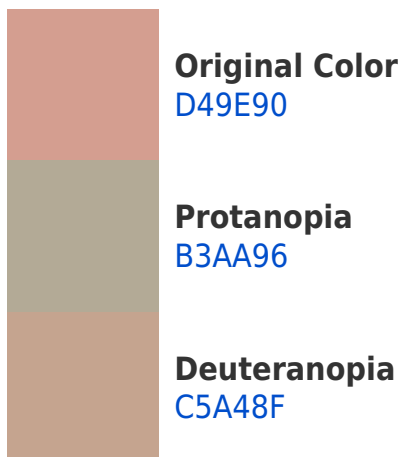


This preview shows how white text looks on a background with the Hex color D49E90.

Color Blindness Simulation

Color vision deficiency is a very complex topic, and I could not describe the different causes any better than Wikipedia does, so if you want to learn more, you should check out their [article about color blindness](#).

Dichromacy





Tritanopia
D69BA7

Trichromacy



Original Color
D49E90

Protanomaly
BFA694

Deuteranomaly
CAA28F

Tritanomaly
D59C9F

Monochromacy



Original Color
D49E90

Achromatopsia
ADADAD

Achromatomaly
BBA8A2

CSS Examples

Text

The CSS property to change the color of the text to Hex D49E90 is called "color". The color property can be set on classes, ids or directly on the HTML element.

This example shows how text in the color #D49E90 looks like.

```
.text, #text, p{  
    color:#D49E90  
}
```

If you want to add a text shadow in that color use the text-shadow property, you can generate a text shadow directly with our [CSS Text Shadow Generator](#).

Here you see how black text with a 4 pixel #D49E90 colored shadow looks like.

```
.shadow{ text-shadow: 4px 4px 2px #D49E90
}
```

Border

The CSS property to change the border of an element to Hex D49E90 is called "border". The border property can be set on classes, ids or directly on the HTML element.

This example shows the color as border, it can be applied via the CSS property "border" or "border-color".

```
.border, #border, table{ border:4px solid
#D49E90 }
```

If only the border color should be changed use the property `border-color`.

```
.border{ border-color:#D49E90 }
```

If you want to add a box shadow in that color use:

Here you see how a box with a 4 pixel #D49E90 colored shadow looks like.

```
.boxshadow{ -moz-box-shadow:4px 4px 4px  
4px #D49E90; -webkit-box-shadow:4px 4px  
4px 4px #D49E90; box-shadow:4px 4px 4px  
4px #D49E90 }
```

Background

The CSS property to change the background color of an element to Hex D49E90 is called "background". The background property can be set on classes, ids or directly on the HTML element.

```
.background, #background, body{  
background:#D49E90 }
```

If only the background color should be changed can be used:

```
.background{ background-color:#D49E90 }
```

This example shows the color as background, it is applied via the CSS property "background".

To optimize and compress your CSS code, you can use our [online CSS compressor and optimizer](#) based on csstidy. If you want to create a linear or radial gradient as background or border, check our [CSS Gradient Generator](#).

Hey! You found this booklet interesting? Support Converting Colors with the new Membership Option!

The pro membership hides all ads, plus gives you double the colors in the color bucket, and more awesome pro features!

[Learn more, Memberships starting at \\$2.50/m!](#)

**Follow me
on Twitter!**

@ConvertingColor