

Converting Colors

Hex(D4A589)

Have a look what the booklet for
Hex(D4A589) contains.

Hex(D4A589)	3
<i>Conversions</i>	4
<i>Details</i>	6
<i>Harmonies</i>	11
<i>Previews</i>	23
<i>Color Blindness Simulation</i>	26
<i>CSS Examples</i>	29

Color

Hex(D4A589)

Conversions

Conversions Part 1

Format	Color
Hex	D4A589
RGB	212, 165, 137
RGB Percent	83%, 65%, 54%
CMY	0.1686, 0.3529, 0.4627
CMYK	0.00, 0.22, 0.35, 0.17
HSL	22°, 47%, 68%
HSV	22°, 35%, 83%
XYZ	45.1219, 42.7135, 29.5333
YIQ	175.8610, 37.0000, 1.2560

Conversions

Conversions Part 2

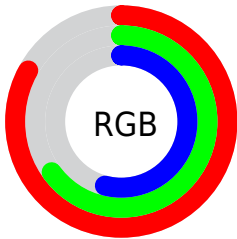
Format	Color
R _Y B	212, 182, 137
Decimal	13936009
CIE Lab	71.36, 13.50, 21.16
CIE LCh	71, 25.096, 57.464
Yxy	42.7135, 0.3844, 0.3639
Android (android.graphics.Color)	4292126089 (0xFFD4A589)
YUV	175.8610, -19.1585, 31.6939
Hunter-Lab	65.3555, 8.8653, 18.9566

Details

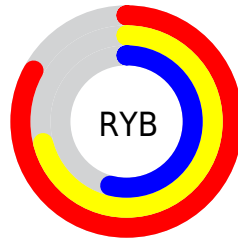
The Hex color **D4A589** is a light color, and the websafe version is hex **CC9966**. A complement of this color would be **89B8D4**, and the grayscale version is **B0B0B0**.

A 20% lighter version of the original color is **FFDCBF**, and **9C7157** is the 20% darker color. If you saturate the color by 10%, you get **D49874**, and if you desaturate by 10%, it is **D4B29E**.

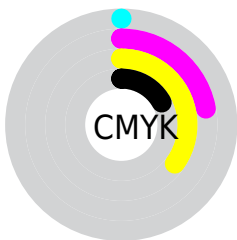
Distribution



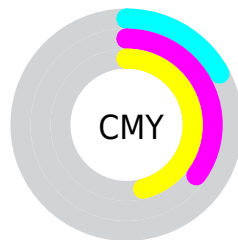
- Red (83%)
- Green (65%)
- Blue (54%)



- Red (83%)
- Yellow (71%)
- Blue (54%)



- Cyan (0%)
- Magenta (22%)
- Yellow (35%)
- Black (17%)



- Cyan (17%)
- Magenta (35%)
- Yellow (46%)

Brightness & Saturation Gradients

These gradients show how the Hex color D4A589 changes by changing the brightness by 10 percent. The first figure shows a shift by +10% for each color and the second figure -10%.

Similar to the brightness gradients but the following saturation gradients show a change of the Hex color D4A589 by changing the saturation by 10% instead.

 D4A589

 D4A589

FFFFFF

 B88B70

 FFDCBF

 9C7157

 FFF9DA

 81593F

 FFFFF7

 674129

 4D2B14

 351600

 1E0000

 000000

 D4A589

 D4A589

 D49874

 D4B29E

 D48A5F

 D4C0B3

 D47D49

 D4CDC9

 D47034

 D4DADE

 D4631F

 D4E7F3

 D4550A

 D4F5FF

 D44F00

 D4FFFF

Harmonies

Analogous

The Analogous color harmony consists of three colors that are next to each other on the color wheel.



DD9F9B



D4A589



C2AD81

Triad

The Triadic color harmony groups three colors that are evenly spaced from another and form a triangle on the color wheel.



D4A589



78BCAC



B0AAD7

Complementary

The Complementary color scheme is a pair of colors which are on the opposite of each other on the color wheel.



D4A589



89B8D4

Split Complementary

Split-complementary colors differ from the complementary color scheme. The scheme consists of three colors, the original color and two neighbors of the complement color.



90B1DC



D4A589



6CBBC3

Square

The Square scheme is like the rectangle color scheme, but the four colors are evenly spaced on the color wheel.



D4A589



8FB996



75B8D5



CAA2C8

Rectangle

The Rectangle color scheme consists of four colors that form a rectangle on the color wheel.



D4A589



B2B283



75B8D5



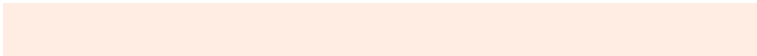
A5ACDA

Sweetspot

The Sweet Spot groups the original color and five complimentary colors.



D4A589



FFEDE3



D489B8



80756F



000000



808080

Same Dimension

The Same Dimension uses a secret algorithm to generate beautiful new colors.



D4A589



FFBC94



D4CA89



6B6460



AB4000



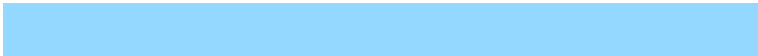
2B1000

Inverse Universe

The Inverse Universe completely reimagines the original color for something new.



89B8D4



94D7FF



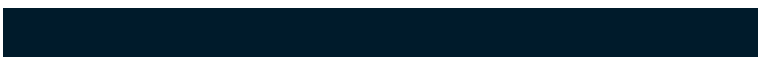
8993D4



60676B



006BAB



001B2B

Previews

White Background



This preview shows how the Hex color D4A589 looks on a white background.

Color Contrast Check

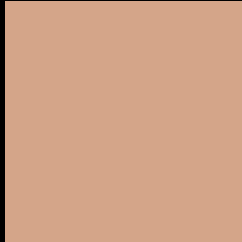
Large Text (above 18pt) WCAG AA × Fail

Any Text WCAG AA × Fail

Large Text (above 18pt) WCAG AAA × Fail

Any Text WCAG AAA × Fail

Black Background



This preview shows how the Hex color D4A589 looks on a black background.

Color Contrast Check

Large Text (above 18pt) WCAG AA ✓ Pass

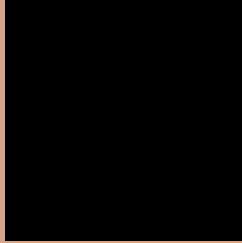
Any Text WCAG AA ✓ Pass

Large Text (above 18pt) WCAG AAA ✓ Pass

Any Text WCAG AAA ✓ Pass

If you want to check with other color combinations, try the [Color Contrast Checker](#).

Hex D4A589 Background



This preview shows how black text looks on a background with the Hex color D4A589.

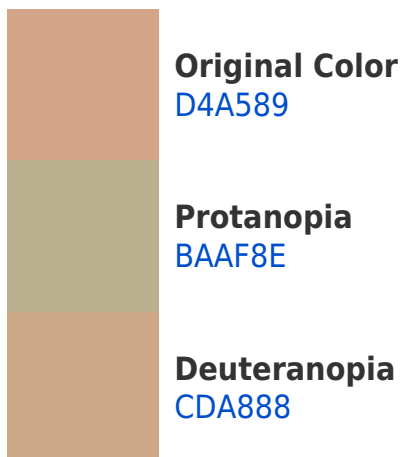


This preview shows how white text looks on a background with the Hex color D4A589.

Color Blindness Simulation

Color vision deficiency is a very complex topic, and I could not describe the different causes any better than Wikipedia does, so if you want to learn more, you should check out their [article about color blindness](#).

Dichromacy





Tritanopia
D8A0AC

Trichromacy



Original Color
D4A589

Protanomaly
C3AB8C

Deuteranomaly
D0A788

Tritanomaly
D7A29F

Monochromacy



Original Color
D4A589

Achromatopsia
B0B0B0

Achromatomaly
BDACA2

CSS Examples

Text

The CSS property to change the color of the text to Hex D4A589 is called "color". The color property can be set on classes, ids or directly on the HTML element.

This example shows how text in the color #D4A589 looks like.

```
.text, #text, p{  
    color:#D4A589  
}
```

If you want to add a text shadow in that color use the text-shadow property, you can generate a text shadow directly with our [CSS Text Shadow Generator](#).

Here you see how black text with a 4 pixel #D4A589 colored shadow looks like.

```
.shadow{ text-shadow: 4px 4px 2px #D4A589
}
```

Border

The CSS property to change the border of an element to Hex D4A589 is called "border". The border property can be set on classes, ids or directly on the HTML element.

This example shows the color as border, it can be applied via the CSS property "border" or "border-color".

```
.border, #border, table{ border:4px solid
#D4A589 }
```

If only the border color should be changed use the property `border-color`.

```
.border{ border-color:#D4A589 }
```

If you want to add a box shadow in that color use:

Here you see how a box with a 4 pixel #D4A589 colored shadow looks like.

```
.boxshadow{ -moz-box-shadow:4px 4px 4px  
4px #D4A589; -webkit-box-shadow:4px 4px  
4px 4px #D4A589; box-shadow:4px 4px 4px  
4px #D4A589 }
```

Background

The CSS property to change the background color of an element to Hex D4A589 is called "background". The background property can be set on classes, ids or directly on the HTML element.

```
.background, #background, body{  
background:#D4A589 }
```

If only the background color should be changed can be used:

```
.background{ background-color:#D4A589 }
```

This example shows the color as background, it is applied via the CSS property "background".

To optimize and compress your CSS code, you can use our [online CSS compressor and optimizer](#) based on csstidy. If you want to create a linear or radial gradient as background or border, check our [CSS Gradient Generator](#).

Hey! You found this booklet interesting? Support Converting Colors with the new Membership Option!

The pro membership hides all ads, plus gives you double the colors in the color bucket, and more awesome pro features!

[Learn more, Memberships starting at \\$2.50/m!](#)

**Follow me
on Twitter!**

@ConvertingColor