

# Converting Colors

Hex(D4A79A)

Have a look what the booklet for  
Hex(D4A79A) contains.

<b>Hex(D4A79A)</b> .....	3
<b><i>Conversions</i></b> .....	4
<b><i>Details</i></b> .....	6
<b><i>Harmonies</i></b> .....	11
<b><i>Previews</i></b> .....	23
<b><i>Color Blindness Simulation</i></b> .....	26
<b><i>CSS Examples</i></b> .....	29

# **Color**

**Hex(D4A79A)**

# Conversions

## Conversions Part 1

Format	Color
Hex	D4A79A
RGB	212, 167, 154
RGB Percent	83%, 65%, 60%
CMY	0.1686, 0.3451, 0.3961
CMYK	0.00, 0.21, 0.27, 0.17
HSL	13°, 40%, 72%
HSV	13°, 27%, 83%
XYZ	46.8028, 43.9676, 36.5917
YIQ	178.9730, 30.9930, 5.4970

# Conversions

## Conversions Part 2

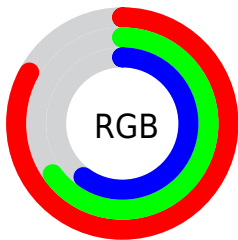
Format	Color
RYB	212, 171, 154
Decimal	13936538
CIELab	72.21, 14.63, 13.03
CIELCh	72, 19.593, 41.687
Yxy	43.9676, 0.3675, 0.3452
Android (android.graphics.Color)	4292126618 (0xFFD4A79A)
YUV	178.9730, -12.3117, 28.9647
Hunter-Lab	66.3081, 9.9532, 13.6968

# Details

The Hex color **D4A79A** is a light color, and the websafe version is hex **CC9999**. A complement of this color would be **9AC7D4**, and the grayscale version is **B3B3B3**.

A 20% lighter version of the original color is **FFDED0**, and **9C7367** is the 20% darker color. If you saturate the color by 10%, you get **D49785**, and if you desaturate by 10%, it is **D4B7AF**.

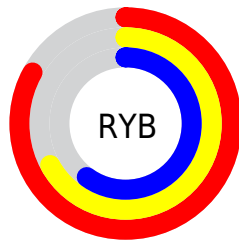
# Distribution



Red (83%)

Green (65%)

Blue (60%)



Red (83%)

Yellow (67%)

Blue (60%)

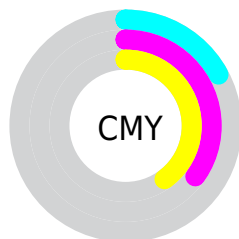


Cyan (0%)

Magenta (21%)

Yellow (27%)

Black (17%)



Cyan (17%)

Magenta (35%)

Yellow (40%)

# Brightness & Saturation Gradients

These gradients show how the Hex color D4A79A changes by changing the brightness by 10 percent. The first figure shows a shift by +10% for each color and the second figure -10%.

Similar to the brightness gradients but the following saturation gradients show a change of the Hex color D4A79A by changing the saturation by 10% instead.



 D4A79A

 D4A79A

FFFFFF

 B88D80

 FFDED0

 9C7367

 FFFBED

 825A4F

 684338

 4E2C22

 36170D

 210000

 000000

 D4A79A

 D4A79A

 D49785

 D4B7AF

 D48670

 D4C8C4

 D4765A

 D4D8DA

 D46545

 D4E9EF

 D45530

 D4F9FF

 D4441B

 D4FFFF

 D43406

 D43000

# Harmonies

## Analogous

The Analogous color harmony consists of three colors that are next to each other on the color wheel.



D6A5AB



D4A79A



C9AC90

# Triad

The Triadic color harmony groups three colors that are evenly spaced from another and form a triangle on the color wheel.



D4A79A



90BAA5



A6B0D4

# Complementary

The Complementary color scheme is a pair of colors which are on the opposite of each other on the color wheel.



D4A79A



9AC7D4

# Split Complementary

Split-complementary colors differ from the complementary color scheme. The scheme consists of three colors, the original color and two neighbors of the complement color.



8FB6D2



D4A79A



83BBB8

# Square

The Square scheme is like the rectangle color scheme, but the four colors are evenly spaced on the color wheel.



D4A79A



A3B796



82BAC8



BDAACC

# Rectangle

The Rectangle color scheme consists of four colors that form a rectangle on the color wheel.



D4A79A



BEB08D



82BAC8



9EB2D4

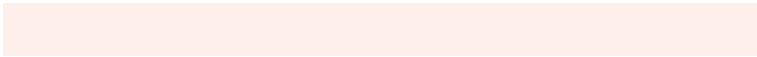


# Sweetspot

The Sweet Spot groups the original color and five complimentary colors.



D4A79A



FFEFE8



D49AC7



807673



000000



808080



# Same Dimension

The Same Dimension uses a secret algorithm to generate beautiful new colors.



D4A79A



FFBEAB



D4C49A



6B6360



AB2600



2B0A00

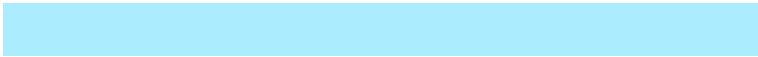


# Inverse Universe

The Inverse Universe completely reimagines the original color for something new.



9AC7D4



ABECFF



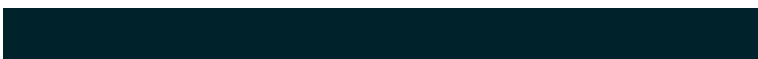
9AAAD4



60696B



0085AB



00222B



# Previews

## White Background



This preview shows how the Hex color D4A79A looks on a white background.

## Color Contrast Check

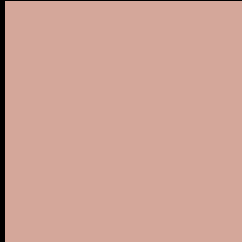
Large Text (above 18pt) WCAG AA × Fail

Any Text WCAG AA × Fail

Large Text (above 18pt) WCAG AAA × Fail

Any Text WCAG AAA × Fail

# Black Background



This preview shows how the Hex color D4A79A looks on a black background.

## Color Contrast Check

Large Text (above 18pt) WCAG AA ✓ Pass

Any Text WCAG AA ✓ Pass

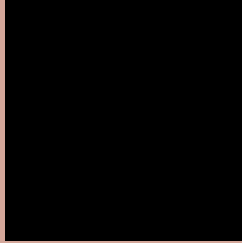
Large Text (above 18pt) WCAG AAA ✓ Pass

Any Text WCAG AAA ✓ Pass

If you want to check with other color combinations, try the [Color Contrast Checker](#).



## Hex D4A79A Background



This preview shows how black text looks on a background with the Hex color D4A79A.



This preview shows how white text looks on a background with the Hex color D4A79A.

# Color Blindness Simulation

Color vision deficiency is a very complex topic, and I could not describe the different causes any better than Wikipedia does, so if you want to learn more, you should check out their [article about color blindness](#).

## Dichromacy



**Original Color**  
D4A79A

**Protanopia**  
B9B19F

**Deuteranopia**  
CBAB99



**Tritanopia**  
D6A4B0

# Trichromacy



**Original Color**  
D4A79A

**Protanomaly**  
C3AD9D

**Deuteranomaly**  
CEAA99

**Tritanomaly**  
D5A5A8

# Monochromacy



**Original Color**  
D4A79A

**Achromatopsia**  
B3B3B3

**Achromatomaly**  
BFAFAA

# CSS Examples

## Text

The CSS property to change the color of the text to Hex D4A79A is called "color". The color property can be set on classes, ids or directly on the HTML element.

This example shows how text in the color #D4A79A looks like.

```
.text, #text, p{  
    color:#D4A79A  
}
```

If you want to add a text shadow in that color use the text-shadow property, you can generate a text shadow directly with our [CSS Text Shadow Generator](#).

Here you see how black text with a 4 pixel #D4A79A colored shadow looks like.

```
.shadow{ text-shadow: 4px 4px 2px #D4A79A
}
```

## Border

The CSS property to change the border of an element to Hex D4A79A is called "border". The border property can be set on classes, ids or directly on the HTML element.

This example shows the color as border, it can be applied via the CSS property "border" or "border-color".

```
.border, #border, table{ border:4px solid
#D4A79A }
```

If only the border color should be changed use the property `border-color`.

```
.border{ border-color:#D4A79A }
```

If you want to add a box shadow in that color use:

Here you see how a box with a 4 pixel #D4A79A colored shadow looks like.

```
.boxshadow{ -moz-box-shadow:4px 4px 4px  
4px #D4A79A; -webkit-box-shadow:4px 4px  
4px 4px #D4A79A; box-shadow:4px 4px 4px  
4px #D4A79A }
```

# Background

The CSS property to change the background color of an element to Hex D4A79A is called "background". The background property can be set on classes, ids or directly on the HTML element.

```
.background, #background, body{  
background:#D4A79A }
```

If only the background color should be changed can be used:

```
.background{ background-color:#D4A79A }
```

This example shows the color as background, it is applied via the CSS property "background".

To optimize and compress your CSS code, you can use our [online CSS compressor and optimizer](#) based on csstidy. If you want to create a linear or radial gradient as background or border, check our [CSS Gradient Generator](#).



Hey! You found this booklet interesting? Support Converting Colors with the new Membership Option!

The pro membership hides all ads, plus gives you double the colors in the color bucket, and more awesome pro features!

**[Learn more, Memberships starting at \\$2.50/m!](#)**

**Follow me  
on Twitter!**

@ConvertingColor