

Converting Colors

Hex(D4AAA7)

Have a look what the booklet for
Hex(D4AAA7) contains.

Hex(D4AAA7)	3
<i>Conversions</i>	4
<i>Details</i>	6
<i>Harmonies</i>	11
<i>Previews</i>	23
<i>Color Blindness Simulation</i>	26
<i>CSS Examples</i>	29

Color

Hex(D4AAA7)

Conversions

Conversions Part 1

Format	Color
Hex	D4AAA7
RGB	212, 170, 167
RGB Percent	83%, 67%, 65%
CMY	0.1686, 0.3333, 0.3451
CMYK	0.00, 0.20, 0.21, 0.17
HSL	4°, 34%, 74%
HSV	4°, 21%, 83%
XYZ	48.5012, 45.5365, 42.7924
YIQ	182.2160, 25.9950, 7.9710

Conversions

Conversions Part 2

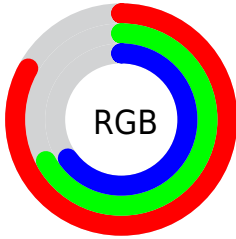
Format	Color
R_{YB}	212, 170, 167
Decimal	13937319
CIE Lab	73.24, 14.88, 7.37
CIE LCh	73, 16.607, 26.348
Yxy	45.5365, 0.3545, 0.3328
Android (android.graphics.Color)	4292127399 (0xFFD4AAA7)
YUV	182.2160, -7.5015, 26.1206
Hunter-Lab	67.4808, 10.2039, 9.6383

Details

The Hex color **D4AAA7** is a light color, and the websafe version is hex **CC9999**. A complement of this color would be **A7D1D4**, and the grayscale version is **B6B6B6**.

A 20% lighter version of the original color is **FFE1DE**, and **9D7673** is the 20% darker color. If you saturate the color by 10%, you get **D49692**, and if you desaturate by 10%, it is **D4BEBC**.

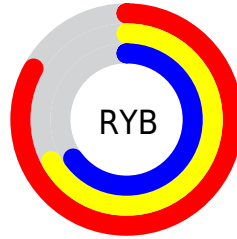
Distribution



Red (83%)

Green (67%)

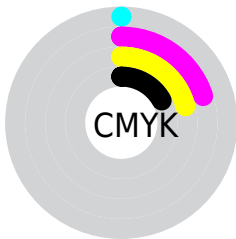
Blue (65%)



Red (83%)

Yellow (67%)

Blue (65%)

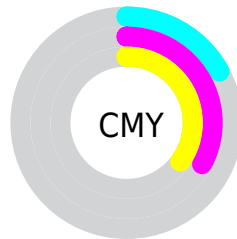


Cyan (0%)

Magenta (20%)

Yellow (21%)

Black (17%)



Cyan (17%)

Magenta (33%)

Yellow (35%)

Brightness & Saturation Gradients

These gradients show how the Hex color D4AAA7 changes by changing the brightness by 10 percent. The first figure shows a shift by +10% for each color and the second figure -10%.

Similar to the brightness gradients but the following saturation gradients show a change of the Hex color D4AAA7 by changing the saturation by 10% instead.



D4AAA7



D4AAA7

FFFFFF



B88F8D



FFE1DE



9D7673



FFFEFB



825D5B



684543



4F2F2D



381918



240000



000000



D4AAA7



D4AAA7

 D49692

 D4BEBC

 D4827D

 D4D2D1

 D46F67

 D4E5E7

 D45B52

 D4F9FC

 D4473D

 D4FFFF

 D43328

 D41F13

 D40E00

Harmonies

Analogous

The Analogous color harmony consists of three colors that are next to each other on the color wheel.



D1A9B6



D4AAA7



CEAD9B

Triad

The Triadic color harmony groups three colors that are evenly spaced from another and form a triangle on the color wheel.



D4AAA7



A0BBA3



A1B6D2

Complementary

The Complementary color scheme is a pair of colors which are on the opposite of each other on the color wheel.



D4AAA7



A7D1D4

Split Complementary

Split-complementary colors differ from the complementary color scheme. The scheme consists of three colors, the original color and two neighbors of the complement color.



91BACD



D4AAA7



92BDB1

Square

The Square scheme is like the rectangle color scheme, but the four colors are evenly spaced on the color wheel.



D4AAA7



B1B798



8CBCC1



B4B1CF

Rectangle

The Rectangle color scheme consists of four colors that form a rectangle on the color wheel.



D4AAA7



C7B097



8CBCC1



9BB7D1

Sweetspot

The Sweet Spot groups the original color and five complimentary colors.



D4AAA7



FFF1F0



D4A7D1



807777



000000



808080

Same Dimension

The Same Dimension uses a secret algorithm to generate beautiful new colors.



D4AAA7



FFC3BF



D4C0A7



6B6160



AB0B00



2B0300

Inverse Universe

The Inverse Universe completely reimagines the original color for something new.



A7D1D4



BFFBFF



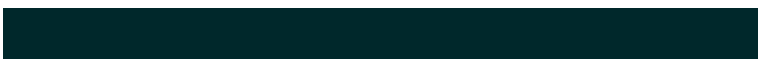
A7BBD4



606A6B



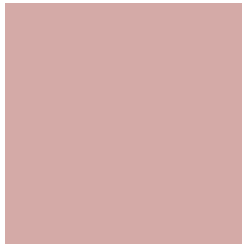
009FAB



00282B

Previews

White Background



This preview shows how the Hex color D4AAA7 looks on a white background.

Color Contrast Check

Large Text (above 18pt) WCAG AA × Fail

Any Text WCAG AA × Fail

Large Text (above 18pt) WCAG AAA × Fail

Any Text WCAG AAA × Fail

Black Background



This preview shows how the Hex color D4AAA7 looks on a black background.

Color Contrast Check

Large Text (above 18pt) WCAG AA ✓ Pass

Any Text WCAG AA ✓ Pass

Large Text (above 18pt) WCAG AAA ✓ Pass

Any Text WCAG AAA ✓ Pass

If you want to check with other color combinations, try the [Color Contrast Checker](#).

Hex D4AAA7 Background



This preview shows how black text looks on a background with the Hex color D4AAA7.

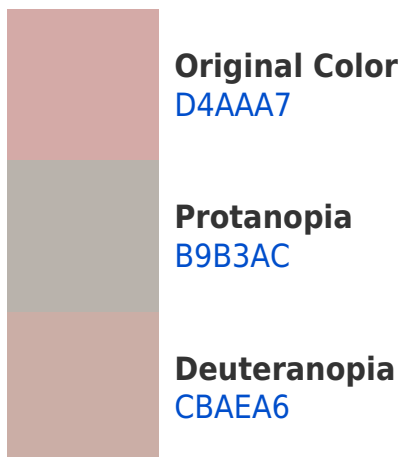


This preview shows how white text looks on a background with the Hex color D4AAA7.

Color Blindness Simulation

Color vision deficiency is a very complex topic, and I could not describe the different causes any better than Wikipedia does, so if you want to learn more, you should check out their [article about color blindness](#).

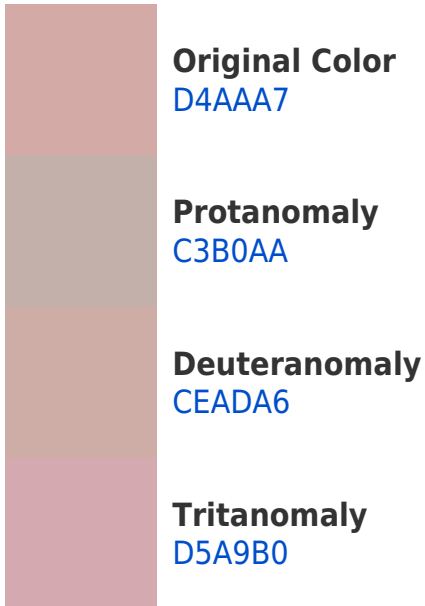
Dichromacy



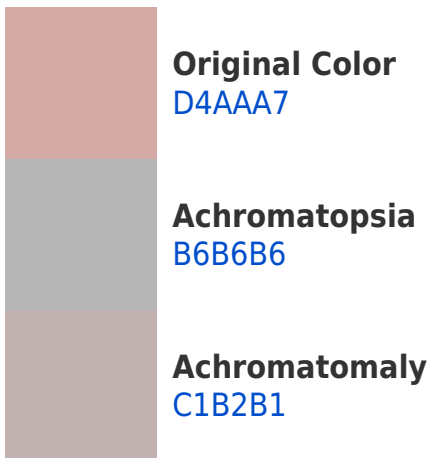


Tritanopia
D6A8B5

Trichromacy



Monochromacy



CSS Examples

Text

The CSS property to change the color of the text to Hex D4AAA7 is called "color". The color property can be set on classes, ids or directly on the HTML element.

This example shows how text in the color #D4AAA7 looks like.

```
.text, #text, p{  
  color:#D4AAA7  
}
```

If you want to add a text shadow in that color use the text-shadow property, you can generate a text shadow directly with our [CSS Text Shadow Generator](#).

Here you see how black text with a 4 pixel #D4AAA7 colored shadow looks like.

```
.shadow{ text-shadow: 4px 4px 2px #D4AAA7
}
```

Border

The CSS property to change the border of an element to Hex D4AAA7 is called "border". The border property can be set on classes, ids or directly on the HTML element.

This example shows the color as border, it can be applied via the CSS property "border" or "border-color".

```
.border, #border, table{ border:4px solid
#D4AAA7 }
```

If only the border color should be changed use the property `border-color`.

```
.border{ border-color:#D4AAA7 }
```

If you want to add a box shadow in that color use:

Here you see how a box with a 4 pixel #D4AAA7 colored shadow looks like.

```
.boxshadow{ -moz-box-shadow:4px 4px 4px  
4px #D4AAA7; -webkit-box-shadow:4px 4px  
4px 4px #D4AAA7; box-shadow:4px 4px 4px  
4px #D4AAA7 }
```

Background

The CSS property to change the background color of an element to Hex D4AAA7 is called "background". The background property can be set on classes, ids or directly on the HTML element.

```
.background, #background, body{  
background:#D4AAA7 }
```

If only the background color should be changed can be used:

```
.background{ background-color:#D4AAA7 }
```

This example shows the color as background, it is applied via the CSS property "background".

To optimize and compress your CSS code, you can use our [online CSS compressor and optimizer](#) based on csstidy. If you want to create a linear or radial gradient as background or border, check our [CSS Gradient Generator](#).

Hey! You found this booklet interesting? Support Converting Colors with the new Membership Option!

The pro membership hides all ads, plus gives you double the colors in the color bucket, and more awesome pro features!

[Learn more, Memberships starting at \\$2.50/m!](#)

**Follow me
on Twitter!**

@ConvertingColor