

Converting Colors

Hex(D4ABAB)

Have a look what the booklet for
Hex(D4ABAB) contains.

Hex(D4ABAB)	3
<i>Conversions</i>	4
<i>Details</i>	6
<i>Harmonies</i>	11
<i>Previews</i>	23
<i>Color Blindness Simulation</i>	26
<i>CSS Examples</i>	29

Color

Hex(D4ABAB)

Conversions

Conversions Part 1

Format	Color
Hex	D4ABAB
RGB	212, 171, 171
RGB Percent	83%, 67%, 67%
CMY	0.1686, 0.3294, 0.3294
CMYK	0.00, 0.19, 0.19, 0.17
HSL	0°, 32%, 75%
HSV	0°, 19%, 83%
XYZ	49.0650, 46.0631, 44.8331
YIQ	183.2590, 24.4360, 8.6920

Conversions

Conversions Part 2

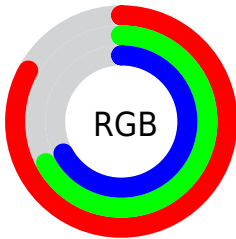
Format	Color
R _Y B	212, 171, 171
Decimal	13937579
CIE Lab	73.59, 14.95, 5.67
CIE LCh	74, 15.986, 20.769
Yxy	46.0631, 0.3506, 0.3291
Android (android.graphics.Color)	4292127659 (0xFFD4ABAB)
YUV	183.2590, -6.0437, 25.2059
Hunter-Lab	67.8698, 10.2704, 8.3434

Details

The Hex color **D4ABAB** is a light color, and the websafe version is hex **CC9999**. A complement of this color would be **ABD4D4**, and the grayscale version is **B7B7B7**.

A 20% lighter version of the original color is **FFE2E2**, and **9D7777** is the 20% darker color. If you saturate the color by 10%, you get **D49696**, and if you desaturate by 10%, it is **D4C0C0**.

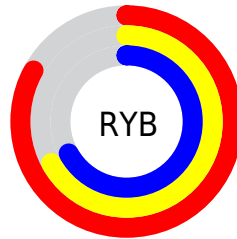
Distribution



Red (83%)

Green (67%)

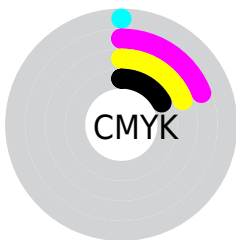
Blue (67%)



Red (83%)

Yellow (67%)

Blue (67%)

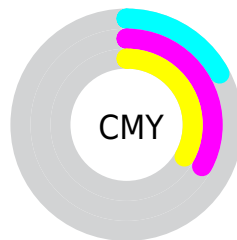


Cyan (0%)

Magenta (19%)

Yellow (19%)

Black (17%)



Cyan (17%)

Magenta (33%)

Yellow (33%)

Brightness & Saturation Gradients

These gradients show how the Hex color D4ABAB changes by changing the brightness by 10 percent. The first figure shows a shift by +10% for each color and the second figure -10%.

Similar to the brightness gradients but the following saturation gradients show a change of the Hex color D4ABAB by changing the saturation by 10% instead.

 D4ABAB

 D4ABAB

FFFFFF

 B89091

 FFE2E2

 9D7777

 825E5E

 694647

 502F30

 381A1B

 240100

 000000

 D4ABAB

 D4ABAB

 D49696

 D4C0C0

 D48181

 D4D5D5

 D46B6B

 D4EBEB

 D45656

 D4FFFF

 D44141

 D42C2C

 D41717

 D40101

 D40000

Harmonies

Analogous

The Analogous color harmony consists of three colors that are next to each other on the color wheel.



D0ABBA



D4ABAB



D0AE9F

Triad

The Triadic color harmony groups three colors that are evenly spaced from another and form a triangle on the color wheel.



D4ABAB



A5BBA2



9FB7D1

Complementary

The Complementary color scheme is a pair of colors which are on the opposite of each other on the color wheel.



D4ABAB



ABD4D4

Split Complementary

Split-complementary colors differ from the complementary color scheme. The scheme consists of three colors, the original color and two neighbors of the complement color.



92BBCB



D4ABAB



96DBD0

Square

The Square scheme is like the rectangle color scheme, but the four colors are evenly spaced on the color wheel.



D4ABAB



B5B799



8FBDBF



B2B3D0

Rectangle

The Rectangle color scheme consists of four colors that form a rectangle on the color wheel.



D4ABAB



C9B19A



8FBDBF



9AB9D0

Sweetspot

The Sweet Spot groups the original color and five complimentary colors.



D4ABAB



FFF0F0



D4ABD4



807777



000000



808080

Same Dimension

The Same Dimension uses a secret algorithm to generate beautiful new colors.



D4ABAB



FFC4C4



D4C0AB



6B6060



AB0000



2B0000

Inverse Universe

The Inverse Universe completely reimagines the original color for something new.



ABD4D4



C4FFFF



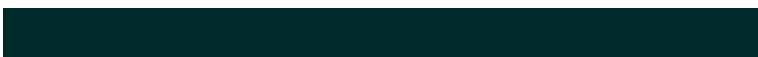
ABC0D4



606B6B



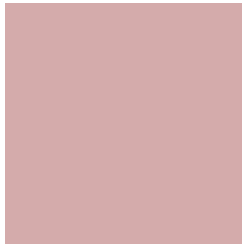
00ABAB



002B2B

Previews

White Background



This preview shows how the Hex color D4ABAB looks on a white background.

Color Contrast Check

Large Text (above 18pt) WCAG AA × Fail

Any Text WCAG AA × Fail

Large Text (above 18pt) WCAG AAA × Fail

Any Text WCAG AAA × Fail

Black Background



This preview shows how the Hex color D4ABAB looks on a black background.

Color Contrast Check

Large Text (above 18pt) WCAG AA ✓ Pass

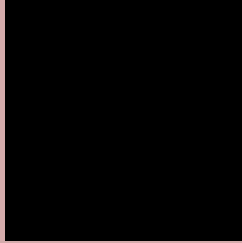
Any Text WCAG AA ✓ Pass

Large Text (above 18pt) WCAG AAA ✓ Pass

Any Text WCAG AAA ✓ Pass

If you want to check with other color combinations, try the [Color Contrast Checker](#).

Hex D4ABAB Background



This preview shows how black text looks on a background with the Hex color D4ABAB.

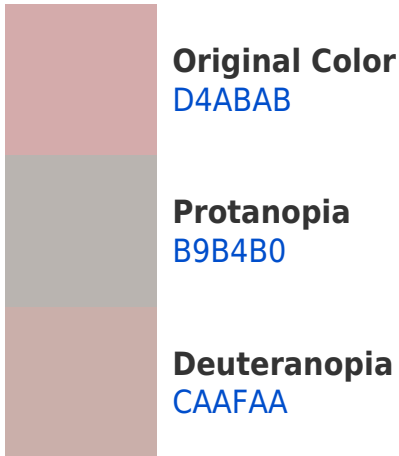


This preview shows how white text looks on a background with the Hex color D4ABAB.

Color Blindness Simulation

Color vision deficiency is a very complex topic, and I could not describe the different causes any better than Wikipedia does, so if you want to learn more, you should check out their [article about color blindness](#).

Dichromacy





Tritanopia
D5A9B6

Trichromacy



Original Color
D4ABAB

Protanomaly
C3B1AE

Deuteranomaly
CEAEAA

Tritanomaly
D5AAB2

Monochromacy



Original Color
D4ABAB

Achromatopsia
B7B7B7

Achromatomaly
C2B3B3

CSS Examples

Text

The CSS property to change the color of the text to Hex D4ABAB is called "color". The color property can be set on classes, ids or directly on the HTML element.

This example shows how text in the color #D4ABAB looks like.

```
.text, #text, p{  
    color:#D4ABAB  
}
```

If you want to add a text shadow in that color use the text-shadow property, you can generate a text shadow directly with our [CSS Text Shadow Generator](#).

Here you see how black text with a 4 pixel #D4ABAB colored shadow looks like.

```
.shadow{ text-shadow: 4px 4px 2px #D4ABAB  
}
```

Border

The CSS property to change the border of an element to Hex D4ABAB is called "border". The border property can be set on classes, ids or directly on the HTML element.

This example shows the color as border, it can be applied via the CSS property "border" or "border-color".

```
.border, #border, table{ border:4px solid  
#D4ABAB }
```

If only the border color should be changed use the property `border-color`.

```
.border{ border-color:#D4ABAB }
```

If you want to add a box shadow in that color use:

Here you see how a box with a 4 pixel #D4ABAB colored shadow looks like.

```
.boxshadow{ -moz-box-shadow:4px 4px 4px  
4px #D4ABAB; -webkit-box-shadow:4px 4px  
4px 4px #D4ABAB; box-shadow:4px 4px 4px  
4px #D4ABAB }
```

Background

The CSS property to change the background color of an element to Hex D4ABAB is called "background". The background property can be set on classes, ids or directly on the HTML element.

```
.background, #background, body{  
background:#D4ABAB }
```

If only the background color should be changed can be used:

```
.background{ background-color:#D4ABAB }
```

This example shows the color as background, it is applied via the CSS property "background".

To optimize and compress your CSS code, you can use our [online CSS compressor and optimizer](#) based on csstidy. If you want to create a linear or radial gradient as background or border, check our [CSS Gradient Generator](#).

Hey! You found this booklet interesting? Support Converting Colors with the new Membership Option!

The pro membership hides all ads, plus gives you double the colors in the color bucket, and more awesome pro features!

[Learn more, Memberships starting at \\$2.50/m!](#)

**Follow me
on Twitter!**

@ConvertingColor